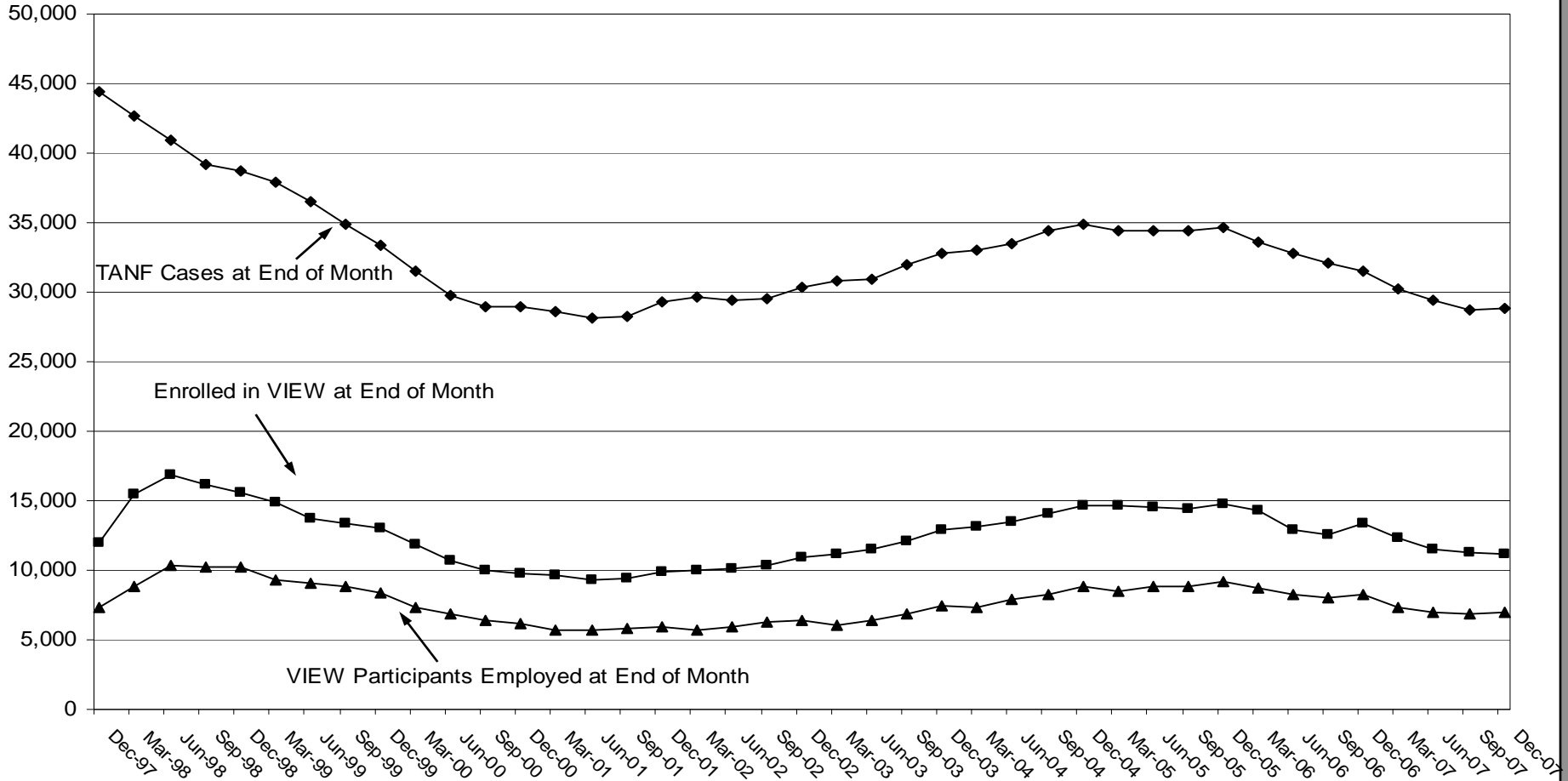


## TANF Cases, VIEW Enrolled, and Employed VIEW Participants

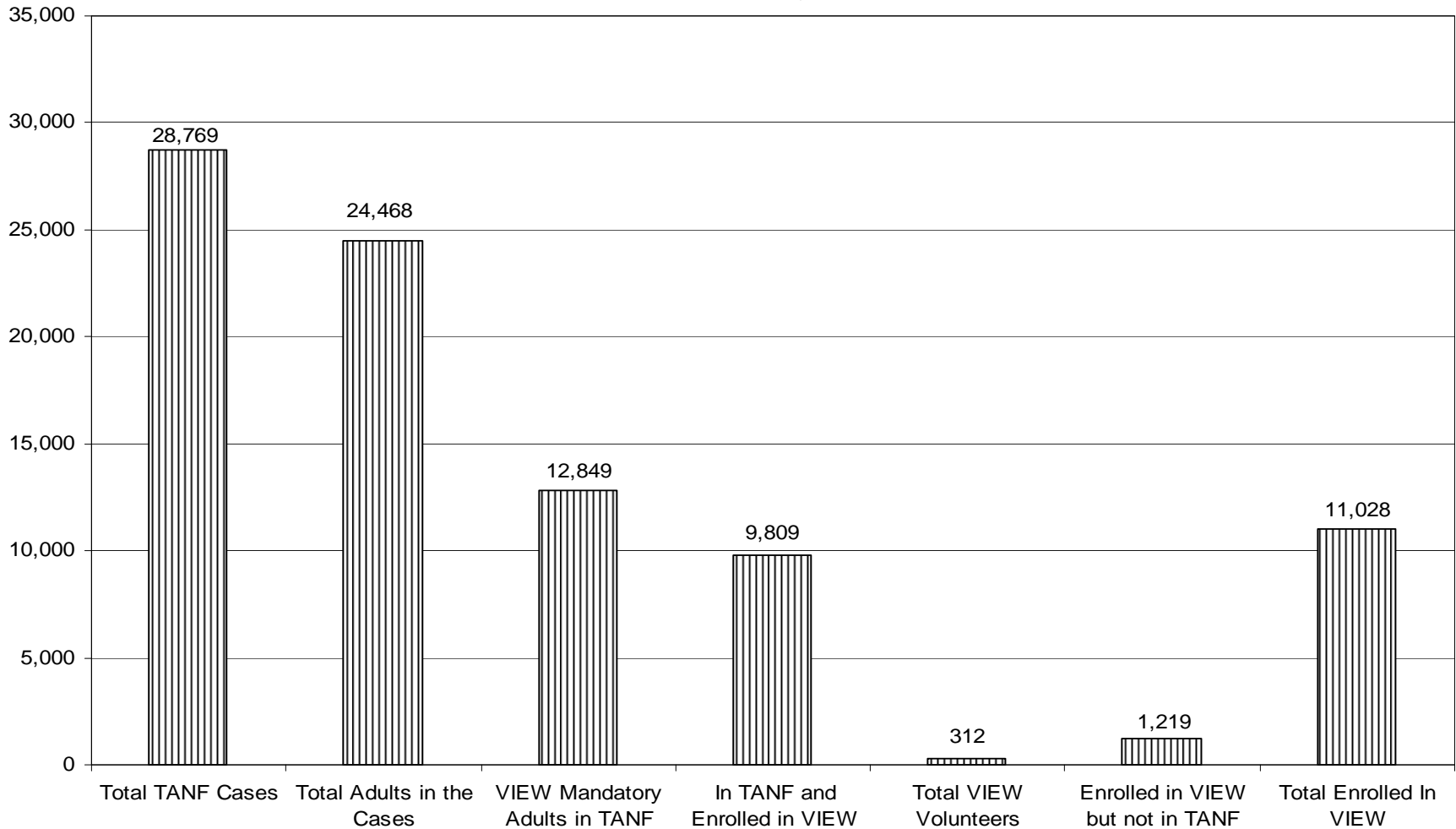
Beginning in October 1997, the Month of VIEW Implementation Statewide  
Asymmetrical Three Month Moving Averages. December is the last month



This graph shows that the number enrolled in VIEW increased during early implementation and then generally tracked the number of cases, until the very recent effect of reduced exemptions due to TANF reauthorization. A VIEW case may remain open for five to six months or more after the TANF case closes, if job follow-up is being done and the case has not been converted to the VIEW Transitional Payment program. It is unlikely that the number employed will ever equal the number enrolled because there are always new enrollees without employment, and there are some enrollees in work activities, other than employment, that meet VIEW requirements. Information for this graph was taken from the Statewide Work Activity tables on page four of this report and reports of previous months. It includes TANF-UP

# Chart Displaying the Relationships Between TANF and VIEW Participation

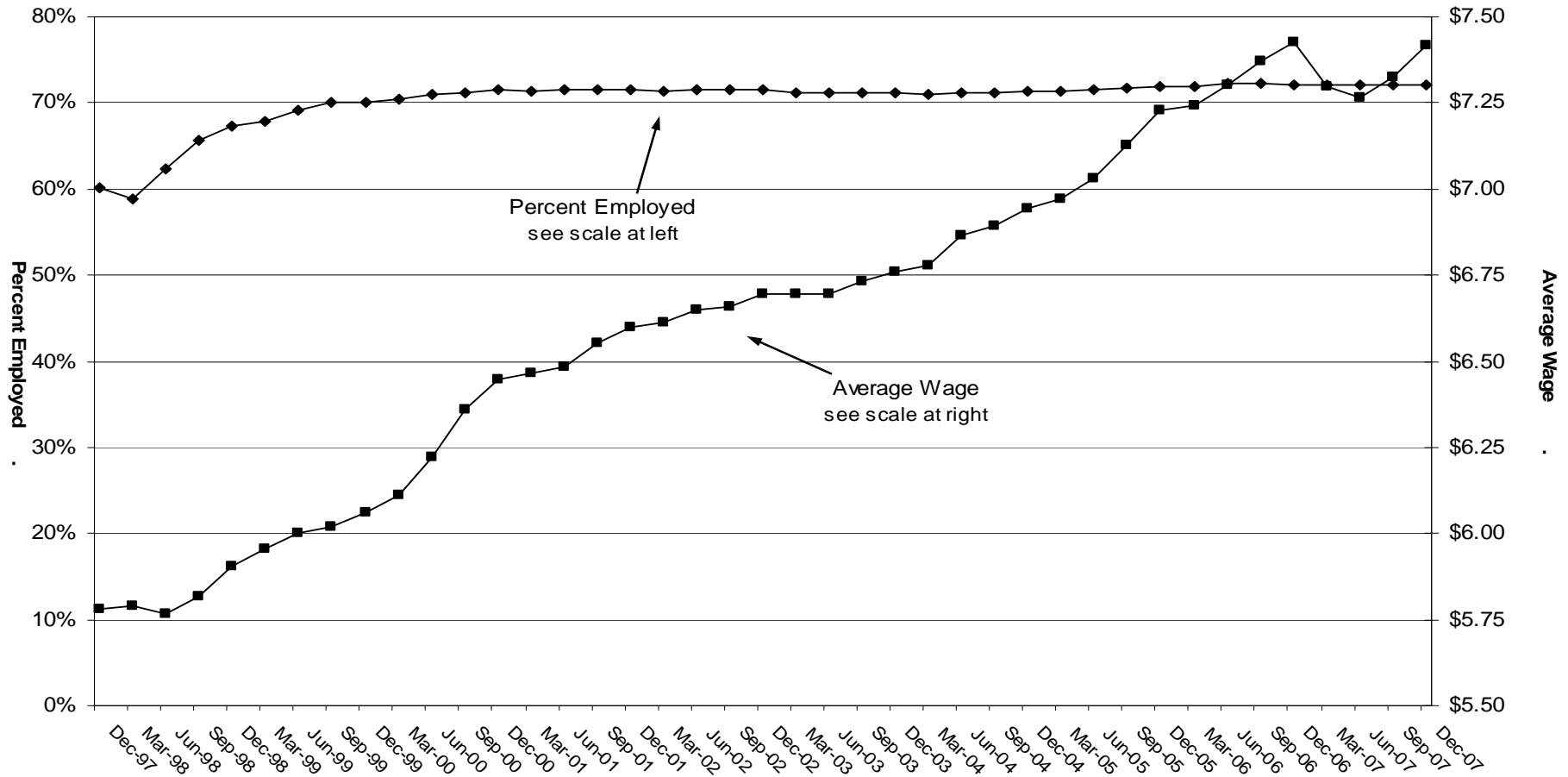
December 31, 2007



This chart illustrates that there are a large number of adults who are exempt from VIEW and that many of the VIEW enrollees have had their TANF cases closed. They are now in a job follow-up phase of VIEW. They have not had their VIEW case closed and become enrolled in the VIEW Transitional Payment program. The source of this information is a monthly TANF extract from ADAPT and the monthly extract from ESPAS, the VIEW automated data system. The extracts were made at the beginning of January and represent end of December data. TANF-UP is included.

## VIEW Percent Total Employed and Average Wage at End of Month

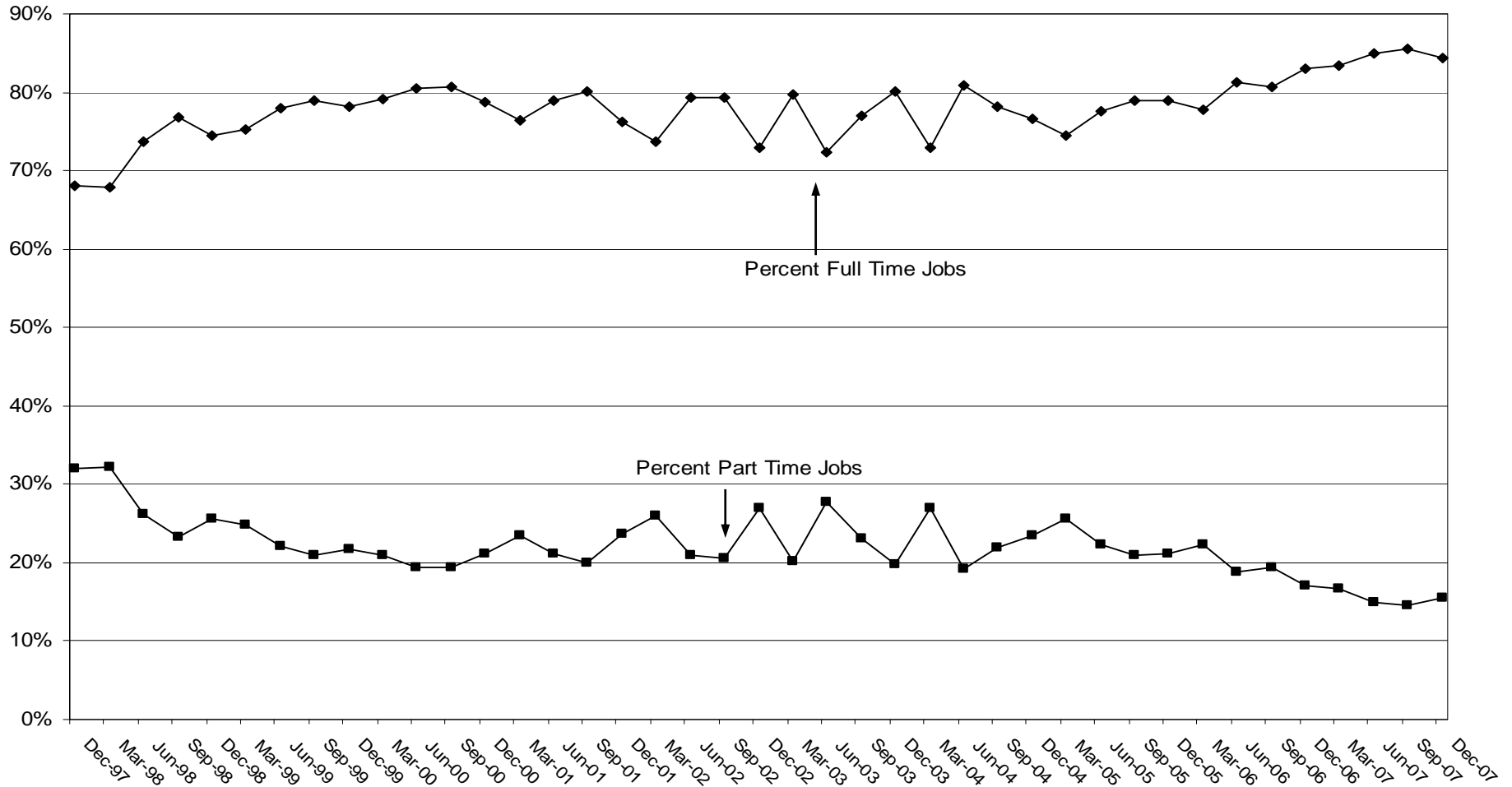
Beginning in October 1997, the Month of VIEW Implementation Statewide  
Asymmetrical Three Month Moving Averages. December is the last month



This graph shows that the average wage has seen a general increase as the percent of VIEW employed initially increased and then leveled. Besides employment, VIEW participants may be in various other activities or initial assessment and job search. It is unlikely that the percent employed will rise much further. The wages shown are generally the initial wages. When the average wage was calculated at about the end of December, it was \$7.58 rather than the \$7.41 initial wages used to calculate wages shown on this graph. See page 42 of the report for an explanation of why the VIEW average wage might decline after October 2006 and note 6 on page 44 for the effect of the increase in minimum wage. Information for this graph was taken from the Statewide Work Activity tables on page four of this report and reports of previous months.

# Percent of Jobs Found During a Month That Were Full Time and Percent Part Time

Beginning in October 1997, the Month of VIEW Implementation Statewide  
Asymmetrical Three Month Moving Averages. December is the last month



This graph illustrates an initial trend of VIEW participants obtaining a greater percent of full time jobs than part time. After the initial months, the trend seems to be fairly level with a more recent increase in the percent full time which probably reflects increased emphasis on meeting the required TANF work participation rate. Information for this graph was taken from the Statewide Work Activity tables on page four of this report and reports of previous months.