

VIRGINIA INDEPENDENCE PROGRAM

MONTHLY REPORT
Including Graphs of Statewide Trends
December 2009

Prepared by:
Virginia Department of Social Services January 26, 2010

Monthly Report, December 2009

Table of Contents

Work Participation Estimates (from the VDSS data warehouse) (A work participation estimate percent should not be compared to a percent in a work activity in the main body of the report which includes only clients in VIEW and does not consider the number of hours in a work activity during a month)	i-vi
TANF, TANF-UP Case Activity.....	1
Graphs of Case Activity.....	at end
VIEW Work Activity	
Statewide	4
Graphs of Statewide Activity.....	at end
EDD1.....	8
EDD2.....	9
EDD3.....	10
EDD4.....	11
EDD5 & EDD18.....	12
EDD6.....	13
EDD7.....	14
EDD8.....	15
EDD9.....	16
EDD10.....	17
EDD11.....	18
EDD14.....	19
EDD1.....	20
EDD3.....	21
EDD11.....	22
EDD15.....	23
EDD17.....	24
VIEW Year to Date Rankings.....	25-27
VIEW Cumulative Rankings.....	28-30
VIEW Timeliness Measures.....	31-39
Child Support Enforcement.....	40
Diversion.....	41
VIEW Definition Sheet and Endnotes.....	42-44

Estimated Work Participation Rates for December

These are estimated locality December 2009 work participation rates that include clients receiving either TANF or VIEW Transitional Payments (VTP). The official participation rate will be calculated by the Federal Administration for Children and Families from more complete files that are submitted quarterly. The estimated December statewide rate is 42% with a denominator of 19,823 and a numerator of 8,328.

FIPS Code	Locality	Denominator	Numerator	Participation Percent	FIPS Code	Locality	Denominator	Numerator	Participation Percent
001	Accomack	78	23	29%	061	Fauquier	71	30	42%
003	Albemarle	71	34	48%	063	Floyd	21	8	38%
005	Alleghany/Covington	72	11	15%	065	Fluvanna	17	0	0%
007	Amelia	30	11	37%	067	Franklin County	125	41	33%
009	Amherst	45	18	40%	069	Frederick	78	8	10%
011	Appomattox	48	27	56%	071	Giles	19	6	32%
013	Arlington	138	47	34%	073	Gloucester	64	18	28%
015	Augusta/S'ton/W'boro	337	188	56%	075	Goochland	23	2	9%
017	Bath	3	0	0%	077	Grayson	27	10	37%
019	Bedford County/City	120	48	40%	079	Greene	33	13	39%
021	Bland	8	6	75%	081	Greensville/Emporia	89	19	21%
023	Botetourt	18	0	0%	083	Halifax	113	29	26%
025	Brunswick	76	37	49%	085	Hanover	111	20	18%
027	Buchanan	67	34	51%	087	Henrico	924	426	46%
029	Buckingham	46	21	46%	089	Henry/Martinsville	327	111	34%
031	Campbell	168	72	43%	091	Highland	0	0	N/A
033	Caroline	113	40	35%	093	Isle of Wight	79	39	49%
035	Carroll	68	32	47%	095	James City	85	38	45%
036	Charles City	9	2	22%	097	King and Queen	11	6	55%
037	Charlotte	38	20	53%	099	King George	23	10	43%
041	Chesterfield/Col Hgts	551	246	45%	101	King William	32	19	59%
043	Clarke	6	4	67%	103	Lancaster	23	6	26%
045	Craig	4	3	75%	105	Lee	133	51	38%
047	Culpeper	83	33	40%	107	Loudoun	170	58	34%
049	Cumberland	42	21	50%	109	Louisa	54	27	50%
051	Dickensen	41	16	39%	111	Lunenburg	38	0	0%
053	Dinwiddie	48	17	35%	113	Madison	17	9	53%
057	Essex	76	29	38%	115	Mathews	9	0	0%
059	Fairfax/Falls Church	662	263	40%	117	Mecklenburg	100	35	35%

Estimated Work Participation Rates, cont.

FIPS Code	Locality	Denominator	Numerator	Participation Percent	FIPS Code	Locality	Denominator	Numerator	Participation Percent
119	Middlesex	19	4	21%	187	Warren	71	35	49%
121	Montgomery	217	116	53%	191	Washington	110	49	45%
125	Nelson	15	6	40%	193	Westmoreland	39	3	8%
127	New Kent	18	0	0%	195	Wise	255	96	38%
131	Northampton	61	22	36%	197	Wythe	77	28	36%
133	Northumberland	12	6	50%	199	York/Poquoson	70	32	46%
135	Nottoway	78	3	4%	510	Alexandria	309	136	44%
137	Orange	54	17	31%	520	Bristol	133	72	54%
139	Page	39	16	41%	540	Charlottesville	200	87	44%
141	Patrick	60	28	47%	550	Chesapeake	798	324	41%
143	Pittsylvania	87	29	33%	590	Danville	248	111	45%
145	Powhatan	24	12	50%	620	Franklin City	46	14	30%
147	Prince Edward	79	36	46%	630	Fredericksburg	120	65	54%
149	Prince George	40	14	35%	640	Galax	52	15	29%
153	Prince William	778	288	37%	650	Hampton	723	373	52%
155	Pulaski	76	33	43%	670	Hopewell	234	22	9%
157	Rappahannock	3	1	33%	680	Lynchburg	353	173	49%
159	Richmond County	17	4	24%	683	Manassas	91	29	32%
161	Roanoke County	175	96	55%	685	Manassas Park	29	15	52%
163	Rockbridge/BV/Lex	45	9	20%	700	Newport News	1,066	487	46%
165	Rockingham/H'burg	161	84	52%	710	Norfolk	1,316	679	52%
167	Russell	129	64	50%	720	Norton	39	15	38%
169	Scott	106	41	39%	730	Petersburg	440	165	38%
171	Shenandoah	19	7	37%	740	Portsmouth	708	303	43%
173	Smyth	89	37	42%	750	Radford	38	20	53%
175	Southampton	66	15	23%	760	Richmond City	1,770	678	38%
177	Spotsylvania	235	98	42%	770	Roanoke City	644	226	35%
179	Stafford	188	86	46%	800	Suffolk	199	118	59%
181	Surry	33	12	36%	810	Virginia Beach	554	293	53%
183	Sussex	49	26	53%	830	Williamsburg	19	8	42%
185	Tazewell	155	72	46%	840	Winchester	63	33	52%

The work participation rate is calculated by determining the number of TANF and VTP recipients who are considered to be “work-eligible individuals.” The cases containing these client become the “denominator.” To determine the numerator, activities of each of the work eligible persons is examined to estimate if Federal work participation requirements are met for the month. While not complex, the requirements are fairly detailed. They are enumerated in the reauthorization of the Temporary Assistance for Needy Families Program, Interim Final Rule as promulgated by the Department of Health and Human Services, Administration for Children and Families. The rate presented here is the all families rate, i. e. the overall rate, including VTP..

Estimated TANF only Work Participation Rates for December

These are estimated locality December 2009 work participation rates that include only clients receiving TANF. The official participation rate for these cases will be calculated by the Federal Administration for Children and Families from more complete files that are submitted quarterly. The estimated December statewide rate is 37% with a denominator of 17,850 and a numerator of 6,587. VTP only estimates are on pages v and vi.

FIPS Code	Locality	Denominator	Numerator	Participation Percent	FIPS Code	Locality	Denominator	Numerator	Participation Percent
001	Accomack	71	16	23%	061	Fauquier	59	18	31%
003	Albemarle	50	16	32%	063	Floyd	19	7	37%
005	Alleghany/Covington	65	5	8%	065	Fluvanna	16	0	0%
007	Amelia	30	11	37%	067	Franklin County	114	32	28%
009	Amherst	40	13	33%	069	Frederick	68	0	0%
011	Appomattox	46	26	57%	071	Giles	17	4	24%
013	Arlington	124	35	28%	073	Gloucester	59	14	24%
015	Augusta/S'ton/W'boro	297	149	50%	075	Goochland	23	2	9%
017	Bath	3	0	0%	077	Grayson	25	8	32%
019	Bedford County/City	109	37	34%	079	Greene	29	9	31%
021	Bland	6	4	67%	081	Greensville/Emporia	84	14	17%
023	Botetourt	16	0	0%	083	Halifax	106	22	21%
025	Brunswick	69	30	43%	085	Hanover	102	13	13%
027	Buchanan	56	23	41%	087	Henrico	841	356	42%
029	Buckingham	42	17	40%	089	Henry/Martinsville	308	93	30%
031	Campbell	145	50	34%	091	Highland	0	0	N/A
033	Caroline	101	32	32%	093	Isle of Wight	67	30	45%
035	Carroll	63	27	43%	095	James City	74	29	39%
036	Charles City	8	2	25%	097	King and Queen	10	5	50%
037	Charlotte	32	15	47%	099	King George	18	5	28%
041	Chesterfield/Col Hgts	498	197	40%	101	King William	27	17	63%
043	Clarke	5	3	60%	103	Lancaster	23	6	26%
045	Craig	3	2	67%	105	Lee	123	43	35%
047	Culpeper	73	25	34%	107	Loudoun	149	37	25%
049	Cumberland	39	19	49%	109	Louisa	49	24	49%
051	Dickensen	33	9	27%	111	Lunenburg	35	0	0%
053	Dinwiddie	36	5	14%	113	Madison	14	6	43%
057	Essex	73	26	36%	115	Mathews	8	0	0%
059	Fairfax/Falls Church	580	194	33%	117	Mecklenburg	89	24	27%

Estimated TANF Only Work Participation Rates, cont.

FIPS Code	Locality	Denominator	Numerator	Participation Percent	FIPS Code	Locality	Denominator	Numerator	Participation Percent
119	Middlesex	18	3	17%	187	Warren	59	25	42%
121	Montgomery	183	85	46%	191	Washington	100	39	39%
125	Nelson	11	2	18%	193	Westmoreland	35	3	9%
127	New Kent	17	0	0%	195	Wise	228	72	32%
131	Northampton	55	16	29%	197	Wythe	71	22	31%
133	Northumberland	9	3	33%	199	York/Poquoson	66	28	42%
135	Nottoway	74	1	1%	510	Alexandria	276	104	38%
137	Orange	50	16	32%	520	Bristol	126	65	52%
139	Page	34	12	35%	540	Charlottesville	182	69	38%
141	Patrick	55	23	42%	550	Chesapeake	745	281	38%
143	Pittsylvania	82	25	30%	590	Danville	227	92	41%
145	Powhatan	20	8	40%	620	Franklin City	41	10	24%
147	Prince Edward	73	31	42%	630	Fredericksburg	98	46	47%
149	Prince George	37	11	30%	640	Galax	46	9	20%
153	Prince William	670	188	28%	650	Hampton	653	315	48%
155	Pulaski	66	23	35%	670	Hopewell	218	9	4%
157	Rappahannock	2	0	0%	680	Lynchburg	327	149	46%
159	Richmond County	17	4	24%	683	Manassas	79	17	22%
161	Roanoke County	152	74	49%	685	Manassas Park	24	11	46%
163	Rockbridge/BV/Lex	41	7	17%	700	Newport News	955	389	41%
165	Rockingham/H'burg	138	61	44%	710	Norfolk	1,230	600	49%
167	Russell	121	56	46%	720	Norton	34	11	32%
169	Scott	94	35	37%	730	Petersburg	407	139	34%
171	Shenandoah	17	5	29%	740	Portsmouth	634	233	37%
173	Smyth	85	33	39%	750	Radford	34	16	47%
175	Southampton	57	9	16%	760	Richmond City	1,606	542	34%
177	Spotsylvania	222	90	41%	770	Roanoke City	573	161	28%
179	Stafford	170	72	42%	800	Suffolk	181	100	55%
181	Surry	30	9	30%	810	Virginia Beach	484	225	46%
183	Sussex	39	16	41%	830	Williamsburg	13	4	31%
185	Tazewell	137	54	39%	840	Winchester	53	23	43%

The work participation rate is calculated by determining the number of TANF recipients who are considered to be "work-eligible individuals." The cases containing these client become the "denominator." To determine the numerator, activities of each of the work eligible persons is examined to estimate if Federal work participation requirements are met for the month. While not complex, the requirements are fairly detailed. They are enumerated in the reauthorization of the Temporary Assistance for Needy Families Program, Interim Final Rule as promulgated by the Department of Health and Human Services, Administration for Children and Families. The rates presented here are for the TANF all family rate not including VTP.

Estimated VTP only Work Participation Rates for December

These are estimated locality December 2009 work participation rates that include only clients receiving VTP. The official participation rate for these cases will be calculated by the Federal Administration for Children and Families from more complete files that are submitted quarterly. The estimated December statewide rate is 88% with a denominator of 1,973 and a numerator of 1,741. TANF only estimates are on pages iii and iv.

FIPS Code	Locality	Denominator	Numerator	Participation Percent	FIPS Code	Locality	Denominator	Numerator	Participation Percent
001	<i>Accomack</i>	7	7	100%	061	<i>Fauquier</i>	12	12	100%
003	<i>Albemarle</i>	21	18	86%	063	<i>Floyd</i>	2	1	50%
005	<i>Alleghany/Covington</i>	7	6	86%	065	<i>Fluvanna</i>	1	0	0%
007	<i>Amelia</i>	0	0	N/A	067	<i>Franklin County</i>	11	9	82%
009	<i>Amherst</i>	5	5	100%	069	<i>Frederick</i>	10	8	80%
011	<i>Appomattox</i>	2	1	50%	071	<i>Giles</i>	2	2	100%
013	<i>Arlington</i>	14	12	86%	073	<i>Gloucester</i>	5	4	80%
015	<i>Augusta/S'ton/W'boro</i>	40	39	98%	075	<i>Goochland</i>	0	0	N/A
017	<i>Bath</i>	0	0	N/A	077	<i>Grayson</i>	2	2	100%
019	<i>Bedford County/City</i>	11	11	100%	079	<i>Greene</i>	4	4	100%
021	<i>Bland</i>	2	2	100%	081	<i>Greensville/Emporia</i>	5	5	100%
023	<i>Botetourt</i>	2	0	0%	083	<i>Halifax</i>	7	7	100%
025	<i>Brunswick</i>	7	7	100%	085	<i>Hanover</i>	9	7	78%
027	<i>Buchanan</i>	11	11	100%	087	<i>Henrico</i>	83	70	84%
029	<i>Buckingham</i>	4	4	100%	089	<i>Henry/Martinsville</i>	19	18	95%
031	<i>Campbell</i>	23	22	96%	091	<i>Highland</i>	0	0	N/A
033	<i>Caroline</i>	12	8	67%	093	<i>Isle of Wight</i>	12	9	75%
035	<i>Carroll</i>	5	5	100%	095	<i>James City</i>	11	9	82%
036	<i>Charles City</i>	1	0	0%	097	<i>King and Queen</i>	1	1	100%
037	<i>Charlotte</i>	6	5	83%	099	<i>King George</i>	5	5	100%
041	<i>Chesterfield/Col Hgts</i>	53	49	92%	101	<i>King William</i>	5	2	40%
043	<i>Clarke</i>	1	1	100%	103	<i>Lancaster</i>	0	0	N/A
045	<i>Craig</i>	1	1	100%	105	<i>Lee</i>	10	8	80%
047	<i>Culpeper</i>	10	8	80%	107	<i>Loudoun</i>	21	21	100%
049	<i>Cumberland</i>	3	2	67%	109	<i>Louisa</i>	5	3	60%
051	<i>Dickensen</i>	8	7	88%	111	<i>Lunenburg</i>	3	0	0%
053	<i>Dinwiddie</i>	12	12	100%	113	<i>Madison</i>	3	3	100%
057	<i>Essex</i>	3	3	100%	115	<i>Mathews</i>	1	0	0%
059	<i>Fairfax/Falls Church</i>	82	69	84%	117	<i>Mecklenburg</i>	11	11	100%

Estimated VTP Only Work Participation Rates, cont.

FIPS Code	Locality	Denominator	Numerator	Participation Percent	FIPS Code	Locality	Denominator	Numerator	Participation Percent
119	Middlesex	1	1	100%	187	Warren	12	10	83%
121	Montgomery	34	31	91%	191	Washington	10	10	100%
125	Nelson	4	4	100%	193	Westmoreland	4	0	0%
127	New Kent	1	0	0%	195	Wise	27	24	89%
131	Northampton	6	6	100%	197	Wythe	6	6	100%
133	Northumberland	3	3	100%	199	York/Poquoson	4	4	100%
135	Nottoway	4	2	50%	510	Alexandria	33	32	97%
137	Orange	4	1	25%	520	Bristol	7	7	100%
139	Page	5	4	80%	540	Charlottesville	18	18	100%
141	Patrick	5	5	100%	550	Chesapeake	53	43	81%
143	Pittsylvania	5	4	80%	590	Danville	21	19	90%
145	Powhatan	4	4	100%	620	Franklin City	5	4	80%
147	Prince Edward	6	5	83%	630	Fredericksburg	22	19	86%
149	Prince George	3	3	100%	640	Galax	6	6	100%
153	Prince William	108	100	93%	650	Hampton	70	58	83%
155	Pulaski	10	10	100%	670	Hopewell	16	13	81%
157	Rappahannock	1	1	100%	680	Lynchburg	26	24	92%
159	Richmond County	0	0	N/A	683	Manassas	12	12	100%
161	Roanoke County	23	22	96%	685	Manassas Park	5	4	80%
163	Rockbridge/BV/Lex	4	2	50%	700	Newport News	111	98	88%
165	Rockingham/H'burg	23	23	100%	710	Norfolk	86	79	92%
167	Russell	8	8	100%	720	Norton	5	4	80%
169	Scott	12	6	50%	730	Petersburg	33	26	79%
171	Shenandoah	2	2	100%	740	Portsmouth	74	70	95%
173	Smyth	4	4	100%	750	Radford	4	4	100%
175	Southampton	9	6	67%	760	Richmond City	164	136	83%
177	Spotsylvania	13	8	62%	770	Roanoke City	71	65	92%
179	Stafford	18	14	78%	800	Suffolk	18	18	100%
181	Surry	3	3	100%	810	Virginia Beach	70	68	97%
183	Sussex	10	10	100%	830	Williamsburg	6	4	67%
185	Tazewell	18	18	100%	840	Winchester	10	10	100%

All VTP recipients are considered to be “work-eligible individuals.” Thus, all VTP cases are in the “denominator.” To determine the numerator, job follow-up entries are reviewed to estimate if Federal work participation requirements are met for the month. The basic requirement for VTP recipients is employment for at least 30 hours per week. The requirement is contained in the reauthorization of the Temporary Assistance for Needy Families Program, Interim Final Rule as promulgated by the Department of Health and Human Services, Administration for Children and Families. The rates presented here are also sometimes referred to as the rates for the maintenance of effort program caseload. .

TANF

	<i>Total Statewide</i>				
TANF Case Activity	Dec-09	Dec-08	Change from Dec-08	Jun-95	Change from Jun-95
Applications Received ¹	4,413	4,863	-9%	4,807	-8%
Applications Denied or Otherwise Disposed Of	2,702	2,895	-7%	1,658	63%
Applications Approved	2,368	2,600	-9%	2,820	-16%
Cases Closed *	2,331	2,216	5%	4,476	-48%
Cases at End of Month	34,394	29,304	17%	67,995	-49%
Cases Paid During Month ²	35,279	30,741	15%	70,403	-50%

•The database indicates that of the 2,331 closed cases, 831 were VIEW cases at closure, of which 476 closed with employment. Of the VIEW cases, 157 were closed after 24 months participation, and of those, 104 closed with employment. A case that is indicated to have been closed after 24 months may be reinstated for various reasons.

TANF-UP

	<i>Total Statewide</i>				
TANF-UP Case Activity	Dec-09	Dec-08	Change from Dec-08	Jun-95	Change from Jun-95
Applications Received ¹	525	593	-11%	338	55%
Applications Denied or Otherwise Disposed Of	371	314	18%	232	60%
Applications Approved	289	291	-1%	81	257%
Cases Closed *	268	175	53%	107	150%
Cases at End of Month	2,151	1,202	79%	321	570%
Cases Paid During Month ²	2,266	1,443	57%	394	475%

•The database indicates that of the 268 closed cases, 133 were VIEW cases at closure, of which 78 closed with employment. Of the VIEW cases, thirteen were closed after 24 months participation, and of those, eight closed with employment. A case that is indicated to have been closed after 24 months may be reinstated for various reasons.

Statewide - Status through December 31, 2009

TANF Cases as of the end of 12/31/09 and Work Activity as of 12/31/09

Current Data	Total State	Total ED 1	Total ED 2	Total ED 3	Total ED 4	Total ED 5	Total ED 6	Total ED 7	Total ED 8	Total ED 9	Total ED 10	Total ED 11	Total ED 12	Total ED 13	Total ED 14	Total ED 15	Total ED 16	Total ED 17	Total ED 18
TANF Cases End of Month ¹⁰	36,545	2,049	1,151	2,818	1,053	525	4,144	469	762	1,349	1,767	1,121	5,855	1,129	445	3,473	1,400	6,739	296
Total Enrolled in VIEW	15,586	814	501	1,155	478	244	1,739	173	319	656	624	556	2,477	621	191	1,454	695	2,770	119
Part. in a Work Activity	10,953	571	352	749	361	171	1,330	106	257	452	423	375	1,654	401	149	1,041	403	2,109	49
% of Enrolled	70%	70%	70%	65%	76%	70%	76%	61%	81%	69%	68%	67%	67%	65%	78%	72%	58%	76%	41%
Part. Assigned to Inactive	154	9	5	8	0	10	22	6	2	4	2	3	18	22	3	6	11	22	1
Participants Employed	7,398	425	246	579	264	112	769	82	148	339	275	243	928	295	102	774	281	1,501	35
% of Enrolled	47%	52%	49%	50%	55%	46%	44%	47%	46%	52%	44%	44%	37%	48%	53%	53%	40%	54%	29%
Full Time	6,005	390	202	468	222	85	597	69	102	267	228	169	726	238	78	634	230	1,275	25
Part Time	1,393	35	44	111	42	27	172	13	46	72	47	74	202	57	24	140	51	226	10
Average Wage ⁶	\$7.98	\$7.37	\$7.60	\$7.87	\$7.75	\$8.12	\$9.20	\$8.27	\$8.43	\$7.68	\$7.62	\$7.62	\$8.11	\$8.22	\$7.69	\$7.88	\$7.77	\$7.77	\$7.73
Average Monthly Earnings ⁷	\$1,064	\$996	\$1,025	\$1,054	\$1,033	\$1,044	\$1,227	\$1,107	\$1,021	\$1,039	\$1,029	\$946	\$1,087	\$1,068	\$1,013	\$1,063	\$1,038	\$1,046	\$994

Work Activity of all enrolled July 1, 2009 – December 31, 2009, Year to Date

State Fiscal Year to Date	Total State	Total ED 1	Total ED 2	Total ED 3	Total ED 4	Total ED 5	Total ED 6	Total ED 7	Total ED 8	Total ED 9	Total ED 10	Total ED 11	Total ED 12	Total ED 13	Total ED 14	Total ED 15	Total ED 16	Total ED 17	Total ED 18
Individuals Referred	18,979	1,071	735	1,675	687	344	2,145	250	468	760	996	581	2,696	655	239	1,730	621	3,156	170
Total Enrolled in VIEW	26,397	1,423	1,002	2,156	794	497	2,935	308	583	1,103	1,216	900	3,892	972	341	2,485	1,054	4,532	204
Part. in a Work Activity	23,038	1,257	898	1,840	743	414	2,603	270	541	982	1,061	771	3,380	842	297	2,171	846	3,958	164
% of Total Enrolled	87%	88%	90%	85%	94%	83%	89%	88%	93%	89%	87%	86%	87%	87%	87%	87%	80%	87%	80%
Participants Employed	13,140	766	477	1,099	431	249	1,418	161	287	591	502	385	1,649	513	177	1,336	480	2,545	74
% of Total Enrolled	50%	54%	48%	51%	54%	50%	48%	52%	49%	54%	41%	43%	42%	53%	52%	54%	46%	56%	36%
Average Wage ⁶	\$8.10	\$7.37	\$7.51	\$7.96	\$7.77	\$8.22	\$9.69	\$8.30	\$8.32	\$7.79	\$7.62	\$7.60	\$8.28	\$8.33	\$7.86	\$7.95	\$7.91	\$7.82	\$7.97
Average Monthly Earnings ⁷	\$1,075	\$993	\$991	\$1,077	\$1,031	\$1,068	\$1,295	\$1,100	\$970	\$1,029	\$1,003	\$936	\$1,110	\$1,070	\$1,004	\$1,057	\$1,061	\$1,051	\$1,052
Three Months Employment	72%	72%	64%	67%	74%	59%	76%	73%	68%	67%	64%	74%	75%	77%	74%	73%	72%	74%	77%

Work Activity of all enrolled in VIEW Since Program Implementation 7/1/95

Cumulative Data	Total State	Total ED 1	Total ED 2	Total ED 3	Total ED 4	Total ED 5	Total ED 6	Total ED 7	Total ED 8	Total ED 9	Total ED 10	Total ED 11	Total ED 12	Total ED 13	Total ED 14	Total ED 15	Total ED 16	Total ED 17	Total ED 18
Individuals Referred	230,628	15,115	8,717	16,973	6,616	4,176	28,632	3,288	4,979	8,643	11,007	6,566	30,647	6,518	2,971	21,696	7,841	44,117	2,126
Total Enrolled in VIEW ⁵	173,394	11,449	7,243	12,624	4,962	3,024	21,840	2,459	3,760	7,063	8,738	4,938	23,526	4,587	2,134	15,823	6,045	31,644	1,535
Part. in a Work Activity	166,126	10,998	6,913	12,081	4,823	2,891	21,121	2,371	3,662	6,684	8,421	4,707	22,694	4,383	2,011	15,128	5,762	30,003	1,473
% of Total Enrolled	96%	96%	95%	96%	97%	96%	97%	96%	97%	95%	96%	95%	96%	96%	94%	96%	95%	95%	96%
Participants Employed	120,633	7,270	4,831	8,863	3,504	2,062	15,743	1,674	2,864	4,964	5,563	3,049	16,342	3,147	1,384	11,442	4,212	22,840	879
% of Total Enrolled	70%	63%	67%	70%	71%	68%	72%	68%	76%	70%	64%	62%	69%	69%	65%	72%	70%	72%	57%
Average Wage ⁶	\$6.93	\$6.02	\$6.09	\$6.89	\$6.93	\$7.10	\$8.42	\$7.24	\$7.21	\$6.34	\$6.20	\$6.48	\$7.16	\$7.65	\$6.74	\$6.79	\$6.80	\$6.66	\$6.43
Average Monthly Earnings ⁷	\$925	\$794	\$832	\$933	\$927	\$963	\$1,127	\$963	\$937	\$830	\$832	\$852	\$972	\$1,007	\$872	\$898	\$927	\$879	\$812
Five Months Employment ⁹	57%	58%	52%	50%	56%	54%	63%	54%	55%	58%	54%	55%	60%	54%	46%	56%	55%	57%	62%

EDD1 - Southwest Region: Status through December 31, 2009

TANF Cases as of the end of 12/31/09 and Work Activity as of 12/31/09

Current Data	Total EDD1	Buchanan	Dickenson	Lee	Russell	Scott	Tazewell	Wise	Norton
TANF Cases End of Month ¹⁰	2,049	206	107	304	284	227	335	526	60
Total Enrolled in VIEW ³	814	54	40	133	137	116	115	195	24
Participants in a Work Activity	571	44	22	98	104	64	98	123	18
% of Enrolled	70%	81%	55%	74%	76%	55%	85%	63%	75%
Participants Assigned to Inactive	9	0	0	1	7	0	0	1	0
Participants Employed	425	25	21	88	51	55	65	104	16
% of Enrolled	52%	46%	53%	66%	37%	47%	57%	53%	67%
Full Time	390	25	19	80	44	51	59	96	16
Part Time	35	0	2	8	7	4	6	8	0
Average Wage ⁶	\$7.37	\$8.06	\$7.64	\$7.01	\$7.28	\$7.27	\$7.50	\$7.54	\$6.96
Average Monthly Earnings ⁷	\$996	\$1,146	\$1,015	\$919	\$956	\$1,018	\$1,002	\$1,029	\$963

Work Activity of all enrolled July 1, 2009 – December 31, 2009, Year to Date

State Fiscal Year to Date	Total EDD1	Buchanan	Dickenson	Lee	Russell	Scott	Tazewell	Wise	Norton
Individuals Referred	1,071	74	59	143	146	116	203	295	35
Total Enrolled in VIEW ³	1,423	108	87	222	219	155	224	361	47
Participants in a Work Activity	1,257	95	72	198	200	139	206	316	31
% of Total Enrolled	88%	88%	83%	89%	91%	90%	92%	88%	66%
Participants Employed	766	54	51	134	103	74	123	203	24
% of Total Enrolled	54%	50%	59%	60%	47%	48%	55%	56%	51%
Average Wage ⁶	\$7.37	\$8.12	\$7.40	\$7.08	\$7.27	\$7.28	\$7.44	\$7.45	\$7.05
Average Monthly Earnings ⁷	\$993	\$1,168	\$998	\$917	\$948	\$1,015	\$975	\$1,027	\$953
Three Months Employment ⁸	72%	66%	62%	83%	60%	93%	71%	69%	82%

Work Activity of all enrolled in VIEW Since Program Implementation 7/1/95

Cumulative Data	Total EDD1	Buchanan	Dickenson	Lee	Russell	Scott	Tazewell	Wise	Norton
Individuals Referred	15,115	1,556	1,078	2,100	2,064	1,428	2,906	3,503	480
Total Enrolled in VIEW ^{3,5}	11,449	1,178	817	1,568	1,638	1,002	2,207	2,663	376
Participants in a Work Activity	10,998	1,094	772	1,549	1,554	979	2,127	2,576	347
% of Total Enrolled	96%	93%	94%	99%	95%	98%	96%	97%	92%
Participants Employed	7,270	618	488	1,032	1,026	590	1,516	1,715	285
% of Total Enrolled	63%	52%	60%	66%	63%	59%	69%	64%	76%
Average Wage ⁶	\$6.02	\$6.24	\$6.10	\$5.71	\$6.23	\$6.26	\$5.96	\$6.00	\$5.86
Average Monthly Earnings ⁷	\$794	\$812	\$802	\$758	\$836	\$861	\$785	\$785	\$723
Five Months Employment ⁹	58%	55%	49%	60%	58%	65%	57%	57%	60%

VIEW Work Activity

EDD2 – Bristol-Galax Region: Status through December 31, 2009

TANF Cases as of the end of 12/31/09 and Work Activity as of 12/31/09

Current Data	Total EDD2	Bland	Carroll	Grayson	Smyth	Wash.	Wythe	Bristol	Galax
TANF Cases End of Month ¹⁰	1,151	16	141	45	207	231	142	279	90
Total Enrolled in VIEW ³	501	9	77	14	82	90	49	133	47
Participants in a Work Activity	352	5	61	11	69	55	27	102	22
% of Enrolled	70%	56%	79%	79%	84%	61%	55%	77%	47%
Participants Assigned to Inactive	5	0	0	1	0	0	1	3	0
Participants Employed	246	4	46	6	41	48	21	60	20
% of Enrolled	49%	44%	60%	43%	50%	53%	43%	45%	43%
Full Time	202	2	33	5	38	39	20	49	16
Part Time	44	2	13	1	3	9	1	11	4
Average Wage ⁶	\$7.60	\$7.25	\$7.47	\$7.82	\$7.79	\$7.39	\$7.66	\$7.86	\$7.18
Average Monthly Earnings ⁷	\$1,025	\$858	\$985	\$1,122	\$1,088	\$990	\$1,008	\$1,044	\$1,035

Work Activity of all enrolled July 1, 2009 – December 31, 2009, Year to Date

State Fiscal Year to Date	Total EDD2	Bland	Carroll	Grayson	Smyth	Wash.	Wythe	Bristol	Galax
Individuals Referred	735	10	86	33	139	134	98	161	74
Total Enrolled in VIEW ³	1,002	13	121	32	178	195	114	253	96
Participants in a Work Activity	898	12	105	29	157	175	102	235	83
% of Total Enrolled	90%	92%	87%	91%	88%	90%	89%	93%	86%
Participants Employed	477	6	65	15	65	107	54	124	41
% of Total Enrolled	48%	46%	54%	47%	37%	55%	47%	49%	43%
Average Wage ⁶	\$7.51	\$7.50	\$7.31	\$7.70	\$7.51	\$7.38	\$7.56	\$7.63	\$7.60
Average Monthly Earnings ⁷	\$991	\$1,000	\$943	\$1,124	\$996	\$987	\$981	\$959	\$1,144
Three Months Employment ⁸	64%	67%	75%	63%	60%	58%	69%	63%	68%

Work Activity of all enrolled in VIEW Since Program Implementation 1/1/96

Cumulative Data	Total EDD2	Bland	Carroll	Grayson	Smyth	Wash.	Wythe	Bristol	Galax
Individuals Referred	8,717	222	1,199	582	1,496	1,473	1,364	1,757	624
Total Enrolled in VIEW ^{3,5}	7,243	173	988	473	1,227	1,203	1,083	1,559	537
Participants in a Work Activity	6,913	161	892	437	1,175	1,169	1,058	1,513	508
% of Total Enrolled	95%	93%	90%	92%	96%	97%	98%	97%	95%
Participants Employed	4,831	109	660	310	754	812	731	1,110	345
% of Total Enrolled	67%	63%	67%	66%	61%	67%	67%	71%	64%
Average Wage ⁶	\$6.09	\$5.98	\$5.90	\$6.19	\$5.85	\$6.38	\$6.14	\$6.13	\$6.03
Average Monthly Earnings ⁷	\$832	\$822	\$799	\$828	\$804	\$873	\$819	\$845	\$854
Five Months Employment ⁹	52%	48%	46%	57%	53%	49%	56%	49%	60%

EDD3 – Roanoke Region: Status through December 31, 2009

TANF Cases as of the end of 12/31/09 and Work Activity as of 12/31/09

Current Data	Total EDD3	Alleghny/Covngton	Bote-tourt	Craig	Floyd	Franklin County	Giles	Mont-gomery	Pulaski	Roanoke County	Radford	Roanoke City
TANF Cases End of Month ¹⁰	2,818	133	46	7	41	253	51	379	214	333	72	1,289
Total Enrolled in VIEW ³	1155	110	16	4	15	85	20	177	57	151	39	481
Participants in a Work Activity	749	43	4	4	11	44	16	146	52	121	29	279
% of Enrolled	65%	39%	25%	100%	73%	52%	80%	82%	91%	80%	74%	58%
Participants Assigned to Inactive	8	1	0	0	0	0	0	4	0	3	0	0
Participants Employed	579	39	4	2	8	31	11	121	28	77	24	234
% of Enrolled	50%	35%	25%	50%	53%	36%	55%	68%	49%	51%	62%	49%
Full Time	468	19	3	2	8	26	9	107	27	63	15	189
Part Time	111	20	1	0	0	5	2	14	1	14	9	45
Average Wage ⁶	\$7.87	\$7.50	\$7.50	\$7.75	\$7.78	\$7.69	\$8.81	\$7.77	\$7.35	\$7.96	\$7.42	\$8.05
Average Monthly Earnings ⁷	\$1,054	\$836	\$874	\$1,175	\$1,183	\$1,068	\$1,184	\$1,038	\$1,014	\$1,063	\$942	\$1,103

Work Activity of all enrolled July 1, 2009 – December 31, 2009, Year to Date

State Fiscal Year to Date	Total EDD3	Alleghny/Covngton	Bote-tourt	Craig	Floyd	Franklin County	Giles	Mont-gomery	Pulaski	Roanoke County	Radford	Roanoke City
Individuals Referred	1,675	65	18	7	15	142	33	232	141	167	48	807
Total Enrolled in VIEW ³	2,156	138	23	11	33	159	51	321	176	243	75	926
Participants in a Work Activity	1,840	112	15	11	29	108	45	289	154	220	65	792
% of Total Enrolled	85%	81%	65%	100%	88%	68%	88%	90%	88%	91%	87%	86%
Participants Employed	1,099	64	6	7	19	59	28	211	74	151	47	433
% of Total Enrolled	51%	46%	26%	64%	58%	37%	55%	66%	42%	62%	63%	47%
Average Wage ⁶	\$7.96	\$7.83	\$7.58	\$7.97	\$7.56	\$7.81	\$8.32	\$7.85	\$7.57	\$8.11	\$7.85	\$8.06
Average Monthly Earnings ⁷	\$1,077	\$872	\$818	\$1,180	\$1,066	\$1,061	\$1,171	\$1,062	\$995	\$1,114	\$1,047	\$1,117
Three Months Employment ⁸	67%	68%	57%	100%	78%	69%	70%	74%	56%	63%	68%	65%

Work Activity of all enrolled in VIEW Since Program Implementation 10/1/97

Cumulative Data	Total EDD3	Alleghny/Covngton	Bote-tourt	Craig	Floyd	Franklin County	Giles	Mont-gomery	Pulaski	Roanoke County	Radford	Roanoke City
Individuals Referred	16,973	1,048	284	65	425	1,443	432	2,440	1,507	1,805	676	6,848
Total Enrolled in VIEW ^{3,5}	12,624	773	172	25	294	1,047	294	1,949	1,178	1,406	512	4,974
Participants in a Work Activity	12,081	741	154	25	287	938	286	1,923	1,136	1,337	498	4,756
% of Total Enrolled	96%	96%	90%	100%	98%	90%	97%	99%	96%	95%	97%	96%
Participants Employed	8,863	557	84	16	208	678	176	1,568	768	1,059	374	3,375
% of Total Enrolled	70%	72%	49%	64%	71%	65%	60%	80%	65%	75%	73%	68%
Average Wage ⁶	\$6.89	\$6.70	\$7.19	\$6.89	\$6.74	\$6.71	\$6.88	\$6.74	\$6.63	\$7.36	\$6.85	\$6.97
Average Monthly Earnings ⁷	\$933	\$813	\$915	\$1,042	\$910	\$930	\$938	\$916	\$925	\$1,022	\$894	\$947
Five Months Employment ⁹	50%	46%	42%	69%	46%	50%	48%	54%	45%	52%	46%	50%

EDD4 - Harrisonburg Region: Status through December 31, 2009

TANF Cases as of the end of 12/31/09 and Work Activity as of 12/31/09

Current Data	Total EDD4	Aug/S'ton/ W'boro	Bath	Highland	Rockbridge /BV/Lex	Rockingham /HBurg
TANF Cases End of Month ¹⁰	1,053	622	10	0	86	335
Total Enrolled in VIEW ³	478	268	4	0	36	170
Participants in a Work Activity	361	200	3	N/A	18	140
% of Enrolled	76%	75%	75%	N/A	50%	82%
Participants Assigned to Inactive	0	0	0	N/A	0	0
Participants Employed	264	156	1	N/A	18	89
% of Enrolled	55%	58%	25%	N/A	50%	52%
Full Time	222	137	0	N/A	11	74
Part Time	42	19	1	N/A	7	15
Average Wage ⁶	\$7.75	\$7.65	\$8.00	N/A	\$7.19	\$8.04
Average Monthly Earnings ⁷	\$1,033	\$1,010	\$797	N/A	\$852	\$1,113

Work Activity of all enrolled July 1, 2009 – December 31, 2009, Year to Date

State Fiscal Year to Date	Total EDD4	Aug/S'ton/ W'boro	Bath	Highland	Rockbridge /BV/Lex	Rockingham /HBurg
Individuals Referred	687	398	5	0	45	239
Total Enrolled in VIEW ³	794	479	6	0	50	259
Participants in a Work Activity	743	454	5	N/A	35	249
% of Total Enrolled	94%	95%	83%	N/A	70%	96%
Participants Employed	431	260	3	N/A	23	145
% of Total Enrolled	54%	54%	50%	N/A	46%	56%
Average Wage ⁶	\$7.77	\$7.69	\$7.27	N/A	\$7.18	\$8.01
Average Monthly Earnings ⁷	\$1,031	\$1,003	\$547	N/A	\$859	\$1,113
Three Months Employment ⁸	74%	82%	50%	N/A	66%	63%

Work Activity of all enrolled in VIEW Since Program Implementation 7/1/97

Cumulative Data	Total EDD4	Aug/S'ton/ W'boro	Bath	Highland	Rockbridge /BV/Lex	Rockingham /HBurg
Individuals Referred	6,616	3,579	65	16	592	2,364
Total Enrolled in VIEW ^{3, 5}	4,962	2,733	39	7	429	1,754
Participants in a Work Activity	4,823	2,678	37	7	402	1,699
% of Total Enrolled	97%	98%	95%	100%	94%	97%
Participants Employed	3,504	1,853	25	5	318	1,303
% of Total Enrolled	71%	68%	64%	71%	74%	74%
Average Wage ⁶	\$6.93	\$6.93	\$6.65	\$7.75	\$6.55	\$7.02
Average Monthly Earnings ⁷	\$927	\$938	\$706	\$694	\$847	\$937
Five Months Employment ⁹	56%	55%	54%	60%	55%	58%

EDDS 5 & 18 – Winchester/Eastern Shore Regions: Status through December 31, 2009

TANF Cases as of the end of 12/31/09 and Work Activity as of 12/31/09

Current Data	Total EDD5	Clarke	Frederick	Page	Shen.	Warren	Winchester	Total EDD18	Accomack	Nhampton
TANF Cases End of Month ¹⁰	525	10	167	77	30	111	130	296	198	98
Total Enrolled in VIEW ³	244	3	57	51	11	64	58	119	59	60
Participants in a Work Activity	171	3	37	33	9	39	50	49	20	29
% of Enrolled	70%	100%	65%	65%	82%	61%	86%	41%	34%	48%
Participants Assigned to Inactive	10	0	1	3	1	1	4	1	0	1
Participants Employed	112	1	28	20	7	24	32	35	19	16
% of Enrolled	46%	33%	49%	39%	5	38%	55%	29%	32%	27%
Full Time	85	1	22	14	5	22	21	25	15	10
Part Time	27	0	6	6	2	2	11	10	4	6
Average Wage ⁶	\$8.12	\$7.25	\$8.34	\$7.94	\$7.18	\$8.36	\$8.11	\$7.73	\$7.59	\$7.89
Average Monthly Earnings ⁷	\$1,044	\$942	\$1,164	\$978	\$845	\$1,188	\$918	\$994	\$1,045	\$932

Work Activity of all enrolled July 1, 2009 – December 31, 2009, Year to Date

State Fiscal Year to Date	Total EDD5	Clarke	Frederick	Page	Shen.	Warren	Winchester	Total EDD18	Accomack	Nhampton
Individuals Referred	344	10	89	72	18	83	72	170	113	57
Total Enrolled in VIEW ³	497	12	110	105	26	131	113	204	123	81
Participants in a Work Activity	414	12	97	86	22	100	97	164	100	64
% of Total Enrolled	83%	100%	88%	82%	85%	76%	86%	80%	81%	79%
Participants Employed	249	8	53	49	16	68	55	74	47	27
% of Total Enrolled	50%	67%	48%	47%	62%	52%	49%	36%	38%	33%
Average Wage ⁶	\$8.22	\$7.92	\$8.56	\$8.36	\$7.72	\$8.33	\$7.87	\$7.97	\$7.76	\$8.35
Average Monthly Earnings ⁷	\$1,068	\$1,055	\$1,092	\$1,106	\$930	\$1,160	\$954	\$1,052	\$1,035	\$1,081
Three Months Employment ⁸	59%	44%	75%	61%	50%	52%	53%	77%	71%	86%

Work Activity of all enrolled in VIEW Since Program Implementation 10/1/96

Cumulative Data	Total EDD5	Clarke	Frederick	Page	Shen.	Warren	Winchester	Total EDD18	Accomack	Nhampton
Individuals Referred	4,176	168	806	656	523	1037	986	2,126	1328	798
Total Enrolled in VIEW ^{3,5}	3,024	98	572	529	303	766	756	1,535	930	605
Participants in a Work Activity	2,891	93	542	511	296	722	727	1473	905	568
% of Total Enrolled	96%	95%	95%	97%	98%	94%	96%	96%	97%	94%
Participants Employed	2,062	60	353	381	203	537	528	879	502	377
% of Total Enrolled	68%	61%	62%	72%	67%	70%	70%	57%	54%	62%
Average Wage ⁶	\$7.10	\$7.20	\$7.34	\$7.17	\$6.50	\$7.16	\$7.04	\$6.43	\$6.50	\$6.35
Average Monthly Earnings ⁷	\$963	\$958	\$970	\$975	\$902	\$978	\$954	\$812	\$821	\$801
Five Months Employment ⁹	54%	47%	54%	56%	53%	56%	51%	62%	58%	66%

EDD6 – Northern Virginia Region: Status through December 31, 2009

TANF Cases as of the end of 12/31/09 and Work Activity as of 12/31/09

Current Data	Total EDD6	Arlington	Fairfax	Loudoun	Prince William	Alexandria	Manassas	Manassas Park
TANF Cases End of Month ¹⁰	4,144	299	1,488	271	1,319	513	199	55
Total Enrolled in VIEW ³	1,739	103	550	161	625	222	58	20
Participants in a Work Activity	1,330	90	474	91	442	177	37	19
% of Enrolled	76%	87%	86%	57%	71%	80%	64%	95%
Participants Assigned to Inactive	22	0	11	0	10	0	1	0
Participants Employed	769	42	247	75	267	98	23	17
% of Enrolled	44%	41%	45%	47%	43%	44%	40%	85%
Full Time	597	28	201	45	207	80	19	17
Part Time	172	14	46	30	60	18	4	0
Average Wage ⁶	\$9.20	\$9.07	\$9.47	\$9.84	\$8.89	\$9.37	\$8.02	\$8.32
Average Monthly Earnings ⁷	\$1,227	\$1,234	\$1,271	\$1,218	\$1,187	\$1,287	\$1,015	\$1,164

Work Activity of all enrolled July 1, 2009 – December 31, 2009, Year to Date

State Fiscal Year to Date	Total EDD6	Arlington	Fairfax	Loudoun	Prince William	Alexandria	Manassas	Manassas Park
Individuals Referred	2,145	132	686	165	786	245	91	40
Total Enrolled in VIEW ³	2,935	197	957	250	1,042	335	118	36
Participants in a Work Activity	2,603	183	872	204	909	307	92	36
% of Total Enrolled	89%	93%	91%	82%	87%	92%	78%	100%
Participants Employed	1,418	87	438	137	516	160	55	25
% of Total Enrolled	48%	44%	46%	55%	50%	48%	47%	69%
Average Wage ⁶	\$9.69	\$9.63	\$10.07	\$10.11	\$9.42	\$9.67	\$8.88	\$8.33
Average Monthly Earnings ⁷	\$1,295	\$1,269	\$1,322	\$1,270	\$1,292	\$1,335	\$1,161	\$1,180
Three Months Employment ⁸	76%	76%	76%	75%	75%	78%	81%	74%

Work Activity of all enrolled in VIEW Since Program Implementation 4/1/96

Cumulative Data	Total EDD6	Arlington	Fairfax	Loudoun	Prince William	Alexandria	Manassas	Manassas Park
Individuals Referred	28,632	2,541	9,991	1,974	9,137	3,395	1,222	372
Total Enrolled in VIEW ^{3,5}	21,840	1,954	7,419	1,558	7,043	2,674	913	279
Participants in a Work Activity	21,121	1,932	7,185	1,489	6,795	2,562	881	277
% of Total Enrolled	97%	99%	97%	96%	96%	96%	96%	99%
Participants Employed	15,743	1,442	5,110	1,239	5,223	1,904	615	210
% of Total Enrolled	72%	74%	69%	80%	74%	71%	67%	75%
Average Wage ⁶	\$8.42	\$7.94	\$8.36	\$8.92	\$8.62	\$8.12	\$7.97	\$8.01
Average Monthly Earnings ⁷	\$1,127	\$1,035	\$1,111	\$1,160	\$1,188	\$1,040	\$1,078	\$1,066
Five Months Employment ⁹	63%	64%	62%	65%	62%	70%	59%	68%

EDD7 - Culpeper Region: Status through December 31, 2009

TANF Cases as of the end of 12/31/09 and Work Activity as of 12/31/09

Current Data	Total EDD7	Culpeper	Fauquier	Madison	Orange	Rapp.
TANF Cases End of Month ¹⁰	469	214	125	30	96	4
Total Enrolled in VIEW ³	173	67	47	9	49	1
Participants in a Work Activity	106	39	32	6	28	1
% of Enrolled	61%	58%	68%	67%	57%	100%
Participants Assigned to Inactive	6	0	3	0	3	0
Participants Employed	82	34	22	5	20	1
% of Enrolled	47%	51%	47%	56%	41%	100%
Full Time	69	26	20	5	17	1
Part Time	13	8	2	0	3	0
Average Wage ⁶	\$8.27	\$8.35	\$8.54	\$8.70	\$7.68	\$9.00
Average Monthly Earnings ⁷	\$1,107	\$1,034	\$1,189	\$1,394	\$1,045	\$1,559

Work Activity of all enrolled July 1, 2009 – December 31, 2009, Year to Date

State Fiscal Year to Date	Total EDD7	Culpeper	Fauquier	Madison	Orange	Rapp.
Individuals Referred	250	98	81	20	49	2
Total Enrolled in VIEW ³	308	118	94	24	67	5
Participants in a Work Activity	270	99	90	23	54	4
% of Total Enrolled	88%	84%	96%	96%	81%	80%
Participants Employed	161	59	52	12	34	4
% of Total Enrolled	52%	50%	55%	50%	51%	80%
Average Wage ⁶	\$8.30	\$8.70	\$8.41	\$8.18	\$7.52	\$8.19
Average Monthly Earnings ⁷	\$1,100	\$1,110	\$1,136	\$1,267	\$949	\$1,184
Three Months Employment ⁸	73%	77%	69%	83%	73%	67%

Work Activity of all enrolled in VIEW Since Program Implementation 7/1/95

Cumulative Data	Total EDD7	Culpeper	Fauquier	Madison	Orange	Rapp.
Individuals Referred	3,288	1,258	954	311	678	87
Total Enrolled in VIEW ^{3,5}	2,459	905	730	229	538	57
Participants in a Work Activity	2,371	868	724	221	504	54
% of Total Enrolled	96%	96%	99%	97%	94%	95%
Participants Employed	1,674	588	507	152	389	38
% of Total Enrolled	68%	65%	69%	66%	72%	67%
Average Wage ⁶	\$7.24	\$7.22	\$7.57	\$7.03	\$6.94	\$7.22
Average Monthly Earnings ⁷	\$963	\$948	\$990	\$987	\$941	\$958
Five Months Employment ⁹	54%	56%	62%	46%	44%	52%

EDD8 - Charlottesville Region: Status through December 31, 2009

TANF Cases as of the end of 12/31/09 and Work Activity as of 12/31/09

Current Data	Total EDD8	Albemarle	Fluvanna	Greene	Louisa	Nelson	CVille
TANF Cases End of Month ¹⁰	762	151	46	49	111	41	364
Total Enrolled in VIEW ³	319	41	8	23	46	9	192
Participants in a Work Activity	257	34	5	14	35	7	162
% of Enrolled	81%	83%	63%	61%	76%	78%	84%
Participants Assigned to Inactive	2	0	0	0	0	0	2
Participants Employed	148	24	5	11	21	6	81
% of Enrolled	46%	59%	63%	48%	46%	67%	42%
Full Time	102	19	5	7	14	3	54
Part Time	46	5	0	4	7	3	27
Average Wage ⁶	\$8.43	\$8.94	\$7.76	\$7.79	\$8.58	\$8.29	\$8.38
Average Monthly Earnings ⁷	\$1,021	\$1,137	\$1,102	\$974	\$953	\$1,147	\$997

Work Activity of all enrolled July 1, 2009 – December 31, 2009, Year to Date

State Fiscal Year to Date	Total EDD8	Albemarle	Fluvanna	Greene	Louisa	Nelson	CVille
Individuals Referred	468	113	11	30	79	21	214
Total Enrolled in VIEW ³	583	106	9	47	95	34	292
Participants in a Work Activity	541	95	5	39	88	30	284
% of Total Enrolled	93%	90%	56%	83%	93%	88%	97%
Participants Employed	287	52	5	26	45	21	138
% of Total Enrolled	49%	49%	56%	55%	47%	62%	47%
Average Wage ⁶	\$8.32	\$8.70	\$7.76	\$7.83	\$8.07	\$7.80	\$8.45
Average Monthly Earnings ⁷	\$970	\$1,125	\$1,094	\$864	\$938	\$931	\$944
Three Months Employment ⁸	68%	77%	100%	68%	62%	59%	65%

Work Activity of all enrolled in VIEW Since Program Implementation 7/1/97

Cumulative Data	Total EDD8	Albemarle	Fluvanna	Greene	Louisa	Nelson	CVille
Individuals Referred	4,979	1160	178	385	751	236	2,269
Total Enrolled in VIEW ^{3,5}	3,760	811	114	274	526	160	1,875
Participants in a Work Activity	3,662	791	108	256	503	159	1,845
% of Total Enrolled	97%	98%	95%	93%	96%	99%	98%
Participants Employed	2,864	603	85	209	330	110	1,527
% of Total Enrolled	76%	74%	75%	76%	63%	69%	81%
Average Wage ⁶	\$7.21	\$7.64	\$7.35	\$7.15	\$7.22	\$7.50	\$7.09
Average Monthly Earnings ⁷	\$937	\$994	\$1,082	\$908	\$952	\$993	\$917
Five Months Employment ⁹	55%	55%	55%	49%	55%	54%	56%

EDD9 - Lynchburg Region: Status through December 31, 2009

TANF Cases as of the end of 12/31/09 and Work Activity as of 12/31/09

Current Data	Total EDD9	Amherst	Appom.	Bedford	Campbell	Lynchburg
TANF Cases End of Month ¹⁰	1,349	95	100	217	291	646
Total Enrolled in VIEW ³	656	41	51	105	196	263
Participants in a Work Activity	452	24	46	73	125	184
% of Enrolled	69%	59%	90%	70%	64%	70%
Participants Assigned to Inactive	4	2	0	2	0	0
Participants Employed	339	23	36	53	85	142
% of Enrolled	52%	56%	71%	50%	43%	54%
Full Time	267	22	36	43	55	111
Part Time	72	1	0	10	30	31
Average Wage ⁶	\$7.68	\$7.72	\$7.45	\$7.67	\$7.90	\$7.61
Average Monthly Earnings ⁷	\$1,039	\$1,052	\$1,156	\$1,032	\$1,024	\$1,019

Work Activity of all enrolled July 1, 2009 – December 31, 2009, Year to Date

State Fiscal Year to Date	Total EDD9	Amherst	Appom.	Bedford	Campbell	Lynchburg
Individuals Referred	760	69	67	143	143	338
Total Enrolled in VIEW ³	1,103	75	78	196	290	464
Participants in a Work Activity	982	62	77	169	256	418
% of Total Enrolled	89%	83%	99%	86%	88%	90%
Participants Employed	591	38	48	105	153	247
% of Total Enrolled	54%	51%	62%	54%	53%	53%
Average Wage ⁶	\$7.79	\$7.72	\$7.50	\$7.87	\$8.00	\$7.69
Average Monthly Earnings ⁷	\$1,029	\$1,025	\$1,158	\$1,021	\$1,045	\$998
Three Months Employment ⁸	67%	65%	75%	65%	66%	68%

Work Activity of all enrolled in VIEW Since Program Implementation 10/1/95

Cumulative Data	Total EDD9	Amherst	Appom.	Bedford	Campbell	Lynchburg
Individuals Referred	8,643	799	709	1,726	2,004	3,405
Total Enrolled in VIEW ^{3,5}	7,063	635	615	1,364	1,677	2,772
Participants in a Work Activity	6,684	602	603	1,279	1,573	2,627
% of Total Enrolled	95%	95%	98%	94%	94%	95%
Participants Employed	4,964	431	440	914	1,161	2,018
% of Total Enrolled	70%	68%	72%	67%	69%	73%
Average Wage ⁶	\$6.34	\$6.53	\$6.10	\$6.38	\$6.53	\$6.25
Average Monthly Earnings ⁷	\$830	\$835	\$839	\$827	\$868	\$808
Five Months Employment ⁹	58%	52%	44%	55%	60%	62%

EDD10 - Danville Region: Status through December 31, 2009

TANF Cases as of the end of 12/31/09 and Work Activity as of 12/31/09

Current Data	Total EDD10	Halifax	Henry/ Martinsville	Patrick	Pittsylvania	Danville
TANF Cases End of Month ¹⁰	1,767	255	597	116	239	560
Total Enrolled in VIEW ³	624	82	263	82	45	152
Participants in a Work Activity	423	39	185	63	33	103
% of Enrolled	68%	48%	70%	77%	73%	68%
Participants Assigned to Inactive	2	0	0	2	0	0
Participants Employed	275	26	124	38	24	63
% of Enrolled	44%	32%	47%	46%	53%	41%
Full Time	228	23	102	30	23	50
Part Time	47	3	22	8	1	13
Average Wage ⁶	\$7.62	\$8.36	\$7.58	\$7.24	\$7.61	\$7.64
Average Monthly Earnings ⁷	\$1,029	\$1,216	\$1,025	\$980	\$1,021	\$992

Work Activity of all enrolled July 1, 2009 – December 31, 2009, Year to Date

State Fiscal Year to Date	Total EDD10	Halifax	Henry/ Martinsville	Patrick	Pittsylvania	Danville
Individuals Referred	996	125	326	96	135	314
Total Enrolled in VIEW ³	1,216	156	448	124	115	373
Participants in a Work Activity	1,061	118	385	109	107	342
% of Total Enrolled	87%	76%	86%	88%	93%	92%
Participants Employed	502	53	212	66	45	126
% of Total Enrolled	41%	34%	47%	53%	39%	34%
Average Wage ⁶	\$7.62	\$7.80	\$7.64	\$7.29	\$7.63	\$7.68
Average Monthly Earnings ⁷	\$1,003	\$969	\$1,044	\$977	\$974	\$965
Three Months Employment ⁸	64%	76%	62%	67%	65%	59%

Work Activity of all enrolled in VIEW Since Program Implementation 7/1/96

Cumulative Data	Total EDD10	Halifax	Henry/ Martinsville	Patrick	Pittsylvania	Danville
Individuals Referred	11,007	1,698	2,921	1,091	1,765	3,532
Total Enrolled in VIEW ^{3,5}	8,738	1,403	2,150	942	1,343	2,900
Participants in a Work Activity	8,421	1,342	2,050	884	1,324	2,821
% of Total Enrolled	96%	96%	95%	94%	99%	97%
Participants Employed	5,563	826	1,396	630	761	1,950
% of Total Enrolled	64%	59%	65%	67%	57%	67%
Average Wage ⁶	\$6.20	\$6.17	\$6.55	\$6.06	\$6.20	\$6.03
Average Monthly Earnings ⁷	\$832	\$820	\$919	\$794	\$848	\$788
Five Months Employment ⁹	54%	48%	54%	66%	51%	53%

EDD11 - Southside Region: Status through December 31, 2009

TANF Cases as of the end of 12/31/09 and Work Activity as of 12/31/09

Current Data	Total EDD11	Amelia	Brunswick	Buckingham	Charlotte	Cumberland	Gr'nsville Emporia	Lunenburg	Mecklenburg	Notto-way	Pr. Edward
TANF Cases End of Month ¹⁰	1,121	76	133	84	79	63	147	54	199	139	147
Total Enrolled in VIEW ³	556	32	52	48	33	42	69	37	86	74	83
Participants in a Work Activity	375	30	29	37	30	25	57	16	61	39	51
% of Enrolled	67%	94%	56%	77%	91%	60%	83%	43%	71%	53%	61%
Participants Assigned to Inactive	3	0	0	0	0	2	0	0	1	0	0
Participants Employed	243	18	27	26	18	18	20	12	33	34	37
% of Enrolled	44%	56%	52%	54%	55%	43%	29%	32%	38%	46%	45%
Full Time	169	11	14	24	13	14	9	6	18	31	29
Part Time	74	7	13	2	5	4	11	6	15	3	8
Average Wage ⁶	\$7.62	\$8.10	\$7.50	\$7.82	\$7.62	\$8.12	\$7.31	\$7.02	\$7.64	\$7.34	\$7.68
Average Monthly Earnings ⁷	\$946	\$925	\$869	\$1,123	\$1,004	\$1,008	\$882	\$727	\$875	\$939	\$1,004

Work Activity of all enrolled July 1, 2009 – December 31, 2009, Year to Date

State Fiscal Year to Date	Total EDD11	Amelia	Brunswick	Buckingham	Charlotte	Cumberland	Gr'nsville Emporia	Lunenburg	Mecklenburg	Notto-way	Pr. Edward
Individuals Referred	581	34	81	45	53	28	68	28	98	66	80
Total Enrolled in VIEW ³	900	52	89	75	75	53	123	45	142	118	128
Participants in a Work Activity	771	48	80	71	70	48	106	35	123	73	117
% of Total Enrolled	86%	92%	90%	95%	93%	91%	86%	78%	87%	62%	91%
Participants Employed	385	28	39	36	30	26	43	14	58	46	65
% of Total Enrolled	43%	54%	44%	48%	40%	49%	35%	31%	41%	39%	51%
Average Wage ⁶	\$7.60	\$8.05	\$7.16	\$8.09	\$7.89	\$8.14	\$7.41	\$7.00	\$7.50	\$7.56	\$7.48
Average Monthly Earnings ⁷	\$936	\$1,022	\$866	\$1,055	\$1,007	\$1,027	\$827	\$724	\$934	\$964	\$908
Three Months Employment ⁸	74%	79%	71%	85%	70%	90%	50%	100%	69%	81%	75%

Work Activity of all enrolled in VIEW Since Program Implementation 10/1/97

Cumulative Data	Total EDD11	Amelia	Brunswick	Buckingham	Charlotte	Cumberland	Gr'nsville Emporia	Lunenburg	Mecklenburg	Notto-way	Pr. Edward
Individuals Referred	6,566	388	863	662	559	448	786	265	950	788	857
Total Enrolled in VIEW ^{3,5}	4,938	278	671	490	387	317	604	195	729	588	679
Participants in a Work Activity	4,707	259	667	456	359	302	575	193	686	546	664
% of Total Enrolled	95%	93%	99%	93%	93%	95%	95%	99%	94%	93%	98%
Participants Employed	3,049	170	386	281	203	182	346	91	491	401	498
% of Total Enrolled	62%	61%	58%	57%	52%	57%	57%	47%	67%	68%	73%
Average Wage ⁶	\$6.48	\$7.13	\$6.02	\$6.88	\$6.91	\$7.01	\$6.43	\$5.68	\$6.19	\$6.48	\$6.50
Average Monthly Earnings ⁷	\$852	\$938	\$808	\$922	\$899	\$937	\$800	\$728	\$807	\$869	\$853
Five Months Employment ⁹	55%	46%	57%	53%	47%	47%	56%	61%	58%	55%	60%

EDD12 - Richmond Region: Status through December 31, 2009

TANF Cases as of the end of 12/31/09 and Work Activity as of 12/31/09

Current Data	Total EDD12	Chesterfield/ Col Hghts	Goochland	Hanover	Henrico	Powhatan	Richmond City
TANF Cases End of Month ¹⁰	5,855	1043	46	184	1,633	42	2,907
Total Enrolled in VIEW ³	2,477	410	17	121	721	12	1,196
Participants in a Work Activity	1,654	279	7	53	486	9	820
% of Enrolled	67%	68%	41%	44%	67%	75%	69%
Participants Assigned to Inactive	18	1	0	3	7	0	7
Participants Employed	928	191	6	40	296	5	390
% of Enrolled	37%	47%	35%	33%	41%	42%	33%
Full Time	726	143	4	31	235	3	310
Part Time	202	48	2	9	61	2	80
Average Wage ⁶	\$8.11	\$8.15	\$8.02	\$8.50	\$8.15	\$6.81	\$8.04
Average Monthly Earnings ⁷	\$1,087	\$1,066	\$1,021	\$1,077	\$1,102	\$704	\$1,093

Work Activity of all enrolled July 1, 2009 – December 31, 2009, Year to Date

State Fiscal Year to Date	Total EDD12	Chesterfield/ Col Hghts	Goochland	Hanover	Henrico	Powhatan	Richmond City
Individuals Referred	2,696	517	19	102	757	11	1,290
Total Enrolled in VIEW ³	3,892	686	23	161	1,093	27	1,902
Participants in a Work Activity	3,380	622	14	114	955	27	1,648
% of Total Enrolled	87%	91%	61%	71%	87%	100%	87%
Participants Employed	1,649	327	8	64	502	16	732
% of Total Enrolled	42%	48%	35%	40%	46%	59%	38%
Average Wage ⁶	\$8.28	\$8.25	\$7.83	\$9.24	\$8.44	\$9.02	\$8.08
Average Monthly Earnings ⁷	\$1,110	\$1,089	\$956	\$1,217	\$1,131	\$1,013	\$1,099
Three Months Employment ⁸	75%	81%	83%	83%	81%	82%	69%

Work Activity of all enrolled in VIEW Since Program Implementation 4/1/97

Cumulative Data	Total EDD12	Chesterfield/ Col Hghts	Goochland	Hanover	Henrico	Powhatan	Richmond City
Individuals Referred	30,647	6,065	206	1000	7,228	268	15,880
Total Enrolled in VIEW ^{3,5}	23,526	4,523	145	702	5,701	184	12,271
Participants in a Work Activity	22,694	4,412	135	636	5,411	175	11,925
% of Total Enrolled	96%	98%	93%	91%	95%	95%	97%
Participants Employed	16,342	3,006	96	443	3,900	112	8,785
% of Total Enrolled	69%	66%	66%	63%	68%	61%	72%
Average Wage ⁶	\$7.16	\$7.38	\$6.61	\$8.06	\$7.43	\$7.20	\$6.95
Average Monthly Earnings ⁷	\$972	\$998	\$860	\$1,061	\$1,009	\$905	\$948
Five Months Employment ⁹	60%	61%	55%	65%	56%	54%	60%

EDD13 - Fredericksburg Region: Status through December 31, 2009

TANF Cases as of the end of 12/31/09 and Work Activity as of 12/31/09

Current Data	Total EDD13	Caroline	King George	Spotsylvania	Stafford	Fredericksburg
TANF Cases End of Month ¹⁰	1,129	183	43	402	309	192
Total Enrolled in VIEW ³	621	113	8	230	164	106
Participants in a Work Activity	401	68	6	154	101	72
% of Enrolled	65%	60%	75%	67%	62%	68%
Participants Assigned to Inactive	22	15	2	4	0	1
Participants Employed	295	47	5	109	70	64
% of Enrolled	48%	42%	63%	47%	43%	60%
Full Time	238	38	5	90	60	45
Part Time	57	9	0	19	10	19
Average Wage ⁶	\$8.22	\$7.83	\$9.35	\$8.29	\$8.25	\$8.26
Average Monthly Earnings ⁷	\$1,068	\$1,004	\$1,222	\$1,090	\$1,050	\$1,085

Work Activity of all enrolled July 1, 2009 – December 31, 2009, Year to Date

State Fiscal Year to Date	Total EDD13	Caroline	King George	Spotsylvania	Stafford	Fredericksburg
Individuals Referred	655	123	35	217	157	123
Total Enrolled in VIEW ³	972	169	27	323	251	202
Participants in a Work Activity	842	143	24	272	225	178
% of Total Enrolled	87%	85%	89%	84%	90%	88%
Participants Employed	513	86	10	182	110	125
% of Total Enrolled	53%	51%	37%	56%	44%	62%
Average Wage ⁶	\$8.33	\$7.93	\$8.43	\$8.38	\$8.54	\$8.29
Average Monthly Earnings ⁷	\$1,070	\$1,037	\$1,137	\$1,072	\$1,093	\$1,060
Three Months Employment ⁸	77%	87%	69%	75%	75%	77%

Work Activity of all enrolled in VIEW Since Program Implementation 7/1/97

Cumulative Data	Total EDD13	Caroline	King George	Spotsylvania	Stafford	Fredericksburg
Individuals Referred	6,518	1,038	412	1,867	1,906	1,295
Total Enrolled in VIEW ^{3,5}	4,587	708	265	1,431	1,120	1,063
Participants in a Work Activity	4,383	683	253	1,315	1,096	1,036
% of Total Enrolled	96%	96%	95%	92%	98%	97%
Participants Employed	3,147	443	181	1,008	682	833
% of Total Enrolled	69%	63%	68%	70%	61%	78%
Average Wage ⁶	\$7.65	\$7.32	\$7.19	\$7.74	\$8.14	\$7.53
Average Monthly Earnings ⁷	\$1,007	\$945	\$912	\$1,020	\$1,114	\$979
Five Months Employment ⁹	54%	43%	49%	57%	58%	54%

EDD14 – Northern Neck Region: Status through December 31, 2009

TANF Cases as of the end of 12/31/09 and Work Activity as of 12/31/09

Current Data	Total EDD14	Essex	King & Queen	King William	Lancaster	Mathews	Middlesex	North-umberland	Richmond County	West-moreland
TANF Cases End of Month ¹⁰	445	101	27	52	44	21	41	32	43	84
Total Enrolled in VIEW ³	191	58	5	27	14	13	24	8	11	31
Participants in a Work Activity	149	49	4	26	11	10	14	4	9	22
% of Enrolled	78%	84%	80%	96%	79%	77%	58%	50%	82%	71%
Participants Assigned to Inactive	3	1	0	0	0	0	0	0	0	2
Participants Employed	102	30	2	15	9	8	12	3	5	18
% of Enrolled	53%	52%	40%	56%	64%	62%	50%	38%	45%	58%
Full Time	78	16	1	11	8	8	10	3	4	17
Part Time	24	14	1	4	1	0	2	0	1	1
Average Wage ⁶	\$7.69	\$7.50	\$8.84	\$8.24	\$8.44	\$8.30	\$6.30	\$7.50	\$7.49	\$7.77
Average Monthly Earnings ⁷	\$1,013	\$920	\$1,121	\$1,060	\$1,177	\$1,259	\$841	\$1,029	\$910	\$1,063

Work Activity of all enrolled July 1, 2009 – December 31, 2009, Year to Date

State Fiscal Year to Date	Total EDD14	Essex	King & Queen	King William	Lancaster	Mathews	Middlesex	North-umberland	Richmond County	West-moreland
Individuals Referred	239	54	16	30	19	9	33	11	25	42
Total Enrolled in VIEW ³	341	82	21	43	24	13	43	15	25	75
Participants in a Work Activity	297	74	20	41	20	11	31	14	24	62
% of Total Enrolled	87%	90%	95%	95%	83%	85%	72%	93%	96%	83%
Participants Employed	177	44	6	24	14	8	19	8	12	42
% of Total Enrolled	52%	54%	29%	56%	58%	62%	44%	53%	48%	56%
Average Wage ⁶	\$7.86	\$7.60	\$7.96	\$8.28	\$8.05	\$8.30	\$7.18	\$8.68	\$7.54	\$7.92
Average Monthly Earnings ⁷	\$1,004	\$965	\$1,116	\$992	\$1,045	\$1,225	\$931	\$997	\$855	\$1,059
Three Months Employment ⁸	74%	70%	80%	65%	73%	100%	94%	56%	43%	75%

Work Activity of all enrolled in VIEW Since Program Implementation 7/1/97

Cumulative Data	Total EDD14	Essex	King & Queen	King William	Lancaster	Mathews	Middlesex	North-umberland	Richmond County	West-moreland
Individuals Referred	2,971	449	225	243	350	164	337	265	282	656
Total Enrolled in VIEW ^{3,5}	2,134	342	150	197	264	103	241	213	153	471
Participants in a Work Activity	2,011	328	142	191	246	95	217	206	148	438
% of Total Enrolled	94%	96%	95%	97%	93%	92%	90%	97%	97%	93%
Participants Employed	1,384	239	80	120	178	65	162	129	100	311
% of Total Enrolled	65%	70%	53%	61%	67%	63%	67%	61%	65%	66%
Average Wage ⁶	\$6.74	\$6.72	\$6.94	\$7.21	\$6.51	\$6.68	\$6.70	\$6.44	\$6.78	\$6.80
Average Monthly Earnings ⁷	\$872	\$837	\$879	\$974	\$829	\$862	\$863	\$840	\$917	\$897
Five Months Employment ⁹	46%	41%	36%	45%	49%	53%	57%	41%	33%	50%

EDD15 - Peninsula Region: Status through December 31, 2009

TANF Cases as of the end of 12/31/09 and Work Activity as of 12/31/09

Current Data	Total EDD15	Charles City	Gloucester	James City	NewKent	York/Poq	Hampton	Newport News	Willmsburg
TANF Cases End of Month ¹⁰	3,473	21	125	139	40	110	1,266	1,736	36
Total Enrolled in VIEW ³	1,454	6	45	56	17	62	515	735	18
Participants in a Work Activity	1,041	3	26	38	5	43	377	537	12
% of Enrolled	72%	50%	58%	68%	29%	69%	73%	73%	67%
Participants Assigned to Inactive	6	0	0	0	0	0	3	3	0
Participants Employed	774	2	21	36	5	37	274	390	9
% of Enrolled	53%	33%	47%	64%	29%	60%	53%	53%	50%
Full Time	634	2	15	25	4	28	212	340	8
Part Time	140	0	6	11	1	9	62	50	1
Average Wage ⁶	\$7.88	\$7.25	\$7.69	\$7.87	\$8.38	\$7.70	\$7.87	\$7.91	\$7.78
Average Monthly Earnings ⁷	\$1,063	\$942	\$887	\$1,012	\$1,002	\$1,005	\$1,036	\$1,101	\$1,144

Work Activity of all enrolled July 1, 2009 – December 31, 2009, Year to Date

State Fiscal Year to Date	Total EDD15	Charles City	Gloucester	James City	New Kent	York/Poq	Hampton	Newport News	Willmsburg
Individuals Referred	1,730	7	70	73	23	60	567	898	32
Total Enrolled in VIEW ³	2,485	10	91	100	27	96	819	1,303	39
Participants in a Work Activity	2,171	6	66	86	26	86	745	1,124	32
% of Total Enrolled	87%	60%	73%	86%	96%	90%	91%	86%	82%
Participants Employed	1,336	5	43	65	10	58	458	675	22
% of Total Enrolled	54%	50%	47%	65%	37%	60%	56%	52%	56%
Average Wage ⁶	\$7.95	\$6.13	\$7.92	\$7.95	\$8.82	\$7.67	\$8.08	\$7.91	\$7.57
Average Monthly Earnings ⁷	\$1,057	\$773	\$928	\$985	\$996	\$985	\$1,062	\$1,079	\$1,024
Three Months Employment ⁸	73%	25%	64%	69%	88%	78%	75%	73%	63%

Work Activity of all enrolled in VIEW Since Program Implementation 10/1/97

Cumulative Data	Total EDD15	Charles City	Gloucester	James City	New Kent	York/Poq	Hampton	Newport News	Willmsburg
Individuals Referred	21,696	129	903	857	253	838	7,631	10,783	302
Total Enrolled in VIEW ^{3,5}	15,823	88	623	649	184	597	5,449	8,017	216
Participants in a Work Activity	15,128	85	567	604	177	576	5,322	7,593	204
% of Total Enrolled	96%	97%	91%	93%	96%	96%	98%	95%	94%
Participants Employed	11,442	47	419	472	117	387	3,925	5,917	158
% of Total Enrolled	72%	53%	67%	73%	64%	65%	72%	74%	73%
Average Wage ⁶	\$6.79	\$6.70	\$6.63	\$7.12	\$7.38	\$6.86	\$6.80	\$6.76	\$7.04
Average Monthly Earnings ⁷	\$898	\$871	\$833	\$872	\$1,002	\$869	\$895	\$906	\$890
Five Months Employment ⁹	56%	59%	56%	51%	52%	46%	53%	58%	52%

EDD16 - Petersburg Region: Status through December 31, 2009

TANF Cases as of the end of 12/31/09 and Work Activity as of 12/31/09

Current Data	Total EDD16	Dinwiddie	Prince George	Surry	Sussex	Hopewell	Petersburg
TANF Cases End of Month ¹⁰	1,400	129	91	68	68	372	672
Total Enrolled in VIEW ³	695	19	34	33	42	219	348
Participants in a Work Activity	403	17	20	26	29	108	203
% of Enrolled	58%	89%	59%	79%	69%	49%	58%
Participants Assigned to Inactive	11	0	4	2	0	2	3
Participants Employed	281	12	14	13	16	71	155
% of Enrolled	40%	63%	41%	39%	38%	32%	45%
Full Time	230	11	12	7	10	50	140
Part Time	51	1	2	6	6	21	15
Average Wage ⁶	\$7.77	\$8.56	\$7.52	\$7.84	\$7.66	\$7.50	\$7.86
Average Monthly Earnings ⁷	\$1,038	\$1,325	\$971	\$946	\$930	\$913	\$1,098

Work Activity of all enrolled July 1, 2009 – December 31, 2009, Year to Date

State Fiscal Year to Date	Total EDD16	Dinwiddie	Prince George	Surry	Sussex	Hopewell	Petersburg
Individuals Referred	621	76	46	28	46	162	263
Total Enrolled in VIEW	1,054	61	71	49	76	282	515
Participants in a Work Activity	846	58	58	48	71	204	407
% of Total Enrolled	80%	95%	82%	98%	93%	72%	79%
Participants Employed	480	32	32	25	35	115	241
% of Total Enrolled	46%	52%	45%	51%	46%	41%	47%
Average Wage ⁶	\$7.91	\$8.11	\$7.97	\$8.03	\$7.48	\$7.51	\$8.11
Average Monthly Earnings ⁷	\$1,061	\$1,193	\$1,057	\$969	\$947	\$951	\$1,121
Three Months Employment ⁸	72%	59%	55%	59%	67%	70%	80%

Work Activity of all enrolled in VIEW Since Program Implementation 1/1/97

Cumulative Data	Total EDD16	Dinwiddie	Prince George	Surry	Sussex	Hopewell	Petersburg
Individuals Referred	7,841	997	674	293	635	1,962	3,280
Total Enrolled in VIEW ^{3,5}	6,045	696	496	230	498	1,556	2,569
Participants in a Work Activity	5,762	693	435	218	483	1,489	2,444
% of Total Enrolled	95%	100%	88%	95%	97%	96%	95%
Participants Employed	4,212	474	311	164	336	1,086	1,841
% of Total Enrolled	70%	68%	63%	71%	67%	70%	72%
Average Wage ⁶	\$6.80	\$6.78	\$7.26	\$6.89	\$6.78	\$6.67	\$6.81
Average Monthly Earnings ⁷	\$927	\$940	\$981	\$855	\$933	\$905	\$934
Five Months Employment ⁹	55%	53%	50%	50%	57%	51%	58%

EDD17 - Tidewater Region: Status through December 31, 2009

TANF Cases as of the end of 12/31/09 and Work Activity as of 12/31/09

Current Data	Total EDD17	Isle of Wight	South - ampton	Chesa- peake	Franklin City	Norfolk	Portsmouth	Suffolk	VA Beach
TANF Cases End of Month ¹⁰	6,739	144	125	1,264	97	2,201	1,309	456	1,143
Total Enrolled in VIEW ³	2,770	54	42	598	19	995	484	165	413
Participants in a Work Activity	2,109	36	20	451	11	781	376	124	310
% of Enrolled	76%	67%	48%	75%	58%	78%	78%	75%	75%
Participants Assigned to Inactive	22	3	4	1	0	5	8	1	0
Participants Employed	1,501	29	15	365	8	529	243	98	214
% of Enrolled	54%	54%	36%	61%	42%	53%	50%	59%	52%
Full Time	1,275	26	8	317	6	463	184	86	185
Part Time	226	3	7	48	2	66	59	12	29
Average Wage ⁶	\$7.77	\$7.75	\$8.49	\$7.77	\$7.72	\$7.61	\$7.77	\$7.95	\$8.06
Average Monthly Earnings ⁷	\$1,046	\$1,068	\$996	\$1,062	\$1,058	\$1,022	\$1,017	\$1,102	\$1,089

Work Activity of all enrolled July 1, 2009 – December 31, 2009, Year to Date

State Fiscal Year to Date	Total EDD17	Isle of Wight	South - ampton	Chesa- peake	Franklin City	Norfolk	Portsmouth	Suffolk	VA Beach
Individuals Referred	3,156	72	57	494	66	1,033	568	202	664
Total Enrolled in VIEW ³	4,532	98	80	873	61	1,518	841	294	767
Participants in a Work Activity	3,958	91	76	790	53	1,325	729	253	641
% of Total Enrolled	87%	93%	95%	90%	87%	87%	87%	86%	84%
Participants Employed	2,545	61	32	550	25	889	444	165	379
% of Total Enrolled	56%	62%	40%	63%	41%	59%	53%	56%	49%
Average Wage ⁶	\$7.82	\$7.81	\$8.31	\$7.78	\$8.25	\$7.57	\$7.91	\$8.01	\$8.25
Average Monthly Earnings ⁷	\$1,051	\$1,071	\$941	\$1,050	\$1,041	\$1,015	\$1,069	\$1,129	\$1,090
Three Months Employment ⁸	74%	79%	63%	78%	41%	79%	69%	65%	70%

Work Activity of all enrolled in VIEW Since Program Implementation 10/1/97

Cumulative Data	Total EDD17	Isle of Wight	South - ampton	Chesa- peake	Franklin City	Norfolk	Portsmouth	Suffolk	VA Beach
Individuals Referred	44,117	973	837	7,031	692	14,259	7,204	2,824	10,297
Total Enrolled in VIEW ^{3, 5}	31,644	689	651	5,026	542	10,076	5,598	2,174	6,888
Participants in a Work Activity	30,003	663	620	4,782	529	9,578	5,271	2,142	6,418
% of Total Enrolled	95%	96%	95%	95%	98%	95%	94%	99%	93%
Participants Employed	22,840	501	391	3,732	372	7,281	4,184	1,649	4,730
% of Total Enrolled	72%	73%	60%	74%	69%	72%	75%	76%	69%
Average Wage ⁶	\$6.66	\$6.71	\$6.43	\$6.81	\$6.30	\$6.55	\$6.57	\$6.51	\$6.99
Average Monthly Earnings ⁷	\$879	\$898	\$813	\$904	\$789	\$844	\$889	\$854	\$938
Five Months Employment ⁹	57%	55%	47%	57%	54%	55%	61%	59%	57%

VIEW Rankings, Fiscal Year to Date

This section lists the relative state fiscal year to date rankings of localities by Percent Enrolled who became Employed, Average Wage, and Percent Employed Three Months after Initial Employment. Scores from 0 to 10 are also assigned and the scores averaged to calculate an overall rank.

FIPS Code	Locality	Percent Employed	Score from 0 to 10	Rank	Average Wage	Score from 0 to 10	Rank	Percent Employed at 3 Months	Score from 0 to 10	Rank	Average Score	Rank
001	<i>Accomack</i>	38.2%	2.25	107	\$7.76	4.10	73	71.4%	6.19	54	4.18	99
003	<i>Albemarle</i>	49.1%	4.26	64	\$8.70	6.46	10	76.6%	6.88	35	5.87	22
005	<i>Alleghany/Covington</i>	46.4%	3.76	85	\$7.83	4.27	65	68.4%	5.79	71	4.61	81
007	<i>Amelia</i>	53.8%	5.15	39	\$8.05	4.82	44	79.2%	7.22	26	5.73	27
009	<i>Amherst</i>	50.7%	4.56	56	\$7.72	3.99	75	64.7%	5.29	86	4.62	80
011	<i>Appomattox</i>	61.5%	6.58	13	\$7.50	3.44	98	75.0%	6.67	42	5.56	41
013	<i>Arlington</i>	44.2%	3.35	93	\$9.63	8.79	4	76.3%	6.84	36	6.33	11
015	<i>Augusta/S'ton/W'boro</i>	54.3%	5.23	38	\$7.69	3.92	78	81.9%	7.58	18	5.58	38
017	<i>Bath</i>	50.0%	4.44	57	\$7.27	2.86	111	50.0%	3.33	113	3.54	112
019	<i>Bedford County/City</i>	53.6%	5.10	42	\$7.87	4.37	61	64.7%	5.29	87	4.92	63
021	<i>Bland</i>	46.2%	3.72	86	\$7.50	3.44	99	66.7%	5.56	76	4.24	96
023	<i>Botetourt</i>	26.1%	0.00	119	\$7.58	3.64	87	57.1%	4.29	107	2.64	118
025	<i>Brunswick</i>	43.8%	3.29	95	\$7.16	2.59	115	71.4%	6.19	55	4.02	108
027	<i>Buchanan</i>	50.0%	4.44	58	\$8.12	5.00	35	65.9%	5.45	80	4.96	60
029	<i>Buckingham</i>	48.0%	4.06	69	\$8.09	4.92	39	85.3%	8.04	11	5.68	30
031	<i>Campbell</i>	52.8%	4.95	47	\$8.00	4.70	49	65.8%	5.44	81	5.03	59
033	<i>Caroline</i>	50.9%	4.60	53	\$7.93	4.52	54	86.9%	8.25	9	5.79	23
035	<i>Carroll</i>	53.7%	5.13	40	\$7.31	2.96	108	75.0%	6.67	43	4.92	64
036	<i>Charles City</i>	50.0%	4.44	59	\$6.13	0.00	119	25.0%	0.00	119	1.48	119
037	<i>Charlotte</i>	40.0%	2.58	101	\$7.89	4.42	60	70.4%	6.05	58	4.35	93
041	<i>Chesterfield/Col Hgts</i>	47.7%	4.00	73	\$8.25	5.33	29	80.9%	7.45	21	5.59	37
043	<i>Clarke</i>	66.7%	7.53	3	\$7.92	4.50	55	44.4%	2.59	116	4.87	68
045	<i>Craig</i>	63.6%	6.96	6	\$7.97	4.62	50	100.0%	10.00	1	7.20	3
047	<i>Culpeper</i>	50.0%	4.44	60	\$8.70	6.46	11	76.7%	6.89	34	5.93	20
049	<i>Cumberland</i>	49.1%	4.26	65	\$8.14	5.05	34	90.5%	8.73	7	6.01	17
051	<i>Dickensen</i>	58.6%	6.03	19	\$7.40	3.19	106	62.2%	4.95	96	4.73	75
053	<i>Dinwiddie</i>	52.5%	4.89	48	\$8.11	4.97	36	59.4%	4.58	103	4.82	70
057	<i>Essex</i>	53.7%	5.11	41	\$7.60	3.69	85	70.4%	6.05	59	4.95	61
059	<i>Fairfax/Falls Church</i>	45.8%	3.65	90	\$10.07	9.90	2	76.2%	6.82	37	6.79	6
061	<i>Fauquier</i>	55.3%	5.42	32	\$8.41	5.73	18	68.8%	5.83	68	5.66	31
063	<i>Floyd</i>	57.6%	5.84	22	\$7.56	3.59	91	77.8%	7.04	31	5.49	43
065	<i>Fluvanna</i>	55.6%	5.47	31	\$7.76	4.10	74	100.0%	10.00	2	6.52	9
067	<i>Franklin County</i>	37.1%	2.04	108	\$7.81	4.22	68	68.8%	5.83	69	4.03	106
069	<i>Frederick</i>	48.2%	4.10	68	\$8.56	6.11	13	75.5%	6.73	39	5.64	32
071	<i>Giles</i>	54.9%	5.34	35	\$8.32	5.50	24	69.6%	5.94	61	5.60	36
073	<i>Gloucester</i>	47.3%	3.93	78	\$7.92	4.50	56	63.6%	5.15	89	4.53	85
075	<i>Goochland</i>	34.8%	1.61	113	\$7.83	4.27	66	83.3%	7.78	13	4.55	84
077	<i>Grayson</i>	46.9%	3.86	80	\$7.70	3.94	77	62.5%	5.00	94	4.27	95

VIEW Rankings, Fiscal Year to Date, cont.

FIPS Code	Locality	Percent Employed	Score from 0 to 10	Rank	Average Wage	Score from 0 to 10	Rank	Percent Employed at 3 Months	Score from 0 to 10	Rank	Average Score	Rank
079	Greene	55.3%	5.42	33	\$7.83	4.27	67	68.2%	5.76	74	5.15	52
081	Greensville/Emporia	35.0%	1.65	112	\$7.41	3.22	105	50.0%	3.33	114	2.73	117
083	Halifax	34.0%	1.46	114	\$7.80	4.20	70	75.5%	6.73	38	4.13	101
085	Hanover	39.8%	2.53	103	\$9.24	7.81	6	82.7%	7.69	16	6.01	18
087	Henrico	45.9%	3.68	89	\$8.44	5.80	16	80.6%	7.42	23	5.63	33
089	Henry/Martinsville	47.3%	3.94	76	\$7.64	3.79	82	61.8%	4.90	97	4.21	98
091	Highland	N/A	N/A	N/A	N/A	N/A	N/A	N/A	N/A	N/A	N/A	N/A
093	Isle of Wight	62.2%	6.71	9	\$7.81	4.22	69	78.9%	7.18	28	6.04	15
095	James City	65.0%	7.22	5	\$7.95	4.57	53	69.1%	5.88	65	5.89	21
097	King and Queen	28.6%	0.46	118	\$7.96	4.60	52	80.0%	7.33	25	4.13	102
099	King George	37.0%	2.03	109	\$8.43	5.78	17	69.2%	5.90	62	4.57	82
101	King William	55.8%	5.51	30	\$8.28	5.40	28	64.7%	5.29	88	5.40	44
103	Lancaster	58.3%	5.98	21	\$8.05	4.82	45	73.3%	6.44	51	5.75	26
105	Lee	60.4%	6.36	17	\$7.08	2.39	116	83.2%	7.76	15	5.50	42
107	Loudoun	54.8%	5.33	37	\$10.11	10.00	1	74.5%	6.60	48	7.31	2
109	Louisa	47.4%	3.95	74	\$8.07	4.87	42	61.5%	4.87	98	4.56	83
111	Lunenburg	31.1%	0.93	117	\$7.00	2.19	118	100.0%	10.00	3	4.37	90
113	Madison	50.0%	4.44	61	\$8.18	5.15	33	83.3%	7.78	14	5.79	24
115	Mathews	61.5%	6.58	14	\$8.30	5.45	26	100.0%	10.00	4	7.34	1
117	Mecklenburg	40.8%	2.74	99	\$7.50	3.44	100	69.2%	5.90	63	4.03	107
119	Middlesex	44.2%	3.36	92	\$7.18	2.64	113	94.4%	9.26	5	5.08	56
121	Montgomery	65.7%	7.35	4	\$7.85	4.32	63	74.3%	6.58	49	6.08	13
125	Nelson	61.8%	6.62	12	\$7.80	4.20	71	58.8%	4.51	105	5.11	54
127	New Kent	37.0%	2.03	110	\$8.82	6.76	9	87.5%	8.33	8	5.71	29
131	Northampton	33.3%	1.34	116	\$8.35	5.58	21	86.4%	8.18	10	5.03	58
133	Northumberland	53.3%	5.05	43	\$8.68	6.41	12	55.6%	4.07	109	5.18	51
135	Nottoway	39.0%	2.39	105	\$7.56	3.59	92	81.5%	7.53	20	4.51	86
137	Orange	50.7%	4.57	55	\$7.52	3.49	95	72.7%	6.36	52	4.81	71
139	Page	46.7%	3.82	83	\$8.36	5.60	20	61.0%	4.80	99	4.74	74
141	Patrick	53.2%	5.03	45	\$7.29	2.91	109	66.7%	5.56	77	4.50	87
143	Pittsylvania	39.1%	2.42	104	\$7.63	3.77	83	64.9%	5.31	84	3.83	109
145	Powhatan	59.3%	6.15	18	\$9.02	7.26	7	81.8%	7.58	19	7.00	4
147	Prince Edward	50.8%	4.58	54	\$7.48	3.39	101	75.0%	6.67	44	4.88	67
149	Prince George	45.1%	3.52	91	\$7.97	4.62	51	55.2%	4.02	110	4.06	105
153	Prince William	49.5%	4.35	62	\$9.42	8.27	5	75.4%	6.71	40	6.44	10
155	Pulaski	42.0%	2.96	97	\$7.57	3.62	88	55.7%	4.10	108	3.56	111
157	Rappahannock	80.0%	10.00	1	\$8.19	5.18	32	66.7%	5.56	78	6.91	5
159	Richmond County	48.0%	4.06	70	\$7.54	3.54	94	42.9%	2.38	117	3.33	115
161	Roanoke County	62.1%	6.69	10	\$8.11	4.97	37	62.9%	5.05	93	5.57	40
163	Rockbridge/BV/Lex	46.0%	3.69	88	\$7.18	2.64	114	85.0%	8.00	12	4.78	72
165	Rockingham/H'burg	56.0%	5.55	28	\$8.01	4.72	47	63.4%	5.12	90	5.13	53
167	Russell	47.0%	3.88	79	\$7.27	2.86	112	60.2%	4.70	100	3.82	110
169	Scott	47.7%	4.02	72	\$7.28	2.89	110	93.1%	9.08	6	5.33	46
171	Shenandoah	61.5%	6.58	15	\$7.72	3.99	76	50.0%	3.33	115	4.63	78

VIEW Rankings, Fiscal Year to Date, cont.

FIPS Code	Locality	Percent Employed	Score from 0 to 10	Rank	Average Wage	Score from 0 to 10	Rank	Percent Employed at 3 Months	Score from 0 to 10	Rank	Average Score	Rank
173	<i>Smyth</i>	36.5%	1.93	111	\$7.51	3.47	96	60.0%	4.67	101	3.36	114
175	<i>Southampton</i>	40.0%	2.58	102	\$8.31	5.48	25	62.5%	5.00	95	4.35	92
177	<i>Spotsylvania</i>	56.3%	5.61	24	\$8.38	5.65	19	75.0%	6.67	45	5.98	19
179	<i>Stafford</i>	43.8%	3.29	94	\$8.54	6.06	14	74.7%	6.63	47	5.32	47
181	<i>Surry</i>	51.0%	4.62	52	\$8.03	4.77	46	59.1%	4.55	104	4.65	77
183	<i>Sussex</i>	46.1%	3.70	87	\$7.48	3.39	102	66.7%	5.56	79	4.22	97
185	<i>Tazewell</i>	54.9%	5.35	34	\$7.44	3.29	104	71.4%	6.19	56	4.94	62
187	<i>Warren</i>	51.9%	4.79	49	\$8.33	5.53	22	51.6%	3.55	112	4.62	79
191	<i>Washington</i>	54.9%	5.34	36	\$7.38	3.14	107	58.3%	4.44	106	4.31	94
193	<i>Westmoreland</i>	56.0%	5.55	27	\$7.92	4.50	57	75.0%	6.67	46	5.57	39
195	<i>Wise</i>	56.2%	5.59	25	\$7.45	3.32	103	68.7%	5.82	70	4.91	65
197	<i>Wythe</i>	47.4%	3.95	75	\$7.56	3.59	93	69.1%	5.88	66	4.47	88
199	<i>York/Poquoson</i>	60.4%	6.37	16	\$7.67	3.87	81	78.0%	7.07	29	5.77	25
510	<i>Alexandria</i>	47.8%	4.02	71	\$9.67	8.89	3	77.8%	7.04	32	6.65	8
520	<i>Bristol</i>	49.0%	4.25	66	\$7.63	3.77	84	63.3%	5.11	91	4.38	89
540	<i>Charlottesville</i>	47.3%	3.93	77	\$8.45	5.83	15	65.4%	5.39	82	5.05	57
550	<i>Chesapeake</i>	63.0%	6.85	7	\$7.78	4.15	72	77.9%	7.06	30	6.02	16
590	<i>Danville</i>	33.8%	1.43	115	\$7.68	3.89	80	59.4%	4.59	102	3.30	116
620	<i>Franklin City</i>	41.0%	2.76	98	\$8.25	5.33	30	40.9%	2.12	118	3.40	113
630	<i>Fredericksburg</i>	61.9%	6.64	11	\$8.29	5.43	27	76.9%	6.92	33	6.33	12
640	<i>Galax</i>	42.7%	3.08	96	\$7.60	3.69	86	67.7%	5.70	75	4.16	100
650	<i>Hampton</i>	55.9%	5.53	29	\$8.08	4.90	40	75.4%	6.71	41	5.72	28
670	<i>Hopewell</i>	40.8%	2.73	100	\$7.51	3.47	97	70.5%	6.06	57	4.08	104
680	<i>Lynchburg</i>	53.2%	5.04	44	\$7.69	3.92	79	68.2%	5.76	73	4.91	66
683	<i>Manassas</i>	46.6%	3.81	84	\$8.88	6.91	8	80.7%	7.42	22	6.05	14
685	<i>Manassas Park</i>	69.4%	8.04	2	\$8.33	5.53	23	73.7%	6.49	50	6.69	7
700	<i>Newport News</i>	51.8%	4.77	50	\$7.91	4.47	58	72.5%	6.33	53	5.19	50
710	<i>Norfolk</i>	58.6%	6.02	20	\$7.57	3.62	89	79.1%	7.21	27	5.62	35
720	<i>Norton</i>	51.1%	4.63	51	\$7.05	2.31	117	82.4%	7.65	17	4.86	69
730	<i>Petersburg</i>	46.8%	3.84	81	\$8.11	4.97	38	80.1%	7.35	24	5.39	45
740	<i>Portsmouth</i>	52.8%	4.95	46	\$7.91	4.47	59	69.1%	5.88	64	5.10	55
750	<i>Radford</i>	62.7%	6.78	8	\$7.85	4.32	64	68.4%	5.79	72	5.63	34
760	<i>Richmond City</i>	38.5%	2.30	106	\$8.08	4.90	41	69.0%	5.87	67	4.36	91
770	<i>Roanoke City</i>	46.8%	3.83	82	\$8.06	4.85	43	65.2%	5.36	83	4.68	76
800	<i>Suffolk</i>	56.1%	5.57	26	\$8.01	4.72	48	64.8%	5.30	85	5.20	49
810	<i>Virginia Beach</i>	49.4%	4.33	63	\$8.25	5.33	31	70.1%	6.02	60	5.22	48
830	<i>Williamsburg</i>	56.4%	5.62	23	\$7.57	3.62	90	63.2%	5.09	92	4.78	73
840	<i>Winchester</i>	48.7%	4.19	67	\$7.87	4.37	62	52.9%	3.73	111	4.10	103

The rankings are displayed to provide some indication of relative standing. They are not intended to represent scaled performance measures. Ties were resolved by carrying out the numbers to greater detail than displayed, and then if ties remained, FIPS code order was used. The calculation of scores is done to make the determination of a combined rank more equitable. See the bottom of the endnotes on page 44 for an explanation of how the scores are calculated.

VIEW Rankings, From Inception of VIEW

This section lists the relative cumulative rankings of localities by Percent Enrolled who became Employed, Average Monthly Earnings, and Percent Employed Five Months after Initial Employment. Scores from 0 to 10 are also assigned and the scores averaged to calculate an overall rank.

FIPS Code	Locality	Percent Em- ployed	Score from 0 to 10	Rank	Average Monthly Earnings	Score from 0 to 10	Rank	Percent Employed at 5 Months	Score from 0 to 10	Rank	Average Score	Rank
001	Accomack	54.0%	2.10	114	\$821	2.57	97	57.9%	6.83	31	3.84	107
003	Albemarle	74.4%	7.96	12	\$994	6.07	17	54.5%	5.92	61	6.65	17
005	Alleghany/Covington	72.1%	7.30	27	\$813	2.42	100	45.9%	3.60	108	4.44	89
007	Amelia	61.2%	4.17	99	\$938	4.95	37	46.0%	3.64	106	4.25	97
009	Amherst	67.9%	6.10	54	\$835	2.86	91	51.7%	5.15	80	4.71	84
011	Appomattox	71.5%	7.15	32	\$839	2.94	88	44.0%	3.08	113	4.39	93
013	Arlington	73.8%	7.80	18	\$1,035	6.91	11	64.1%	8.50	9	7.74	5
015	Augusta/S'ton/W'boro	67.8%	6.08	56	\$938	4.93	40	54.7%	5.96	57	5.66	38
017	Bath	64.1%	5.01	85	\$706	0.25	119	54.2%	5.83	64	3.70	109
019	Bedford County/City	67.0%	5.85	66	\$827	2.69	95	55.1%	6.08	55	4.88	75
021	Bland	63.0%	4.70	90	\$822	2.59	96	47.9%	4.13	98	3.81	108
023	Botetourt	48.8%	0.62	119	\$915	4.47	52	41.5%	2.43	116	2.51	119
025	Brunswick	57.5%	3.12	109	\$808	2.31	104	56.9%	6.57	39	4.00	101
027	Buchanan	52.5%	1.67	117	\$812	2.39	102	54.5%	5.93	60	3.33	114
029	Buckingham	57.3%	3.07	111	\$922	4.62	47	52.6%	5.40	75	4.36	95
031	Campbell	69.2%	6.49	44	\$868	3.53	74	59.7%	7.32	22	5.78	37
033	Caroline	62.6%	4.57	94	\$945	5.08	34	43.1%	2.85	115	4.17	99
035	Carroll	66.8%	5.79	69	\$799	2.14	110	46.4%	3.75	104	3.89	105
036	Charles City	53.4%	1.94	115	\$871	3.58	71	59.0%	7.12	26	4.21	98
037	Charlotte	52.5%	1.66	118	\$899	4.15	61	47.2%	3.94	102	3.25	116
041	Chesterfield/Col Hgts	66.5%	5.69	71	\$998	6.16	16	60.6%	7.56	16	6.47	22
043	Clarke	61.2%	4.19	98	\$958	5.35	27	47.3%	3.97	101	4.50	88
045	Craig	64.0%	4.98	86	\$1,042	7.04	9	69.2%	9.89	2	7.30	7
047	Culpeper	65.0%	5.26	79	\$948	5.13	31	55.8%	6.27	50	5.56	44
049	Cumberland	57.4%	3.09	110	\$937	4.92	42	46.8%	3.83	103	3.95	103
051	Dickensen	59.7%	3.76	106	\$802	2.18	107	48.9%	4.41	96	3.45	111
053	Dinwiddie	68.1%	6.16	53	\$940	4.97	36	52.6%	5.40	74	5.51	45
057	Essex	69.9%	6.68	40	\$837	2.90	89	40.8%	2.23	118	3.93	104
059	Fairfax/Falls Church	68.9%	6.39	45	\$1,111	8.45	4	61.8%	7.88	12	7.57	6
061	Fauquier	69.5%	6.55	43	\$990	5.99	19	61.8%	7.87	13	6.81	13
063	Floyd	70.7%	6.93	37	\$910	4.37	54	45.8%	3.56	110	4.95	72
065	Fluvanna	74.6%	8.02	11	\$1,082	7.86	5	54.6%	5.93	59	7.27	8
067	Franklin County	64.8%	5.20	82	\$930	4.79	45	50.0%	4.71	87	4.90	74
069	Frederick	61.7%	4.33	96	\$970	5.59	26	53.7%	5.70	68	5.21	58
071	Giles	59.9%	3.80	105	\$938	4.93	39	48.3%	4.26	97	4.33	96
073	Gloucester	67.3%	5.92	63	\$833	2.82	92	56.0%	6.32	47	5.02	68
075	Goochland	66.2%	5.62	73	\$860	3.36	78	54.7%	5.96	58	4.98	71
077	Grayson	65.5%	5.43	76	\$828	2.71	94	56.6%	6.48	42	4.87	76

VIEW Rankings, From Inception cont.

FIPS Code	Locality	Percent Employed	Score from 0 to 10	Rank	Average Monthly Earnings	Score from 0 to 10	Rank	Percent Employed at 5 Months	Score from 0 to 10	Rank	Average Score	Rank
079	Greene	76.3%	8.52	5	\$908	4.34	55	49.2%	4.49	93	5.78	36
081	Greensville/Emporia	57.3%	3.05	112	\$800	2.15	109	56.0%	6.32	48	3.84	106
083	Halifax	58.9%	3.51	108	\$820	2.55	98	47.7%	4.08	99	3.38	113
085	Hanover	63.1%	4.73	89	\$1,061	7.42	8	65.0%	8.75	7	6.97	10
087	Henrico	68.4%	6.25	50	\$1,009	6.37	14	56.2%	6.37	44	6.33	25
089	Henry/Martinsville	64.9%	5.25	80	\$919	4.56	48	54.2%	5.84	62	5.22	57
091	Highland	71.4%	7.12	33	\$694	0.00	120	60.0%	7.40	21	4.84	78
093	Isle of Wight	72.7%	7.49	24	\$898	4.13	62	55.3%	6.14	52	5.92	33
095	James City	72.7%	7.49	23	\$872	3.61	70	51.3%	5.05	83	5.38	50
097	King and Queen	53.3%	1.92	116	\$879	3.74	68	35.6%	0.83	119	2.16	120
099	King George	68.3%	6.22	51	\$912	4.42	53	49.4%	4.54	91	5.06	65
101	King William	60.9%	4.10	100	\$974	5.66	25	45.3%	3.43	111	4.40	92
103	Lancaster	67.4%	5.97	60	\$829	2.73	93	49.1%	4.46	95	4.39	94
105	Lee	65.8%	5.51	75	\$758	1.30	116	60.3%	7.48	19	4.77	80
107	Loudoun	79.5%	9.45	3	\$1,160	9.43	2	65.3%	8.81	6	9.23	1
109	Louisa	62.7%	4.62	91	\$952	5.23	30	55.5%	6.18	51	5.34	51
111	Lunenburg	46.7%	0.00	120	\$728	0.70	117	61.0%	7.66	15	2.79	118
113	Madison	66.4%	5.67	72	\$987	5.93	20	45.8%	3.58	109	5.06	64
115	Mathews	63.1%	4.73	88	\$862	3.40	76	53.3%	5.60	70	4.58	86
117	Mecklenburg	67.4%	5.95	62	\$807	2.29	105	58.2%	6.91	29	5.05	66
119	Middlesex	67.2%	5.91	65	\$863	3.43	75	57.0%	6.58	37	5.31	53
121	Montgomery	80.5%	9.72	2	\$916	4.50	51	53.9%	5.77	66	6.66	16
125	Nelson	68.8%	6.35	46	\$993	6.05	18	53.8%	5.72	67	6.04	31
127	New Kent	63.6%	4.87	87	\$1,002	6.23	15	51.8%	5.20	79	5.43	48
131	Northampton	62.3%	4.50	95	\$801	2.17	108	66.1%	9.05	4	5.24	56
133	Northumberland	60.6%	4.00	103	\$840	2.95	87	41.0%	2.29	117	3.08	117
135	Nottoway	68.2%	6.19	52	\$869	3.54	73	55.2%	6.09	54	5.27	55
137	Orange	72.3%	7.37	25	\$941	4.99	35	43.6%	2.97	114	5.11	62
139	Page	72.0%	7.29	29	\$975	5.69	24	55.8%	6.28	49	6.42	23
141	Patrick	66.9%	5.81	68	\$794	2.03	111	65.7%	8.93	5	5.59	43
143	Pittsylvania	56.7%	2.88	113	\$848	3.13	83	50.9%	4.95	85	3.65	110
145	Powhatan	60.9%	4.08	102	\$905	4.27	58	54.1%	5.81	65	4.72	82
147	Prince Edward	73.3%	7.67	19	\$853	3.23	82	60.4%	7.51	17	6.14	30
149	Prince George	62.7%	4.61	92	\$981	5.81	21	50.0%	4.71	88	5.04	67
153	Prince William	74.2%	7.91	15	\$1,188	10.00	1	61.8%	7.89	11	8.60	2
155	Pulaski	65.2%	5.33	78	\$925	4.67	46	44.9%	3.32	112	4.44	90
157	Rappahannock	66.7%	5.75	70	\$958	5.35	28	51.5%	5.12	81	5.41	49
159	Richmond County	65.4%	5.38	77	\$917	4.51	50	32.5%	0.00	120	3.30	115
161	Roanoke County	75.3%	8.24	8	\$1,022	6.64	12	52.4%	5.35	77	6.74	14
163	Rockbridge/BV/Lex	74.1%	7.90	16	\$847	3.10	84	54.7%	5.97	56	5.66	39
165	Rockingham/H'burg	74.3%	7.94	13	\$937	4.92	41	58.3%	6.95	27	6.61	18
167	Russell	62.6%	4.59	93	\$836	2.87	90	57.9%	6.83	32	4.76	81
169	Scott	58.9%	3.51	107	\$861	3.39	77	64.6%	8.63	8	5.18	61
171	Shenandoah	67.0%	5.85	67	\$902	4.21	60	53.1%	5.54	71	5.20	59

VIEW Rankings, From Inception cont.

FIPS Code	Locality	Percent Employed	Score from 0 to 10	Rank	Average Monthly Earnings	Score from 0 to 10	Rank	Percent Employed at 5 Months	Score from 0 to 10	Rank	Average Score	Rank
173	<i>Smyth</i>	61.5%	4.25	97	\$804	2.23	106	52.7%	5.42	72	3.97	102
175	<i>Southampton</i>	60.1%	3.85	104	\$813	2.40	101	47.5%	4.02	100	3.42	112
177	<i>Spotsylvania</i>	70.4%	6.84	38	\$1,020	6.60	13	57.0%	6.59	36	6.68	15
179	<i>Stafford</i>	60.9%	4.09	101	\$1,114	8.50	3	57.9%	6.84	30	6.47	21
181	<i>Surry</i>	71.3%	7.09	34	\$855	3.25	79	50.0%	4.71	89	5.02	69
183	<i>Sussex</i>	67.5%	5.98	59	\$933	4.83	44	57.1%	6.63	34	5.81	35
185	<i>Tazewell</i>	68.7%	6.33	47	\$785	1.84	115	57.1%	6.62	35	4.93	73
187	<i>Warren</i>	70.1%	6.74	39	\$978	5.76	23	56.2%	6.36	45	6.29	26
191	<i>Washington</i>	67.5%	5.99	57	\$873	3.63	69	49.4%	4.53	92	4.72	83
193	<i>Westmoreland</i>	66.0%	5.57	74	\$897	4.11	63	50.3%	4.80	86	4.82	79
195	<i>Wise</i>	64.4%	5.10	83	\$785	1.85	114	56.9%	6.57	38	4.51	87
197	<i>Wythe</i>	67.5%	5.99	58	\$819	2.53	99	56.4%	6.43	43	4.98	70
199	<i>York/Poquoson</i>	64.8%	5.22	81	\$869	3.54	72	46.0%	3.64	107	4.13	100
510	<i>Alexandria</i>	71.2%	7.06	35	\$1,040	7.00	10	69.7%	10.00	1	8.02	4
520	<i>Bristol</i>	71.2%	7.06	36	\$845	3.05	85	49.1%	4.47	94	4.86	77
540	<i>Charlottesville</i>	81.4%	10.00	1	\$917	4.52	49	56.0%	6.33	46	6.95	11
550	<i>Chesapeake</i>	74.3%	7.93	14	\$904	4.24	59	56.7%	6.51	40	6.23	29
590	<i>Danville</i>	67.2%	5.92	64	\$788	1.90	113	52.5%	5.39	76	4.40	91
620	<i>Franklin City</i>	68.6%	6.32	49	\$789	1.93	112	53.6%	5.67	69	4.64	85
630	<i>Fredericksburg</i>	78.4%	9.12	4	\$979	5.77	22	54.2%	5.83	63	6.91	12
640	<i>Galax</i>	64.2%	5.06	84	\$854	3.24	81	59.5%	7.27	23	5.19	60
650	<i>Hampton</i>	72.0%	7.29	28	\$895	4.08	64	52.6%	5.41	73	5.60	42
670	<i>Hopewell</i>	69.8%	6.65	42	\$905	4.27	57	51.4%	5.08	82	5.33	52
680	<i>Lynchburg</i>	72.8%	7.52	22	\$808	2.32	103	62.4%	8.05	10	5.96	32
683	<i>Manassas</i>	67.4%	5.95	61	\$1,078	7.77	6	59.3%	7.22	24	6.98	9
685	<i>Manassas Park</i>	75.3%	8.23	9	\$1,066	7.52	7	67.5%	9.43	3	8.39	3
700	<i>Newport News</i>	73.8%	7.80	17	\$906	4.29	56	58.2%	6.91	28	6.34	24
710	<i>Norfolk</i>	72.3%	7.36	26	\$844	3.04	86	55.2%	6.12	53	5.51	46
720	<i>Norton</i>	75.8%	8.38	7	\$723	0.59	118	60.2%	7.46	20	5.48	47
730	<i>Petersburg</i>	71.7%	7.19	30	\$934	4.87	43	57.7%	6.77	33	6.27	27
740	<i>Portsmouth</i>	74.7%	8.07	10	\$889	3.94	67	61.1%	7.70	14	6.57	20
750	<i>Radford</i>	73.0%	7.59	21	\$894	4.05	65	46.1%	3.65	105	5.10	63
760	<i>Richmond City</i>	71.6%	7.17	31	\$948	5.13	32	60.3%	7.49	18	6.60	19
770	<i>Roanoke City</i>	67.9%	6.09	55	\$947	5.12	33	49.7%	4.63	90	5.28	54
800	<i>Suffolk</i>	75.9%	8.39	6	\$854	3.24	80	59.2%	7.17	25	6.27	28
810	<i>Virginia Beach</i>	68.7%	6.33	48	\$938	4.93	38	56.6%	6.49	41	5.92	34
830	<i>Williamsburg</i>	73.1%	7.62	20	\$890	3.96	66	52.3%	5.32	78	5.63	41
840	<i>Winchester</i>	69.8%	6.66	41	\$954	5.26	29	51.0%	4.98	84	5.63	40

The rankings are displayed to provide some indication of relative standing. They are not intended to represent scaled performance measures. Ties were resolved by carrying out the numbers to greater detail than displayed, and then if ties remained, FIPS code order was used. The calculation of scores was begun in May 1999 to make the determination of a combined rank more equitable. See the bottom of the endnotes on page 44 for an explanation of how the scores are calculated.

State Summary July 1, 2009 – December 31, 2009

	State	ED 1	ED 2	ED 3	ED 4	ED 5	ED 6	ED 7	ED 8	ED 9	ED 10	ED 11	ED 12	ED 13	ED 14	ED 15	ED 16	ED 17	ED 18
Timely Enrollment¹¹																			
Total Due Since July 1, 2009	8,179	446	283	640	272	153	877	109	175	348	373	287	1,264	324	102	765	308	1,373	80
Cumulative % Timely Since July 1, 2009	90%	92%	95%	93%	93%	80%	86%	94%	96%	97%	95%	94%	85%	81%	87%	94%	83%	89%	86%
% Timely in December 2009	91%	88%	99%	92%	97%	73%	90%	100%	98%	99%	97%	94%	81%	76%	93%	92%	88%	95%	92%
Work Activity 95 Days after Referral¹²																			
Total Possible Since July 1, 2009	6,893	417	299	623	247	114	746	110	208	288	388	221	964	229	78	628	219	1,067	47
Cumulative % Since July 1, 2009	95%	97%	98%	95%	98%	96%	94%	95%	97%	95%	98%	97%	94%	96%	96%	92%	93%	92%	96%
Percent in December 2009	95%	99%	99%	96%	100%	92%	94%	98%	99%	96%	98%	98%	94%	91%	96%	90%	96%	92%	91%
Status of Waiting List for Enrollment¹⁴																			
# Over 30 Days	176	23	1	7	3	13	24	1	7	0	3	3	46	23	2	13	4	3	0
Average # of Days Over 30	27	25	6	12	30	15	30	75	82	0	16	24	28	23	11	33	22	6	0

EDD1 – Southwest Region: July 1, 2009 - December 31, 2009

	Total EDD1	Buchanan	Dickenson	Lee	Russell	Scott	Tazewell	Wise	Norton
Timely Enrollment¹¹									
Total Due Since July 1, 2009	446	38	27	70	53	64	58	119	17
Cumulative % Timely Since July 1, 2009	92%	100%	96%	91%	98%	86%	98%	92%	53%
% Timely in December 2009	88%	100%	100%	79%	100%	69%	100%	97%	14%
Work Activity 95 Days after Referral¹²									
Total Possible Since July 1, 2009	417	30	33	63	56	43	77	107	8
Cumulative % Since July 1, 2009	97%	97%	91%	100%	100%	98%	100%	96%	63%
Percent in December 2009	99%	100%	92%	100%	100%	100%	100%	97%	100%
Status of Waiting List for Enrollment¹⁴									
# Over 30 Days	23	0	0	5	0	8	0	3	7
Average # of Days Over 30	25	0	0	23	0	28	0	32	18

EDD2 - Bristol-Galax Region: July 1, 2009 - December 31, 2009

	<i>Total EDD2</i>	<i>Bland</i>	<i>Carroll</i>	<i>Grayson</i>	<i>Smyth</i>	<i>Wash.</i>	<i>Wythe</i>	<i>Bristol</i>	<i>Galax</i>
<u>Timely Enrollment</u>¹¹									
Total Due Since July 1, 2009	283	6	43	11	47	48	26	71	31
Cumulative % Timely Since July 1, 2009	95%	100%	100%	91%	94%	100%	77%	97%	97%
% Timely in December 2009	99%	100%	100%	50%	100%	100%	100%	100%	100%
<u>Work Activity 95 Days after Referral</u>¹²									
Total Possible Since July 1, 2009	299	2	37	12	59	49	30	74	36
Cumulative % Since July 1, 2009	98%	100%	100%	100%	97%	100%	100%	100%	92%
Percent in December 2009	99%	100%	100%	100%	96%	100%	100%	100%	100%
<u>Status of Waiting List for Enrollment</u>¹⁴									
# Over 30 Days	1	0	0	1	0	0	0	0	0
Average # of Days Over 30	6	0	0	6	0	0	0	0	0

EDD3 - Roanoke Region: July 1, 2009 - December 31, 2009

	<i>Total EDD3</i>	<i>Alleghny/ Covington</i>	<i>Bote- tourt</i>	<i>Craig</i>	<i>Floyd</i>	<i>Franklin County</i>	<i>Giles</i>	<i>Mont- gomery</i>	<i>Pulaski</i>	<i>Roanoke County</i>	<i>Radford</i>	<i>Roanoke City</i>
<u>Timely Enrollment</u>¹¹												
Total Due Since July 1, 2009	640	45	9	4	4	55	11	99	32	75	21	285
Cumulative % Timely Since July 1, 2009	93%	93%	100%	100%	100%	60%	100%	100%	100%	95%	86%	95%
% Timely in December 2009	92%	50%	100%	100%	100%	69%	100%	100%	100%	94%	86%	92%
<u>Work Activity 95 Days after Referral</u>¹²												
Total Possible Since July 1, 2009	623	35	4	3	6	38	12	86	53	64	16	306
Cumulative % Since July 1, 2009	95%	97%	100%	100%	100%	71%	100%	100%	100%	94%	100%	95%
Percent in December 2009	96%	100%	100%	100%	100%	69%	100%	100%	100%	97%	100%	96%
<u>Status of Waiting List for Enrollment</u>¹⁴												
# Over 30 Days	7	1	0	0	0	2	0	0	0	0	0	4
Average # of Days Over 30	12	29	0	0	0	13	0	0	0	0	0	7

EDD4 - Harrisonburg Region: July 1, 2009 - December 31, 2009

	<i>Total EDD4</i>	<i>Aug/S'ton /W'boro</i>	<i>Bath</i>	<i>Highland</i>	<i>Rockbridge/ BV/Lex</i>	<i>Rockingham/ HBurg</i>
<u>Timely Enrollment</u>¹¹						
Total Due Since July 1, 2009	272	141	2	0	23	106
Cumulative % Timely Since July 1, 2009	93%	99%	100%	N/A	87%	85%
% Timely in December 2009	97%	100%	100%	N/A	100%	91%
<u>Work Activity 95 Days after Referral</u>¹²						
Total Possible Since July 1, 2009	247	154	1	0	14	78
Cumulative % Since July 1, 2009	98%	100%	100%	N/A	79%	99%
Percent in December 2009	100%	100%	100%	N/A	100%	100%
<u>Status of Waiting List for Enrollment</u>¹⁴						
# Over 30 Days	3	1	0	0	0	2
Average # of Days Over 30	30	41	0	0	0	24

EDD5 & EDD18 - Winchester/Eastern Shore Regions: July 1, 2009 - December 31, 2009

	<i>Total EDD5</i>	<i>Clarke</i>	<i>Frederick</i>	<i>Page</i>	<i>Shen.</i>	<i>Warren</i>	<i>Winchester</i>	<i>Total EDD18</i>	<i>Accomack</i>	<i>Nhampton</i>
<u>Timely Enrollment</u>¹¹										
Total Due Since July 1, 2009	153	2	43	33	5	40	30	80	45	35
Cumulative % Timely Since July 1, 2009	80%	100%	47%	100%	40%	98%	87%	86%	93%	77%
% Timely in December 2009	73%	N/A	19%	100%	0%	100%	100%	92%	89%	94%
<u>Work Activity 95 Days after Referral</u>¹²										
Total Possible Since July 1, 2009	114	3	26	26	4	30	25	47	36	11
Cumulative % Since July 1, 2009	96%	100%	96%	100%	100%	93%	96%	96%	97%	91%
Percent in December 2009	92%	N/A	91%	100%	N/A	67%	100%	91%	94%	80%
<u>Status of Waiting List for Enrollment</u>¹⁴										
# Over 30 Days	13	0	13	0	0	0	0	0	0	0
Average # of Days Over 30	15	0	15	0	0	0	0	0	0	0

EDD6 – Northern Virginia Region: July 1, 2009 - December 31, 2009

	<i>Total EDD6</i>	<i>Arlington</i>	<i>Fairfax</i>	<i>Loudoun</i>	<i>Prince William</i>	<i>Alexandria</i>	<i>Manassas</i>	<i>Manassas Park</i>
<u>Timely Enrollment¹¹</u>								
Total Due Since July 1, 2009	877	62	256	83	326	96	38	16
Cumulative % Timely Since July 1, 2009	86%	97%	92%	89%	80%	98%	37%	100%
% Timely in December 2009	90%	96%	96%	92%	86%	100%	30%	100%
<u>Work Activity 95 Days after Referral¹²</u>								
Total Possible Since July 1, 2009	746	73	208	53	277	86	32	17
Cumulative % Since July 1, 2009	94%	100%	88%	96%	95%	95%	91%	100%
Percent in December 2009	94%	100%	89%	100%	95%	100%	90%	100%
<u>Status of Waiting List for Enrollment¹⁴</u>								
# Over 30 Days	24	0	1	0	8	0	15	0
Average # of Days Over 30	30	0	6	0	24	0	34	0

EDD7 - Culpeper Region: July 1, 2009 - December 31, 2009

	<i>Total EDD7</i>	<i>Culpeper</i>	<i>Fauquier</i>	<i>Madison</i>	<i>Orange</i>	<i>Rapp.</i>
<u>Timely Enrollment¹¹</u>						
Total Due Since July 1, 2009	109	44	32	5	28	0
Cumulative % Timely Since July 1, 2009	94%	95%	97%	80%	93%	N/A
% Timely in December 2009	100%	100%	100%	100%	100%	N/A
<u>Work Activity 95 Days after Referral¹²</u>						
Total Possible Since July 1, 2009	110	37	48	11	14	0
Cumulative % Since July 1, 2009	95%	95%	96%	100%	86%	N/A
Percent in December 2009	98%	93%	100%	100%	100%	N/A
<u>Status of Waiting List for Enrollment¹⁴</u>						
# Over 30 Days	1	1	0	0	0	0
Average # of Days Over 30	75	75	0	0	0	0

EDD8 - Charlottesville Region: July 1, 2009 - December 31, 2009

	<i>Total EDD8</i>	<i>Albemarle</i>	<i>Fluvanna</i>	<i>Greene</i>	<i>Louisa</i>	<i>Nelson</i>	<i>Cville</i>
<u>Timely Enrollment</u>¹¹							
Total Due Since July 1, 2009	175	28	5	12	25	2	103
Cumulative % Timely Since July 1, 2009	96%	100%	0%	83%	100%	100%	100%
% Timely in December 2009	98%	100%	N/A	67%	100%	100%	100%
<u>Work Activity 95 Days after Referral</u>¹²							
Total Possible Since July 1, 2009	208	47	0	14	37	11	99
Cumulative % Since July 1, 2009	97%	96%	N/A	100%	95%	100%	98%
Percent in December 2009	99%	100%	N/A	100%	91%	100%	100%
<u>Status of Waiting List for Enrollment</u>¹⁴							
# Over 30 Days	7	0	6	1	0	0	0
Average # of Days Over 30	82	0	90	30	0	0	0

EDD9 - Lynchburg Region: July 1, 2009 - December 31, 2009

	<i>Total EDD9</i>	<i>Amherst</i>	<i>Appom.</i>	<i>Bedford</i>	<i>Campbell</i>	<i>Lynchburg</i>
<u>Timely Enrollment</u>¹¹						
Total Due Since July 1, 2009	348	31	24	67	91	135
Cumulative % Timely Since July 1, 2009	97%	100%	100%	97%	100%	94%
% Timely in December 2009	99%	100%	100%	100%	100%	97%
<u>Work Activity 95 Days after Referral</u>¹²						
Total Possible Since July 1, 2009	288	25	25	51	64	123
Cumulative % Since July 1, 2009	95%	100%	100%	96%	94%	93%
Percent in December 2009	96%	100%	100%	94%	94%	96%
<u>Status of Waiting List for Enrollment</u>¹⁴						
# Over 30 Days	0	0	0	0	0	0
Average # of Days Over 30	0	0	0	0	0	0

EDD10 - Danville Region: July 1, 2009 - December 31, 2009

	<i>Total EDD10</i>	<i>Halifax</i>	<i>Henry/ Martinsville</i>	<i>Patrick</i>	<i>Pittsylvania</i>	<i>Danville</i>
<u>Timely Enrollment</u>¹¹						
Total Due Since July 1, 2009	373	51	145	45	29	103
Cumulative % Timely Since July 1, 2009	95%	98%	94%	98%	100%	91%
% Timely in December 2009	97%	100%	91%	100%	100%	97%
<u>Work Activity 95 Days after Referral</u>¹²						
Total Possible Since July 1, 2009	388	35	128	37	46	142
Cumulative % Since July 1, 2009	98%	100%	98%	95%	100%	99%
Percent in December 2009	98%	100%	100%	100%	100%	94%
<u>Status of Waiting List for Enrollment</u>¹⁴						
# Over 30 Days	3	0	3	0	0	0
Average # of Days Over 30	16	0	16	0	0	0

EDD11 – Southside Region: July 1, 2009 - December 31, 2009

	<i>Total EDD11</i>	<i>Amelia</i>	<i>Brunswick</i>	<i>Buckingham</i>	<i>Charlotte</i>	<i>Cumberland</i>	<i>Gr'nsville Emporia</i>	<i>Lunenburg</i>	<i>Mecklenburg</i>	<i>Nottoway</i>	<i>Pr. Edward</i>
<u>Timely Enrollment</u>¹¹											
Total Due Since July 1, 2009	287	16	40	24	18	16	27	17	47	33	49
Cumulative % Timely Since July 1, 2009	94%	88%	95%	92%	100%	100%	93%	88%	98%	94%	94%
% Timely in December 2009	94%	100%	89%	89%	100%	100%	88%	80%	100%	86%	100%
<u>Work Activity 95 Days after Referral</u>¹²											
Total Possible Since July 1, 2009	221	12	31	23	23	11	23	10	36	19	33
Cumulative % Since July 1, 2009	97%	100%	100%	96%	100%	100%	96%	100%	100%	84%	97%
Percent in December 2009	98%	100%	100%	100%	100%	100%	88%	100%	100%	83%	100%
<u>Status of Waiting List for Enrollment</u>¹⁴											
# Over 30 Days	3	0	0	0	0	0	0	2	0	1	0
Average # of Days Over 30	24	0	0	0	0	0	0	27	0	19	0

EDD12 - Richmond Region: July 1, 2009 - December 31, 2009

	<i>Total EDD12</i>	<i>Chesterfield/ Col Hgts</i>	<i>Goochland</i>	<i>Hanover</i>	<i>Henrico</i>	<i>Powhatan</i>	<i>Richmond City</i>
<u>Timely Enrollment</u>¹¹							
Total Due Since July 1, 2009	1,264	242	10	56	389	2	565
Cumulative % Timely Since July 1, 2009	85%	90%	90%	93%	78%	100%	87%
% Timely in December 2009	81%	89%	100%	90%	71%	N/A	84%
<u>Work Activity 95 Days after Referral</u>¹²							
Total Possible Since July 1, 2009	964	201	4	32	274	8	445
Cumulative % Since July 1, 2009	94%	95%	100%	81%	95%	88%	94%
Percent in December 2009	94%	92%	100%	100%	98%	100%	92%
<u>Status of Waiting List for Enrollment</u>¹⁴							
# Over 30 Days	46	8	0	1	19	0	18
Average # of Days Over 30	28	39	0	11	23	0	30

EDD13 - Fredericksburg Region: July 1, 2009 - December 31, 2009

	<i>Total EDD13</i>	<i>Caroline</i>	<i>King George</i>	<i>Spotsylvania</i>	<i>Stafford</i>	<i>Fredericksburg</i>
<u>Timely Enrollment</u>¹¹						
Total Due Since July 1, 2009	324	77	5	120	77	45
Cumulative % Timely Since July 1, 2009	81%	68%	100%	79%	91%	91%
% Timely in December 2009	76%	50%	100%	79%	84%	94%
<u>Work Activity 95 Days after Referral</u>¹²						
Total Possible Since July 1, 2009	229	35	13	76	56	49
Cumulative % Since July 1, 2009	96%	100%	100%	92%	96%	96%
Percent in December 2009	91%	100%	100%	85%	90%	94%
<u>Status of Waiting List for Enrollment</u>¹⁴						
# Over 30 Days	23	17	0	4	2	0
Average # of Days Over 30	23	26	0	8	23	0

EDD14 – Northern Neck Region: July 1, 2009 - December 31, 2009

	Total EDD14	Essex	King & Queen	King William	Lancaster	Mathews	Middlesex	North- umberland	Richmond County	West- moreland
<u>Timely Enrollment¹¹</u>										
Total Due Since July 1, 2009	102	35	2	18	7	3	7	5	10	15
Cumulative % Timely Since July 1, 2009	87%	74%	50%	100%	100%	100%	100%	100%	80%	93%
% Timely in December 2009	93%	80%	88%	100%	100%	100%	100%	100%	100%	100%
<u>Work Activity 95 Days after Referral¹²</u>										
Total Possible Since July 1, 2009	78	20	5	8	7	1	9	3	10	15
Cumulative % Since July 1, 2009	96%	100%	80%	100%	100%	100%	89%	100%	90%	100%
Percent in December 2009	96%	100%	N/A	100%	100%	100%	100%	N/A	67%	100%
<u>Status of Waiting List for Enrollment¹⁴</u>										
# Over 30 Days	2	2	0	0	0	0	0	0	0	0
Average # of Days Over 30	11	11	0	0	0	0	0	0	0	0

EDD15 - Peninsula Region: July 1, 2009 - December 31, 2009

	Total EDD15	Charles City	Gloucester	James City	New Kent	York/Poq	Hampton	Newport News	Willmsburg
<u>Timely Enrollment¹¹</u>									
Total Due Since July 1, 2009	765	2	24	29	15	36	242	399	18
Cumulative % Timely Since July 1, 2009	94%	50%	100%	97%	100%	100%	98%	91%	89%
% Timely in December 2009	92%	100%	100%	91%	N/A	100%	100%	87%	67%
<u>Work Activity 95 Days after Referral¹²</u>									
Total Possible Since July 1, 2009	628	0	26	25	8	22	164	367	16
Cumulative % Since July 1, 2009	92%	N/A	88%	100%	100%	86%	96%	89%	100%
Percent in December 2009	90%	N/A	91%	100%	100%	73%	96%	88%	100%
<u>Status of Waiting List for Enrollment¹⁴</u>									
# Over 30 Days	13	0	0	1	0	0	4	6	2
Average # of Days Over 30	33	0	0	7	0	0	74	9	40

EDD16 - Petersburg Region: July 1, 2009 - December 31, 2009

	<i>Total EDD16</i>	<i>Dinwiddie</i>	<i>Prince George</i>	<i>Surry</i>	<i>Sussex</i>	<i>Hopewell</i>	<i>Petersburg</i>
<u>Timely Enrollment</u>¹¹							
Total Due Since July 1, 2009	308	11	16	16	24	84	157
Cumulative % Timely Since July 1, 2009	83%	100%	94%	88%	92%	65%	89%
% Timely in December 2009	88%	100%	100%	100%	100%	71%	90%
<u>Work Activity 95 Days after Referral</u>¹²							
Total Possible Since July 1, 2009	219	28	17	12	12	55	95
Cumulative % Since July 1, 2009	93%	100%	94%	100%	100%	98%	85%
Percent in December 2009	96%	100%	80%	100%	100%	100%	94%
<u>Status of Waiting List for Enrollment</u>¹⁴							
# Over 30 Days	4	0	0	0	0	1	3
Average # of Days Over 30	22	0	0	0	0	1	29

EDD17 - Tidewater Region: July 1, 2009 - December 31, 2009

	<i>Total EDD17</i>	<i>Isle of Wight</i>	<i>South- hampton</i>	<i>Chesapeake</i>	<i>Franklin City</i>	<i>Norfolk</i>	<i>Portsmouth</i>	<i>Suffolk</i>	<i>VA Beach</i>
<u>Timely Enrollment</u>¹¹									
Total Due Since July 1, 2009	1,373	36	26	254	7	442	282	89	237
Cumulative % Timely Since July 1, 2009	89%	92%	96%	93%	86%	77%	96%	99%	97%
% Timely in December 2009	95%	86%	100%	98%	100%	86%	99%	100%	96%
<u>Work Activity 95 Days after Referral</u>¹²									
Total Possible Since July 1, 2009	1067	27	27	180	24	295	217	95	202
Cumulative % Since July 1, 2009	92%	93%	100%	92%	96%	85%	96%	97%	94%
Percent in December 2009	92%	80%	100%	92%	86%	90%	97%	100%	91%
<u>Status of Waiting List for Enrollment</u>¹⁴									
# Over 30 Days	3	1	0	0	0	0	2	0	0
Average # of Days Over 30	6	8	0	0	0	0	5	0	0

Child Support Enforcement - Statewide Totals

Collections

	<i>Dec-08</i>	<i>Dec-09</i>	<i>% Change</i>
TANF Cases Collected	13,794	14,298	3.7%
NTANF Cases Collected	127,579	126,564	-0.8%
Total Cases Collected	141,373	140,862	-0.4%
TANF Collections	\$2,536,129	\$2,607,753	2.8%
NTANF Collections	\$48,633,857	\$48,060,128	-1.2%
Total Collections	\$51,169,986	\$50,667,881	-1.0%
SFY YTD Collections	\$305,834,460	\$295,890,856	-3.3%
SFY YTD Average Collection	\$356	\$348	-2.1%

Paternities Established

	<i>Dec-09</i>
TANF Paternities	237
NTANF Paternities	344
Combined Paternities	581

Diversionsary Assistance

December Diversionsary Assistance Cases

Locality	Number of Cases		Locality	Number of Cases
Albemarle	3		Orange	4
Alleghany / Covington	2		Page	1
Amelia	1		Patrick	3
Amherst	1		Pittsylvania	3
Appomattox	1		Prince William	5
Augusta / Staunt'n / W'boro	15		Pulaski	3
Bedford City	4		Roanoke County	11
Buckingham	6		Rockbridge / BV / Lexington	3
Campbell	1		Rockingham / H'burg	9
Caroline	1		Shenandoah	15
Charlotte	1		Smyth	1
Chesterfield/Colonial Hgts	25		Spotsylvania	17
Clarke	1		Stafford	21
Culpeper	3		Surry	1
Cumberland	1		Warren	7
Dickensen	1		Washington	1
Dinwiddie	3		Westmoreland	1
Fairfax / Falls Church	1		Wise	1
Fauquier	2		York / Poquoson	3
Floyd	5		Bristol	2
Franklin County	6		Charlottesville	4
Frederick	8		Chesapeake	3
Gloucester	3		Danville	1
Goochland	1		Franklin City	2
Grayson	2		Fredricksburg	1
Greene	5		Galax	3
Halifax	2		Hampton	9
Henrico	10		Hopewell	4
Henry / Martinsville	9		Lynchburg	1
Isle of Wight	4		Mannassas	2
King William	1		Newport News	26
Loudoun	2		Norfolk	30
Louisa	1		Richmond City	8
Lunenburg	2		Roanoke City	13
Madison	1		Suffolk	16
Montgomery	2		Virginia Beach	4
New Kent	1		Winchester	2
			Statewide	379

Definitions of Selected Terms Contained in Report

Average Monthly Earnings. This is the average monthly earnings of the unsubsidized jobs that participants obtained. The value is calculated by multiplying the hourly wage by the weekly hours worked by 4.3 average weeks per month. For the cumulative figures the initial wage and initial hours are used. For the current figures, the initial wage and most current hours are used, except for the November 2001 report which used initial hours. Earlier than June 1999, wage changes that were entered overwrote the initial wage, so prior to that date, the cumulative figures used the initial hours and the last wage entered. With the advent of the VIEW Transitional Payment (VTP) program in October 2006 the end of month average monthly earnings might be expected to decline somewhat because prior to VTP, cases with high earnings might remain open for job follow-up, but after the implementation of VTP the VIEW case would be closed when the TANF case was closed and a VTP case opened. VTP cases are not included in this report except for estimating the participation rate.

Average Wage. The average of the wages reported for each occurrence of unsubsidized employment. After June 1999 the wage is the wage at hiring, that is, the initial wage. Prior to June 1999, that wage may have been updated if changed during employment. After the implementation of the VIEW Transitional Payment program the end of month point in time average wage might be expected to decline some for the same reason mentioned in the explanation of possible decline in Average Monthly earnings, above. See note 6 on page 44.

Cases Closed with Employment. These are TANF or TANF-UP cases that are closed with an indication in the data base of employment at the date of closure. It does not mean that the case necessarily closed because of employment. For example, a TANF case may have an indication of closing at the client's request, along with indication of existing employment in VIEW. That case is counted as closed with employment.

EDD. This stands for Economic Development District. EDDs were developed during the administration of Governor Allen. They generally are no longer in use. This report continues to refer to them because VIEW was phased in by EDD and their use provides consistency over time.

Enrolled. Unduplicated number by locality of TANF recipients who were interviewed, received an individual assessment, signed the Agreement of Personal Responsibility, and enrolled in the VIEW program. Because the count is by locality, a recipient may be counted once in more than one locality. The fiscal year to date numbers include those who were enrolled at the beginning of the fiscal year as well as those enrolled during the year. There are clients enrolled in VIEW who have had their TANF case closed because VIEW policy requires that the enrollment remain open for job follow-up after employment unless the employment meets federal work participation guidelines, in which case the VIEW case is closed and a VIEW Transitional Payment (VTP) case is opened.

Full Time Employment. Employment at 30 hours a week or greater.

Participants Assigned to Inactive. Inactive is a status assigned to participants who cannot participate in the VIEW program for reasons other than being exempt. Examples are unavailability of child care, unavailability of transportation, and mental or medical problems that make participation impractical. Inactive participants are due to be reviewed each month. While in inactive status, the 24 month time limit for TANF benefits is suspended.

Participants Employed. Total number of participants by locality who ever obtained an unsubsidized job, either full time or part time. If employed more than one time, they are still only counted once, but may be counted in more than one locality. Also, these participants may have left their job and not gotten another one. For the year to date numbers, those employed at the beginning of the fiscal year are included as well as those who first became employed in the fiscal year.

Participants in a Work Activity. Unduplicated count by locality of persons who have been in any of the following components: unsubsidized employment, full employment program (FEP), on-the-job training (OJT), community work experience program (CWEP), public service program (PSP), vocational education and training, and job search/job readiness. For example, a person who was in community work experience and then employed would be counted only once.

For the year to date numbers, those in a work activity at the beginning of the fiscal year are included as well as those who first entered a work activity in the fiscal year. Note that this is a revised definition of work activity from reports through October 2006. The revised definition captures the activities that count toward the first 20 hours of federal participation requirements – the core work activities. Clients who are counted as being in a core work activity must meet additional participation rate requirements in order to be included in the work participation rate, and only VIEW clients are counted here, not all work eligible TANF clients **Thus, these percentages in a work activity are quite different from the percentages in the TANF work participation rate.**

Part Time Employment. Employment at fewer than 30 weekly hours.

Referred. Unduplicated number of TANF recipients by locality who were initially evaluated as eligible for VIEW and had their names referred to the automated VIEW list for participation.

Relationship Between TANF and VIEW Participation. On the chart at page 5a, the column heading “Total Adults in the Case” includes adults who are not considered to be part of the assistance unit. For example, a mother receiving SSI may be in the case, but because she receives SSI is not considered eligible for TANF and thus is not part of the assistance unit. Persons such as she who are not in the assistance unit are not eligible to participate in VIEW. Also included are adults who are part of the assistance unit but exempt from VIEW

Five Months Employment. This represents the percent of all participants that were employed 150 days after their first employment. Participants who are employed in any job 150 days after their first employment are counted in this measure.

Three Months Employment. This represents the percent of all participants that were employed 90 days after their first employment. Participants who are employed in any job 90 days after their first employment are counted in this measure. For year to date percents, the calculations are based on the first employment that began one year before the end of the report month. That employment may not have been the first ever for the participant. The year to date percents were calculated differently in reports before September 2004. Also for year to date percents, transferred cases were not counted for months after the January 2002 report.

TANF / TANF-UP Payment Cases. Up to November 2003 these counts were taken from a monthly report with no adjustment. After that, the monthly counts included some cases that were being paid because child support payments had been received and were being passed on. These counts were adjusted to mostly eliminate those additional cases. Further adjustment may be appropriate. It should also be noted that the counts include both strictly TANF cases and MOE cases for some years. With the end of waiver provisions in July 2003, a substantial part of the caseload was placed in a state program and funded with MOE funds. This change in July 2003 was a change in funding, not a change in eligibility requirements or case payment amounts. It ended in September 2006 when VIEW transitional payments (VTP) were introduced. Adjustments have been made to take out VTP cases. Also, TANF-UP cases are currently funded with only state monies.

VIEW Transitional Payments (VTP). Beginning in October 2006, VIEW Transitional Payments (VTP) were introduced. These are payments of \$50 per client per month for one year to VIEW clients that leave “regular” TANF with employment sufficient to meet Federal work participation requirements. The employment must be maintained to be eligible for VTP. Previously, VTP clients normally would have remained VIEW clients for five or six months of job-follow-up. Thus, the VTP program has had a diminishing effect on some of the statistics in this report such as end of month percent employed and average wage. See graph on page 5a.

Time That Data Represent. The data in the top sections of page 4 and pages 8 – 24 are point in time data as of the date indicated. The year to date section represents state fiscal year to date data, with the exception of three month retention (see above). The bottom section is cumulative from when the locality began VIEW.

General Statement About Accuracy. The report is based on an extract from the Employment Services automated system. The extract is normally made the night of the first work day after the end of the report month. Data that staff of local social services agencies enter into the automated system after the time of the extract are not included in the report, even though the activity reflected actually occurred in the report month. However, that data, and the activity reflected, are included in the reports for subsequent months. Further, because the data are entered by staff in the 120 localities, the accuracy of the data in the data base is, of course, subject to inadvertent error.

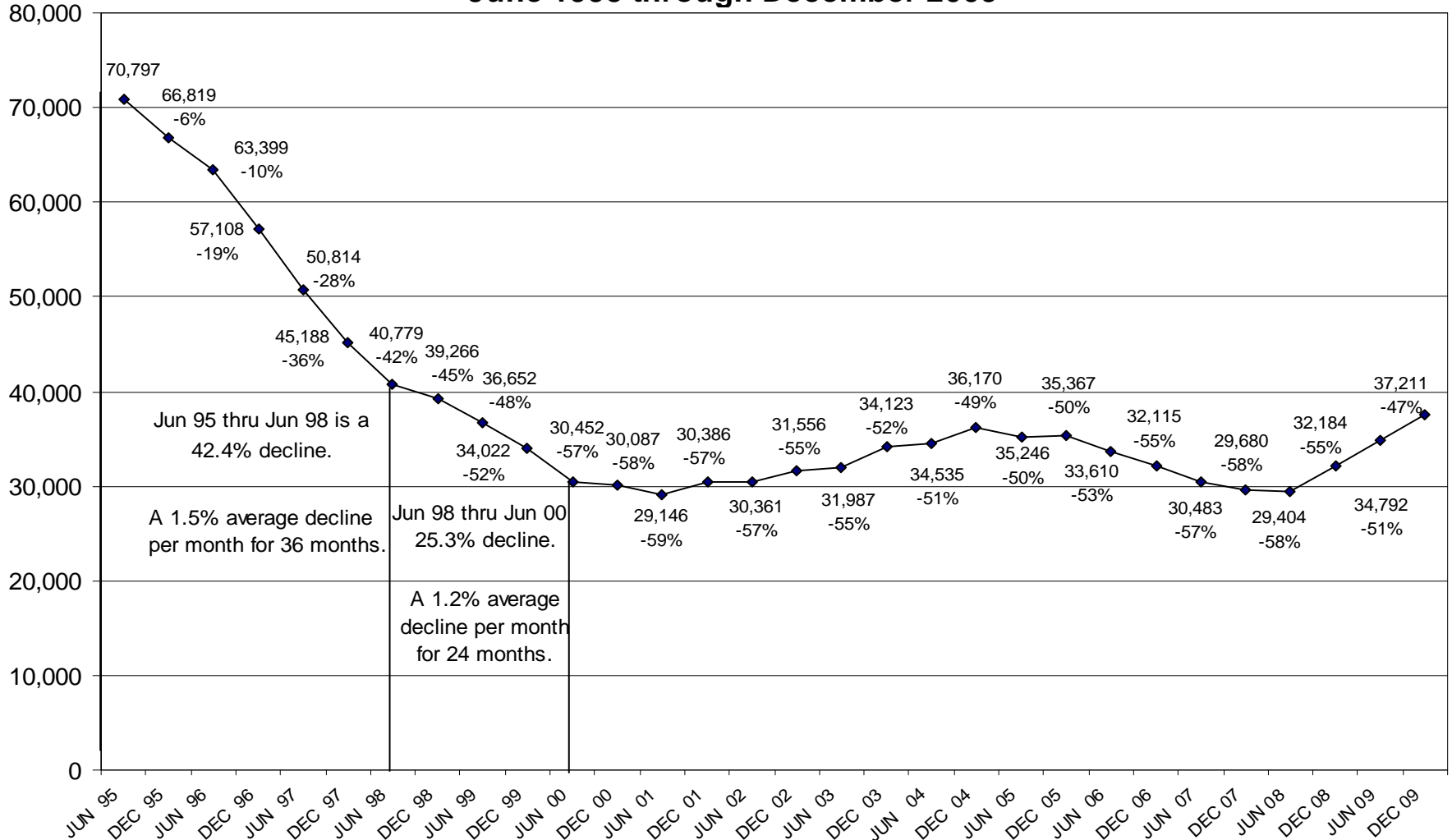
- ¹ Applications are not necessarily acted upon in the month that they are received. Also, applications may be transferred from regular TANF to TANF-UP and vice versa as they are processed.
- ² These TANF cases paid counts are prior to possible adjustment. See definition of payment cases. Note that a VIEW case may remain open for job follow-up after the corresponding TANF case closes.
- ³ VIEW enrolled counts do not include VTP clients
- ⁴ A case may be open in more than one locality during the time period.
- ⁵ Prior to June 1999, when individuals were transferred from one locality to another, their history was transferred as well. This may have an effect on a locality's cumulative VIEW statistics.
- ⁶ The minimum wage rose from \$6.55 to \$7.25 an hour on 7/24/09. The report reflects initial wages so some effect on wages in the report was delayed. The average wage includes full and part time, unless otherwise indicated. See the definition of average wage on page 42.
- ⁷ Includes full and part time earnings.
- ⁸ This represents the percent of all participants that were first employed three months or more before the end of the report month and who were employed three months after the date of that employment. Employment may or may not have been continuous. See definition on page 43 for the revised method of calculating the year to date percentages.
- ⁹ This represents the percent of all participants that were first employed five months or more before the end of the report month and who were employed five months after the date of that employment. Employment may or may not have been continuous.
- ¹⁰ Number includes TANF-UP and represents cases carried over to the next month. Note that a VIEW case may remain open for job follow-up after the corresponding TANF case closes, but with the advent of VIEW Transitional Payments (VTP) such occurrences were reduced from earlier months.
- ¹¹ Enrollment is timely if done within 30 days of referral in previous month of the state fiscal year. The monthly percent includes evaluation of clients waiting in the queue. The year to date does not.
- ¹² Placement in a work activity on the 95th day after referral was a measure of timeliness before Oct 1, 2006. The revised definition of work activity has increased the percentage from reports before November 2006. Clients whose cases have closed before the 95th day are excluded, so 100% is an attainable mark
- ¹⁴ As of morning of January 4, 2010. Some referrals to the waiting list are not appropriate, and there may be considerable lag time in correcting them..

This report is available on the Department of Social Services web site at:
http://www.dss.virginia.gov/geninfo/reports/financial_assistance/tanf.cgi

The scores in the VIEW Rankings are determined by placing a locality on a scale of zero to ten in the same relative position as its place in the difference between the high and low of the measure in question. This converts all measures to a similar scale and provides a more equitable way to combine the ratings in each measure to determine a combined rank. (Questions, please call 804 726-7618.)

Comments on the format or content of the report may be sent by e-mail to:
william.mcmakin@dss.virginia.gov

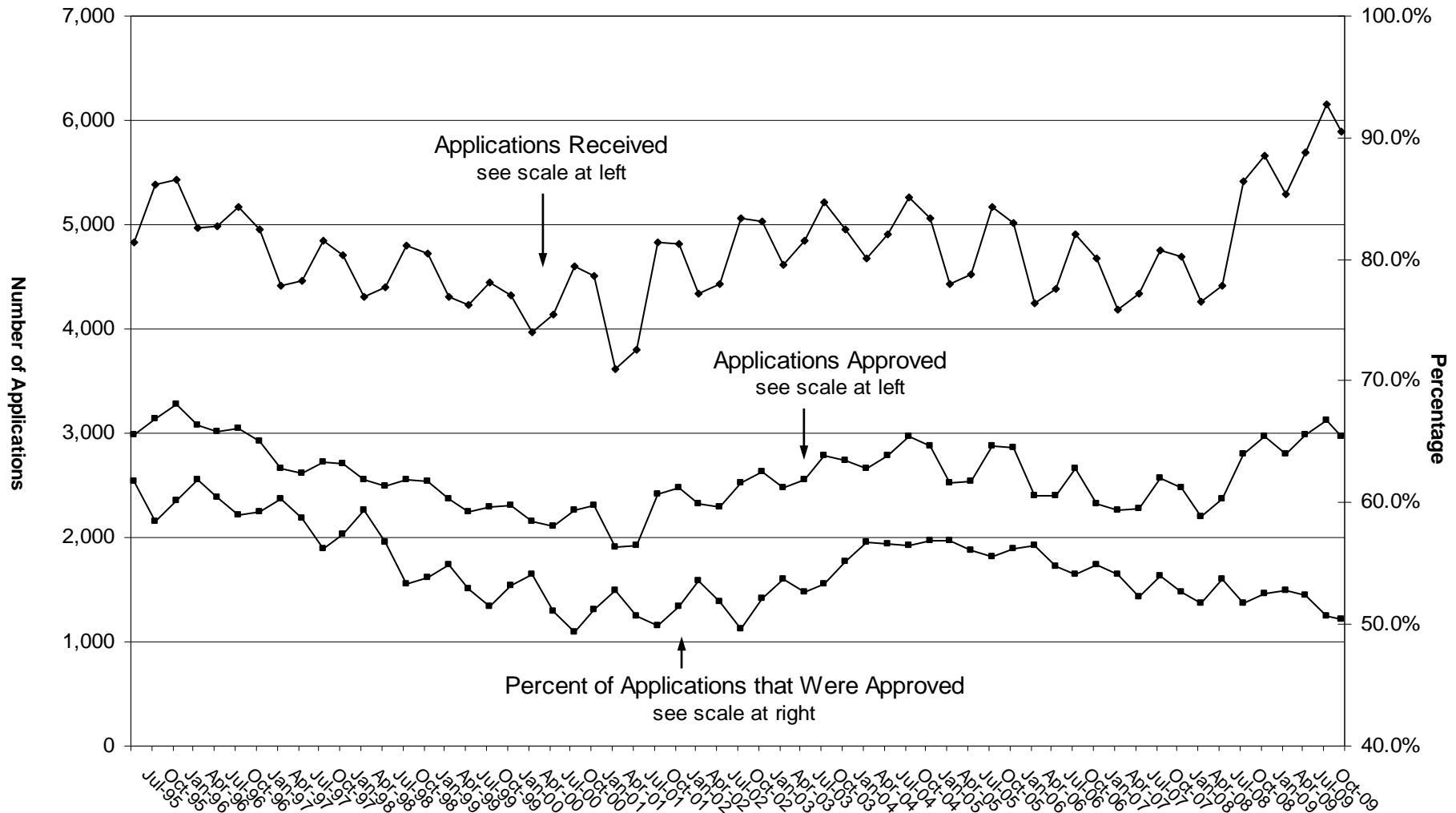
TANF and TANF-UP Cases Paid at Six Month Intervals, except last month June 1995 through December 2009



This graph illustrates the dramatic decline of the TANF caseload as VIEW was implemented. There was some sign of slowing in the rate of decline after June 1998. Nevertheless, wide community involvement, a strong economy, and the effect of the 24 month rule allowed the caseload to continue to fall until it was near the 30,000 level. There was little net change in the caseload from June 2000 to June 2002, but some upward movement was seen after June 2002, until 2005. The more recent increase is presumed to be a result of economic conditions. Information for this graph was taken from the Case Activity tables on page one of this report and reports of previous months.

Applications Received with Approval Percentage

Six Month Asymmetrical Moving Averages by Quarter, July 1995 through December 2009

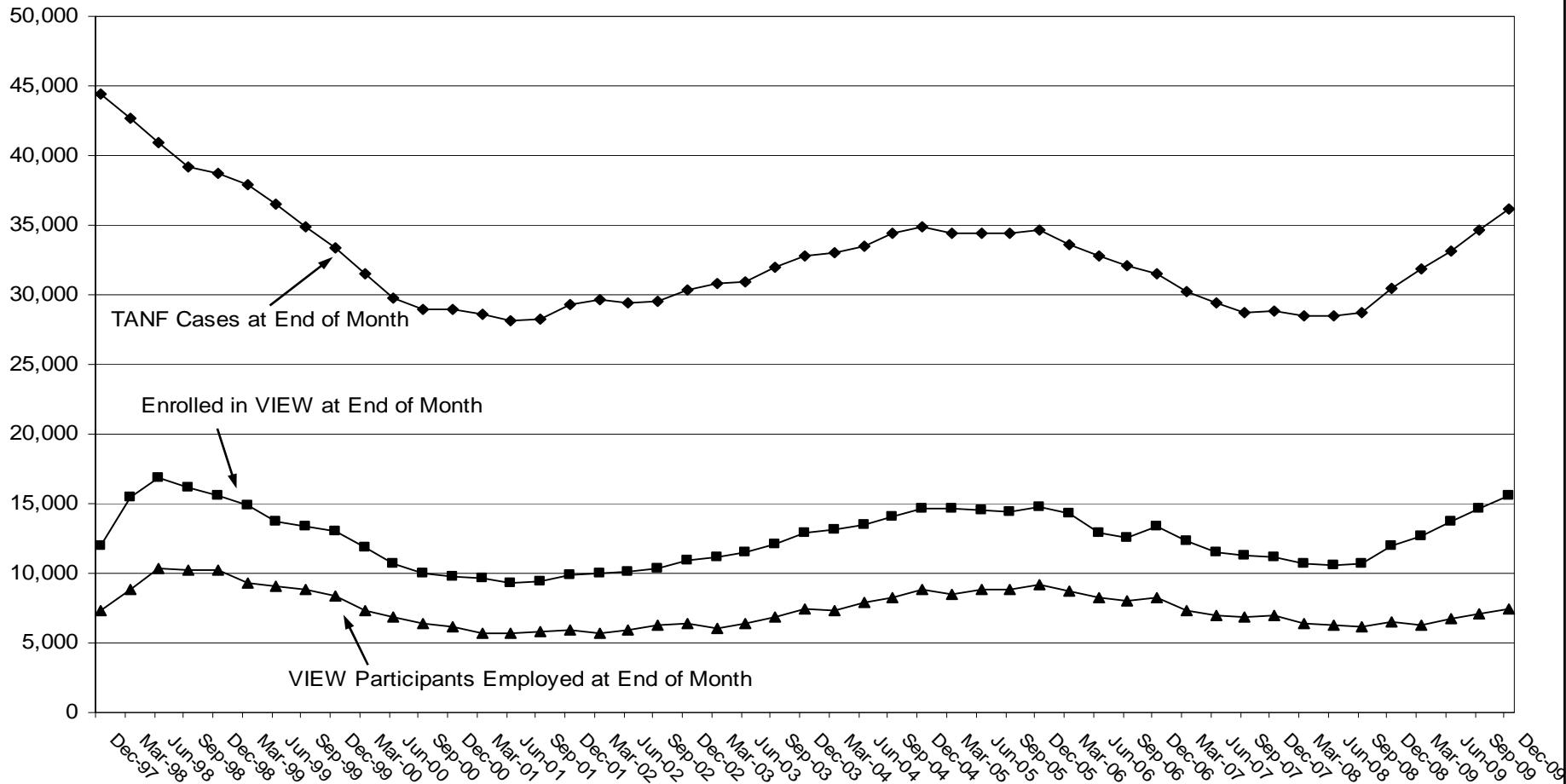


This graph of application activity is presented as six month moving averages to produce smoother lines from which trends may be seen and in recognition that applications are not always acted on in the month received. The trends are not dramatic, but there seems to have been a general decline in the number of applications received until the July 2001 data. The decline in applications received after December 2004 and the recent increase appear to be reflected in the case load trends.

Information for this graph was taken from the Case Activity tables on page one of this report and reports of previous months.

TANF Cases, VIEW Enrolled, and Employed VIEW Participants

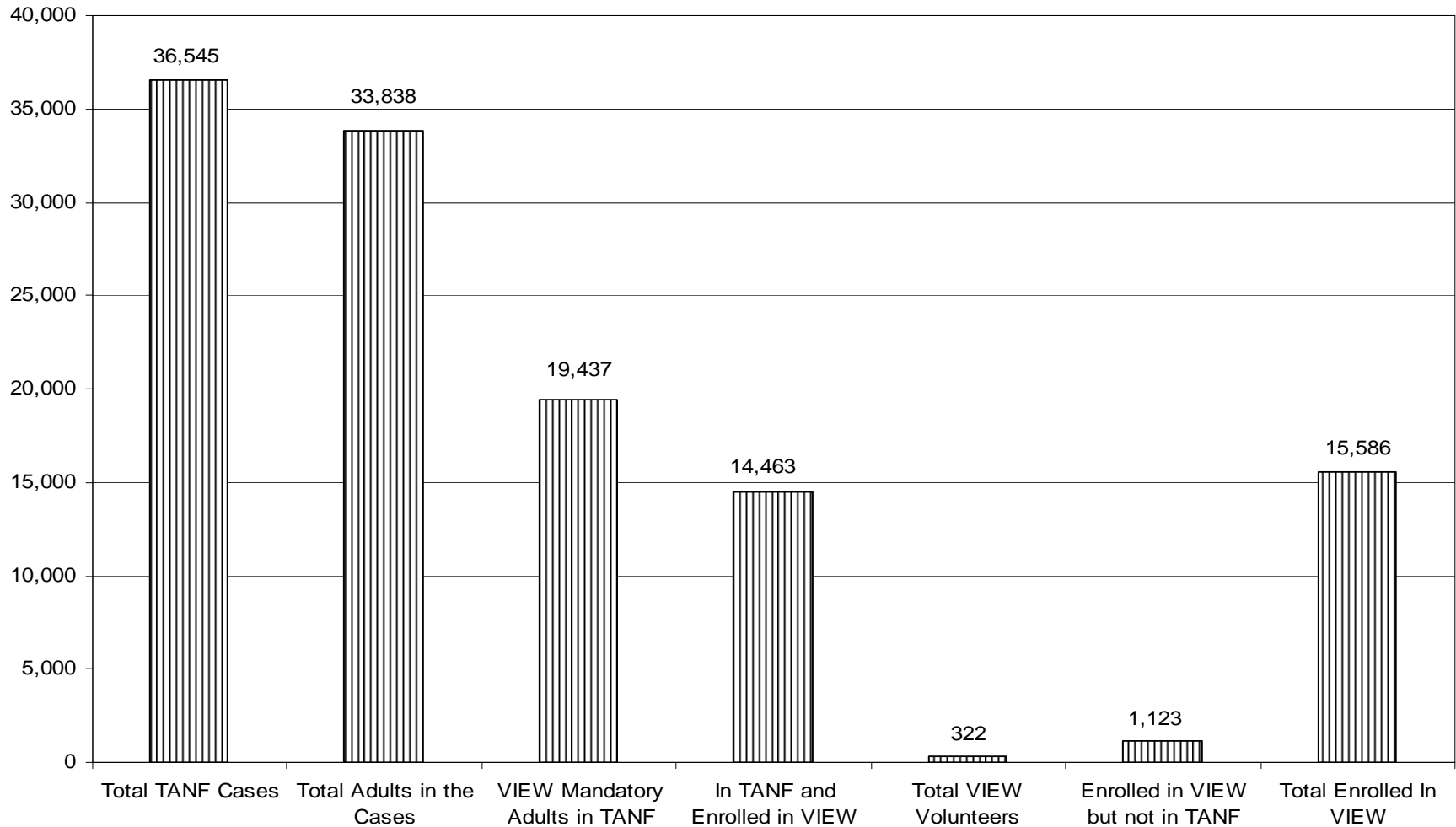
Beginning in October 1997, the Month of VIEW Implementation Statewide
Asymmetrical Three Month Moving Averages. December is the last month



This graph shows that the number enrolled in VIEW increased during early implementation and then generally tracked the number of cases. The effects of the recent economic conditions are apparent. A VIEW case may remain open for five to six months or more after the TANF case closes, if job follow-up is being done and the case has not been converted to the VIEW Transitional Payment program. It is unlikely that the number employed will ever equal the number enrolled because there are always new enrollees without employment, and there are some enrollees in work activities, other than employment, that meet VIEW requirements. Information for this graph was taken from the Statewide Work Activity tables on page four of this report and reports of previous months. It includes TANF-UP

Chart Displaying the Relationships Between TANF and VIEW Participation

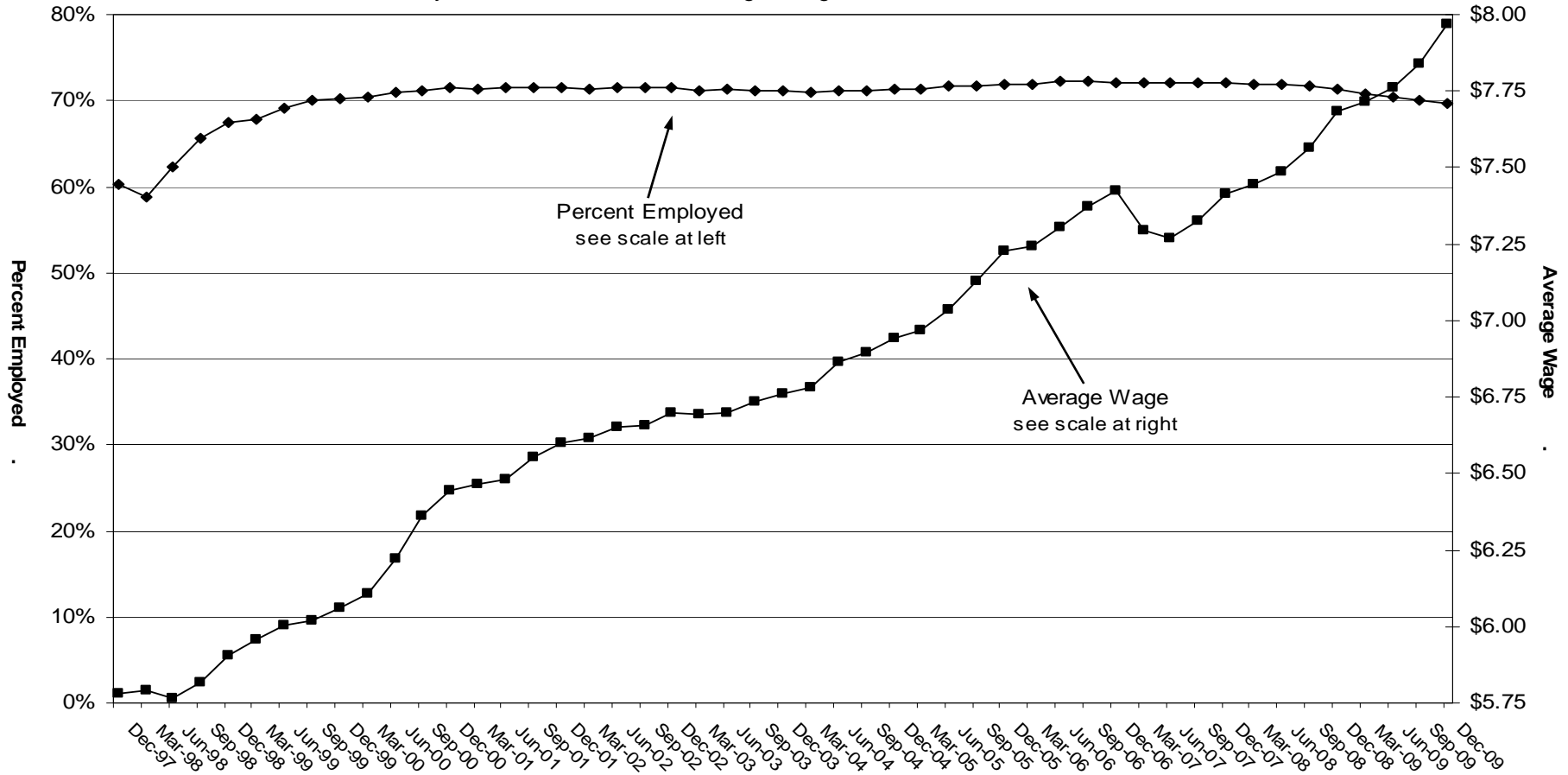
December 31, 2009



This chart illustrates that there are a large number of adults who are exempt from VIEW and that many of the VIEW enrollees have had their TANF cases closed. They are now in a job follow-up phase of VIEW. They have not had their VIEW case closed and become enrolled in the VIEW Transitional Payment program. The source of this information is a monthly TANF extract from ADAPT and the monthly extract from ESPAS, the VIEW automated data system. The extracts were made at the beginning of January and represent end of December data. TANF-UP is included.

VIEW Percent Total Employed and Average Wage at End of Month

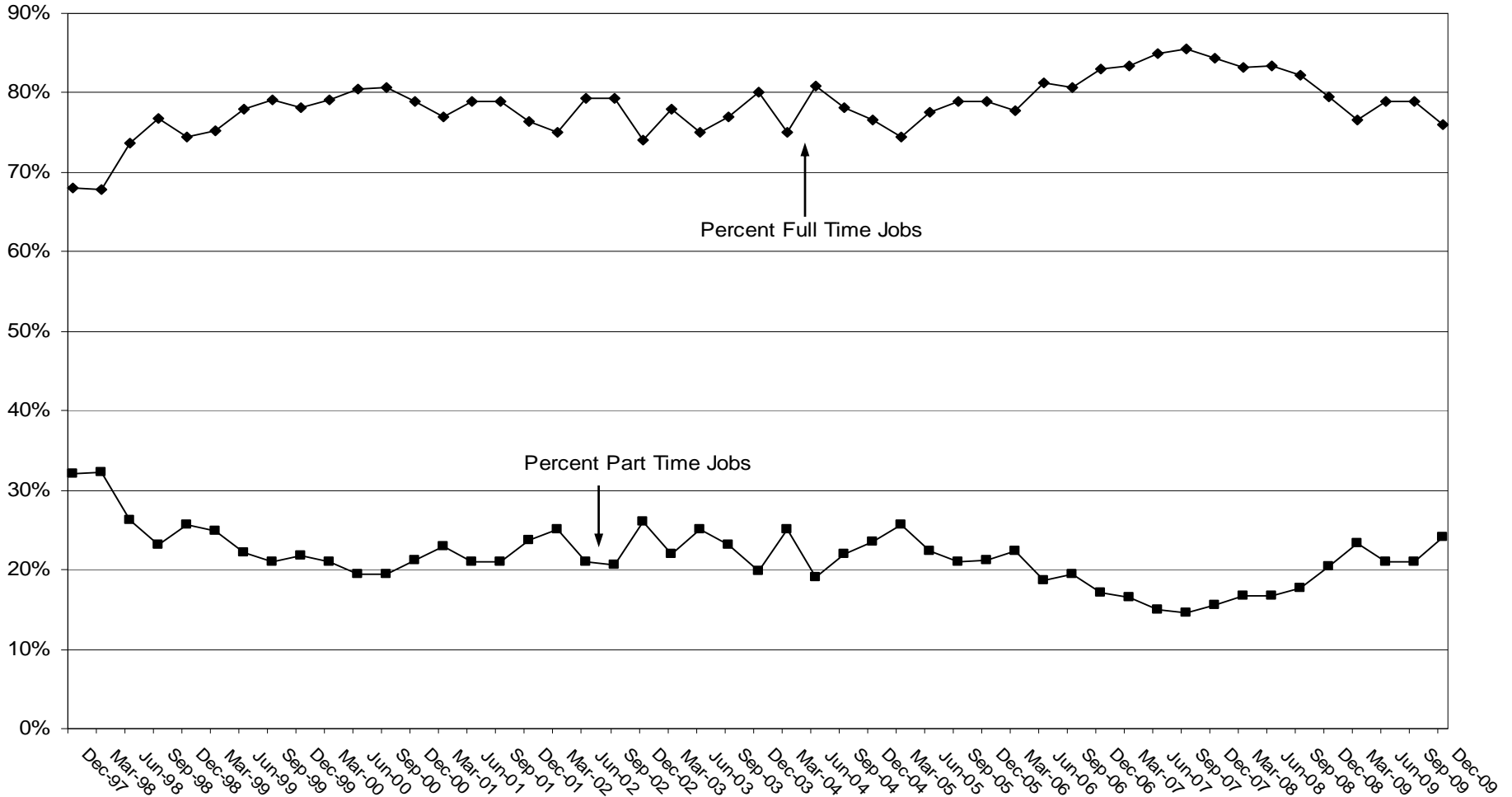
Beginning in October 1997, the Month of VIEW Implementation Statewide
Asymmetrical Three Month Moving Averages. December is the last month



This graph shows that the average wage has seen a general increase as the percent of VIEW employed initially increased and then leveled. Besides employment, VIEW participants may be in various other activities or initial assessment and job search. It is unlikely that the percent employed will rise more, and the recent economic conditions may have caused a decline. The wages shown are generally the initial wages. When the average wage was calculated at about the end of December, it was \$8.15 rather than the \$7.98 initial wages used to calculate wages shown on this graph. See page 42 of the report for an explanation of why the VIEW average wage might decline after October 2006 and note 6 on page 44 for the effect of the increase in minimum wage. Information for this graph was taken from the Statewide Work Activity tables on page four of this report and reports of previous months.

Percent of Jobs Found During a Month That Were Full Time and Percent Part Time

Beginning in October 1997, the Month of VIEW Implementation Statewide
 Asymmetrical Three Month Moving Averages. December is the last month



This graph illustrates an initial trend of VIEW participants obtaining a greater percent of full time jobs than part time. After the initial months, the trend seems to be fairly level with an increase in the percent full time after TANF reauthorization which probably reflects increased emphasis on meeting the required TANF work participation rate. The more recent apparent reversal of that trend is presumed to be a result of economic developments. Information for this graph was taken from the Statewide Work Activity tables on page four of this report and reports of previous months.