

**DEPT. OF SOCIAL SERVICES-PAYMENTS AND AVERAGE GRANTS FOR WELFARE PROGRAMS**

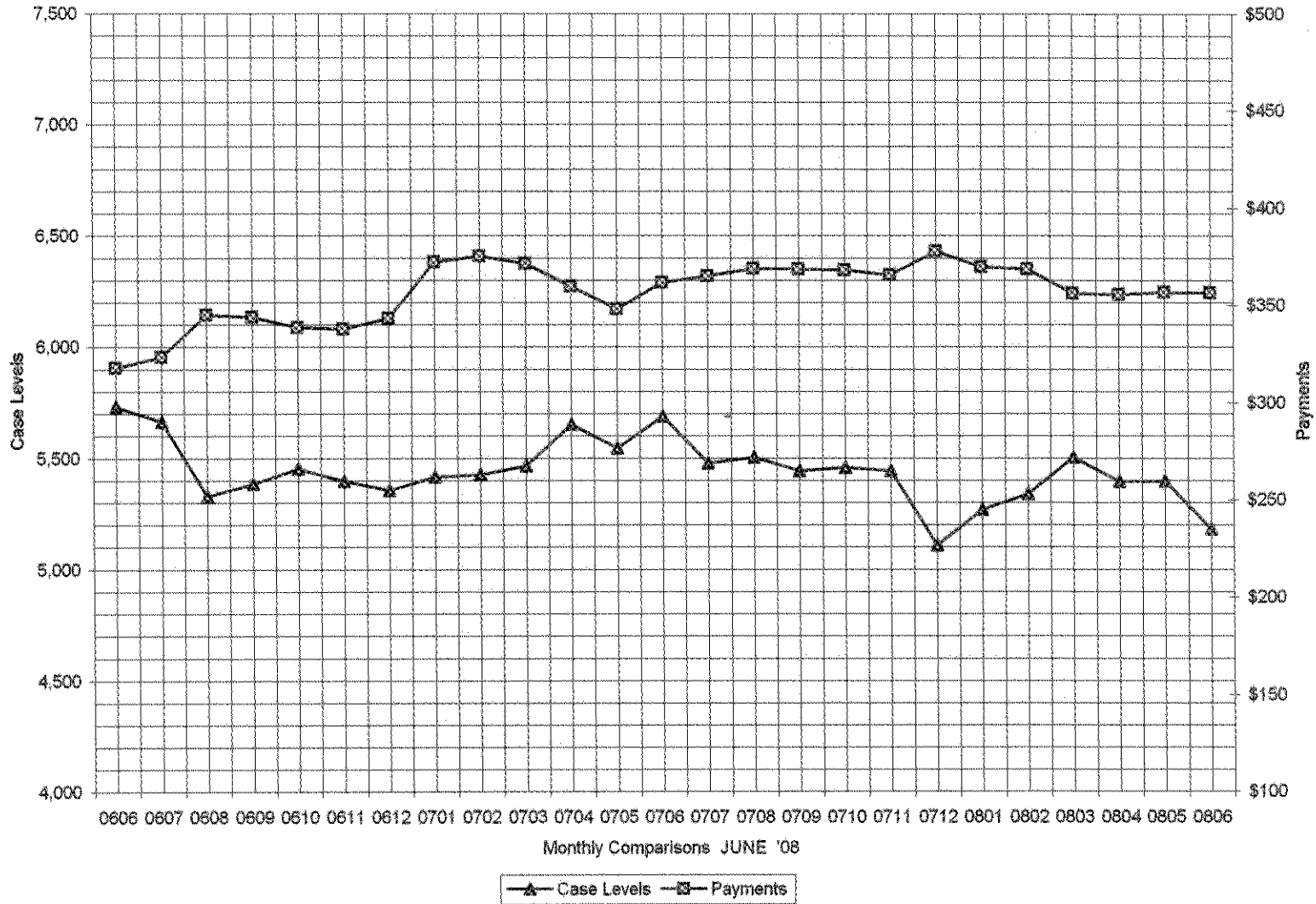
	JUNE '08	MAY '08	INC./DEC. PRI MON	% DIFF PRI MON	**YTD TOTAL	JUNE '07	INC/DEC PRIOR YR.	% INC/DEC PRIOR YR.
<b>AUXILIARY GRANTS PROGRAMS</b>								
RECIPIENTS	5,182	5,398	216	4%	64,516	5,687	(289)	-5%
PAYMENTS	\$1,847,279	\$1,925,748	\$78,468	4%	\$23,527,940	\$2,057,192	(\$131,444)	-6%
AVERAGE GRANT	\$356	\$357	\$0	0%	\$365	\$362	(\$5)	-1%
<b>ADULT FAMILY CARE</b>								
RECIPIENTS	11	12	(1)	-8%	144	15	(3)	-20%
PAYMENTS	\$4,138	\$4,133	\$5	0%	\$49,796	\$4,474	(\$342)	-8%
AVERAGE GRANT	\$376	\$344	\$32	9%	\$346	\$298	\$78	26%
<b>TEMPORARY ASSISTANCE FOR NEEDY FAMILIES</b>								
RECIPIENTS-TOTAL	65,160	65,663	(503)	-1%	977,260	67,588	(1,913)	-3%
TANF	61,013	61,344	(331)	-1%	753,534	63,568	(2,222)	-3%
TANF-UNEMPLOYED PARENTS	4,147	4,319	(172)	0%	223,726	4,020	299	7%
1/EMERGENCY ASSISTANCE	4	10	(6)	-67%	71	2	8	400%
PAYMENTS-TOTAL	\$8,664,159	\$8,653,207	\$10,953	-1%	\$105,160,754	\$8,960,357	(\$307,150)	-3%
TANF	\$8,195,800	\$8,178,470	\$17,330	-1%	\$99,414,656	\$8,516,838	(\$338,368)	-4%
TANF-UNEMPLOYED PARENTS	\$467,154	\$473,239	(\$6,084)	-3%	\$5,723,953	\$442,163	\$31,075	7%
EMERGENCY ASSISTANCE	\$1,205	\$1,498	(\$293)	-56%	\$22,145	\$1,356	\$142	10%
AVERAGE GRANT-TOTAL	\$133	\$132	\$1	-1%	\$108	\$133	(\$1)	-1%
AVERAGE MONEY PAYMENTS	\$134	\$133	\$1	-1%	\$132	\$134	(\$1)	0%
AVERAGE TANF-UNEMPLOYED PARENTS	\$113	\$110	\$3	-3%	\$26	\$110	(\$0)	0%
AVERAGE EMERGENCY ASSISTANCE	\$301	\$150	\$152	31%	\$312	\$678	(\$528)	-78%
<b>TITLE IV-E</b>								
ADOPTION SUBSIDY- RECIPIENTS	4,113	4,548	(436)	-10%	51,825	4,128	421	10%
ADOPTION SUBSIDY - PAYMENTS	\$2,361,771	\$2,593,177	(\$231,406)	-9%	\$29,638,960	\$2,119,535	\$473,642	22%
AVERAGE ADOPTION SUBSIDY	\$574	\$570	\$4	1%	\$572	\$513	\$57	11%
<b>SPECIAL NEEDS ADOPTION</b>								
SPECIAL NEEDS ADOPTION - RECIPIENTS	3,739	3,838	(99)	-3%	45,440	3,784	74	2%
SPECIAL NEEDS ADOPTION - PAYMENTS	\$2,631,069	\$2,908,544	(\$75,476)	-3%	\$34,012,528	\$2,952,660	(\$46,116)	-2%
AVERAGE SPECIAL NEEDS ADOPTION	\$757	\$757	(\$0)	0%	\$749	\$784	(\$27)	-3%
<b>GENERAL RELIEF</b>								
PAYMENTS-TOTAL	\$411,780	\$414,204	(\$2,424)	-1%	\$5,609,342	\$393,846	\$20,359	5%

1/ INCLUDES 4 RECIPIENTS IN JUNE AND 10 IN MAY WHO ALSO REC'D MONEY PAYMENTS

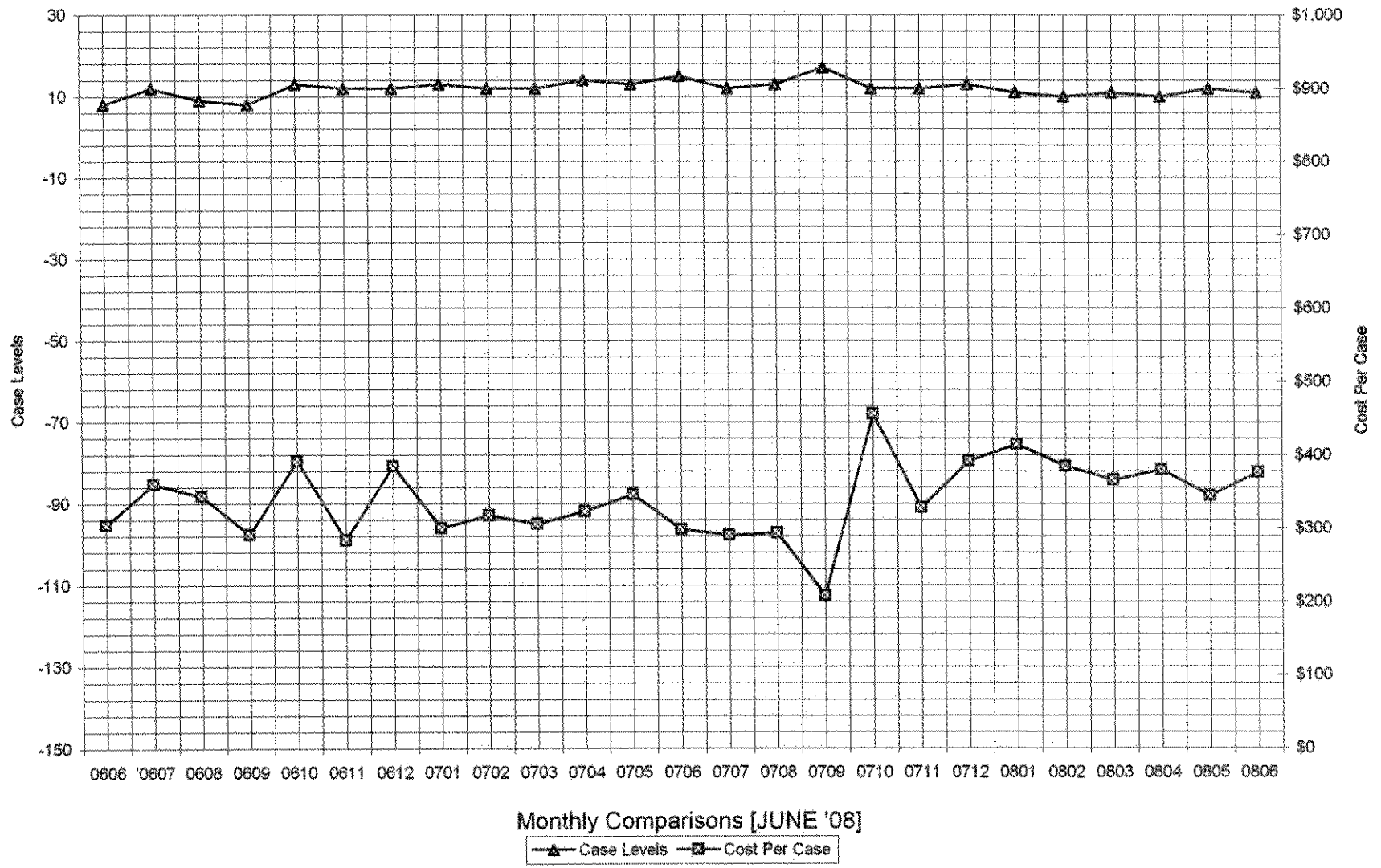
\*\* YEAR TO DATE TOTAL: THE RECIPIENT FIGURES DO NOT REPRESENT TRUE COUNTS AS THE RECIPIENTS ARE GENERALLY THE SAME EVERY MONTH. THE YEAR TO DATE DOLLAR FIGURES ARE ACCURATE.

General Disclaimer: Unless specifically stated otherwise, case count numbers indicated in this report(s) stem from amounts entered by local personnel into applicable ADAPT and LASER systems; therefore, all reviewers/users of this report understand that the accuracy of such case count numbers is contingent on the respective numbers entered by local personnel. Any subsequent liabilities associated with incorrect amounts being entered into the noted systems rests solely with each locality. Effective March 2008 a difference method of calculating TANF & TANF-UP information was established.

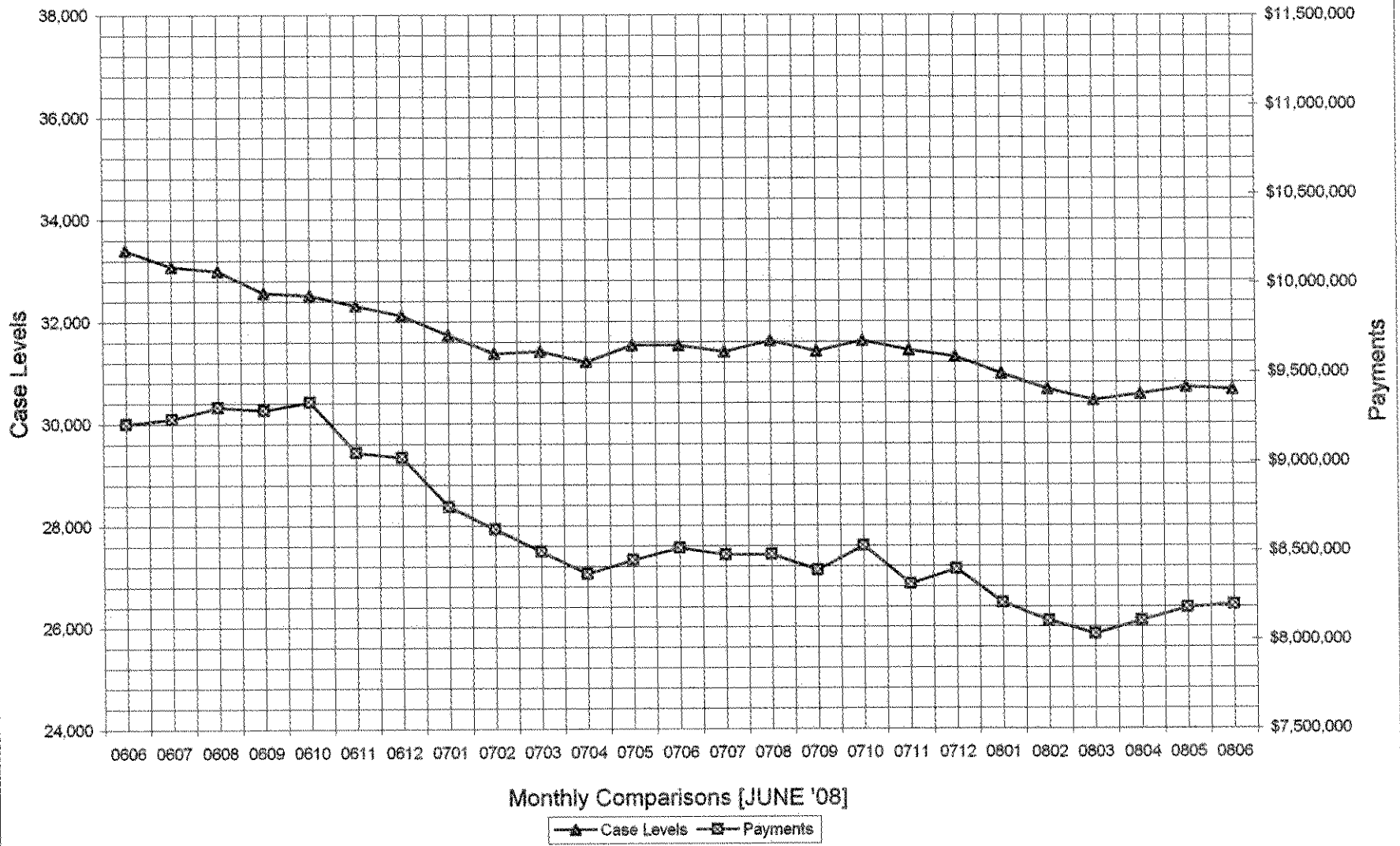
### Auxiliary Grants Programs Cases & Payments



### Adult Family Care Cases vs Cost-Per-Case



### TANF Cases & Payments



# GENERAL RELIEF Payments

