

DEPT. OF SOCIAL SERVICES-PAYMENTS AND AVERAGE GRANTS FOR WELFARE PROGRAMS

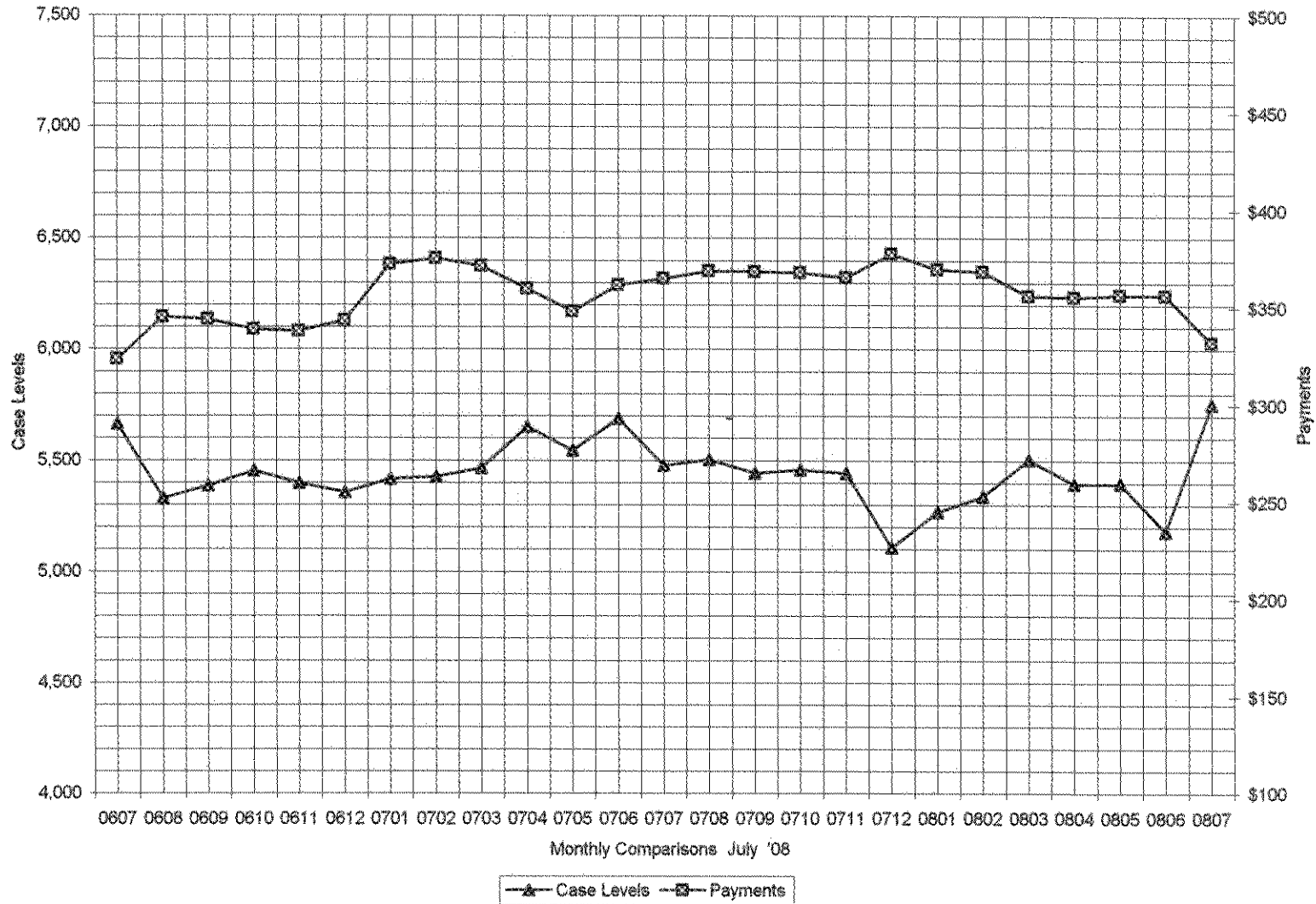
	JULY '08	JUNE '08	INC./DEC. PRI MON	% DIFF PRI MON	**YTD TOTAL	JULY '07	INC/DEC PRIOR YR.	% INC/DEC PRIOR YR.
<b>AUXILIARY GRANTS PROGRAMS</b>								
RECIPIENTS	5,753	5,182	(\$71)	-11%	5,753	5,477	(295)	-5%
PAYMENTS	\$1,911,105	\$1,847,279	(\$63,826)	-3%	\$1,911,105	\$1,999,312	(\$152,033)	-8%
AVERAGE GRANT	\$332	\$356	\$24	7%	\$332	\$365	(\$39)	-2%
<b>ADULT FAMILY CARE</b>								
RECIPIENTS	10	11	(1)	-9%	10	12	(1)	-8%
PAYMENTS	\$3,550	\$4,138	(\$688)	-14%	\$3,550	\$3,485	\$653	19%
AVERAGE GRANT	\$355	\$376	(\$21)	-6%	\$355	\$290	\$65	22%
<b>TEMPORARY ASSISTANCE FOR NEEDY FAMILIES</b>								
RECIPIENTS-TOTAL	65,468	65,180	308	0%	65,468	66,834	(1,670)	-2%
TANF	61,216	61,013	203	0%	61,216	62,777	(1,764)	-3%
TANF-UNEMPLOYED PARENTS	4,252	4,147	105	0%	4,252	4,057	90	2%
1/EMERGENCY ASSISTANCE	16	4	12	-67%	16	2	2	100%
PAYMENTS-TOTAL	\$8,740,214	\$8,664,159	\$76,055	-1%	\$8,740,214	\$8,943,591	(\$279,431)	-3%
TANF	\$8,261,718	\$8,195,800	\$65,919	-1%	\$8,261,718	\$8,488,461	(\$290,661)	-3%
TANF-UNEMPLOYED PARENTS	\$477,045	\$467,154	\$9,890	-3%	\$477,045	\$456,624	\$10,531	2%
EMERGENCY ASSISTANCE	\$1,451	\$1,205	\$246	-56%	\$1,451	\$506	\$699	136%
AVERAGE GRANT-TOTAL	\$134	\$133	\$1	-1%	\$134	\$134	(\$1)	-1%
AVERAGE MONEY PAYMENTS	\$135	\$134	\$1	-1%	\$135	\$135	(\$1)	-1%
AVERAGE TANF-UNEMPLOYED PARENTS	\$112	\$113	(\$0)	-3%	\$112	\$113	\$0	0%
AVERAGE EMERGENCY ASSISTANCE	\$91	\$301	(\$211)	31%	\$91	\$253	\$48	19%
<b>TITLE IV-E</b>								
ADOPTION SUBSIDY- RECIPIENTS	5,294	4,113	1,181	29%	5,294	3,856	257	7%
ADOPTION SUBSIDY - PAYMENTS	\$2,927,331	\$2,361,771	\$565,560	24%	\$2,927,331	\$2,117,135	\$244,636	12%
AVERAGE ADOPTION SUBSIDY	\$553	\$574	(\$21)	-4%	\$553	\$549	\$25	5%
<b>SPECIAL NEEDS ADOPTION</b>								
SPECIAL NEEDS ADOPTION - RECIPIENTS	4,822	3,739	1,083	29%	4,822	3,600	139	4%
SPECIAL NEEDS ADOPTION - PAYMENTS	\$3,340,764	\$2,831,069	\$509,696	18%	\$3,340,764	\$2,816,822	\$14,246	1%
AVERAGE SPECIAL NEEDS ADOPTION	\$693	\$757	(\$64)	-8%	\$693	\$782	(\$25)	-3%
<b>GENERAL RELIEF</b>								
PAYMENTS-TOTAL	\$449,062	\$411,780	\$37,282	9%	\$449,062	\$473,049	(\$61,269)	-13%

1/ INCLUDES 16 RECIPIENTS IN JULY AND 4 IN JUNE WHO ALSO REC'D MONEY PAYMENTS

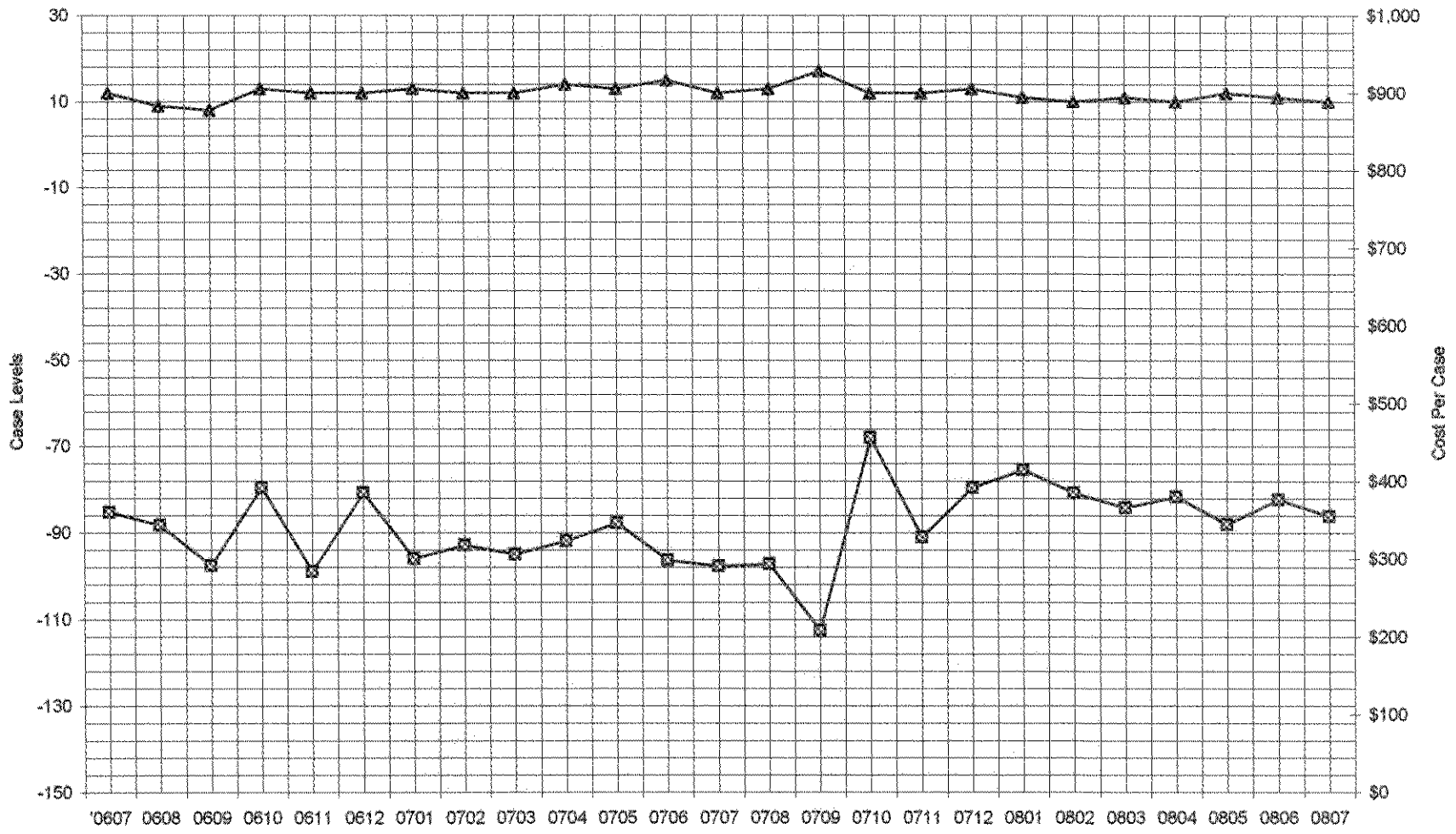
\*\* YEAR TO DATE TOTAL: THE RECIPIENT FIGURES DO NOT REPRESENT TRUE COUNTS AS THE RECIPIENTS ARE GENERALLY THE SAME EVERY MONTH. THE YEAR TO DATE DOLLAR FIGURES ARE ACCURATE.

General Disclaimer: Unless specifically stated otherwise, case count numbers indicated in this report(s) stem from amounts entered by local personnel into applicable ADAPT and LASER systems; therefore, all reviewers/users of this report understand that the accuracy of such case count numbers is contingent on the respective numbers entered by local personnel. Any subsequent liabilities associated with incorrect amounts being entered into the noted systems rests solely with each locality. Effective March 2005 a difference method of calculating TANF & TANF-UP information was established.

### Auxiliary Grants Programs Cases & Payments



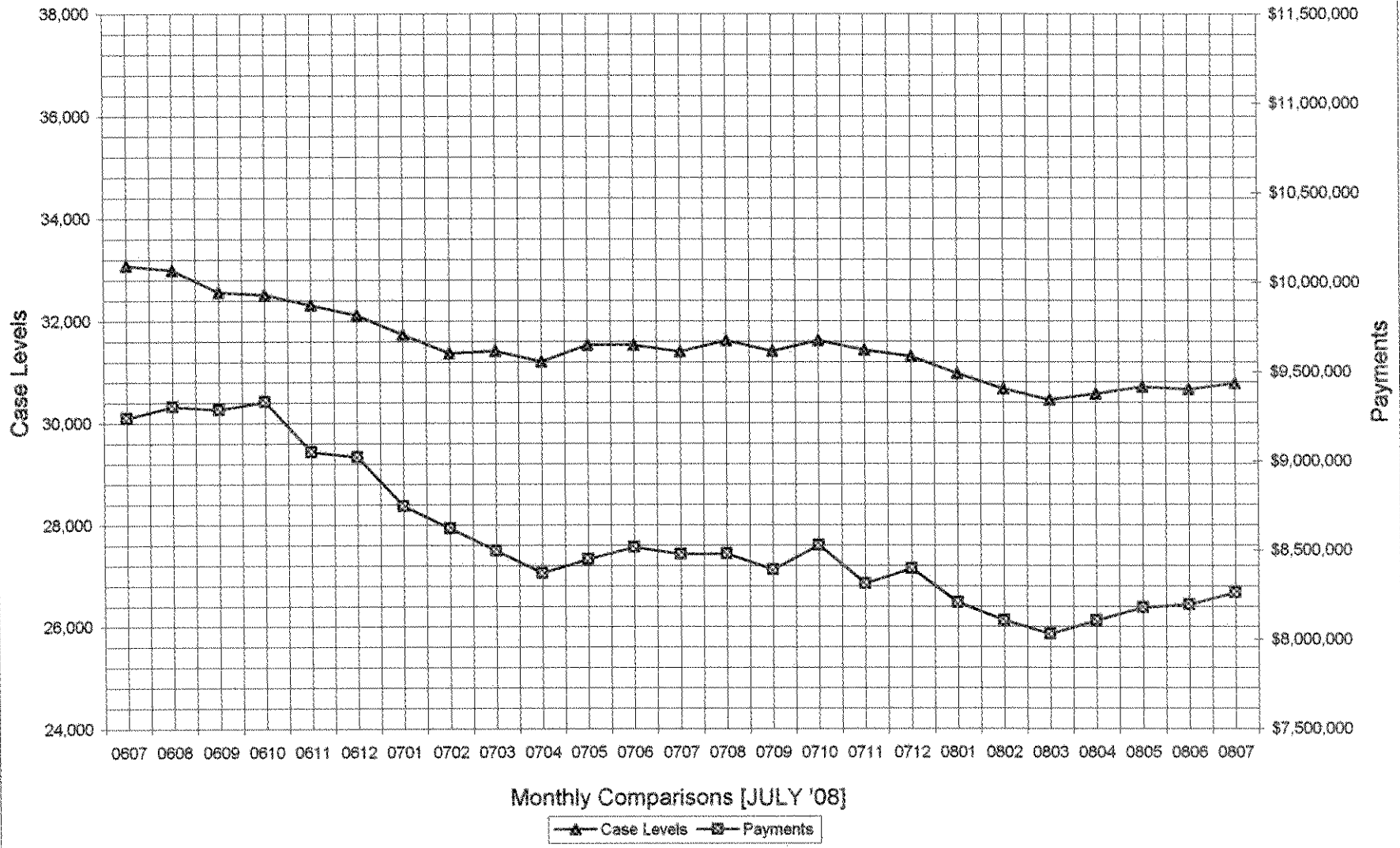
### Adult Family Care Cases vs Cost-Per-Case



Monthly Comparisons [JULY '08]

Case Levels
  Cost Per Case

### TANF Cases & Payments



# GENERAL RELIEF Payments

