

DEPT. OF SOCIAL SERVICES-PAYMENTS AND AVERAGE GRANTS FOR WELFARE PROGRAMS

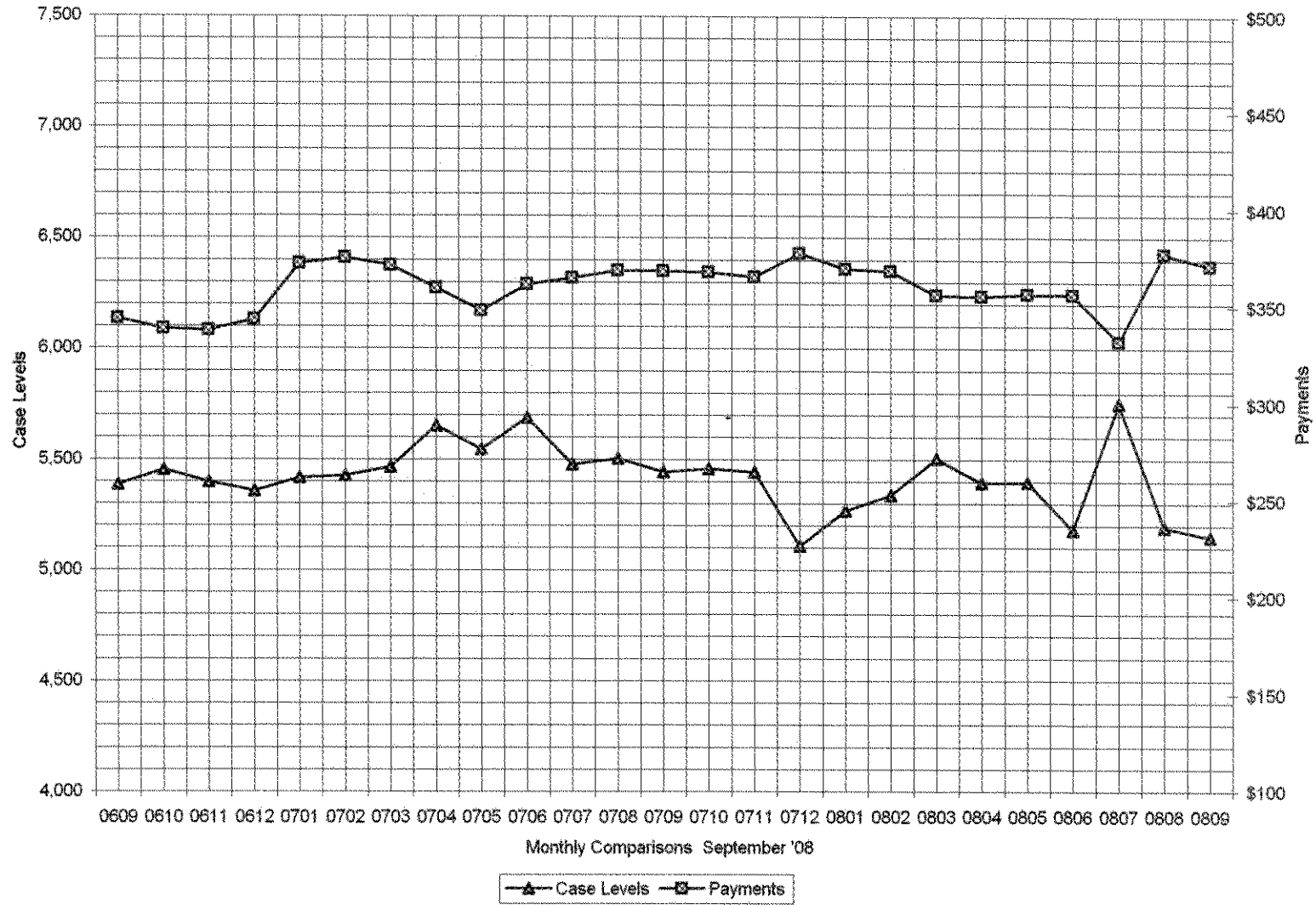
	SEPTEMBER '08	AUGUST '08	INC./DEC. PRI MON	% DIFF PRI MON	**YTD TOTAL	SEPTEMBER '07	INC/DEC PRIOR YR.	% INC/DEC PRIOR YR.
AUXILIARY GRANTS PROGRAMS								
RECIPIENTS	5,149	5,193	44	1%	16,095	5,443	(294)	-5%
PAYMENTS	\$1,912,805	\$1,959,810	\$47,005	2%	\$5,783,520	\$2,005,863	(\$46,053)	-2%
AVERAGE GRANT	\$371	\$377	\$6	2%	\$359	\$369	\$9	2%
ADULT FAMILY CARE								
RECIPIENTS	27	27	0	0%	64	17	10	59%
PAYMENTS	\$9,267	\$11,016	(\$1,749)	-16%	\$23,633	\$3,534	\$7,482	212%
AVERAGE GRANT	\$343	\$408	(\$65)	-16%	\$372	\$208	\$135	65%
TEMPORARY ASSISTANCE FOR NEEDY FAMILIES								
RECIPIENTS-TOTAL	67,977	66,843	1,134	2%	200,288	66,593	260	0%
TANF	63,217	62,411	806	1%	196,844	62,452	(51)	0%
TANF-UNEMPLOYED PARENTS	4,760	4,432	328	7%	13,444	4,069	363	9%
1/EMERGENCY ASSISTANCE	13	10	3	30%	39	9	1	11%
PAYMENTS-TOTAL	\$9,035,254	\$8,837,935	\$197,320	2%	\$26,613,403	\$8,848,982	(\$9,048)	0%
TANF	\$8,491,643	\$8,357,182	\$134,462	2%	\$25,110,543	\$8,385,339	(\$28,157)	0%
TANF-UNEMPLOYED PARENTS	\$639,969	\$478,525	\$81,464	13%	\$1,495,559	\$455,150	\$23,374	5%
EMERGENCY ASSISTANCE	\$3,622	\$2,228	\$1,394	63%	\$7,301	\$1,800	\$428	24%
AVERAGE GRANT-TOTAL	\$133	\$132	\$1	1%	\$133	\$133	(\$1)	0%
AVERAGE MONEY PAYMENTS	\$134	\$134	\$0	0%	\$134	\$134	(\$0)	0%
AVERAGE TANF-UNEMPLOYED PARENTS	\$113	\$108	\$5	5%	\$111	\$111	(\$3)	-3%
AVERAGE EMERGENCY ASSISTANCE	\$279	\$223	\$56	31%	\$187	\$200	\$23	11%
TITLE IV-E								
ADOPTION SUBSIDY- RECIPIENTS	4,379	4,579	(200)	-4%	14,252	4,308	271	6%
ADOPTION SUBSIDY - PAYMENTS	\$2,876,387	\$2,968,822	(\$92,535)	-3%	\$8,772,640	\$2,448,611	\$520,310	21%
AVERAGE ADOPTION SUBSIDY	\$657	\$648	\$8	1%	\$616	\$568	\$80	14%
SPECIAL NEEDS ADOPTION								
SPECIAL NEEDS ADOPTION - RECIPIENTS	3,975	4,184	(209)	-5%	12,981	3,717	467	13%
SPECIAL NEEDS ADOPTION - PAYMENTS	\$3,163,650	\$3,262,756	(\$98,907)	-3%	\$9,767,370	\$2,641,262	\$621,496	24%
AVERAGE SPECIAL NEEDS ADOPTION	\$796	\$780	\$16	2%	\$752	\$711	\$69	10%
GENERAL RELIEF								
PAYMENTS-TOTAL	\$501,348	\$429,508	\$71,840	17%	\$1,379,918	\$460,189	(\$30,680)	-7%

1/ INCLUDES 13 RECIPIENTS IN SEPTEMBER AND 16 IN AUGUST WHO ALSO REC'D MONEY PAYMENTS

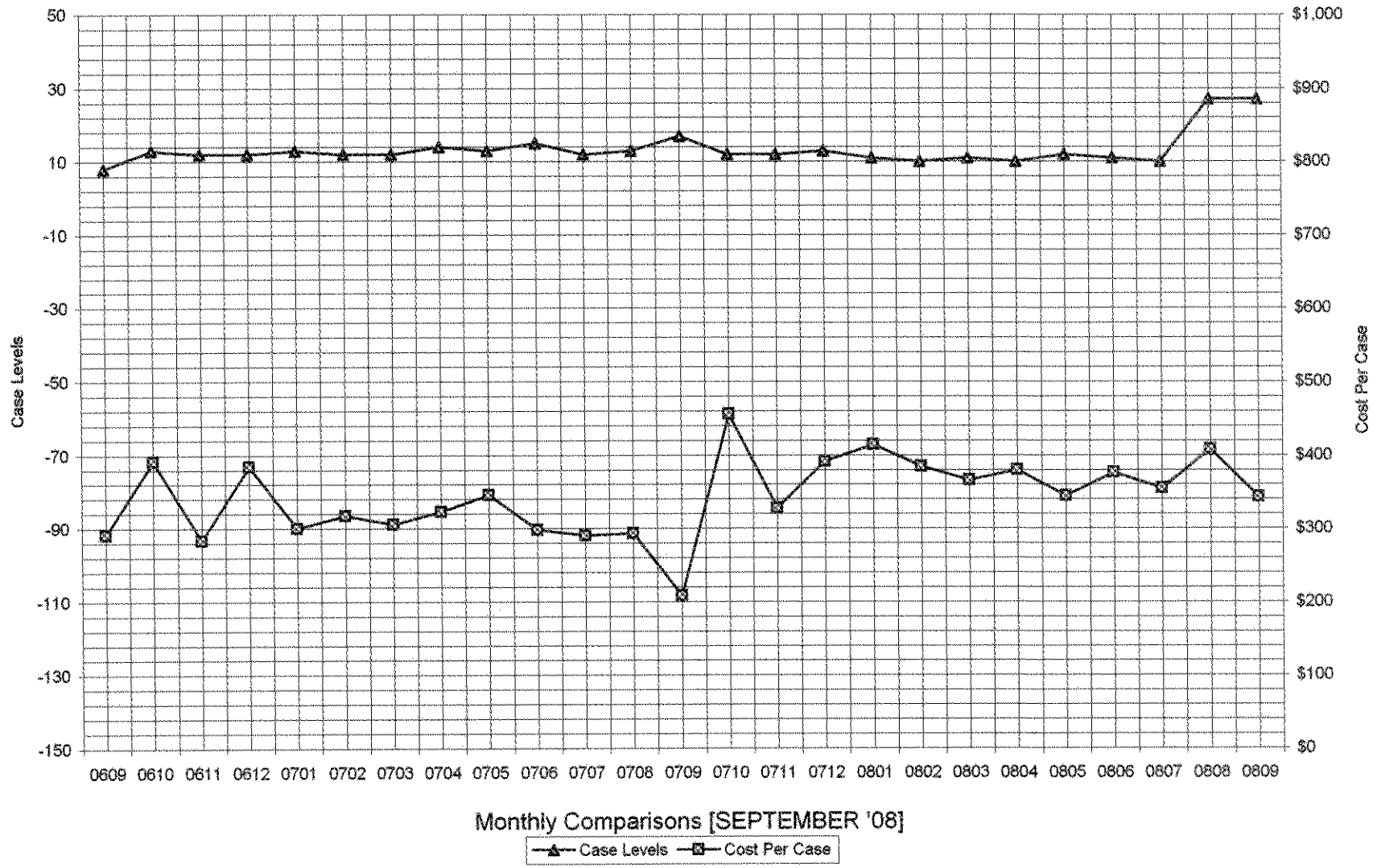
** YEAR TO DATE TOTAL: THE RECIPIENT FIGURES DO NOT REPRESENT TRUE COUNTS AS THE RECIPIENTS ARE GENERALLY THE SAME EVERY MONTH. THE YEAR TO DATE DOLLAR FIGURES ARE ACCURATE.

General Disclaimer: Unless specifically stated otherwise, case count numbers indicated in this report(s) stem from amounts entered by local personnel into applicable ADAPT and LASER systems; therefore, all reviewers/users of this report understand that the accuracy of such case count numbers is contingent on the respective numbers entered by local personnel. Any subsequent liabilities associated with incorrect amounts being entered into the noted systems rests solely with each locality. Effective March 2008 a difference method of calculating TANF & TANF-UP information was established.

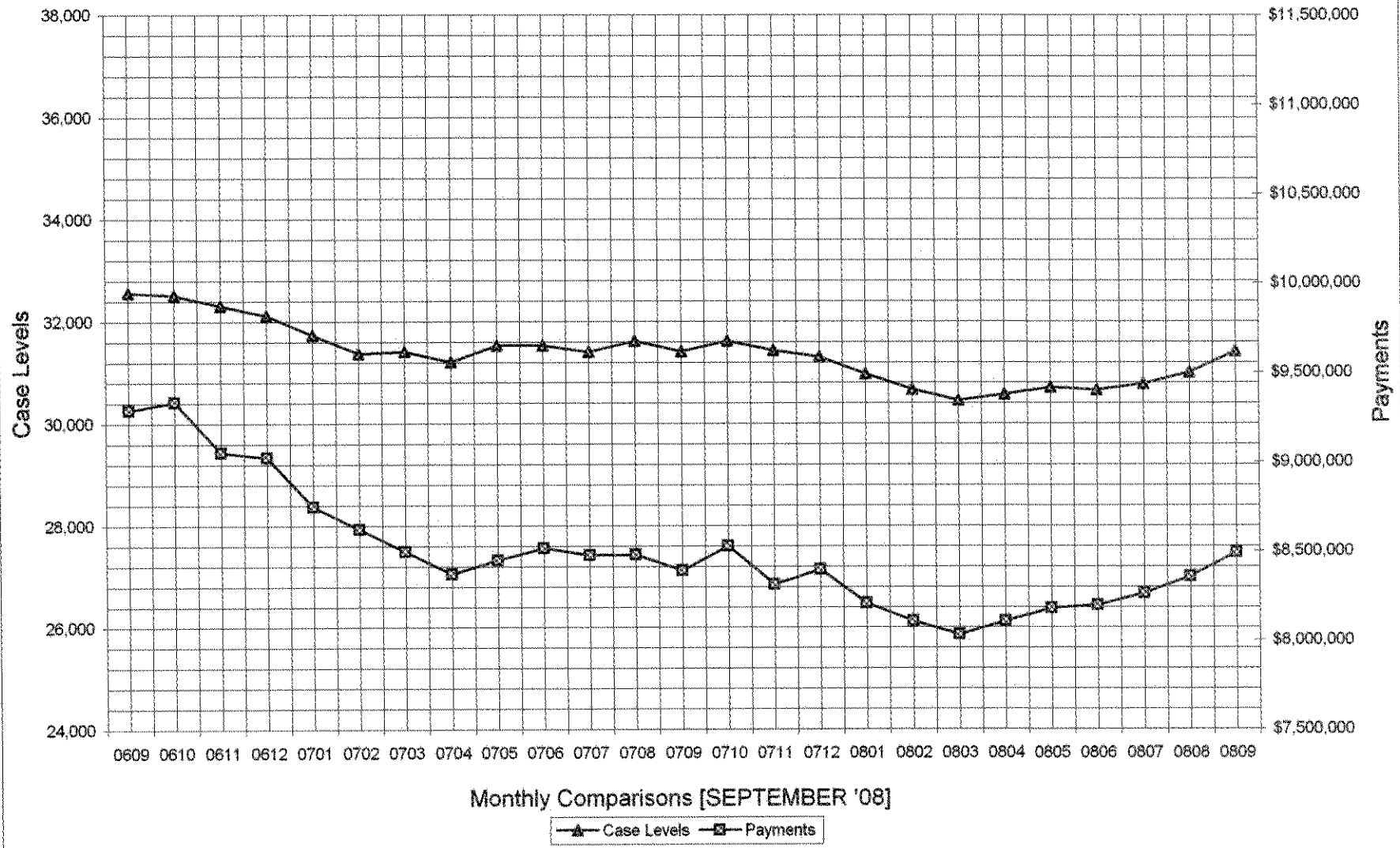
Auxiliary Grants Programs Cases & Payments



Adult Family Care Cases vs Cost-Per-Case



TANF Cases & Payments



GENERAL RELIEF Payments

