

DEPT. OF SOCIAL SERVICES-PAYMENTS AND AVERAGE GRANTS FOR WELFARE PROGRAMS

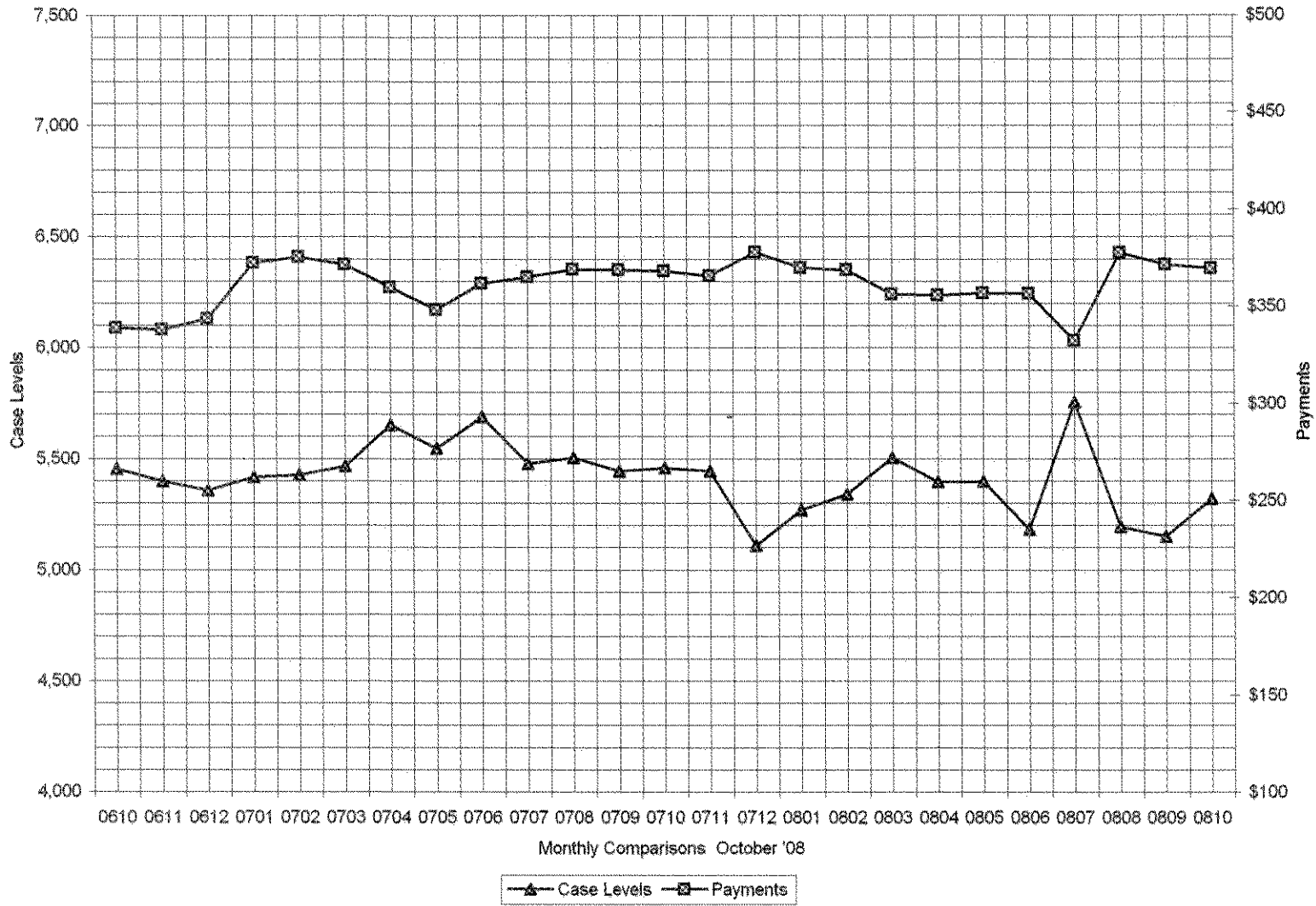
	OCTOBER '08	SEPTEMBER '08	INC./DEC. PRI MON	% DIFF PRI MON	**YTD TOTAL	OCTOBER '07	INC/DEC PRIOR YR.	% INC/DEC PRIOR YR.
<b>AUXILIARY GRANTS PROGRAMS</b>								
RECIPIENTS	5,320	5,149	171	3%	21,415	5,457	(137)	-3%
PAYMENTS	\$1,965,510	\$1,912,605	\$52,905	3%	\$7,749,030	\$2,008,517	(\$43,008)	-2%
AVERAGE GRANT	\$369	\$371	(\$2)	-1%	\$362	\$368	\$1	0%
<b>ADULT FAMILY CARE</b>								
RECIPIENTS	30	27	3	11%	94	12	18	150%
PAYMENTS	\$10,537	\$9,267	\$1,270	14%	\$34,370	\$5,466	\$5,071	93%
AVERAGE GRANT	\$351	\$343	\$8	2%	\$366	\$455	(\$104)	-23%
<b>TEMPORARY ASSISTANCE FOR NEEDY FAMILIES</b>								
RECIPIENTS-TOTAL	70,898	67,977	2,921	4%	271,186	66,970	1,020	2%
TANF	65,546	63,217	2,329	4%	252,360	62,751	2,795	4%
TANF-UNEMPLOYED PARENTS	5,352	4,760	592	12%	18,796	4,184	1,168	28%
1/EMERGENCY ASSISTANCE	18	13	5	38%	57	6	12	200%
PAYMENTS-TOTAL	\$9,385,708	\$9,035,254	\$350,452	4%	\$35,999,109	\$9,000,122	\$385,584	4%
TANF	\$8,778,284	\$8,491,643	\$286,641	3%	\$33,888,828	\$8,543,086	\$235,198	3%
TANF-UNEMPLOYED PARENTS	\$606,470	\$539,989	\$66,481	12%	\$2,102,029	\$471,416	\$135,054	29%
EMERGENCY ASSISTANCE	\$952	\$3,622	(\$2,670)	-74%	\$8,253	\$1,897	(\$945)	-50%
AVERAGE GRANT-TOTAL	\$132	\$133	(\$1)	0%	\$133	\$134	(\$2)	-1%
AVERAGE MONEY PAYMENTS	\$134	\$134	(\$0)	0%	\$134	\$136	(\$2)	-1%
AVERAGE TANF-UNEMPLOYED PARENTS	\$113	\$113	(\$0)	0%	\$112	\$112	\$1	1%
AVERAGE EMERGENCY ASSISTANCE	\$53	\$279	(\$226)	-81%	\$145	\$316	(\$263)	-83%
<b>TITLE IV-E</b>								
ADOPTION SUBSIDY- RECIPIENTS	4,655	4,379	276	6%	18,907	4,322	333	8%
ADOPTION SUBSIDY - PAYMENTS	\$3,001,292	\$2,876,387	\$124,905	4%	\$11,773,932	\$2,716,894	\$264,398	10%
AVERAGE ADOPTION SUBSIDY	\$645	\$657	(\$12)	-2%	\$623	\$629	\$16	3%
<b>SPECIAL NEEDS ADOPTION</b>								
SPECIAL NEEDS ADOPTION - RECIPIENTS	4,197	3,975	222	6%	17,178	3,830	367	10%
SPECIAL NEEDS ADOPTION - PAYMENTS	\$3,298,229	\$3,163,850	\$134,380	4%	\$13,065,600	\$3,052,153	\$246,077	8%
AVERAGE SPECIAL NEEDS ADOPTION	\$786	\$796	(\$10)	-1%	\$761	\$797	(\$11)	-1%
<b>GENERAL RELIEF</b>								
PAYMENTS-TOTAL	\$445,879	\$501,348	(\$55,469)	-11%	\$1,825,797	\$501,469	(\$55,590)	-11%

1/ INCLUDES 18 RECIPIENTS IN OCTOBER AND 13 IN SEPTEMBER WHO ALSO REC'D MONEY PAYMENTS

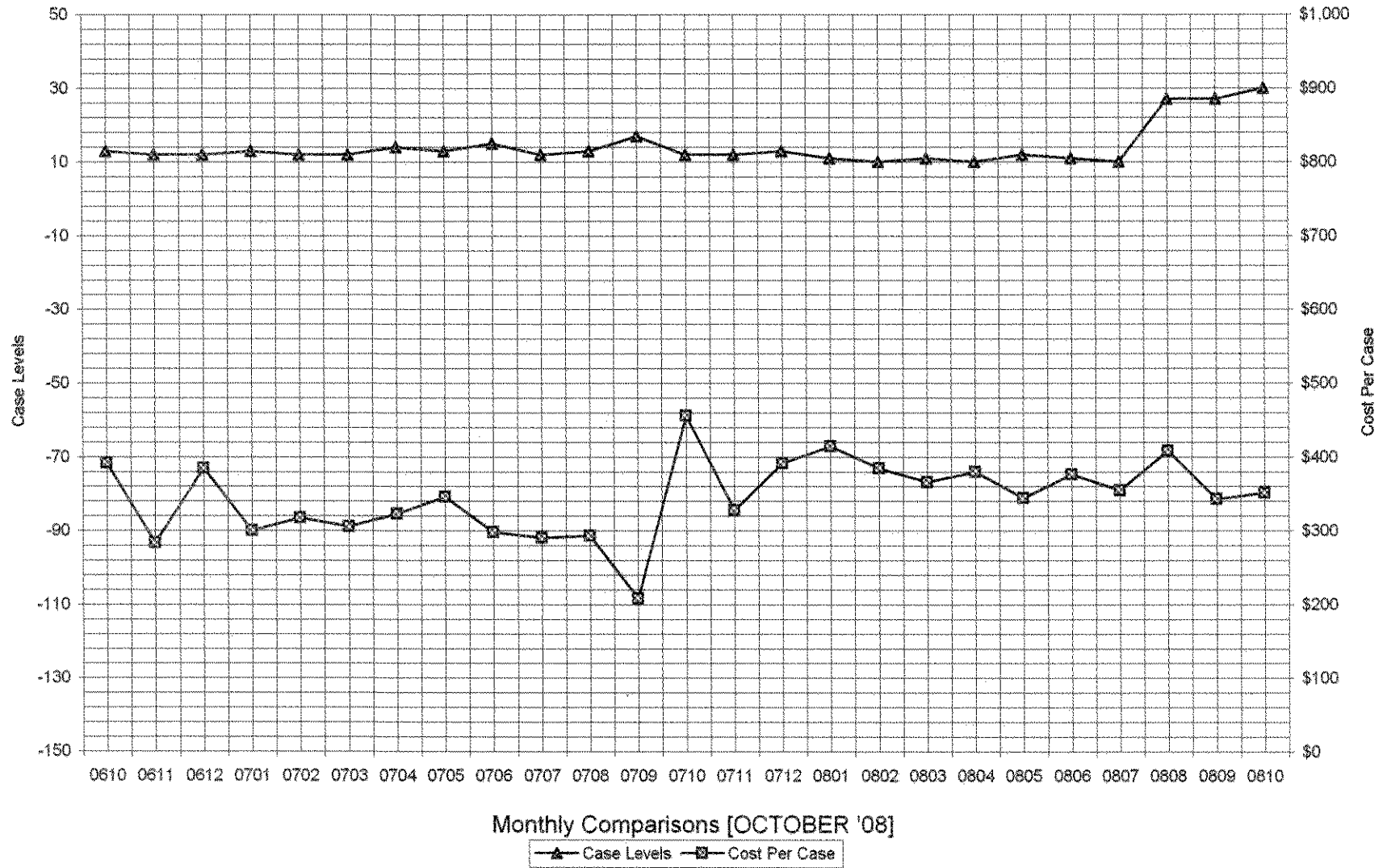
\*\* YEAR TO DATE TOTAL: THE RECIPIENT FIGURES DO NOT REPRESENT TRUE COUNTS AS THE RECIPIENTS ARE GENERALLY THE SAME EVERY MONTH. THE YEAR TO DATE DOLLAR FIGURES ARE ACCURATE.

General Disclaimer: Unless specifically stated otherwise, case count numbers indicated in this report(s) stem from amounts entered by local personnel into applicable ADAPT and LASER systems; therefore, all reviewers/users of this report understand that the accuracy of such case count numbers is contingent on the respective numbers entered by local personnel. Any subsequent liabilities associated with incorrect amounts being entered into the noted systems rests solely with each locality. Effective March 2008 a difference method of calculating TANF & TANF-UP information was established.

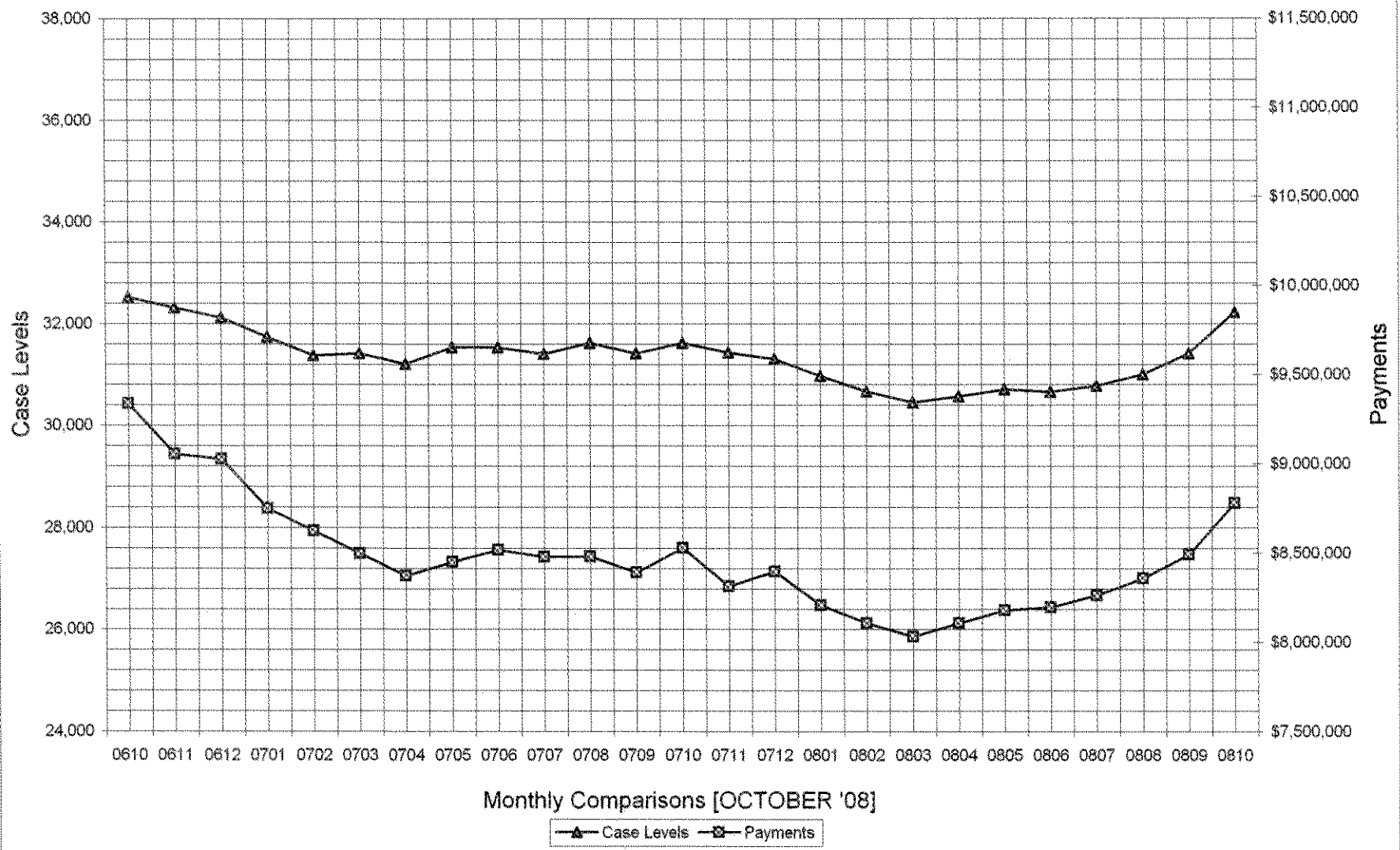
### Auxiliary Grants Programs Cases & Payments



### Adult Family Care Cases vs Cost-Per-Case



### TANF Cases & Payments



Monthly Comparisons [OCTOBER '08]

Case Levels
  Payments

# GENERAL RELIEF Payments

