

DEPT. OF SOCIAL SERVICES-PAYMENTS AND AVERAGE GRANTS FOR WELFARE PROGRAMS

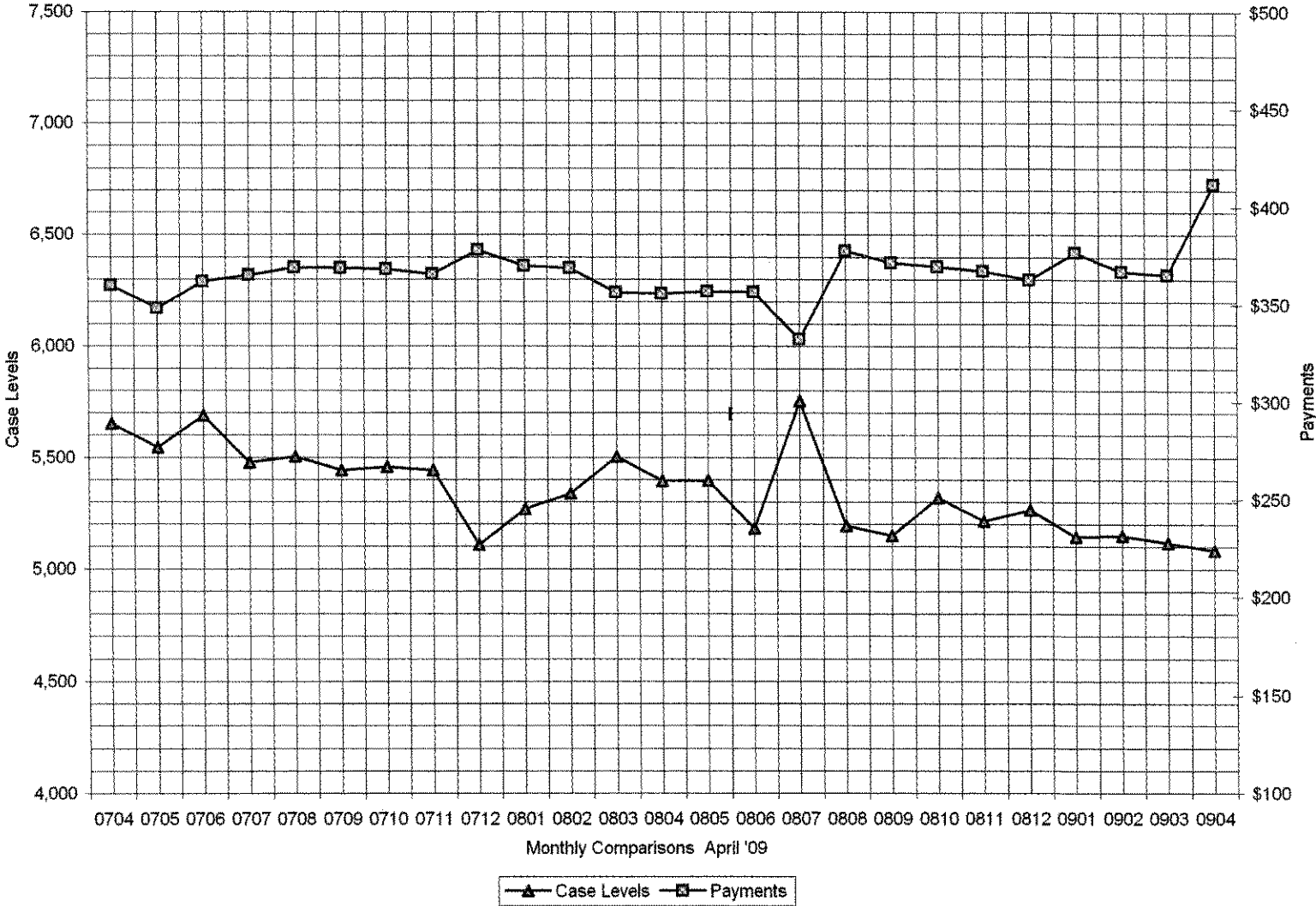
	APRIL '09	MARCH '09	INC./DEC. PRI MON	% DIFF PRI MON	**YTD TOTAL	APRIL '08	INC/DEC PRIOR YR.	% INC/DEC PRIOR YR.
AUXILIARY GRANTS PROGRAMS								
RECIPIENTS	5,085	5,118	(33)	-1%	52,392	5,394	(309)	-6%
PAYMENTS	\$2,094,794	\$1,869,242	\$225,552	12%	\$19,364,575	\$1,917,519	\$177,275	9%
AVERAGE GRANT	\$412	\$365	\$47	13%	\$370	\$355	\$56	16%
ADULT FAMILY CARE								
RECIPIENTS	26	26	0	0%	270	10	16	160%
PAYMENTS	\$9,366	\$9,532	(\$166)	-2%	\$101,285	\$3,794	\$5,573	147%
AVERAGE GRANT	\$360	\$367	(\$6)	-2%	\$375	\$379	(\$19)	-5%
TEMPORARY ASSISTANCE FOR NEEDY FAMILIES								
RECIPIENTS-TOTAL	76,864	75,343	1,521	2%	718,136	64,993	10,364	16%
TANF	69,641	68,321	1,320	2%	660,534	60,626	9,015	15%
TANF-UNEMPLOYED PARENTS	7,223	7,022	201	3%	57,602	4,367	2,856	65%
1/EMERGENCY ASSISTANCE	6	14	(8)	-57%	104	2	4	200%
PAYMENTS-TOTAL	\$9,659,387	\$9,592,164	\$67,223	1%	\$93,407,069	\$8,614,035	\$1,045,352	12%
TANF	\$8,886,265	\$8,803,082	\$83,183	1%	\$86,943,572	\$8,106,662	\$779,603	10%
TANF-UNEMPLOYED PARENTS	\$771,471	\$787,322	(\$15,851)	-2%	\$6,443,734	\$506,274	\$265,198	52%
EMERGENCY ASSISTANCE	\$1,651	\$1,760	(\$109)	-6%	\$19,763	\$1,099	\$552	50%
AVERAGE GRANT-TOTAL	\$126	\$127	(\$2)	-1%	\$130	\$133	(\$7)	-5%
AVERAGE MONEY PAYMENTS	\$128	\$129	(\$1)	-1%	\$132	\$134	(\$6)	-5%
AVERAGE TANF-UNEMPLOYED PARENTS	\$107	\$112	(\$5)	-5%	\$112	\$116	(\$9)	-8%
AVERAGE EMERGENCY ASSISTANCE	\$275	\$126	\$149	119%	\$190	\$550	(\$274)	-50%
TITLE IV-E								
ADOPTION SUBSIDY- RECIPIENTS	4,556	4,660	(104)	-2%	45,425	4,543	13	0%
ADOPTION SUBSIDY - PAYMENTS	\$2,859,454	\$2,925,141	(\$65,687)	-2%	\$28,989,131	\$2,576,705	\$282,749	11%
AVERAGE ADOPTION SUBSIDY	\$628	\$628	(\$0)	0%	\$638	\$567	\$60	11%
SPECIAL NEEDS ADOPTION								
SPECIAL NEEDS ADOPTION - RECIPIENTS	4,457	4,488	(31)	-1%	42,834	3,952	505	13%
SPECIAL NEEDS ADOPTION - PAYMENTS	\$3,356,088	\$3,279,806	\$76,281	2%	\$32,547,153	\$3,107,035	\$249,053	8%
AVERAGE SPECIAL NEEDS ADOPTION	\$753	\$731	\$22	3%	\$760	\$786	(\$33)	-4%
GENERAL RELIEF								
PAYMENTS-TOTAL	\$325,847	\$326,264	(\$417)	0%	\$4,245,164	\$449,635	(\$123,788)	-28%

1/ INCLUDES 6 RECIPIENTS IN APRIL AND 14 IN MARCH WHO ALSO REC'D MONEY PAYMENTS

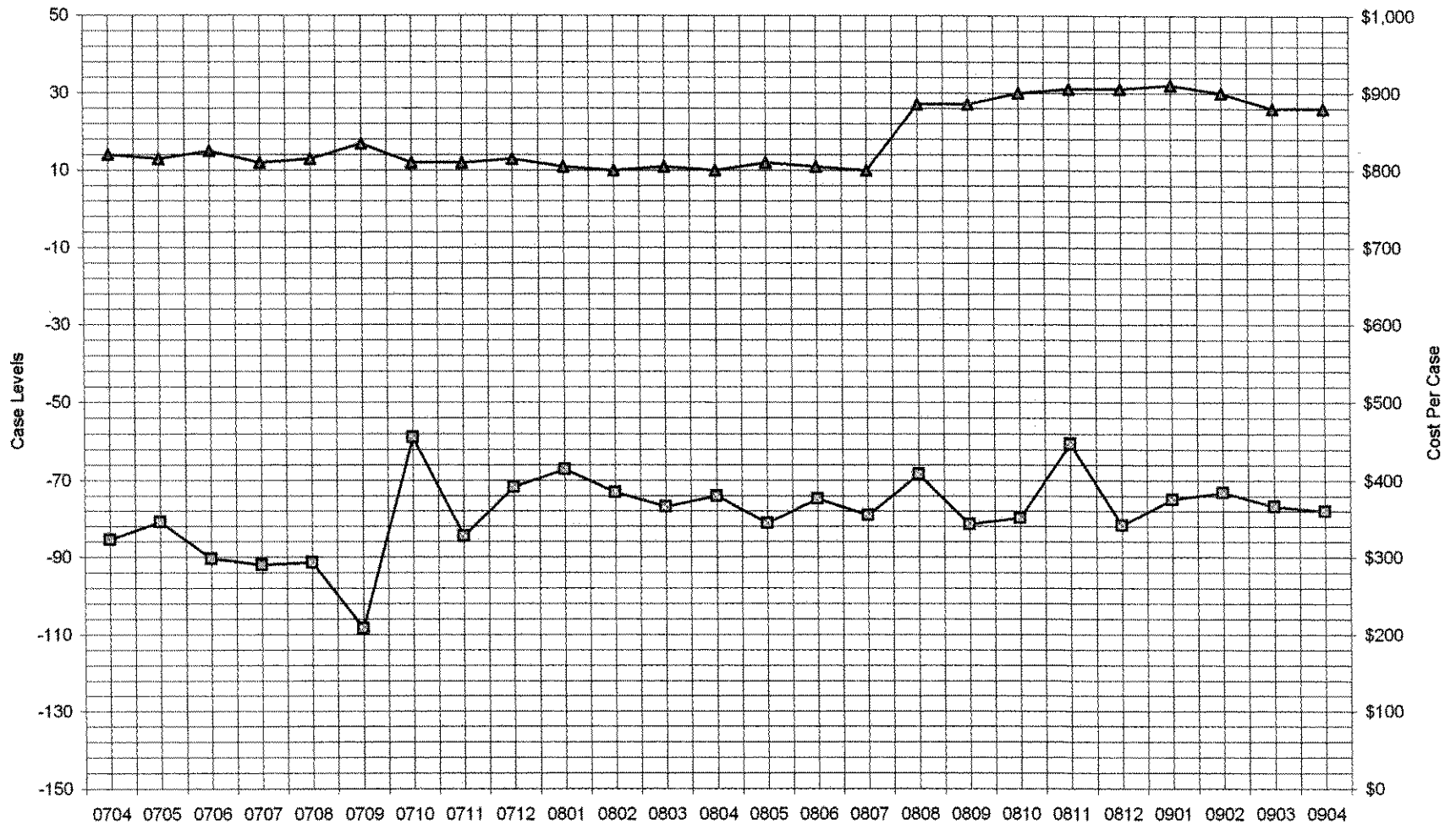
** YEAR TO DATE TOTAL: THE RECIPIENT FIGURES DO NOT REPRESENT TRUE COUNTS AS THE RECIPIENTS ARE GENERALLY THE SAME EVERY MONTH. THE YEAR TO DATE DOLLAR FIGURES ARE ACCURATE.

General Disclaimer: Unless specifically stated otherwise, case count numbers indicated in this report(s) stem from amounts entered by local personnel into applicable ADAPT and LASER systems; therefore, all reviewers/users of this report understand that the accuracy of such case count numbers is contingent on the respective numbers entered by local personnel. Any subsequent liabilities associated with incorrect amounts being entered into the noted systems rests solely with each locality. Effective March 2008 a difference method of calculating TANF & TANF-UP information was established.

Auxiliary Grants Programs Cases & Payments



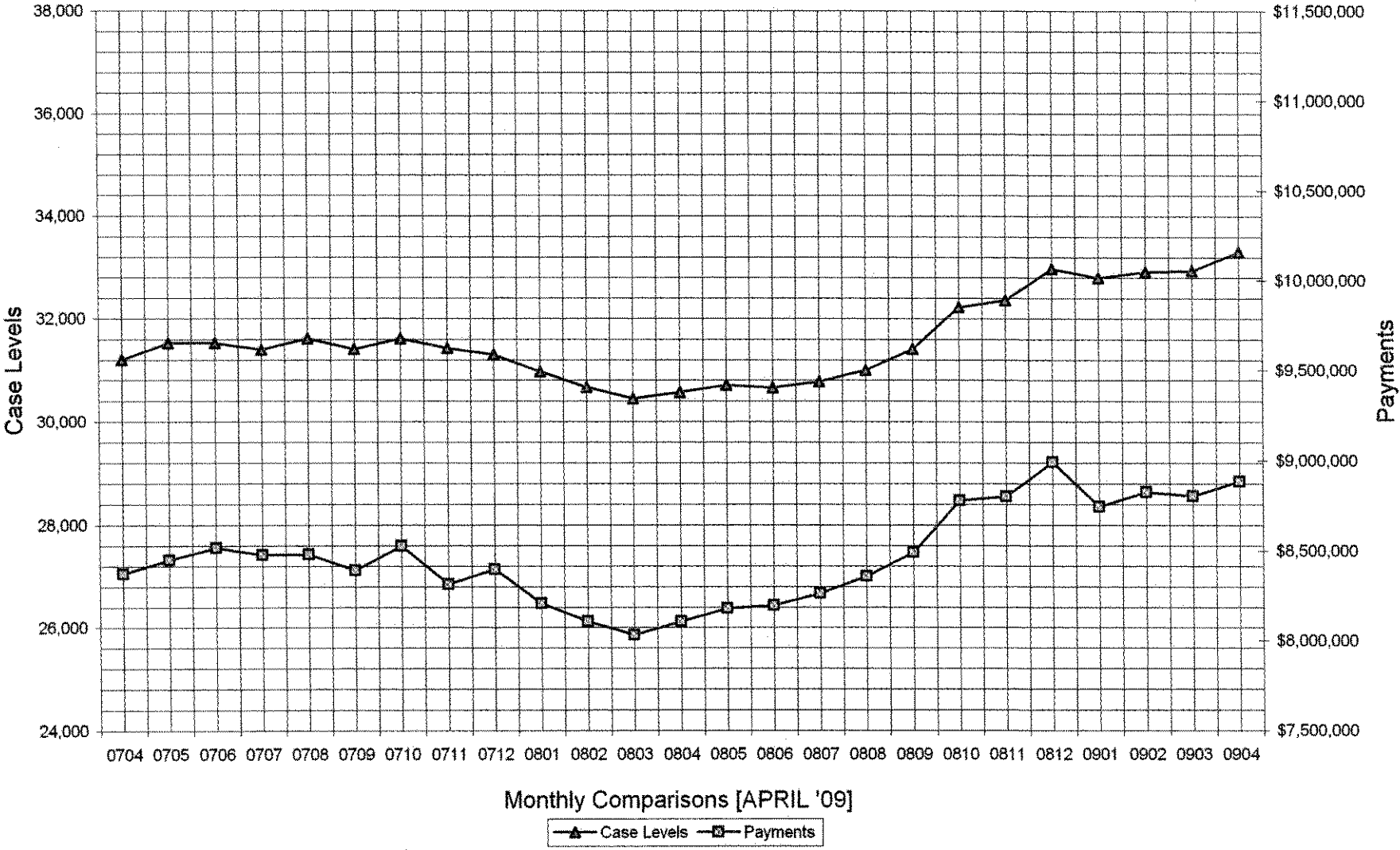
Adult Family Care Cases vs Cost-Per-Case



Monthly Comparisons [APRIL '09]

Case Levels
 Cost Per Case

TANF Cases & Payments



GENERAL RELIEF
Payments

