

DEPT. OF SOCIAL SERVICES-PAYMENTS AND AVERAGE GRANTS FOR WELFARE PROGRAMS

	JULY '09	JUNE '09	INC./DEC. PRI MON	% DIFF PRI MON	**YTD TOTAL	JULY '08	INC/DEC PRIOR YR.	% INC/DEC PRIOR YR.
AUXILIARY GRANTS PROGRAMS								
RECIPIENTS	5,115	5,084	31	1%	5,115	5,753	(638)	-11%
PAYMENTS	\$1,880,085	\$1,882,972	(\$2,887)	0%	\$1,880,085	\$1,911,105	(\$31,020)	-2%
AVERAGE GRANT	\$368	\$370	(\$3)	-1%	\$368	\$332	\$36	11%
ADULT FAMILY CARE								
RECIPIENTS	36	37	(1)	-3%	36	10	26	260%
PAYMENTS	\$13,677	\$13,588	\$89	1%	\$13,677	\$3,550	\$10,127	285%
AVERAGE GRANT	\$380	\$367	\$13	3%	\$380	\$355	\$25	7%
TEMPORARY ASSISTANCE FOR NEEDY FAMILIES								
RECIPIENTS-TOTAL	82,180	80,243	1,937	2%	82,180	65,468	14,785	23%
TANF	74,348	72,783	1,585	2%	74,348	61,216	13,132	21%
TANF-UNEMPLOYED PARENTS	7,832	7,480	352	5%	7,832	4,252	3,580	84%
1/EMERGENCY ASSISTANCE	3	10	(7)	-70%	3	16	(13)	-81%
PAYMENTS-TOTAL	\$10,497,622	\$10,286,689	\$210,933	2%	\$10,497,622	\$8,740,214	\$1,757,408	20%
TANF	\$9,651,557	\$9,464,888	\$186,668	2%	\$9,651,557	\$8,261,718	\$1,389,838	17%
TANF-UNEMPLOYED PARENTS	\$844,868	\$819,951	\$24,718	3%	\$844,868	\$477,045	\$367,823	77%
EMERGENCY ASSISTANCE	\$1,398	\$1,850	(\$453)	-24%	\$1,398	\$1,451	(\$53)	-4%
AVERAGE GRANT-TOTAL	\$128	\$128	(\$0)	0%	\$128	\$134	(\$6)	-4%
AVERAGE MONEY PAYMENTS	\$130	\$130	(\$0)	0%	\$130	\$135	(\$5)	-4%
AVERAGE TANF-UNEMPLOYED PARENTS	\$108	\$110	(\$2)	-2%	\$108	\$112	(\$4)	-4%
AVERAGE EMERGENCY ASSISTANCE	\$466	\$185	\$281	152%	\$466	\$91	\$375	414%
TITLE IV-E								
ADOPTION SUBSIDY- RECIPIENTS	5,110	4,209	901	21%	5,110	5,294	(184)	-3%
ADOPTION SUBSIDY - PAYMENTS	\$3,251,497	\$2,455,532	\$795,965	32%	\$3,055,231	\$2,927,331	\$324,166	11%
AVERAGE ADOPTION SUBSIDY	\$636	\$583	\$53	9%	\$598	\$553	\$83	15%
SPECIAL NEEDS ADOPTION								
SPECIAL NEEDS ADOPTION - RECIPIENTS	5,052	4,260	792	19%	5,052	4,822	230	5%
SPECIAL NEEDS ADOPTION - PAYMENTS	\$3,768,489	\$3,088,196	\$680,273	22%	\$3,768,489	\$3,340,764	\$427,705	13%
AVERAGE SPECIAL NEEDS ADOPTION	\$746	\$725	\$21	3%	\$746	\$693	\$53	8%
GENERAL RELIEF								
PAYMENTS-TOTAL	\$333,971	\$401,011	(\$67,040)	-17%	\$333,971	\$449,662	(\$115,091)	-26%

1/ INCLUDES 3 RECIPIENTS IN JULY AND 10 IN JUNE WHO ALSO REC'D MONEY PAYMENTS

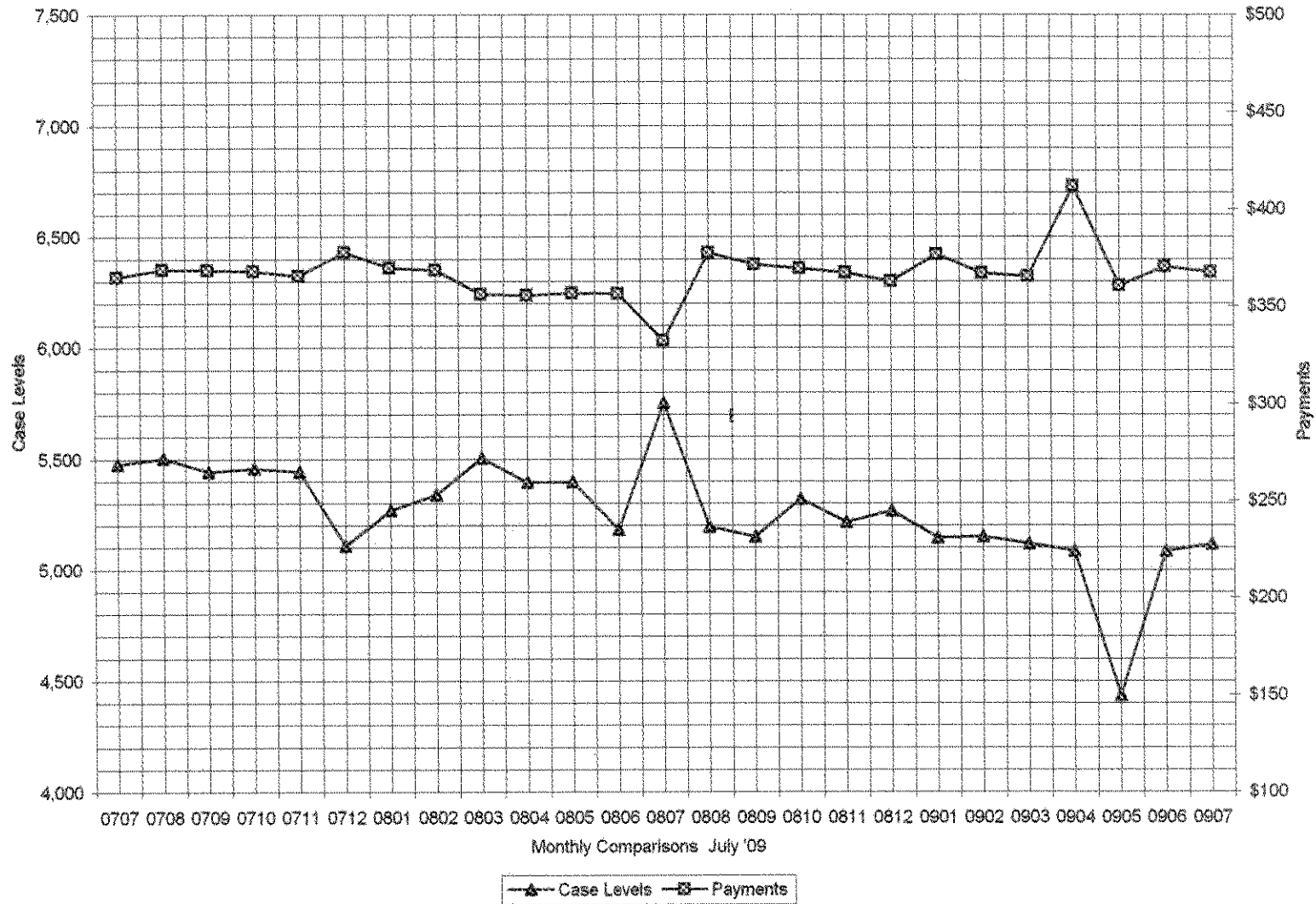
** YEAR TO DATE TOTAL: THE RECIPIENT FIGURES DO NOT REPRESENT TRUE COUNTS AS THE RECIPIENTS ARE GENERALLY THE SAME EVERY MONTH. THE YEAR TO DATE DOLLAR FIGURES ARE ACCURATE.

ARRA amounts are included in the payment amounts

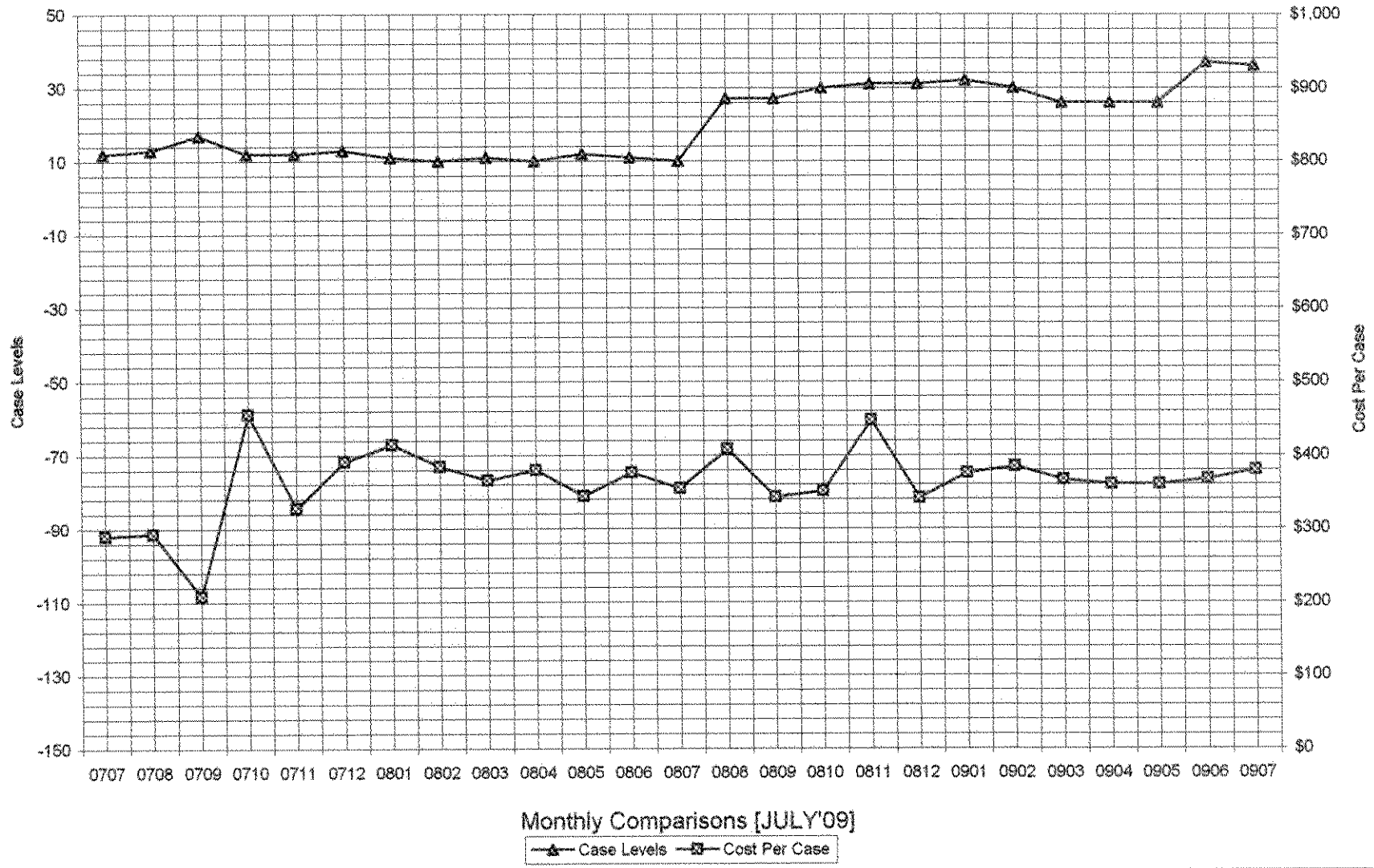
General Disclaimer: Unless specifically stated otherwise, case count numbers indicated in this report(s) stem from amounts entered by local personnel into applicable ADAPT and LASER systems; therefore, all reviewers/users of this report understand that the accuracy of such case count numbers is contingent on the respective numbers entered by local personnel. Any subsequent liabilities associated with incorrect amounts being entered into the noted systems rests solely with each locality.

Effective March 2008 a difference method of calculating TANF & TANF-UP information was established.

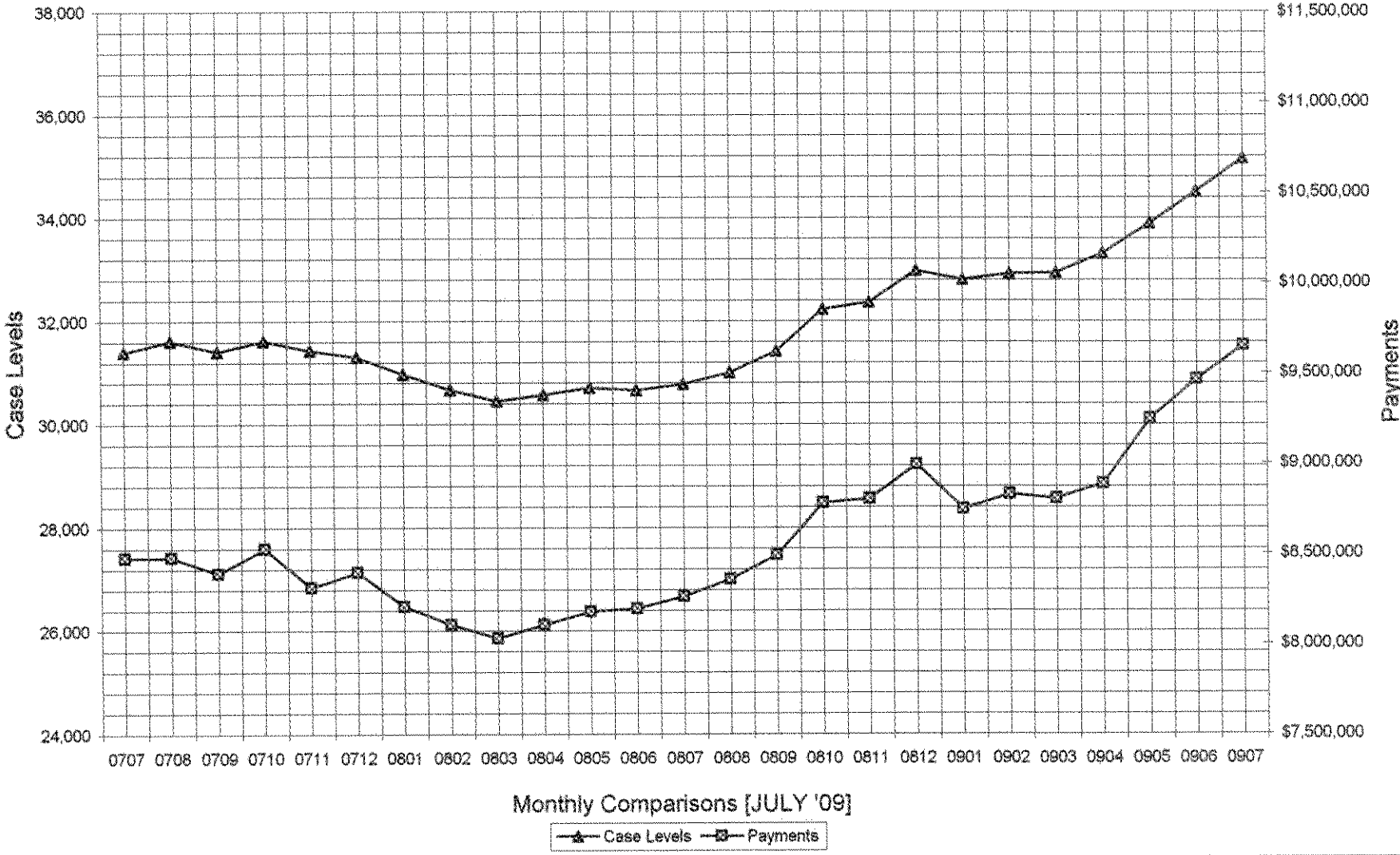
Auxiliary Grants Programs Cases & Payments



Adult Family Care Cases vs Cost-Per-Case



TANF Cases & Payments



Monthly Comparisons [JULY '09]

Case Levels
 Payments

GENERAL RELIEF Payments

