

DEPT. OF SOCIAL SERVICES-PAYMENTS AND AVERAGE GRANTS FOR WELFARE PROGRAMS

	AUGUST '10	JULY '10	INC./DEC. PRI MON	% DIFF PRI MON	**YTD TOTAL	AUGUST '09	INC/DEC PRIOR YR.	% INC/DEC PRIOR YR.
AUXILIARY GRANTS PROGRAMS								
RECIPIENTS	4,580	4,554	26	1%	9,134	5,098	(518)	-10%
PAYMENTS	\$1,607,000	\$2,039,327	(\$432,327)	-21%	\$3,646,326	\$1,881,015	(\$274,015)	-15%
AVERAGE GRANT	\$351	\$448	(\$97)	-22%	\$399	\$369	(\$18)	-5%
ADULT FAMILY CARE								
RECIPIENTS	37	36	1	3%	73	32	5	16%
PAYMENTS	\$20,554	\$14,743	\$5,810	39%	\$35,297	\$11,575	\$8,978	78%
AVERAGE GRANT	\$556	\$410	\$146	36%	\$484	\$362	\$194	54%
TEMPORARY ASSISTANCE FOR NEEDY FAMILIES								
RECIPIENTS-TOTAL	86,291	86,573	(282)	0%	172,864	83,754	2,626	3%
TANF	77,618	77,793	(175)	0%	155,411	75,588	2,030	3%
TANF-UNEMPLOYED PARENTS	8,673	8,780	(107)	-1%	17,453	8,166	507	6%
1/EMERGENCY ASSISTANCE	3	7	(4)	-57%	10	0	3	0%
PAYMENTS-TOTAL	\$11,039,316	\$11,013,052	\$26,265	0%	\$22,052,368	\$10,730,906	\$308,411	3%
TANF	\$10,061,501	\$10,041,241	\$20,260	0%	\$20,102,742	\$9,826,066	\$235,435	2%
TANF-UNEMPLOYED PARENTS	\$977,414	\$969,871	\$7,543	1%	\$1,947,286	\$904,840	\$72,575	8%
EMERGENCY ASSISTANCE	\$401	\$1,939	(\$1,539)	-79%	\$2,340	\$0	\$401	0%
AVERAGE GRANT-TOTAL	\$128	\$127	\$1	1%	\$128	\$128	(\$0)	0%
AVERAGE MONEY PAYMENTS	\$130	\$129	\$1	0%	\$129	\$130	(\$0)	0%
AVERAGE TANF-UNEMPLOYED PARENTS	\$113	\$110	\$2	2%	\$112	\$111	\$2	2%
AVERAGE EMERGENCY ASSISTANCE	\$134	\$277	(\$143)	-52%	\$234	\$0	\$134	0%
TITLE IV-E								
ADOPTION SUBSIDY- RECIPIENTS	5,063	5,824	(761)	-13%	10,887	4,627	436	9%
ADOPTION SUBSIDY - PAYMENTS	\$3,286,078	\$3,875,059	(\$588,981)	-15%	\$7,161,136	\$3,009,637	\$276,441	9%
AVERAGE ADOPTION SUBSIDY	\$649	\$665	(\$16)	-2%	\$658	\$650	(\$1)	0%
SPECIAL NEEDS ADOPTION								
SPECIAL NEEDS ADOPTION - RECIPIENTS	4,736	5,487	(751)	-14%	10,223	4,579	157	3%
SPECIAL NEEDS ADOPTION - PAYMENTS	\$3,414,013	\$4,088,611	(\$674,598)	-16%	\$7,502,624	\$3,301,167	\$112,846	3%
AVERAGE SPECIAL NEEDS ADOPTION	\$721	\$745	(\$24)	-3%	\$734	\$721	(\$0)	0%
GENERAL RELIEF								
PAYMENTS-TOTAL	\$169,264	\$298,176	(\$128,911)	-43%	\$467,440	\$240,970	(\$71,706)	-30%

1/ INCLUDES 3 RECIPIENTS IN AUGUST AND 7 IN JULY WHO ALSO REC'D MONEY PAYMENTS

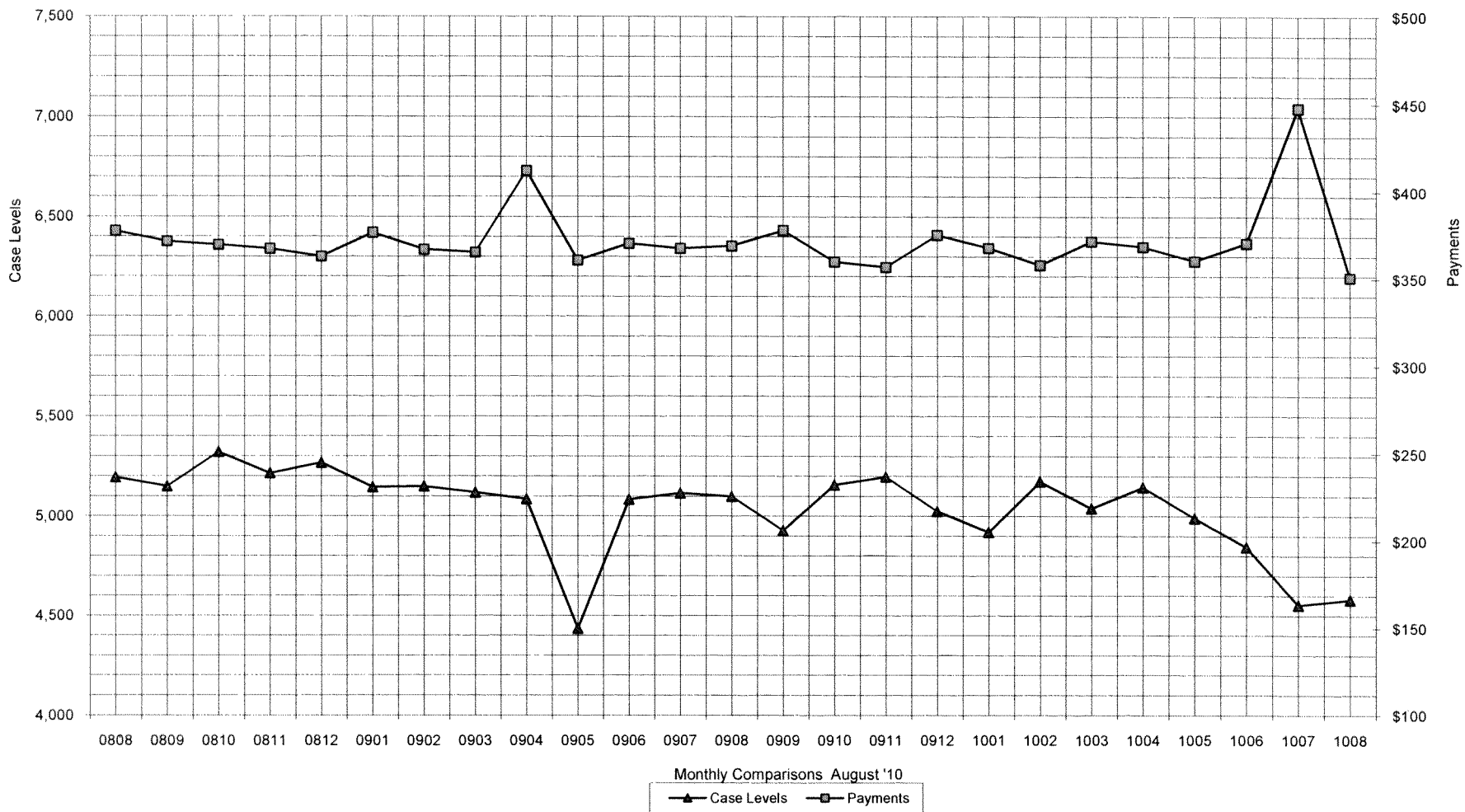
** YEAR TO DATE TOTAL: THE RECIPIENT FIGURES DO NOT REPRESENT TRUE COUNTS AS THE RECIPIENTS ARE GENERALLY THE SAME EVERY MONTH. THE YEAR TO DATE DOLLAR FIGURES ARE ACCURATE.

ARRA amounts are included in the payment amounts

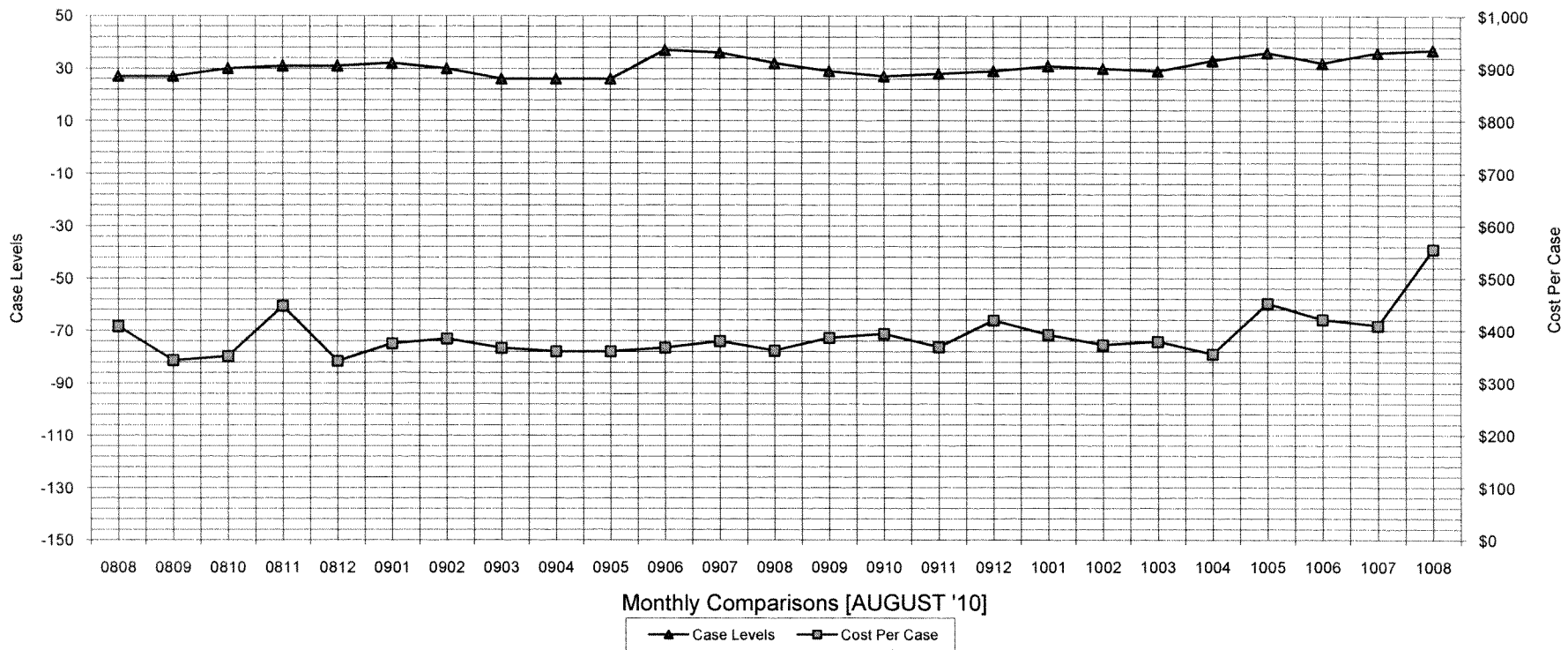
General Disclaimer: Unless specifically stated otherwise, case count numbers indicated in this report(s) stem from amounts entered by local personnel into applicable ADAPT and LASER systems; therefore, all reviewers/users of this report understand that the accuracy of such case count numbers is contingent on the respective numbers entered by local personnel. Any subsequent liabilities associated with incorrect amounts being entered into the noted systems rests solely with each locality.

Effective March 2008 a difference method of calculating TANF & TANF-UP information was established.

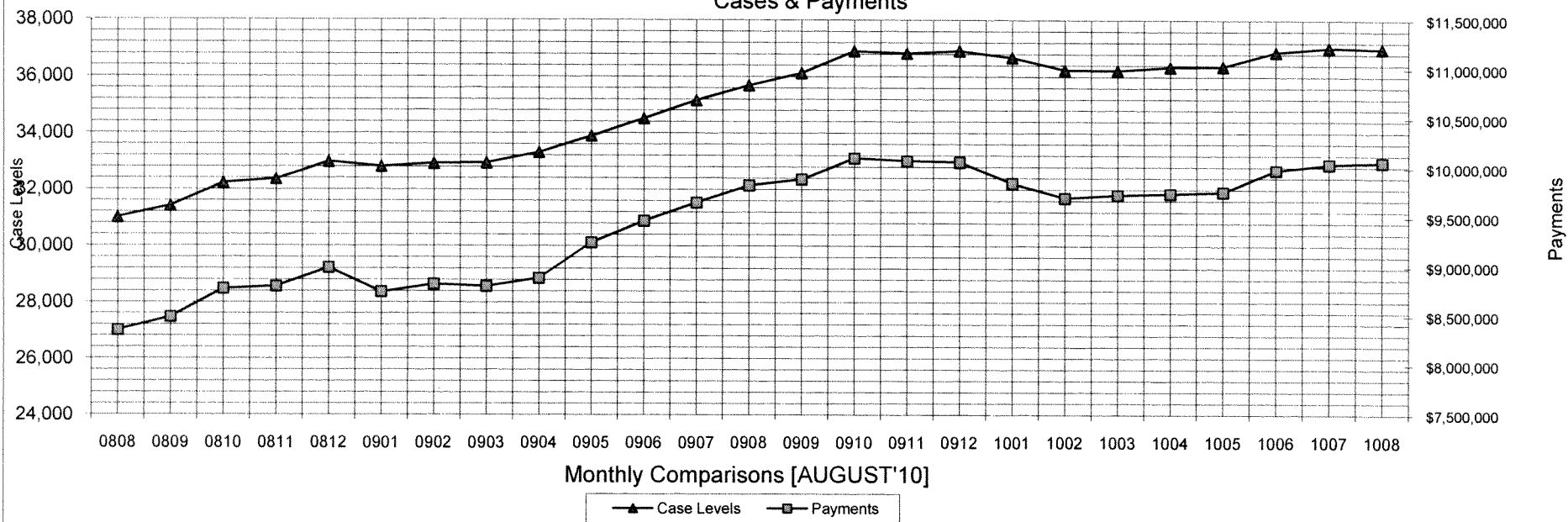
Auxiliary Grants Programs Cases & Payments



Adult Family Care Cases vs Cost-Per-Case



TANF Cases & Payments



GENERAL RELIEF Payments

