

DEPT. OF SOCIAL SERVICES-PAYMENTS AND AVERAGE GRANTS FOR WELFARE PROGRAMS

	NOVEMBER '10	OCTOBER '10	INC./DEC. PRI MON	% DIFF PRI MON	**YTD TOTAL	NOVEMBER'09	INC/DEC PRIOR YR.	% INC/DEC PRIOR YR.
AUXILIARY GRANTS PROGRAMS								
RECIPIENTS	5,200	4,924	276	6%	24,282	5,196	4	0%
PAYMENTS	\$1,750,435	\$1,964,385	(\$213,950)	-11%	\$9,221,563	\$1,856,584	(\$106,149)	-6%
AVERAGE GRANT	\$337	\$399	(\$62)	-16%	\$380	\$357	(\$21)	-6%
ADULT FAMILY CARE								
RECIPIENTS	39	40	(1)	-3%	189	28	11	39%
PAYMENTS	\$15,790	\$15,968	(\$178)	-1%	\$81,808	\$10,320	\$5,470	53%
AVERAGE GRANT	\$405	\$399	\$6	1%	\$433	\$369	\$36	10%
TEMPORARY ASSISTANCE FOR NEEDY FAMILIES								
RECIPIENTS-TOTAL	86,295	86,372	(77)	0%	432,007	86,827	(450)	-1%
TANF	77,583	77,653	(70)	0%	388,391	78,167	(584)	-1%
TANF-UNEMPLOYED PARENTS	8,712	8,719	(7)	0%	43,616	8,660	52	1%
1/EMERGENCY ASSISTANCE	2	5	(3)	-60%	24	4	(2)	-50%
PAYMENTS-TOTAL	\$11,025,564	\$10,951,893	\$73,671	1%	\$55,073,294	\$11,022,305	\$3,259	0%
TANF	\$10,066,597	\$10,006,914	\$59,683	1%	\$50,241,647	\$10,073,607	(\$7,010)	0%
TANF-UNEMPLOYED PARENTS	\$958,739	\$944,381	\$14,359	2%	\$4,827,255	\$947,324	\$11,415	1%
EMERGENCY ASSISTANCE	\$227	\$598	(\$371)	-62%	\$4,392	\$1,374	(\$1,147)	-83%
AVERAGE GRANT-TOTAL	\$128	\$127	\$1	1%	\$127	\$127	\$1	1%
AVERAGE MONEY PAYMENTS	\$130	\$129	\$1	1%	\$129	\$129	\$1	1%
AVERAGE TANF-UNEMPLOYED PARENTS	\$110	\$108	\$2	2%	\$111	\$109	\$1	1%
AVERAGE EMERGENCY ASSISTANCE	\$114	\$120	(\$6)	-5%	\$183	\$343	(\$230)	-67%
TITLE IV-E								
ADOPTION SUBSIDY- RECIPIENTS	5,923	5,153	770	15%	27,542	5,371	552	10%
ADOPTION SUBSIDY - PAYMENTS	\$3,719,461	\$3,707,353	\$12,108	0%	\$18,204,450	\$3,615,604	\$103,857	3%
AVERAGE ADOPTION SUBSIDY	\$628	\$719	(\$91)	-13%	\$661	\$673	(\$45)	-7%
SPECIAL NEEDS ADOPTION								
SPECIAL NEEDS ADOPTION - RECIPIENTS	5,593	4,931	662	13%	26,249	4,622	971	21%
SPECIAL NEEDS ADOPTION - PAYMENTS	\$3,671,124	\$4,005,937	(\$334,813)	-8%	\$18,808,741	\$3,206,759	\$464,365	14%
AVERAGE SPECIAL NEEDS ADOPTION	\$656	\$812	(\$156)	-19%	\$717	\$694	(\$37)	-5%
GENERAL RELIEF								
PAYMENTS-TOTAL	\$355,742	\$241,206	\$114,536	47%	\$945,647	\$449,731	(\$93,989)	-21%

1/ INCLUDES 2 RECIPIENTS IN NOVEMBER AND 5 IN OCTOBER WHO ALSO REC'D MONEY PAYMENTS

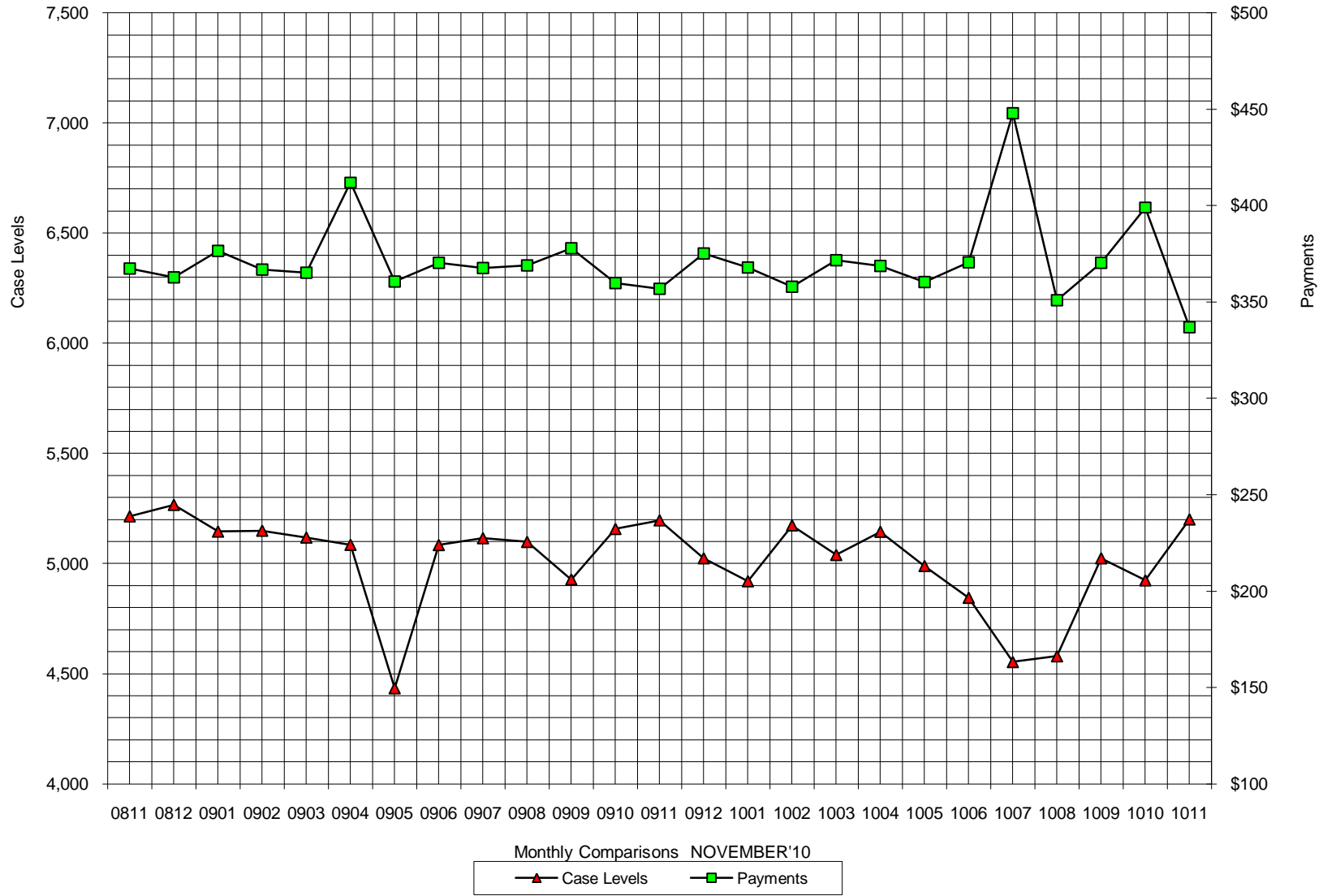
** YEAR TO DATE TOTAL: THE RECIPIENT FIGURES DO NOT REPRESENT TRUE COUNTS AS THE RECIPIENTS ARE GENERALLY THE SAME EVERY MONTH. THE YEAR TO DATE DOLLAR FIGURES ARE ACCURATE.

ARRA amounts are included in the payment amounts

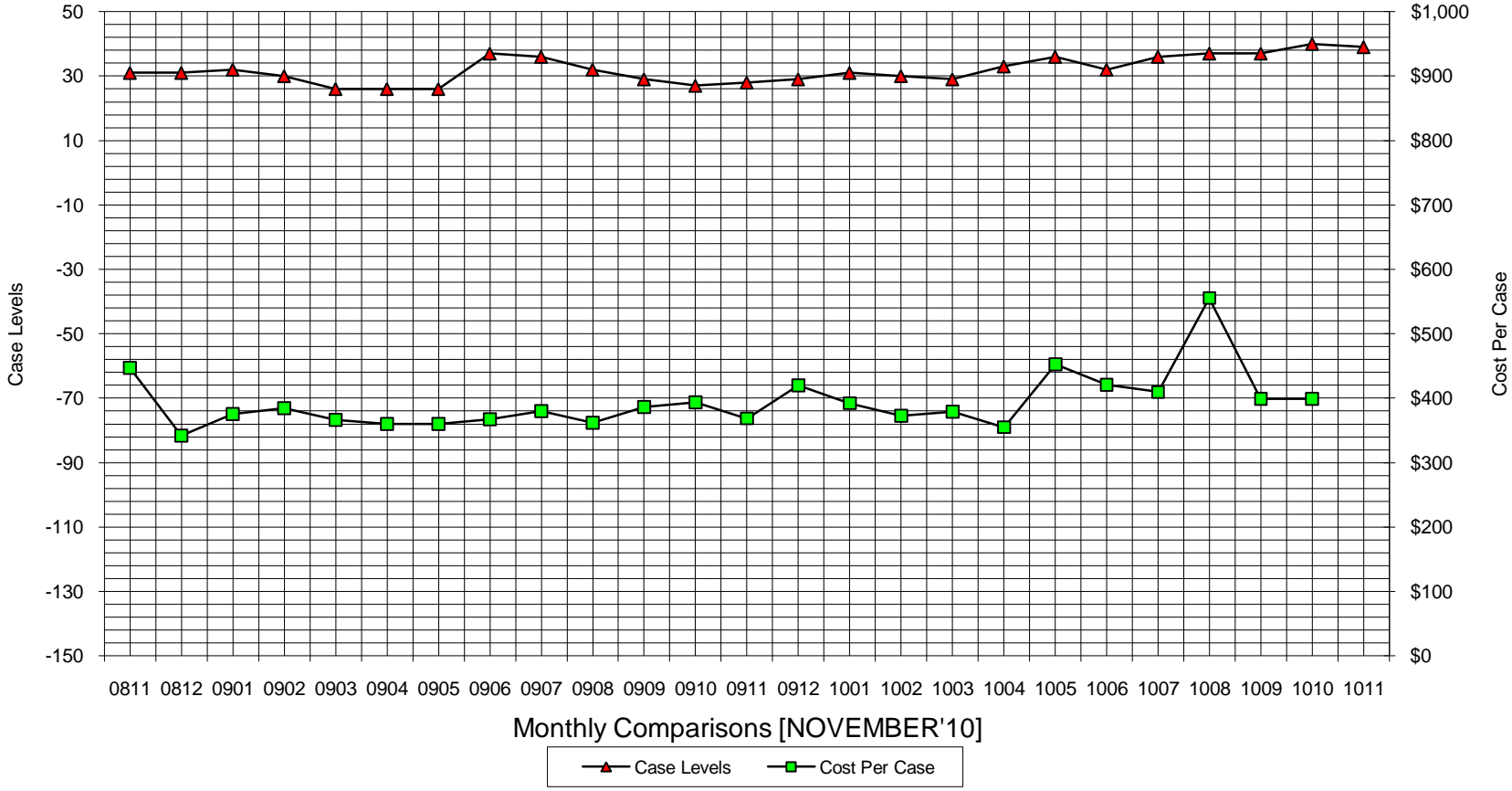
General Disclaimer: Unless specifically stated otherwise, case count numbers indicated in this report(s) stem from amounts entered by local personnel into applicable ADAPT and LASER systems; therefore, all reviewers/users of this report understand that the accuracy of such case count numbers is contingent on the respective numbers entered by local personnel. Any subsequent liabilities associated with incorrect amounts being entered into the noted systems rests solely with each locality.

Effective March 2008 a difference method of calculating TANF & TANF-UP information was established.

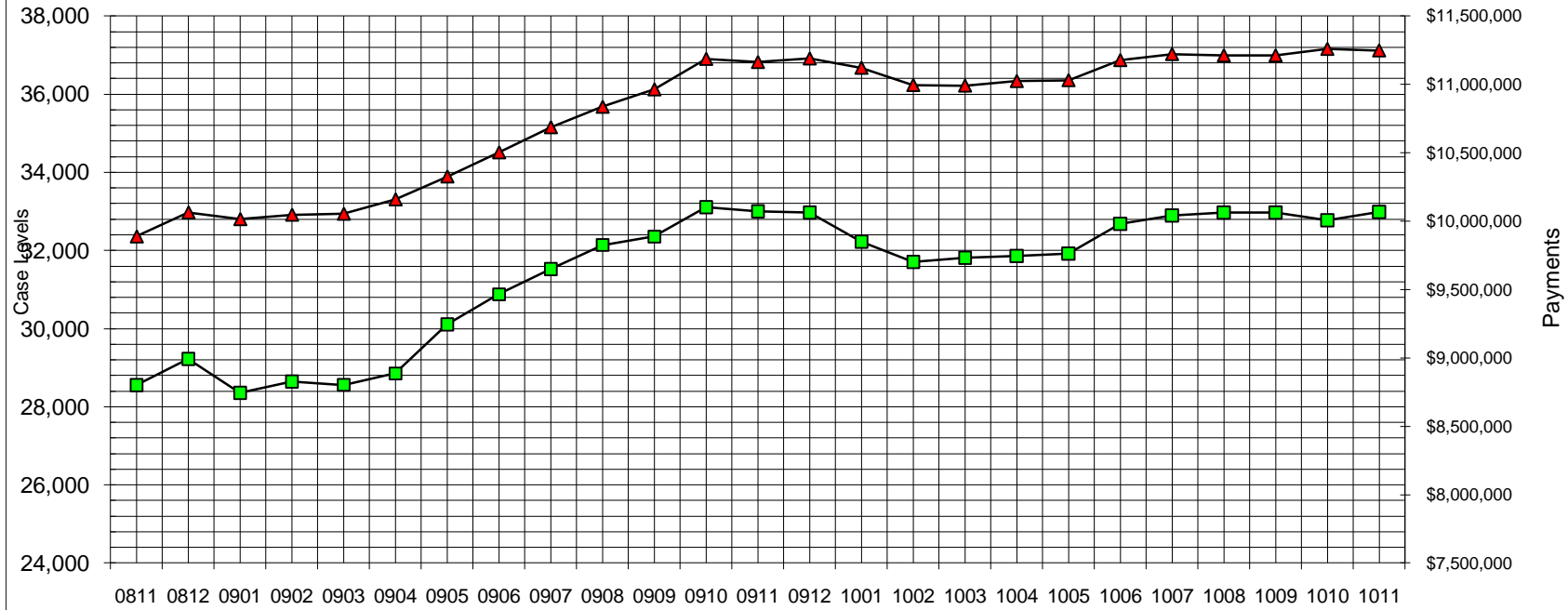
Auxiliary Grants Programs Cases & Payments



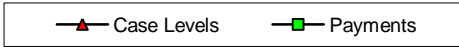
Adult Family Care Cases vs Cost-Per-Case



TANF Cases & Payments



Monthly Comparisons [NOVEMBER'10]



GENERAL RELIEF Payments

