

DEPT. OF SOCIAL SERVICES-PAYMENTS AND AVERAGE GRANTS FOR WELFARE PROGRAMS

	DECEMBER '10	NOVEMBER '10	INC./DEC. PRI MON	% DIFF PRI MON	**YTD TOTAL	DECEMBER '09	INC/DEC PRIOR YR.	% INC/DEC PRIOR YR.
AUXILIARY GRANTS PROGRAMS								
RECIPIENTS	4,959	5,200	(241)	-5%	29,241	5,024	(65)	-1%
PAYMENTS	\$1,958,555	\$1,750,435	\$208,120	12%	\$11,180,118	\$1,885,021	\$73,534	4%
AVERAGE GRANT	\$395	\$337	\$58	17%	\$382	\$375	\$20	5%
ADULT FAMILY CARE								
RECIPIENTS	39	39	0	0%	228	29	10	34%
PAYMENTS	\$15,786	\$15,790	(\$4)	0%	\$97,594	\$12,172	\$3,614	30%
AVERAGE GRANT	\$405	\$405	(\$0)	0%	\$428	\$420	(\$15)	-4%
TEMPORARY ASSISTANCE FOR NEEDY FAMILIES								
RECIPIENTS-TOTAL	85,506	86,295	(789)	-1%	517,513	86,760	(463)	-1%
TANF	76,736	77,583	(847)	-1%	465,127	77,920	(1,184)	-2%
TANF-UNEMPLOYED PARENTS	8,770	8,712	58	1%	52,386	8,840	(70)	-1%
1/EMERGENCY ASSISTANCE	2	2	0	0%	26	5	(3)	-60%
PAYMENTS-TOTAL	\$10,927,971	\$11,025,564	(\$97,592)	-1%	\$66,001,266	\$11,037,401	(\$109,430)	-1%
TANF	\$9,956,520	\$10,066,597	(\$110,078)	-1%	\$60,198,166	\$10,062,690	(\$106,171)	-1%
TANF-UNEMPLOYED PARENTS	\$969,778	\$958,739	\$11,038	1%	\$5,797,033	\$972,746	(\$2,968)	0%
EMERGENCY ASSISTANCE	\$1,674	\$227	\$1,447	637%	\$6,066	\$1,965	(\$291)	-15%
AVERAGE GRANT-TOTAL	\$128	\$128	\$0	0%	\$128	\$127	\$1	0%
AVERAGE MONEY PAYMENTS	\$130	\$130	(\$0)	0%	\$129	\$129	\$1	0%
AVERAGE TANF-UNEMPLOYED PARENTS	\$111	\$110	\$1	0%	\$111	\$110	\$1	0%
AVERAGE EMERGENCY ASSISTANCE	\$837	\$114	\$723	637%	\$233	\$393	\$444	113%
TITLE IV-E								
ADOPTION SUBSIDY- RECIPIENTS	5,437	5,923	(486)	-8%	32,979	4,879	558	11%
ADOPTION SUBSIDY - PAYMENTS	\$3,639,479	\$3,719,461	(\$79,982)	-2%	\$21,843,929	\$3,201,262	\$438,217	14%
AVERAGE ADOPTION SUBSIDY	\$669	\$628	\$41	7%	\$662	\$656	\$13	2%
SPECIAL NEEDS ADOPTION								
SPECIAL NEEDS ADOPTION - RECIPIENTS	5,087	5,593	(506)	-9%	31,336	5,180	(93)	-2%
SPECIAL NEEDS ADOPTION - PAYMENTS	\$3,776,931	\$3,671,124	\$105,807	3%	\$22,585,672	\$3,721,984	\$54,946	1%
AVERAGE SPECIAL NEEDS ADOPTION	\$742	\$656	\$86	13%	\$721	\$719	\$24	3%
GENERAL RELIEF								
PAYMENTS-TOTAL	\$289,428	\$355,742	(\$66,314)	-19%	\$1,590,817	\$472,764	(\$183,336)	-39%

1/ INCLUDES 2 RECIPIENTS IN DECEMBER AND 2 IN NOVEMBER WHO ALSO REC'D MONEY PAYMENTS

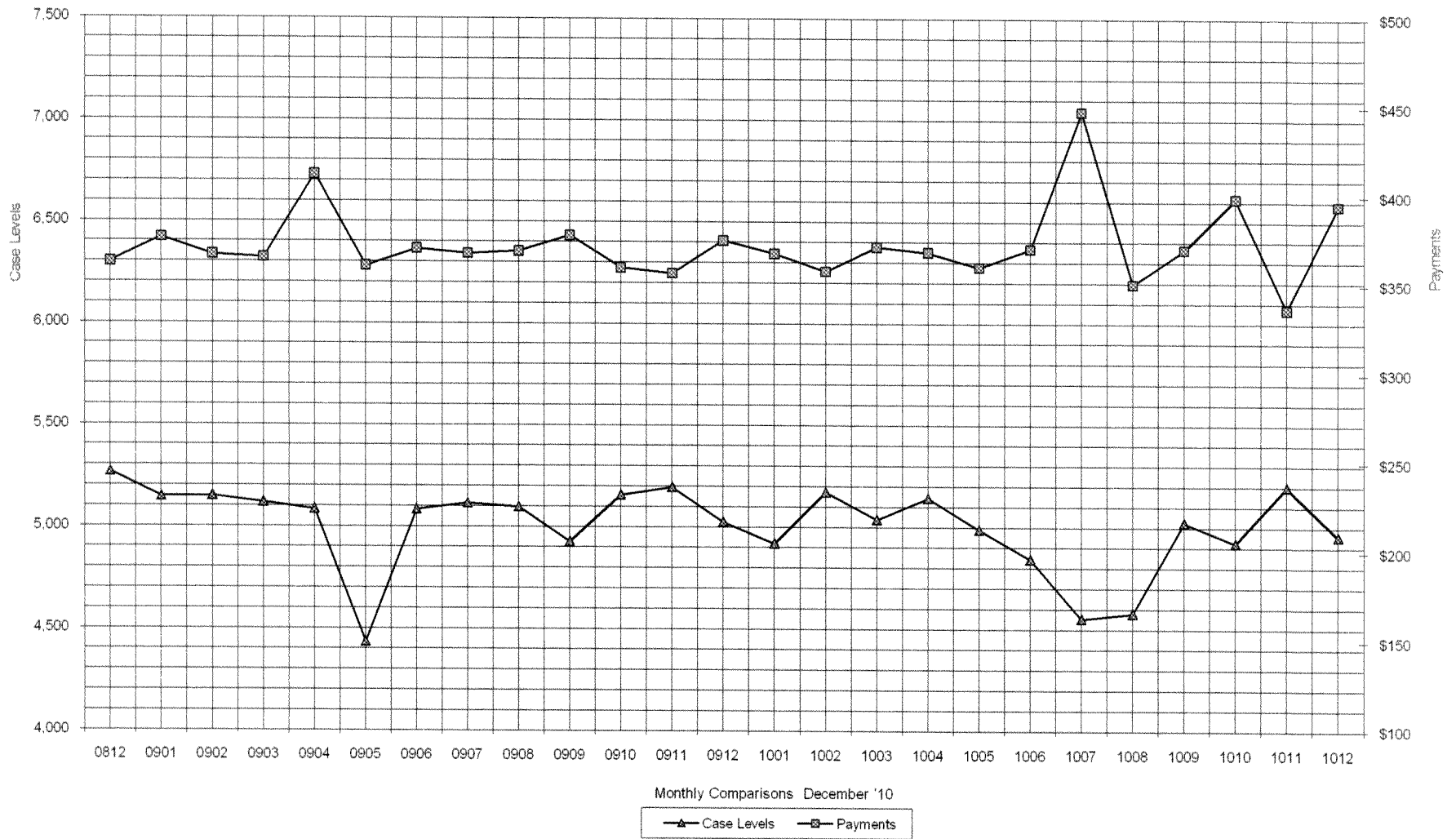
** YEAR TO DATE TOTAL: THE RECIPIENT FIGURES DO NOT REPRESENT TRUE COUNTS AS THE RECIPIENTS ARE GENERALLY THE SAME EVERY MONTH. THE YEAR TO DATE DOLLAR FIGURES ARE ACCURATE.

ARRA amounts are included in the payment amounts

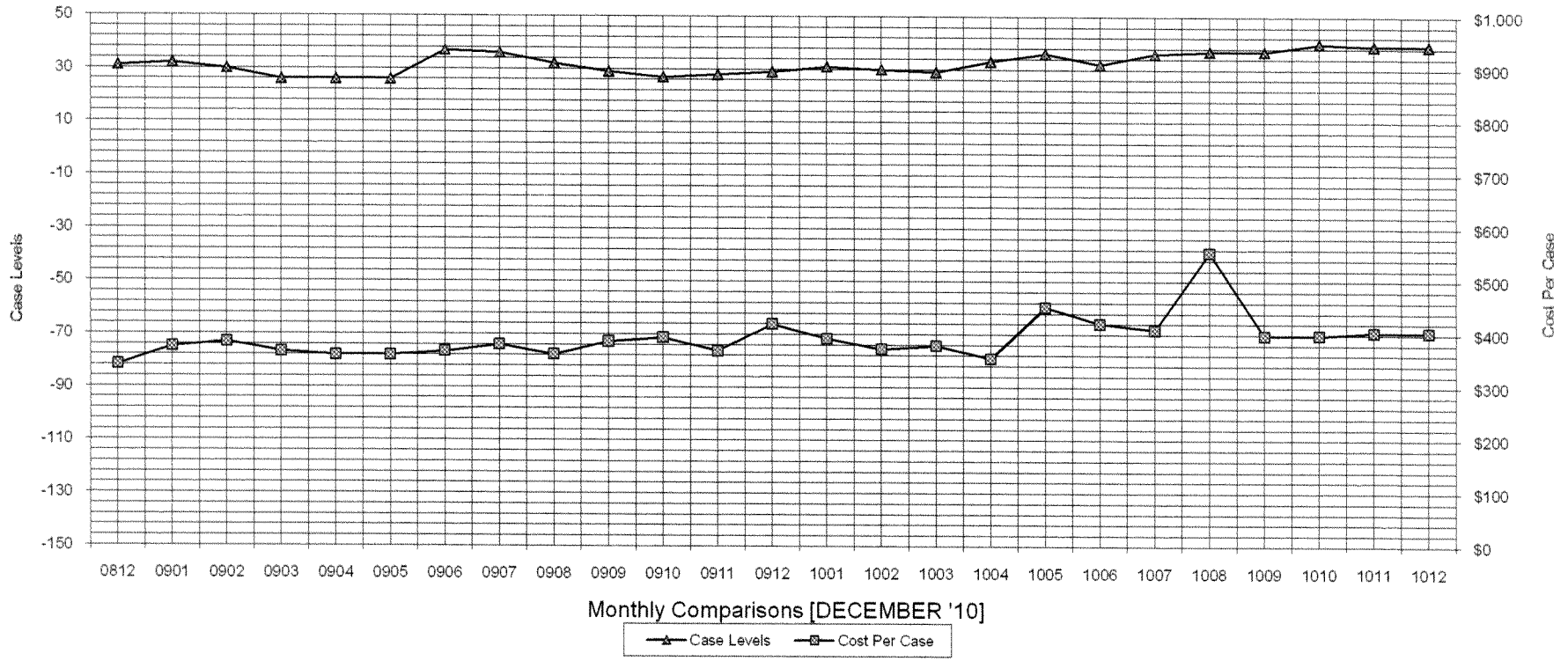
General Disclaimer: Unless specifically stated otherwise, case count numbers indicated in this report(s) stem from amounts entered by local personnel into applicable ADAPT and LASER systems; therefore, all reviewers/users of this report understand that the accuracy of such case count numbers is contingent on the respective numbers entered by local personnel. Any subsequent liabilities associated with incorrect amounts being entered into the noted systems rests solely with each locality.

Effective March 2008 a difference method of calculating TANF & TANF-UP information was established.

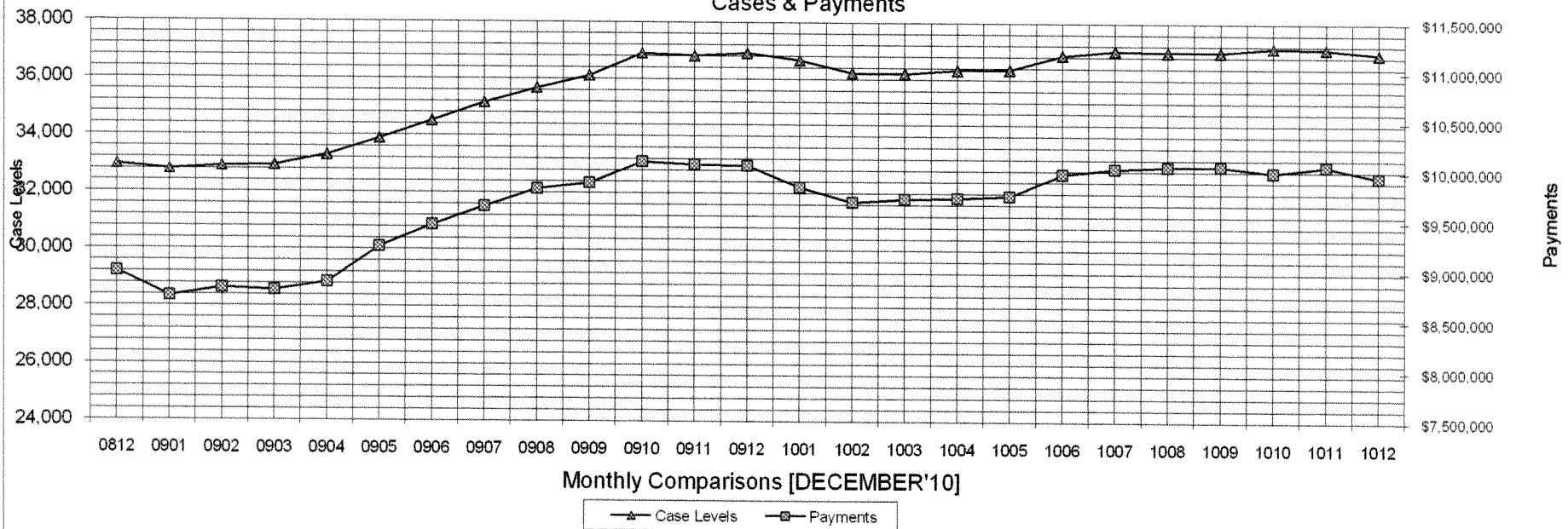
Auxiliary Grants Programs Cases & Payments



Adult Family Care Cases vs Cost-Per-Case



TANF Cases & Payments



GENERAL RELIEF
Payments

