

**DEPT. OF SOCIAL SERVICES-PAYMENTS AND AVERAGE GRANTS FOR WELFARE PROGRAMS**

	SEPTEMBER '11	AUGUST '11	INC./DEC. PRI MON	% DIFF PRI MON	**YTD TOTAL	SEPTEMBER '10	INC/DEC PRIOR YR.	% INC/DEC PRIOR YR.
<b>AUXILIARY GRANTS PROGRAMS</b>								
RECIPIENTS	4,761	4,803	(42)	-1%	14,405	5,024	(263)	-5%
PAYMENTS	\$1,797,811	\$1,896,461	(\$98,650)	-5%	\$5,536,296	\$1,860,417	(\$62,606)	-3%
AVERAGE GRANT	\$378	\$395	(\$17)	-4%	\$384	\$370	\$7	2%
<b>ADULT FAMILY CARE</b>								
RECIPIENTS	42	42	0	0%	123	37	5	14%
PAYMENTS	\$18,919	\$17,942	\$977	5%	\$53,711	\$14,754	\$4,165	28%
AVERAGE GRANT	\$450	\$427	\$23	5%	\$437	\$399	\$52	13%
<b>TEMPORARY ASSISTANCE FOR NEEDY FAMILIES</b>								
RECIPIENTS-TOTAL	80,529	80,594	(65)	0%	241,601	84,992	(4,392)	-5%
TANF	72,785	72,718	67	0%	218,142	77,744	(4,959)	-6%
TANF-UNEMPLOYED PARENTS	7,744	7,876	(132)	-2%	23,459	7,248	496	7%
1/EMERGENCY ASSISTANCE	4	6	(2)	-33%	10	7	(3)	-43%
PAYMENTS-TOTAL	\$9,785,468	\$9,808,355	(\$22,888)	0%	\$29,366,768	\$11,042,952	(\$1,257,484)	-11%
TANF	\$8,968,625	\$8,986,913	(\$18,288)	0%	\$26,908,653	\$10,064,876	(\$1,096,251)	-11%
TANF-UNEMPLOYED PARENTS	\$815,283	\$820,642	(\$5,359)	-1%	\$2,455,756	\$976,849	(\$161,566)	-17%
EMERGENCY ASSISTANCE	\$1,560	\$800	\$760	95%	\$2,360	\$1,227	\$333	27%
AVERAGE GRANT-TOTAL	\$122	\$122	(\$0)	0%	\$122	\$130	(\$8)	-6%
AVERAGE MONEY PAYMENTS	\$123	\$124	(\$0)	0%	\$123	\$129	(\$6)	-5%
AVERAGE TANF-UNEMPLOYED PARENTS	\$105	\$104	\$1	1%	\$105	\$135	(\$29)	-22%
AVERAGE EMERGENCY ASSISTANCE	\$390	\$133	\$257	192%	\$236	\$175	\$215	122%
<b>TITLE IV-E</b>								
ADOPTION SUBSIDY- RECIPIENTS	5,835	5,331	504	9%	17,052	5,579	256	5%
ADOPTION SUBSIDY - PAYMENTS	\$4,466,802	\$3,818,154	\$648,648	17%	\$12,345,621	\$3,616,500	\$850,302	24%
AVERAGE ADOPTION SUBSIDY	\$766	\$716	\$49	7%	\$724	\$648	\$117	18%
<b>SPECIAL NEEDS ADOPTION</b>								
SPECIAL NEEDS ADOPTION - RECIPIENTS	4,890	4,835	55	1%	14,835	5,502	(612)	-11%
SPECIAL NEEDS ADOPTION - PAYMENTS	\$4,117,766	\$3,816,138	\$301,628	8%	\$12,002,470	\$3,629,056	\$488,710	13%
AVERAGE SPECIAL NEEDS ADOPTION	\$842	\$789	\$53	7%	\$809	\$660	\$182	28%
<b>GENERAL RELIEF</b>								
PAYMENTS-TOTAL	\$188,103	\$278,185	(\$90,081)	-32%	\$744,473	\$237,001	(\$48,898)	-21%

1/ INCLUDES 4 RECIPIENTS IN AUGUST AND 6 IN JULY WHO ALSO REC'D MONEY PAYMENTS

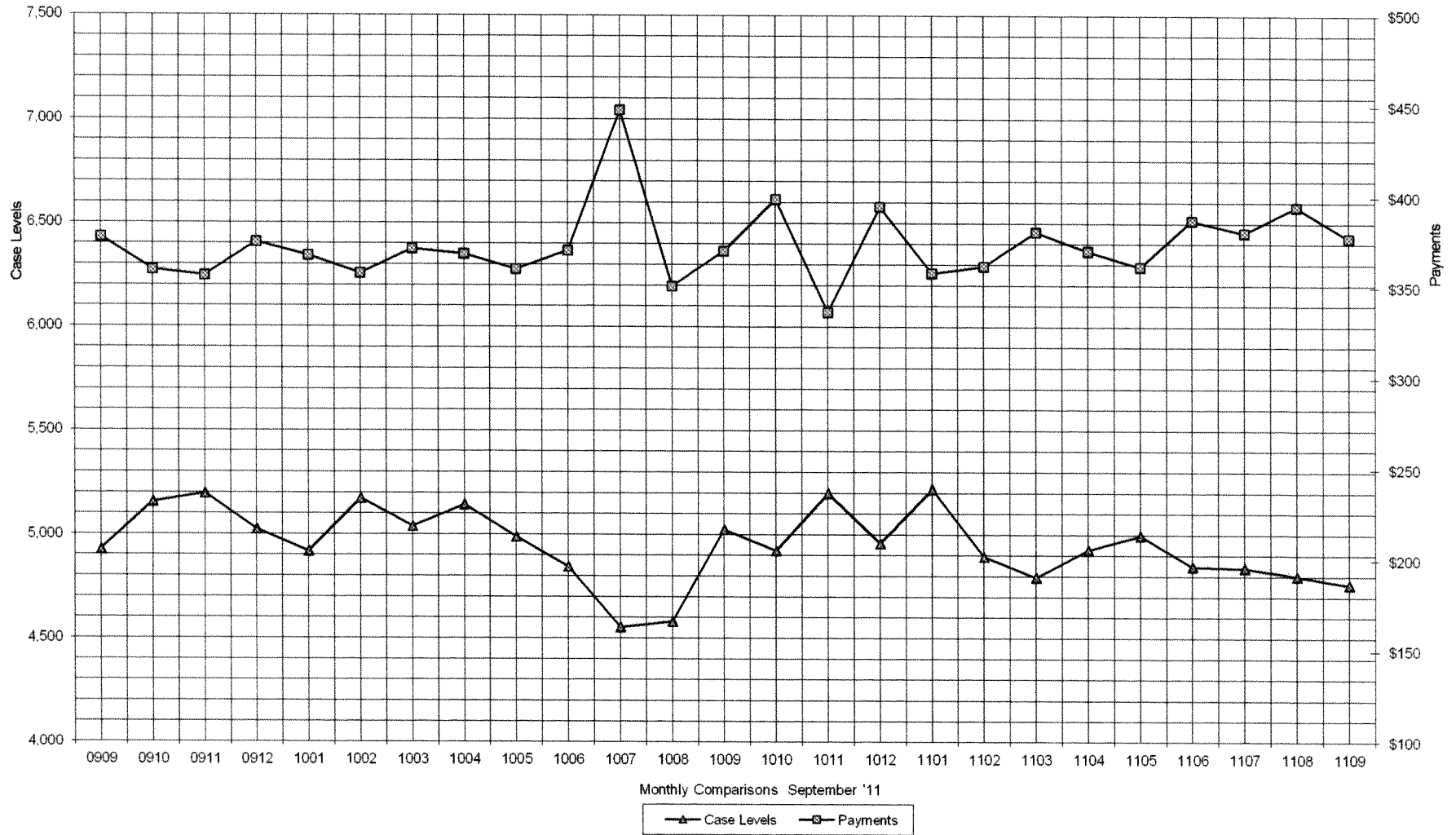
\*\* YEAR TO DATE TOTAL: THE RECIPIENT FIGURES DO NOT REPRESENT TRUE COUNTS AS THE RECIPIENTS ARE GENERALLY THE SAME EVERY MONTH. THE YEAR TO DATE DOLLAR FIGURES ARE ACCURATE.

ARRA amounts are included in the payment amounts

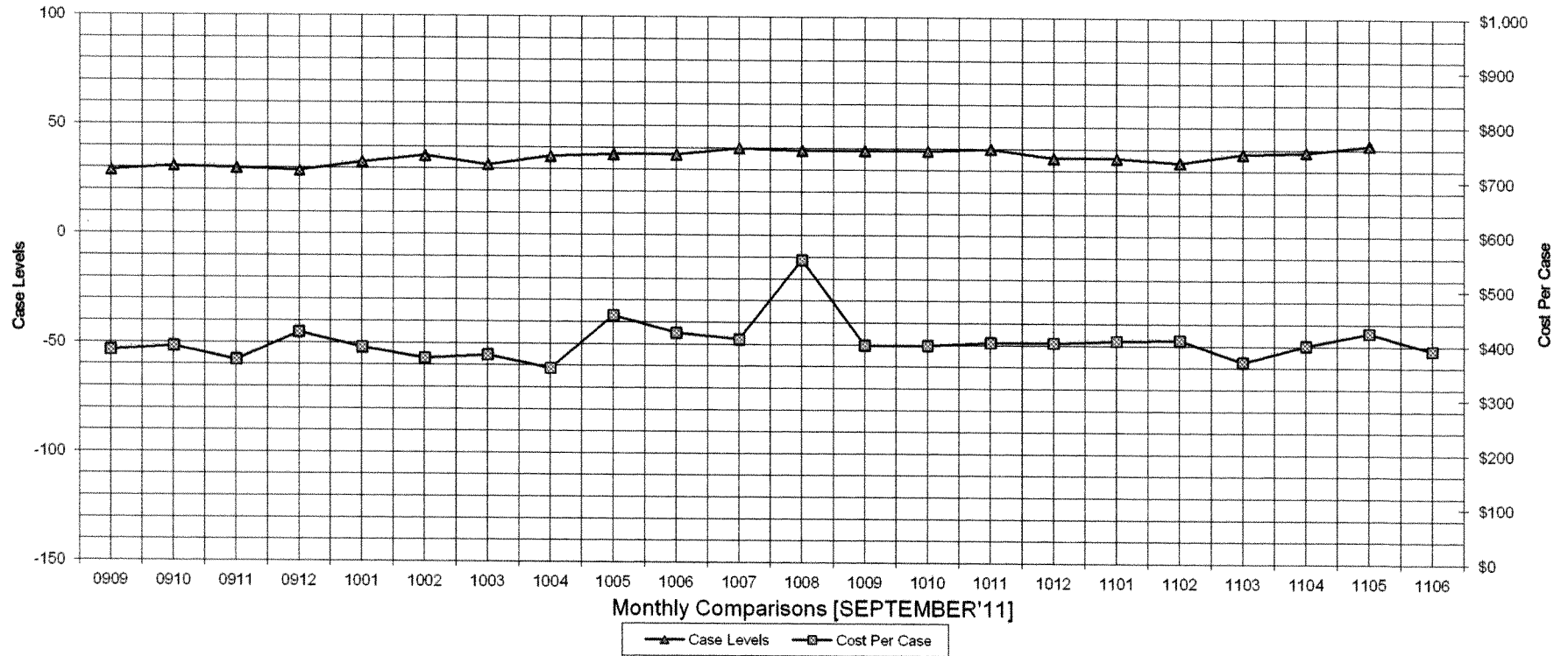
General Disclaimer: Unless specifically stated otherwise, case count numbers indicated in this report(s) stem from amounts entered by local personnel into applicable ADAPT and LASER systems; therefore, all reviewers/users of this report understand that the accuracy of such case count numbers is contingent on the respective numbers entered by local personnel. Any subsequent liabilities associated with incorrect amounts being entered into the noted systems rests solely with each locality

Effective March 2008 a difference method of calculating TANF & TANF-UP information was established.

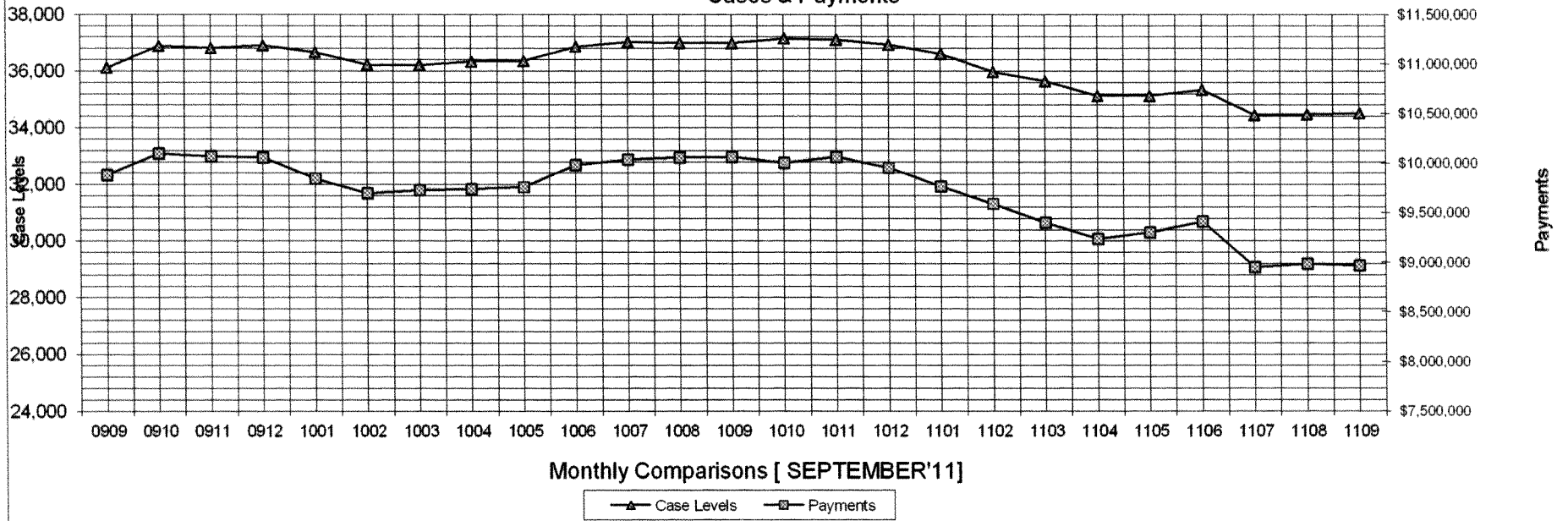
### Auxiliary Grants Programs Cases & Payments



### Adult Family Care Cases vs Cost-Per-Case



### TANF Cases & Payments



Monthly Comparisons [ SEPTEMBER'11 ]

▲ Case Levels    □ Payments

### GENERAL RELIEF Payments

