

**DEPT. OF SOCIAL SERVICES-PAYMENTS AND AVERAGE GRANTS FOR WELFARE PROGRAMS**

	MARCH '11	FEBRUARY '11	INC./DEC. PRI MON	% DIFF PRI MON	**YTD TOTAL	MARCH '10	INC/DEC PRIOR YR.	% INC/DEC PRIOR YR.
<b>AUXILIARY GRANTS PROGRAMS</b>								
RECIPIENTS	4,796	4,895	(99)	-2%	44,152	5,039	(243)	-5%
PAYMENTS	\$1,826,651	\$1,772,134	\$54,517	3%	\$16,649,273	\$1,872,589	(\$45,938)	-2%
AVERAGE GRANT	\$381	\$362	\$19	5%	\$377	\$372	\$9	2%
<b>ADULT FAMILY CARE</b>								
RECIPIENTS	36	40	(4)	-10%	343	29	7	24%
PAYMENTS	\$13,353	\$16,434	(\$3,082)	-19%	\$143,330	\$10,989	\$2,364	22%
AVERAGE GRANT	\$371	\$411	(\$40)	-10%	\$418	\$379	(\$8)	-2%
<b>TEMPORARY ASSISTANCE FOR NEEDY FAMILIES</b>								
RECIPIENTS-TOTAL	81,353	82,812	(1,459)	-2%	766,549	84,889	(2,063)	-2%
TANF	73,106	74,324	(1,218)	-2%	688,573	76,024	(2,918)	-4%
TANF-UNEMPLOYED PARENTS	8,247	8,488	(241)	-3%	77,976	8,865	(618)	-7%
1/EMERGENCY ASSISTANCE	11	14	(3)	0%	51	15	(4)	-27%
PAYMENTS-TOTAL	\$10,300,699	\$10,516,179	(\$215,480)	-2%	\$97,544,829	\$10,694,031	(\$393,332)	-4%
TANF	\$9,401,464	\$9,591,635	(\$190,171)	-2%	\$88,962,050	\$9,730,849	(\$329,385)	-3%
TANF-UNEMPLOYED PARENTS	\$895,775	\$920,286	(\$24,511)	-3%	\$8,568,994	\$958,197	(\$62,422)	-7%
EMERGENCY ASSISTANCE	\$3,460	\$4,258	(\$798)	0%	\$13,785	\$4,986	(\$1,526)	-31%
AVERAGE GRANT-TOTAL	\$127	\$127	(\$0)	0%	\$127	\$126	\$1	1%
AVERAGE MONEY PAYMENTS	\$129	\$129	(\$0)	0%	\$129	\$128	\$1	0%
AVERAGE TANF-UNEMPLOYED PARENTS	\$109	\$108	\$0	0%	\$110	\$108	\$1	0%
AVERAGE EMERGENCY ASSISTANCE	\$10	\$8	\$2	0%	\$270	\$332	(\$323)	-97%
<b>TITLE IV-E</b>								
ADOPTION SUBSIDY- RECIPIENTS	5,429	5,475	(46)	-1%	49,408	4,971	458	9%
ADOPTION SUBSIDY - PAYMENTS	\$3,259,817	\$3,632,888	(\$373,070)	-10%	\$32,420,518	\$3,303,964	(\$44,147)	-1%
AVERAGE ADOPTION SUBSIDY	\$600	\$664	(\$63)	-10%	\$656	\$665	(\$64)	-10%
<b>SPECIAL NEEDS ADOPTION</b>								
SPECIAL NEEDS ADOPTION - RECIPIENTS	5,038	5,156	(118)	-2%	46,592	4,860	178	4%
SPECIAL NEEDS ADOPTION - PAYMENTS	\$4,181,649	\$3,929,372	\$252,277	6%	\$34,531,438	\$3,614,305	\$567,344	16%
AVERAGE SPECIAL NEEDS ADOPTION	\$830	\$762	\$68	9%	\$741	\$744	\$86	12%
<b>GENERAL RELIEF</b>								
PAYMENTS-TOTAL	\$279,440	\$309,256	(\$29,816)	-10%	\$2,545,538	\$351,217	(\$71,777)	-20%

1/ INCLUDES 11 RECIPIENTS IN MARCH AND 14 IN FEBRUARY WHO ALSO REC'D MONEY PAYMENTS

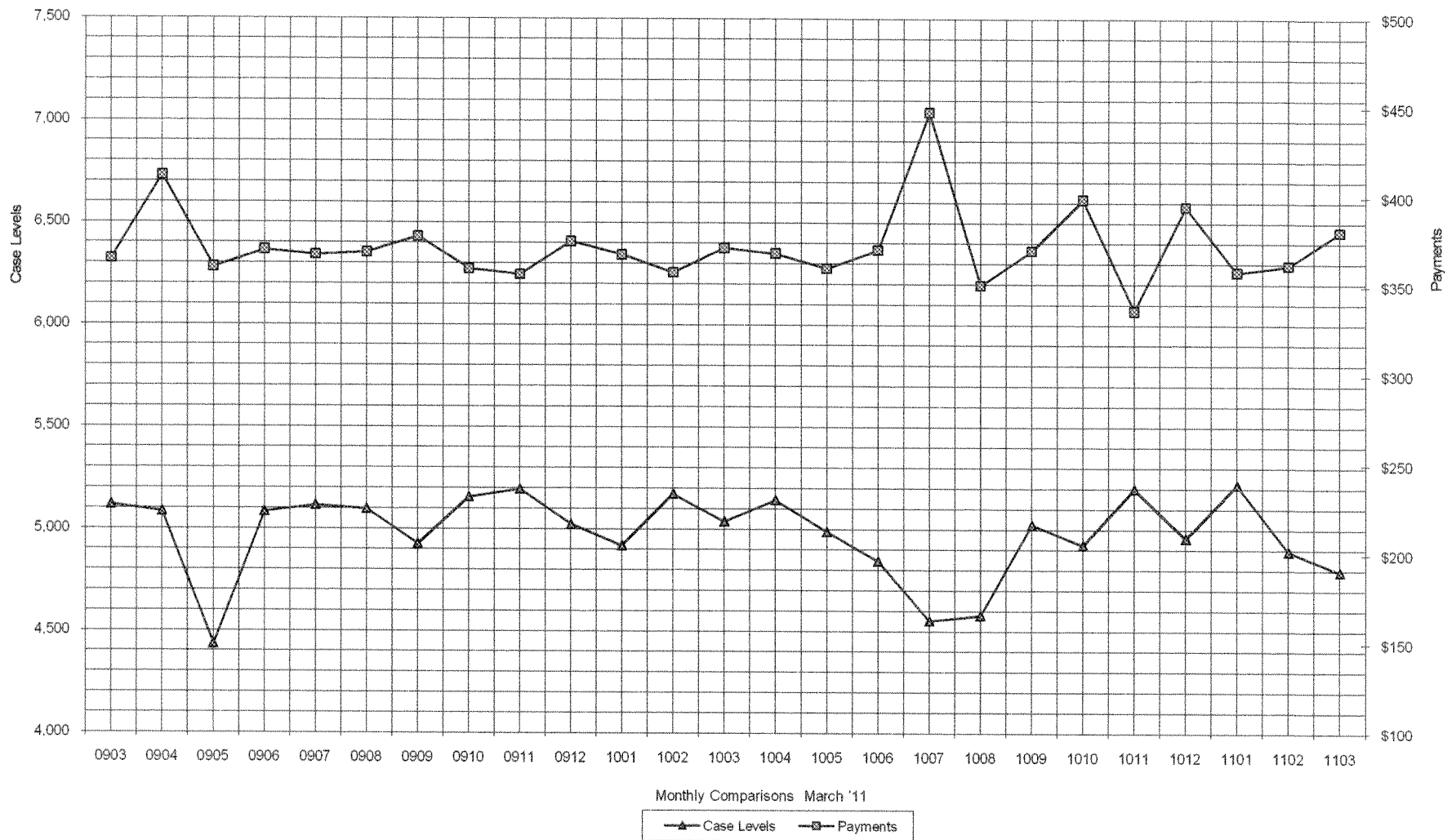
\*\* YEAR TO DATE TOTAL: THE RECIPIENT FIGURES DO NOT REPRESENT TRUE COUNTS AS THE RECIPIENTS ARE GENERALLY THE SAME EVERY MONTH. THE YEAR TO DATE DOLLAR FIGURES ARE ACCURATE.

ARRA amounts are included in the payment amounts

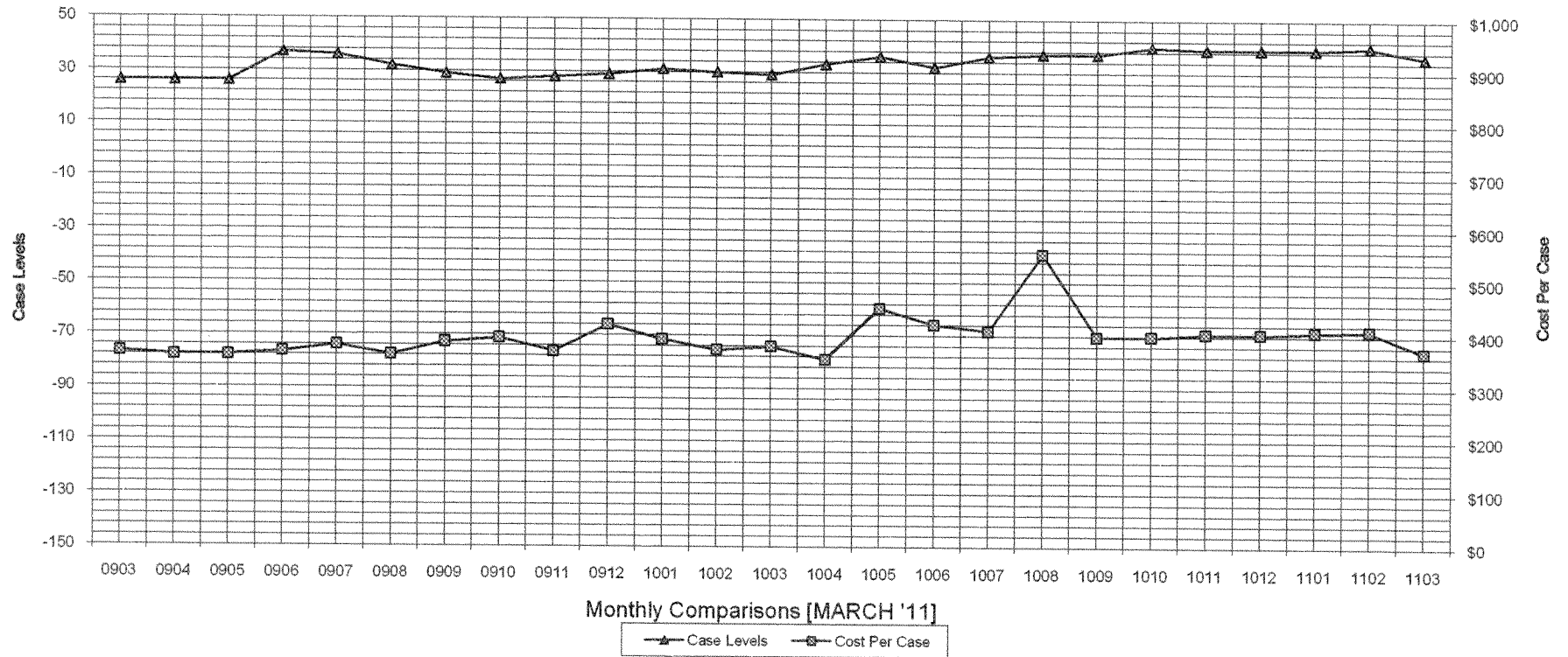
General Disclaimer: Unless specifically stated otherwise, case count numbers indicated in this report(s) stem from amounts entered by local personnel into applicable ADAPT and LASER systems; therefore, all reviewers/users of this report understand that the accuracy of such case count numbers is contingent on the respective numbers entered by local personnel. Any subsequent liabilities associated with incorrect amounts being entered into the noted systems rests solely with each locality.

Effective March 2008 a difference method of calculating TANF & TANF-UP information was established.

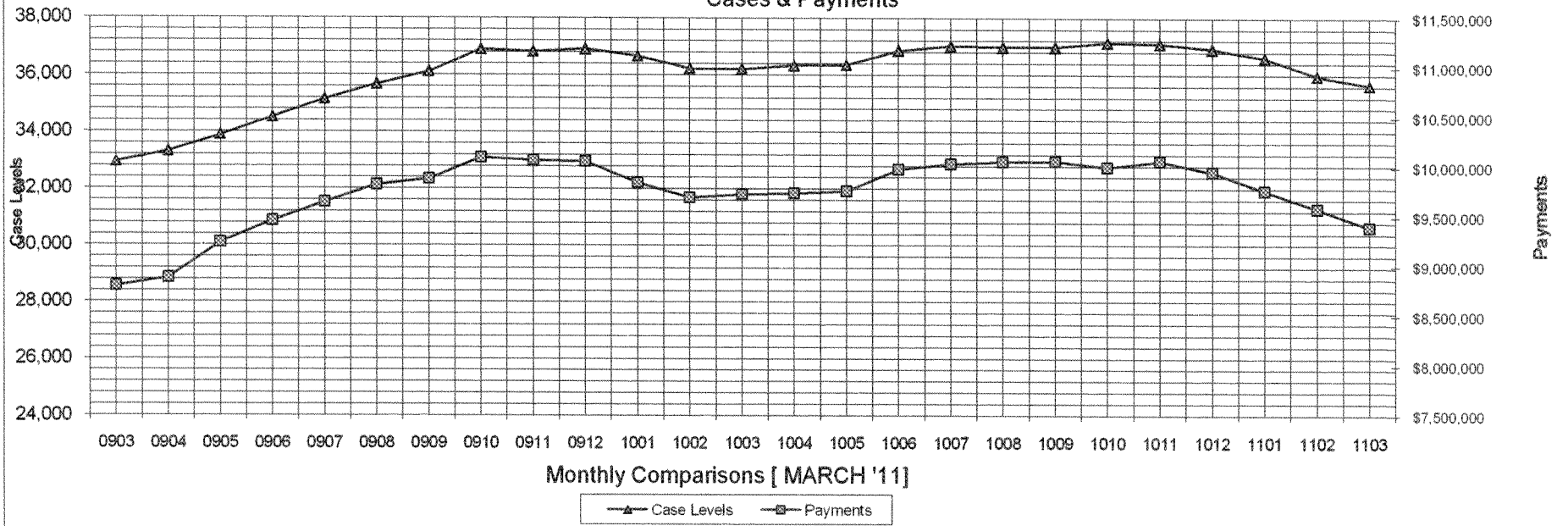
### Auxiliary Grants Programs Cases & Payments



### Adult Family Care Cases vs Cost-Per-Case



### TANF Cases & Payments



GENERAL RELIEF  
Payments

