

DEPT. OF SOCIAL SERVICES-PAYMENTS AND AVERAGE GRANTS FOR WELFARE PROGRAMS

	MAY '11	APRIL '11	INC./DEC. PRI MON	% DIFF PRI MON	**YTD TOTAL	MAY '10	INC/DEC PRIOR YR.	% INC/DEC PRIOR YR.
AUXILIARY GRANTS PROGRAMS								
RECIPIENTS	4,997	4,929	68	1%	54,078	4,989	8	0%
PAYMENTS	\$1,807,349	\$1,836,027	(\$28,678)	-2%	\$20,292,649	\$1,797,688	\$9,661	1%
AVERAGE GRANT	\$362	\$372	(\$11)	-3%	\$375	\$360	\$1	0%
ADULT FAMILY CARE								
RECIPIENTS	34	36	(2)	-6%	413	36	(2)	-6%
PAYMENTS	\$14,428	\$14,442	(\$13)	0%	\$172,200	\$16,279	(\$1,851)	-11%
AVERAGE GRANT	\$424	\$401	\$23	6%	\$417	\$452	(\$28)	-6%
TEMPORARY ASSISTANCE FOR NEEDY FAMILIES								
RECIPIENTS-TOTAL	80,163	80,306	(143)	0%	927,018	84,945	(4,633)	-5%
TANF	72,093	72,240	(147)	0%	832,906	76,380	(4,287)	-6%
TANF-UNEMPLOYED PARENTS	8,070	8,066	4	0%	94,112	8,565	(495)	-6%
1/EMERGENCY ASSISTANCE	5	6	(1)	-17%	62	9	(4)	-44%
PAYMENTS-TOTAL	\$10,168,511	\$10,097,355	\$71,156	1%	\$117,810,694	\$10,690,374	(\$521,863)	-5%
TANF	\$9,302,665	\$9,239,597	\$63,068	1%	\$107,504,312	\$9,762,269	(\$459,604)	-5%
TANF-UNEMPLOYED PARENTS	\$864,524	\$855,758	\$8,766	1%	\$10,289,275	\$927,018	(\$62,494)	-7%
EMERGENCY ASSISTANCE	\$1,322	\$2,000	(\$678)	-34%	\$17,107	\$1,087	\$235	22%
AVERAGE GRANT-TOTAL	\$127	\$126	\$1	1%	\$127	\$126	\$1	1%
AVERAGE MONEY PAYMENTS	\$129	\$128	\$1	1%	\$129	\$128	\$1	1%
AVERAGE TANF-UNEMPLOYED PARENTS	\$107	\$106	\$1	1%	\$109	\$108	(\$1)	-1%
AVERAGE EMERGENCY ASSISTANCE	\$21	\$18	\$4	21%	\$276	\$121	(\$99)	-82%
TITLE IV-E								
ADOPTION SUBSIDY- RECIPIENTS	5,904	5,621	283	5%	60,933	5,695	209	4%
ADOPTION SUBSIDY - PAYMENTS	\$3,880,459	\$3,786,389	\$94,069	2%	\$40,087,366	\$3,562,841	\$317,618	9%
AVERAGE ADOPTION SUBSIDY	\$657	\$674	(\$16)	-2%	\$658	\$626	\$32	5%
SPECIAL NEEDS ADOPTION								
SPECIAL NEEDS ADOPTION - RECIPIENTS	5,303	5,188	115	2%	57,083	5,067	236	5%
SPECIAL NEEDS ADOPTION - PAYMENTS	\$4,349,140	\$4,063,287	\$285,852	7%	\$42,943,865	\$3,757,806	\$591,334	16%
AVERAGE SPECIAL NEEDS ADOPTION	\$820	\$783	\$37	5%	\$752	\$742	\$79	11%
GENERAL RELIEF								
PAYMENTS-TOTAL	\$346,180	\$395,372	(\$49,192)	-12%	\$3,287,091	\$399,493	(\$53,313)	-13%

1/ INCLUDES 5 RECIPIENTS IN MAY AND 6 IN APRIL WHO ALSO REC'D MONEY PAYMENTS

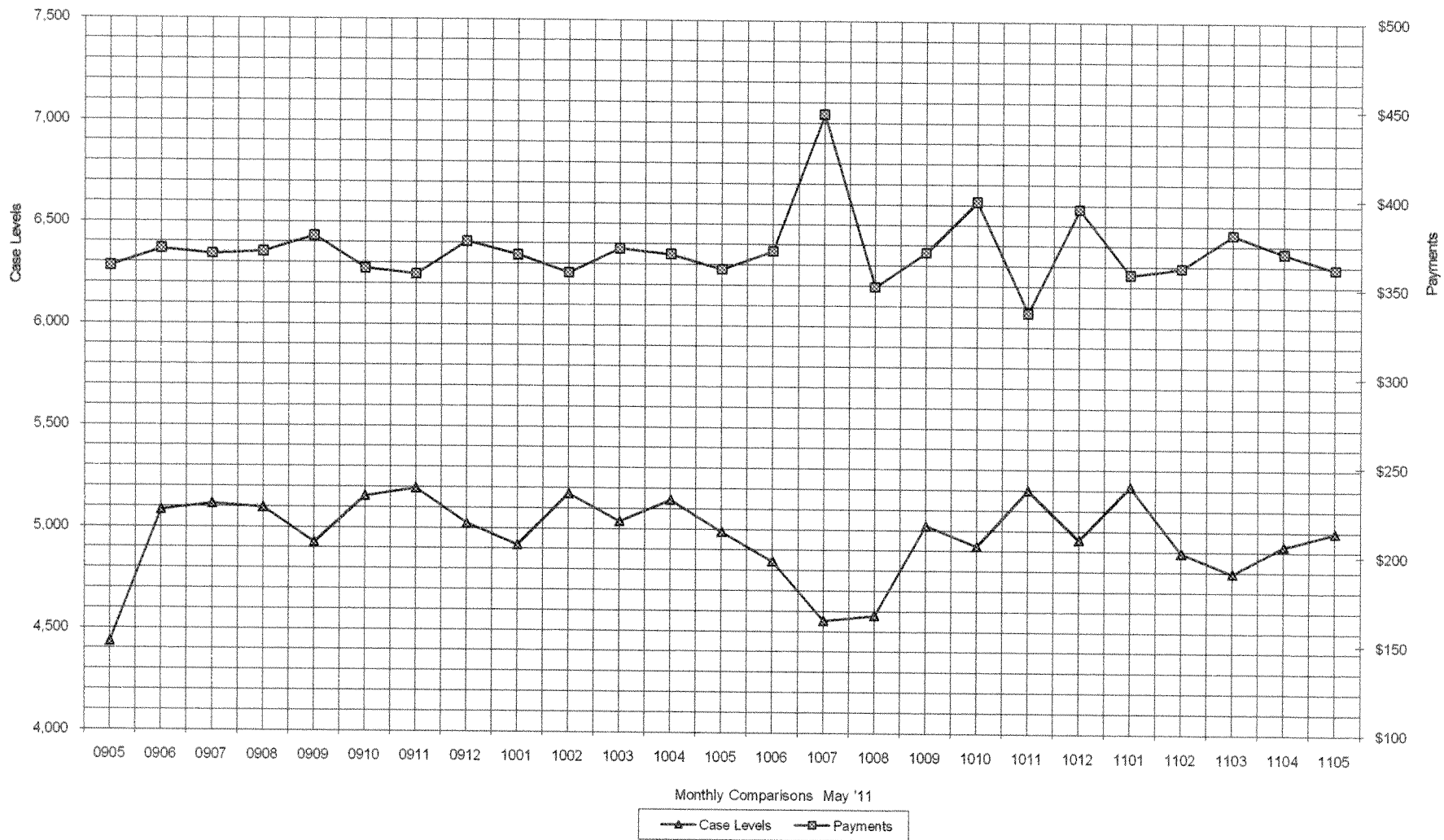
** YEAR TO DATE TOTAL: THE RECIPIENT FIGURES DO NOT REPRESENT TRUE COUNTS AS THE RECIPIENTS ARE GENERALLY THE SAME EVERY MONTH. THE YEAR TO DATE DOLLAR FIGURES ARE ACCURATE.

ARRA amounts are included in the payment amounts

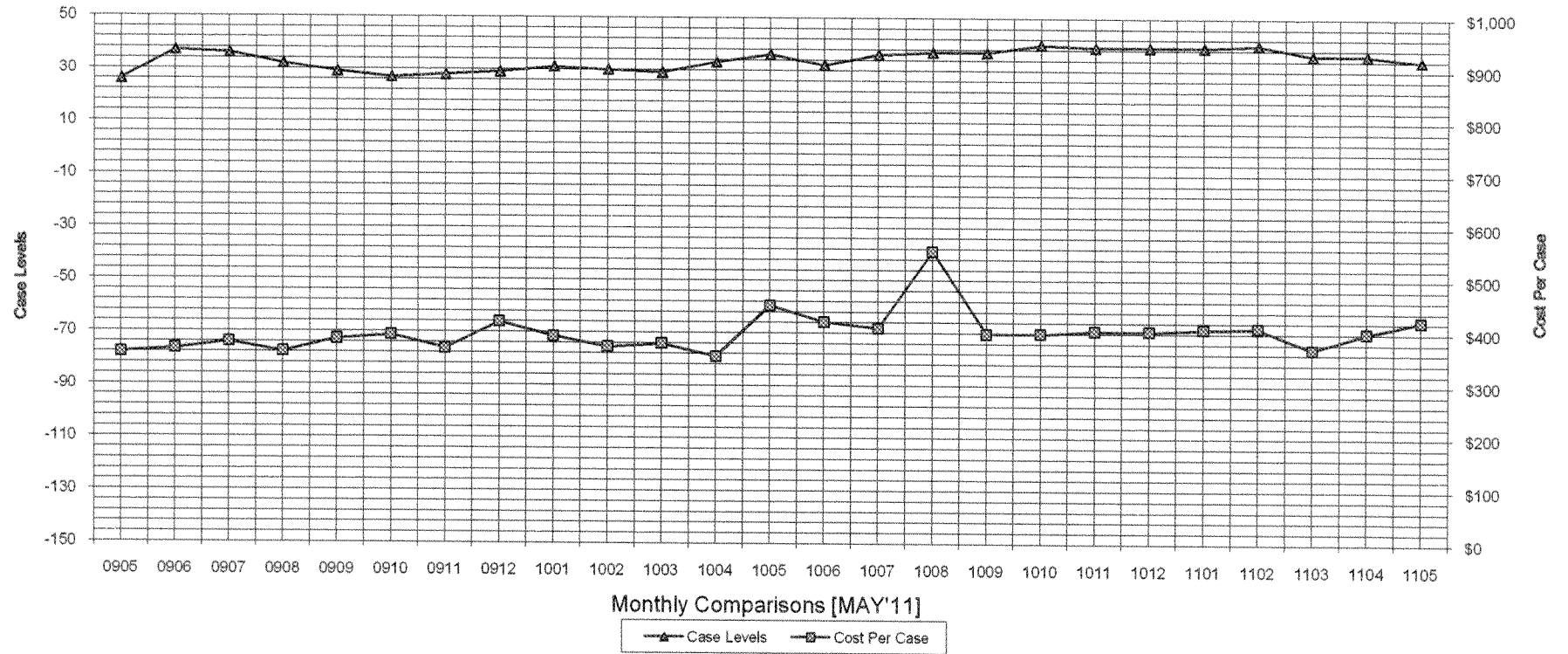
General Disclaimer: Unless specifically stated otherwise, case count numbers indicated in this report(s) stem from amounts entered by local personnel into applicable ADAPT and LASER systems; therefore, all reviewers/users of this report understand that the accuracy of such case count numbers is contingent on the respective numbers entered by local personnel. Any subsequent liabilities associated with incorrect amounts being entered into the noted systems rests solely with each locality.

Effective March 2008 a difference method of calculating TANF & TANF-UP information was established.

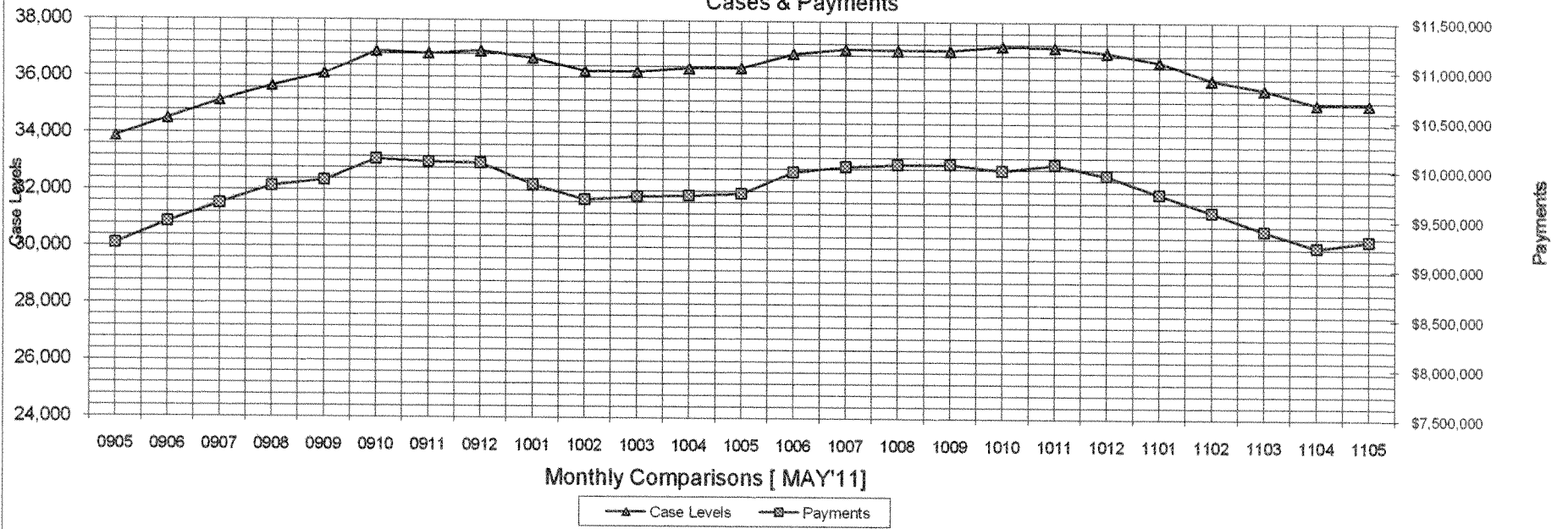
Auxiliary Grants Programs Cases & Payments



Adult Family Care Cases vs Cost-Per-Case



TANF Cases & Payments



GENERAL RELIEF Payments

