

DEPT. OF SOCIAL SERVICES-PAYMENTS AND AVERAGE GRANTS FOR WELFARE PROGRAMS

	AUGUST '11	JUNE '11	INC./DEC. PRI MON	% DIFF PRI MON	**YTD TOTAL	AUGUST '10	INC/DEC PRIOR YR.	% INC/DEC PRIOR YR.
AUXILIARY GRANTS PROGRAMS								
RECIPIENTS	4,803	4,841	(38)	-1%	9,644	4,580	223	5%
PAYMENTS	\$1,896,461	\$1,842,024	\$54,438	3%	\$3,738,485	\$1,607,000	\$289,462	18%
AVERAGE GRANT	\$395	\$381	\$14	4%	\$388	\$351	\$44	13%
ADULT FAMILY CARE								
RECIPIENTS	42	39	3	8%	81	37	5	14%
PAYMENTS	\$17,942	\$16,850	\$1,093	6%	\$34,792	\$20,554	(\$2,611)	-13%
AVERAGE GRANT	\$427	\$432	(\$5)	-1%	\$430	\$556	(\$128)	-23%
TEMPORARY ASSISTANCE FOR NEEDY FAMILIES								
RECIPIENTS-TOTAL	80,594	80,478	116	0%	161,072	86,291	(5,813)	-7%
TANF	72,718	72,639	79	0%	145,357	77,618	(4,900)	-6%
TANF-UNEMPLOYED PARENTS	7,876	7,839	37	0%	15,715	8,673	(797)	-9%
1/EMERGENCY ASSISTANCE	6	0	6	0%	6	3	3	100%
PAYMENTS-TOTAL	\$9,808,355	\$9,772,945	\$35,410	0%	\$19,581,300	\$11,039,316	(\$1,230,961)	-11%
TANF	\$8,986,913	\$8,953,115	\$33,798	0%	\$17,940,028	\$10,061,501	(\$1,074,588)	-11%
TANF-UNEMPLOYED PARENTS	\$820,642	\$819,830	\$812	0%	\$1,640,473	\$977,414	(\$156,772)	-16%
EMERGENCY ASSISTANCE	\$800	\$0	\$800	0%	\$800	\$401	\$399	100%
AVERAGE GRANT-TOTAL	\$122	\$121	\$0	0%	\$122	\$128	(\$6)	-5%
AVERAGE MONEY PAYMENTS	\$124	\$123	\$0	0%	\$123	\$130	(\$6)	-5%
AVERAGE TANF-UNEMPLOYED PARENTS	\$104	\$105	(\$0)	0%	\$104	\$113	(\$9)	-8%
AVERAGE EMERGENCY ASSISTANCE	\$133	\$0	\$133	0%	\$133	\$134	(\$0)	0%
TITLE IV-E								
ADOPTION SUBSIDY- RECIPIENTS	5,331	5,886	(555)	-9%	11,217	5,063	268	5%
ADOPTION SUBSIDY - PAYMENTS	\$3,818,154	\$4,060,665	(\$242,511)	-6%	\$7,878,819	\$3,286,078	\$532,076	16%
AVERAGE ADOPTION SUBSIDY	\$716	\$690	\$26	4%	\$702	\$649	\$67	10%
SPECIAL NEEDS ADOPTION								
SPECIAL NEEDS ADOPTION - RECIPIENTS	4,835	5,110	(275)	-5%	9,945	4,736	99	2%
SPECIAL NEEDS ADOPTION - PAYMENTS	\$3,816,138	\$4,068,567	(\$252,429)	-6%	\$7,884,704	\$3,414,013	\$402,125	12%
AVERAGE SPECIAL NEEDS ADOPTION	\$789	\$796	(\$7)	-1%	\$793	\$721	\$68	9%
GENERAL RELIEF								
PAYMENTS-TOTAL	\$278,185	\$278,185	\$0	0%	\$556,369	\$169,264	\$108,920	64%

1/ INCLUDES 0 RECIPIENTS IN JULY AND 0 IN JUNE WHO ALSO REC'D MONEY PAYMENTS

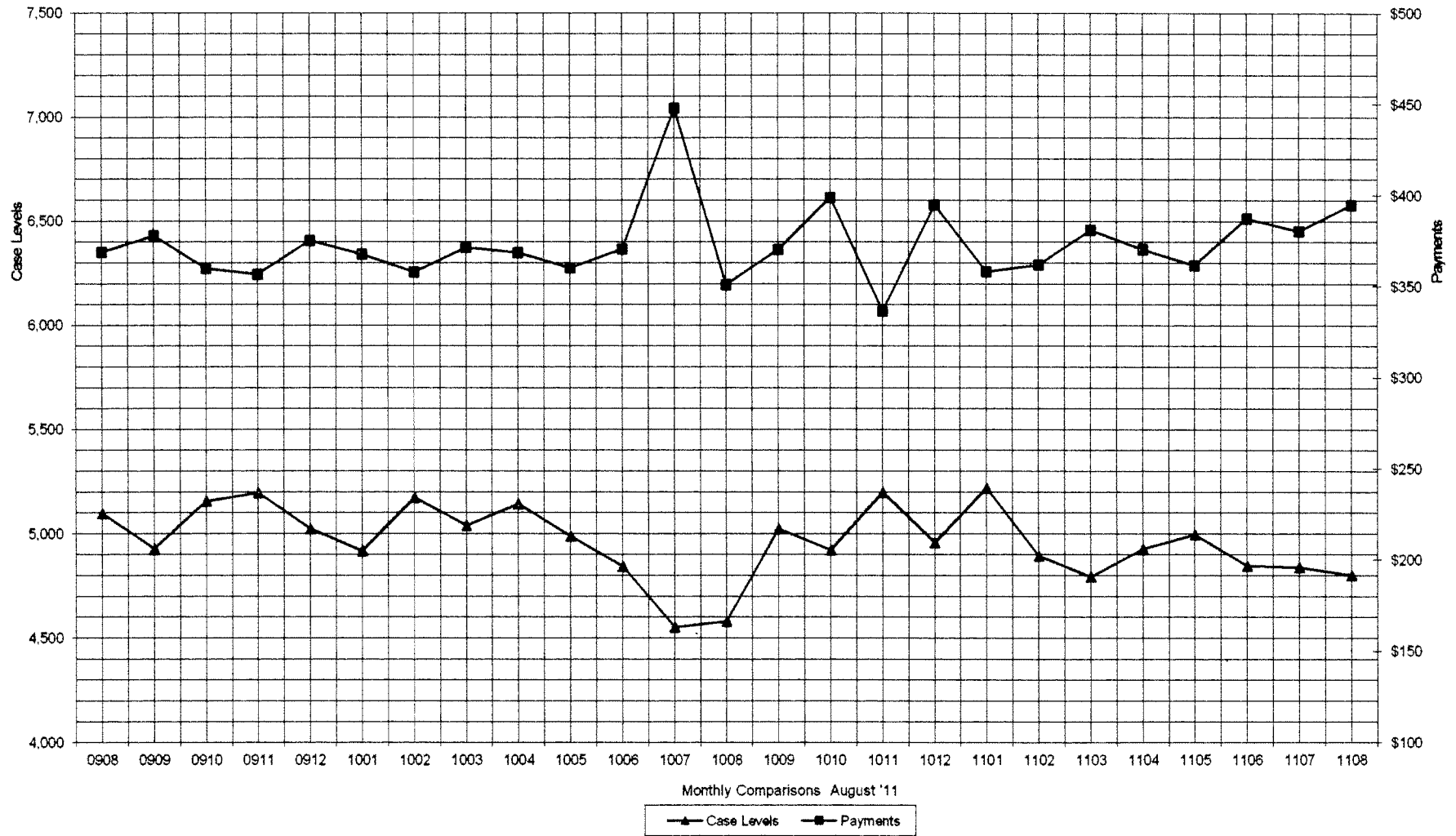
** YEAR TO DATE TOTAL: THE RECIPIENT FIGURES DO NOT REPRESENT TRUE COUNTS AS THE RECIPIENTS ARE GENERALLY THE SAME EVERY MONTH. THE YEAR TO DATE DOLLAR FIGURES ARE ACCURATE.

ARRA amounts are included in the payment amounts

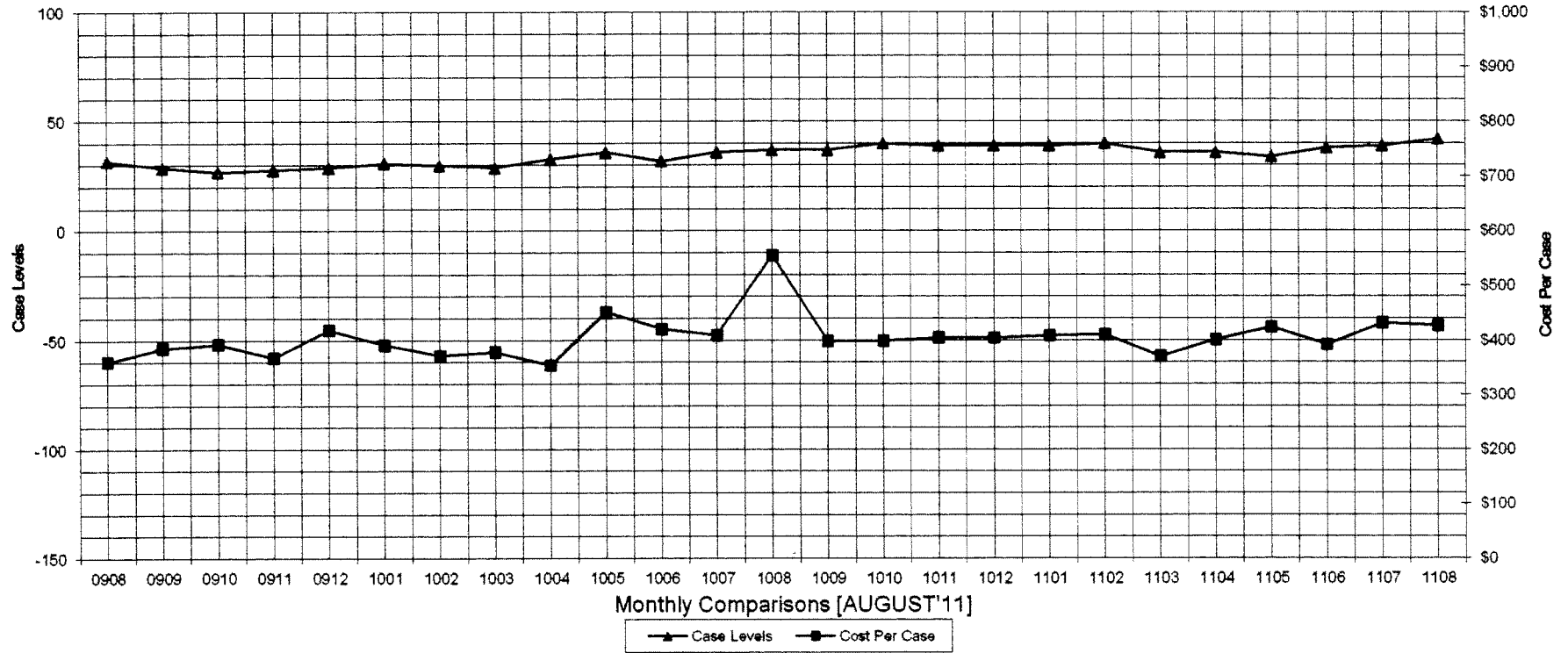
General Disclaimer: Unless specifically stated otherwise, case count numbers indicated in this report(s) stem from amounts entered by local personnel into applicable ADAPT and LASER systems; therefore, all reviewers/users of this report understand that the accuracy of such case count numbers is contingent on the respective numbers entered by local personnel. Any subsequent liabilities associated with incorrect amounts being entered into the noted systems rests solely with each locality.

Effective March 2008 a difference method of calculating TANF & TANF-UP information was established.

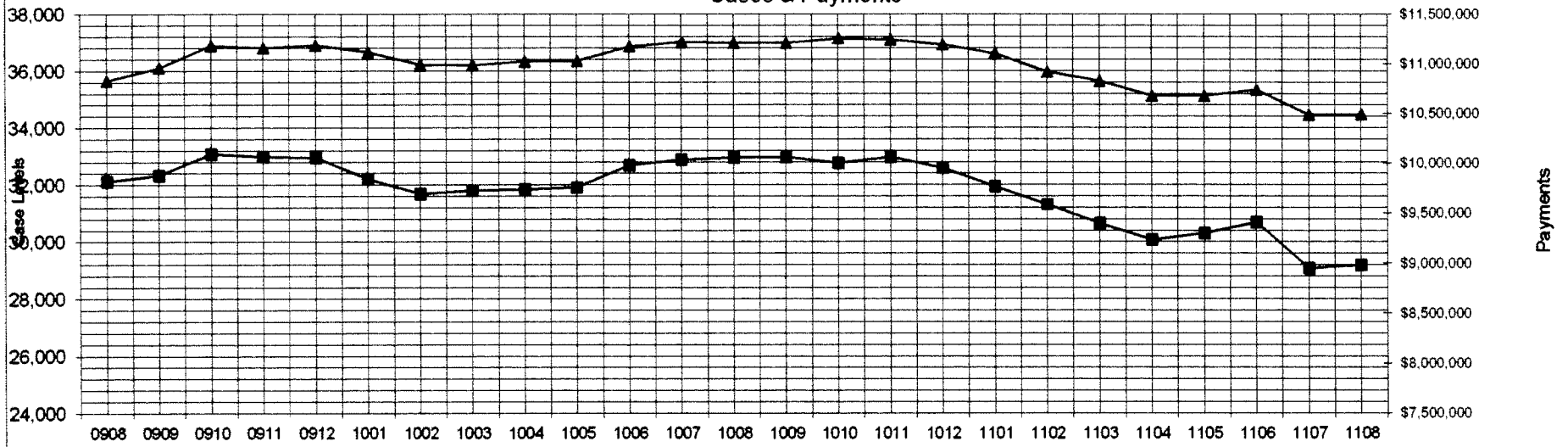
Auxiliary Grants Programs Cases & Payments



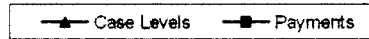
Adult Family Care
Cases vs Cost-Per-Case



TANF Cases & Payments

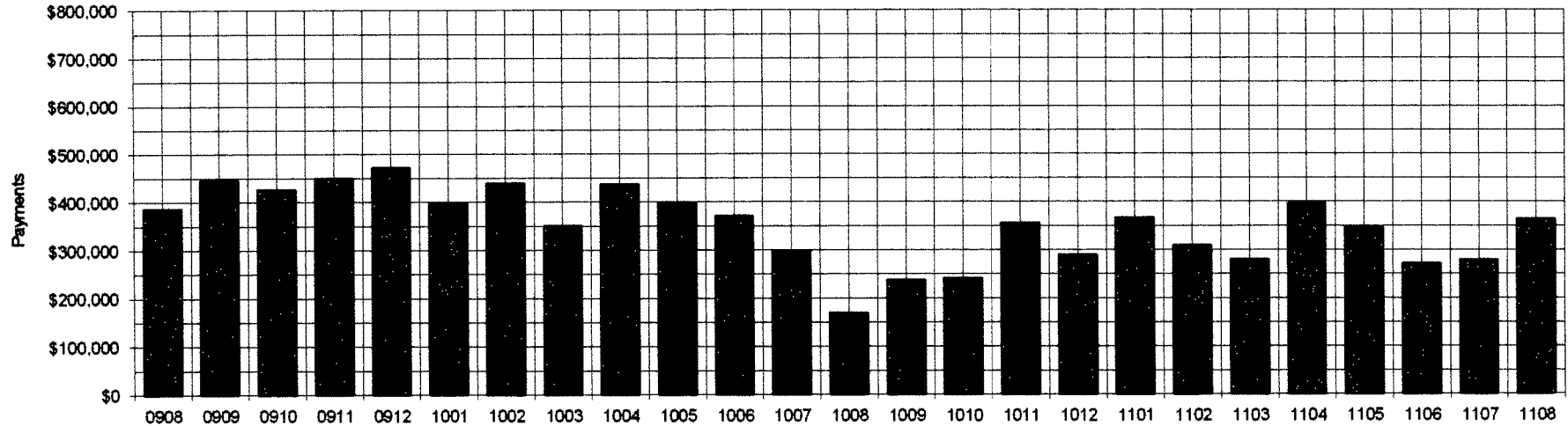


Monthly Comparisons [AUGUST11]



Payments

GENERAL RELIEF
Payments



Monthly Comparisons [AUGUST '11]