

DEPT. OF SOCIAL SERVICES-PAYMENTS AND AVERAGE GRANTS FOR WELFARE PROGRAMS

	AUGUST '12	JULY '12	INC./DEC. PRI MON	% DIFF PRI MON	**YTD TOTAL	AUGUST '11	INC/DEC PRIOR YR.	% INC/DEC PRIOR YR.
AUXILIARY GRANTS PROGRAMS								
RECIPIENTS	4,735	4,862	(127)	-3%	9,597	4,803	(68)	-1%
PAYMENTS	\$1,878,840	\$1,937,799	(\$58,959)	-3%	\$3,816,638	\$1,896,461	(\$17,622)	-1%
AVERAGE GRANT	\$397	\$399	(\$2)	0%	\$398	\$395	\$2	0%
ADULT FAMILY CARE								
RECIPIENTS	36	36	0	0%	72	42	(6)	-14%
PAYMENTS	\$12,294	\$13,323	(\$1,030)	-8%	\$25,617	\$17,942	(\$5,649)	-31%
AVERAGE GRANT	\$341	\$370	(\$29)	-8%	\$356	\$427	(\$86)	-20%
TEMPORARY ASSISTANCE FOR NEEDY FAMILIES								
RECIPIENTS-TOTAL	74,028	73,033	995	1%	147,061	80,594	(7,559)	-9%
TANF	67,287	66,444	843	1%	133,731	72,718	(5,431)	-7%
TANF-UNEMPLOYED PARENTS	6,741	6,589	152	2%	13,330	7,876	(1,135)	-14%
1/EMERGENCY ASSISTANCE	1	2	(1)	-50%	3	6	(5)	0%
PAYMENTS-TOTAL	\$9,047,811	\$8,903,104	\$144,707	2%	\$17,950,915	\$9,808,355	(\$760,544)	-8%
TANF	\$8,354,019	\$8,224,928	\$129,091	2%	\$16,578,946	\$8,986,913	(\$632,894)	-7%
TANF-UNEMPLOYED PARENTS	\$693,295	\$676,946	\$16,349	2%	\$1,370,241	\$820,642	(\$127,347)	-16%
EMERGENCY ASSISTANCE	\$498	\$1,230	(\$732)	-60%	\$1,728	\$800	(\$302)	0%
AVERAGE GRANT-TOTAL	\$122	\$122	\$0	0%	\$122	\$122	\$1	0%
AVERAGE MONEY PAYMENTS	\$124	\$124	\$0	0%	\$124	\$124	\$1	0%
AVERAGE TANF-UNEMPLOYED PARENTS	\$103	\$103	\$0	0%	\$103	\$104	(\$1)	-1%
AVERAGE EMERGENCY ASSISTANCE	\$498	\$615	(\$117)	-19%	\$576	\$133	\$364	0%
TITLE IV-E								
ADOPTION SUBSIDY- RECIPIENTS	6,889	7,070	(181)	-3%	13,959	5,331	1,558	29%
ADOPTION SUBSIDY - PAYMENTS	\$5,565,617	\$5,584,045	(\$18,428)	0%	\$11,149,662	\$3,818,154	\$1,747,463	46%
AVERAGE ADOPTION SUBSIDY	\$808	\$790	\$18	2%	\$799	\$716	\$92	13%
SPECIAL NEEDS ADOPTION								
SPECIAL NEEDS ADOPTION - RECIPIENTS	4,086	3,852	234	6%	7,938	4,835	(749)	-15%
SPECIAL NEEDS ADOPTION - PAYMENTS	\$3,471,269	\$3,147,757	\$323,512	10%	\$6,619,026	\$3,816,138	(\$344,869)	-9%
AVERAGE SPECIAL NEEDS ADOPTION	\$850	\$817	\$32	4%	\$834	\$789	\$60	8%
GENERAL RELIEF								
PAYMENTS-TOTAL	\$275,825	\$285,647	(\$9,822)	-3%	\$561,473	\$278,185	(\$2,359)	-1%

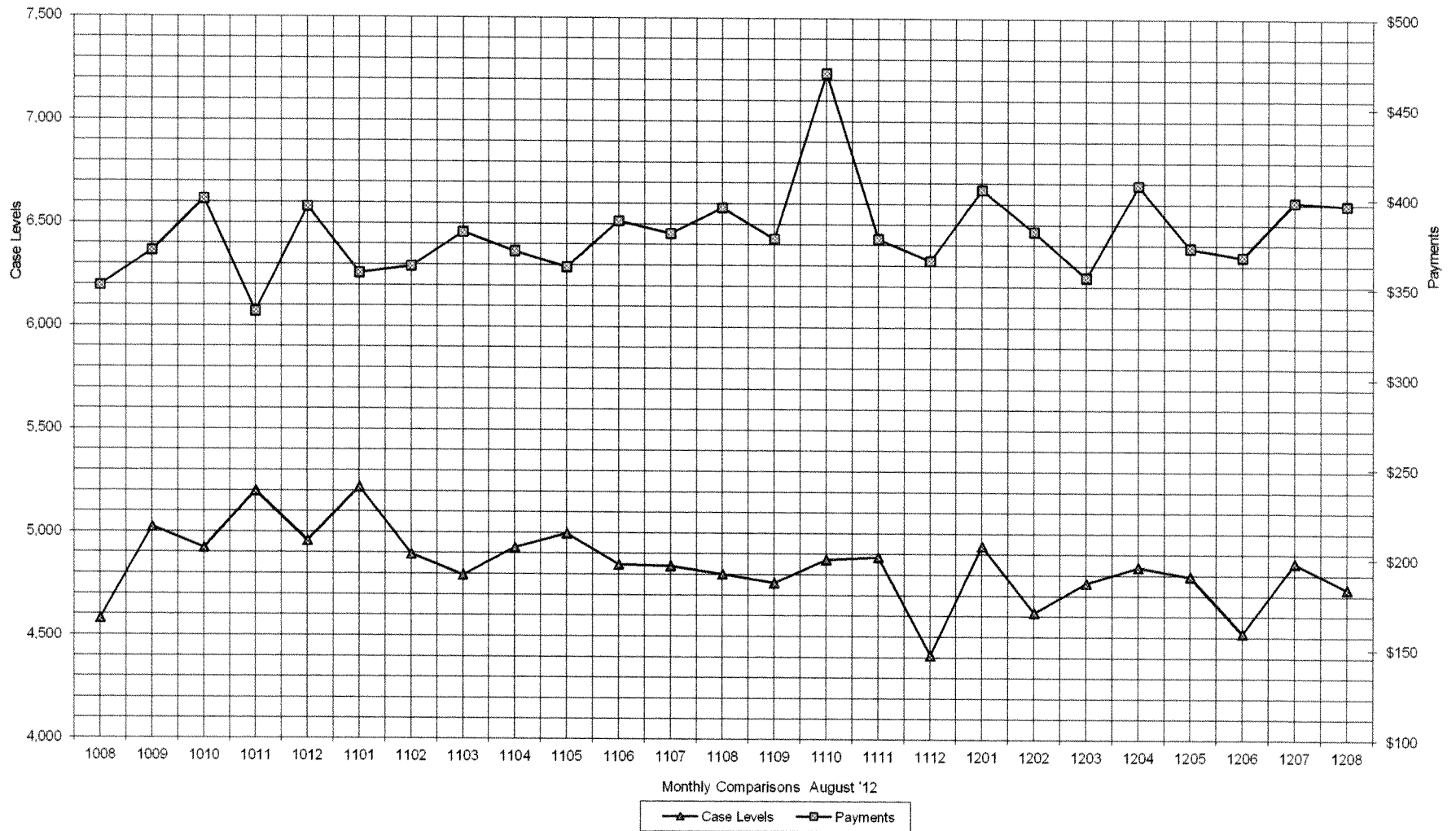
1/ INCLUDES 1 RECIPIENTS IN AUGUST AND 2 IN JULY WHO ALSO REC'D MONEY PAYMENTS

** YEAR TO DATE TOTAL: THE RECIPIENT FIGURES DO NOT REPRESENT TRUE COUNTS AS THE RECIPIENTS ARE GENERALLY THE SAME EVERY MONTH.
THE YEAR TO DATE DOLLAR FIGURES ARE ACCURATE.

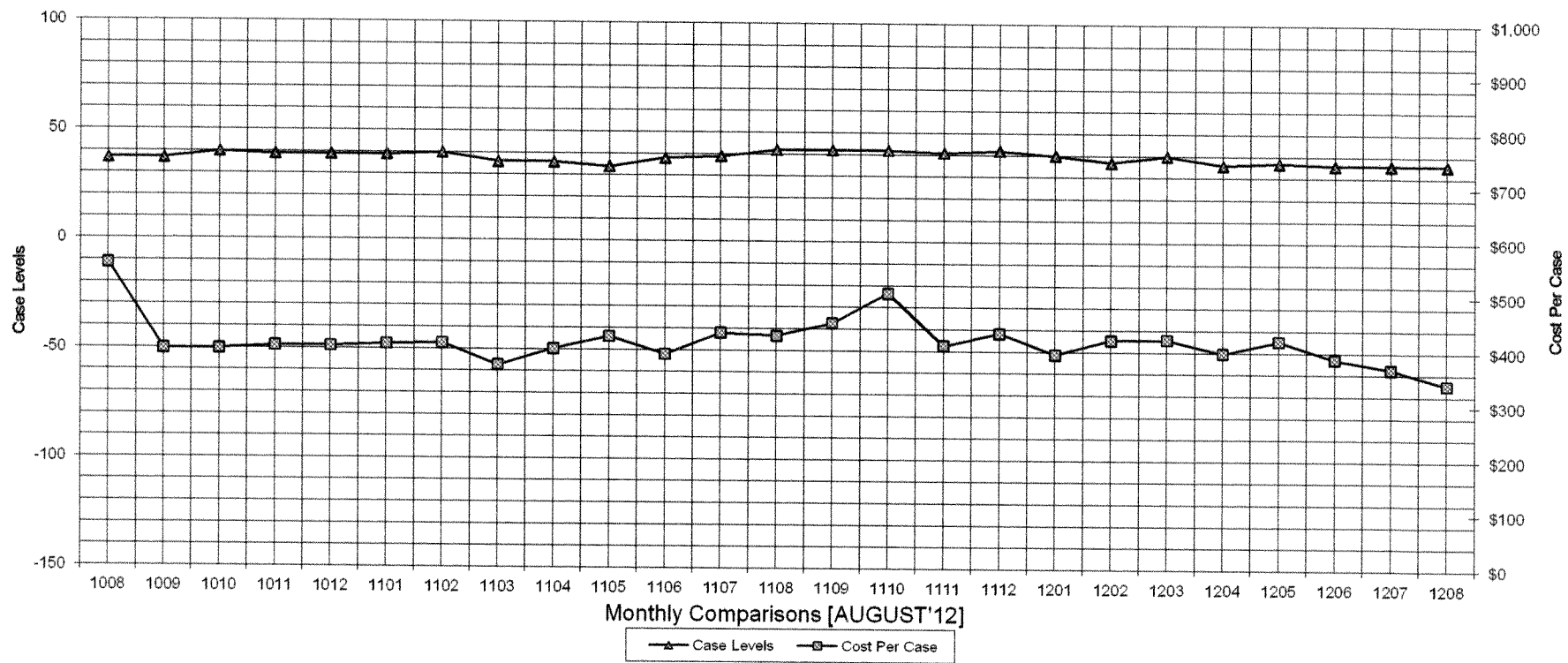
ARRA amounts are included in the payment amounts

General Disclaimer: Unless specifically stated otherwise, case count numbers indicated in this report(s) stem from amounts entered by local personnel into applicable ADAPT and LASER systems; therefore, all reviewers/users of this report understand that the accuracy of such case count numbers is contingent on the respective numbers entered by local personnel. Any subsequent liabilities associated with incorrect amounts being entered into the noted systems rests solely with each locality
Effective March 2008 a difference method of calculating TANF & TANF-UP information was established.

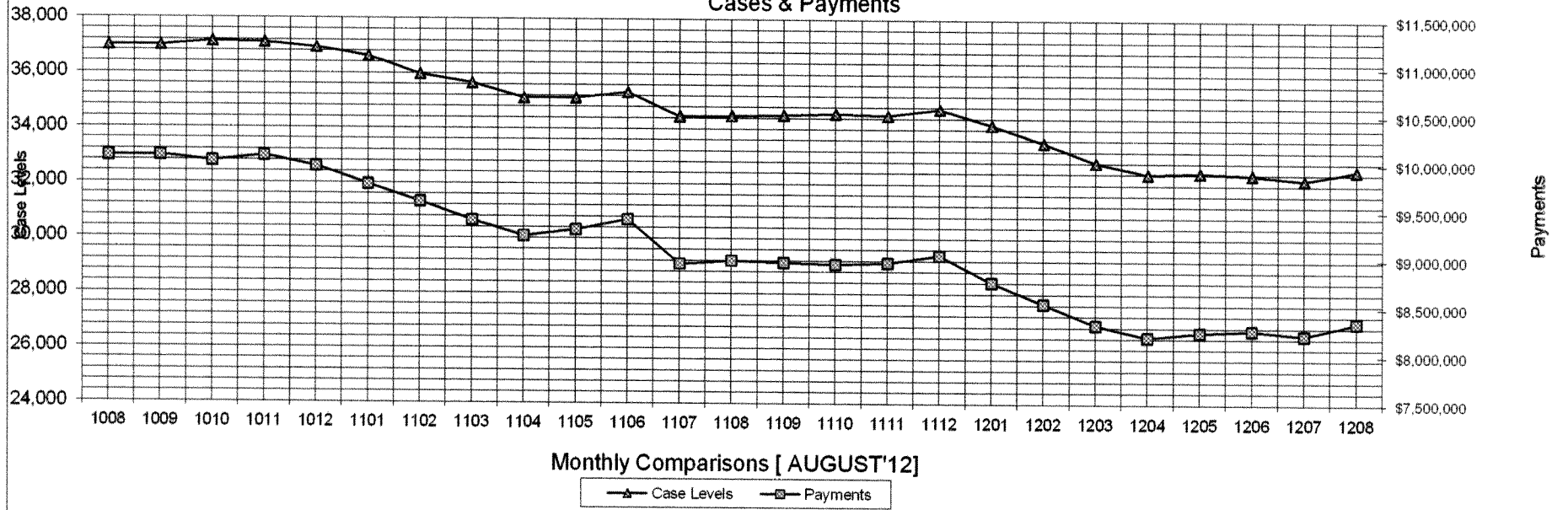
Auxiliary Grants Programs Cases & Payments



Adult Family Care Cases vs Cost-Per-Case



TANF Cases & Payments



Monthly Comparisons [AUGUST'12]

▲ Case Levels ◻ Payments

GENERAL RELIEF Payments

