

**DEPT. OF SOCIAL SERVICES-PAYMENTS AND AVERAGE GRANTS FOR WELFARE PROGRAMS**

	September '13	August '13	INC./DEC. PRI MON	% DIFF PRI MON	**YTD TOTAL	September '12	INC/DEC PRIOR YR.	% INC/DEC PRIOR YR.
<b>AUXILIARY GRANTS PROGRAMS</b>								
RECIPIENTS	4,576	4,524	52	1%	14,030	4,565	11	0%
PAYMENTS	\$1,878,485	\$1,820,103	\$58,382	3%	\$5,696,817	\$1,887,128	(\$8,643)	0%
AVERAGE GRANT	\$411	\$402	\$8	2%	\$406	\$413	(\$3)	-1%
<b>ADULT FAMILY CARE</b>								
RECIPIENTS	30	26	4	15%	84	36	(6)	-17%
PAYMENTS	\$14,332	\$13,371	\$961	7%	\$39,766	\$13,552	\$780	6%
AVERAGE GRANT	\$478	\$514	(\$37)	-7%	\$473	\$376	\$101	27%
<b>TEMPORARY ASSISTANCE FOR NEEDY FAMILIES</b>								
RECIPIENTS-TOTAL	67,595	67,790	(195)	0%	202,735	73,729	(5,928)	-8%
TANF	61,620	61,859	(239)	0%	184,977	67,064	(5,444)	-8%
TANF-UNEMPLOYED PARENTS	5,975	5,931	44	1%	17,758	6,685	(690)	-10%
1/EMERGENCY ASSISTANCE	3	11	(8)	-73%	19	2	1	50%
PAYMENTS-TOTAL	\$8,245,043	\$8,253,400	(\$8,357)	0%	\$24,719,356	\$8,991,995	(\$746,952)	-8%
TANF	\$7,615,776	\$7,637,607	(\$21,830)	0%	\$22,868,671	\$8,292,148	(\$676,371)	-8%
TANF-UNEMPLOYED PARENTS	\$629,167	\$614,834	\$14,332	2%	\$1,848,977	\$698,697	(\$69,530)	-10%
EMERGENCY ASSISTANCE	\$100	\$959	(\$859)	-90%	\$1,708	\$1,150	(\$1,050)	-91%
AVERAGE GRANT-TOTAL	\$122	\$122	\$0	0%	\$122	\$122	\$0	0%
AVERAGE MONEY PAYMENTS	\$124	\$123	\$0	0%	\$124	\$124	(\$0)	0%
AVERAGE TANF-UNEMPLOYED PARENTS	\$105	\$104	\$2	2%	\$104	\$105	\$0	0%
AVERAGE EMERGENCY ASSISTANCE	\$33	\$87	(\$54)	-62%	\$90	\$575	(\$542)	-94%
<b>TITLE IV-E</b>								
ADOPTION SUBSIDY- RECIPIENTS	7,826	7,826	0	0%	23,692	7,163	663	9%
ADOPTION SUBSIDY - PAYMENTS	\$6,059,310	\$6,059,310	\$0	0%	\$17,996,008	\$5,499,167	\$560,143	10%
AVERAGE ADOPTION SUBSIDY	\$774	\$774	\$0	0%	\$760	\$768	\$7	1%
<b>SPECIAL NEEDS ADOPTION</b>								
SPECIAL NEEDS ADOPTION - RECIPIENTS	4,080	4,080	0	0%	12,410	4,047	33	1%
SPECIAL NEEDS ADOPTION - PAYMENTS	\$3,302,248	\$3,302,248	\$0	0%	\$9,705,309	\$3,422,805	(\$120,557)	-4%
AVERAGE SPECIAL NEEDS ADOPTION	\$809	\$809	\$0	0%	\$782	\$846	(\$36)	-4%
<b>GENERAL RELIEF</b>								
PAYMENTS-TOTAL	\$187,837	\$187,837	\$0	0%	\$516,847	\$272,306	(\$84,469)	-31%

1/ INCLUDES 3 RECIPIENTS IN SEPTEMBER AND 11 IN AUGUST WHO ALSO REC'D MONEY PAYMENTS

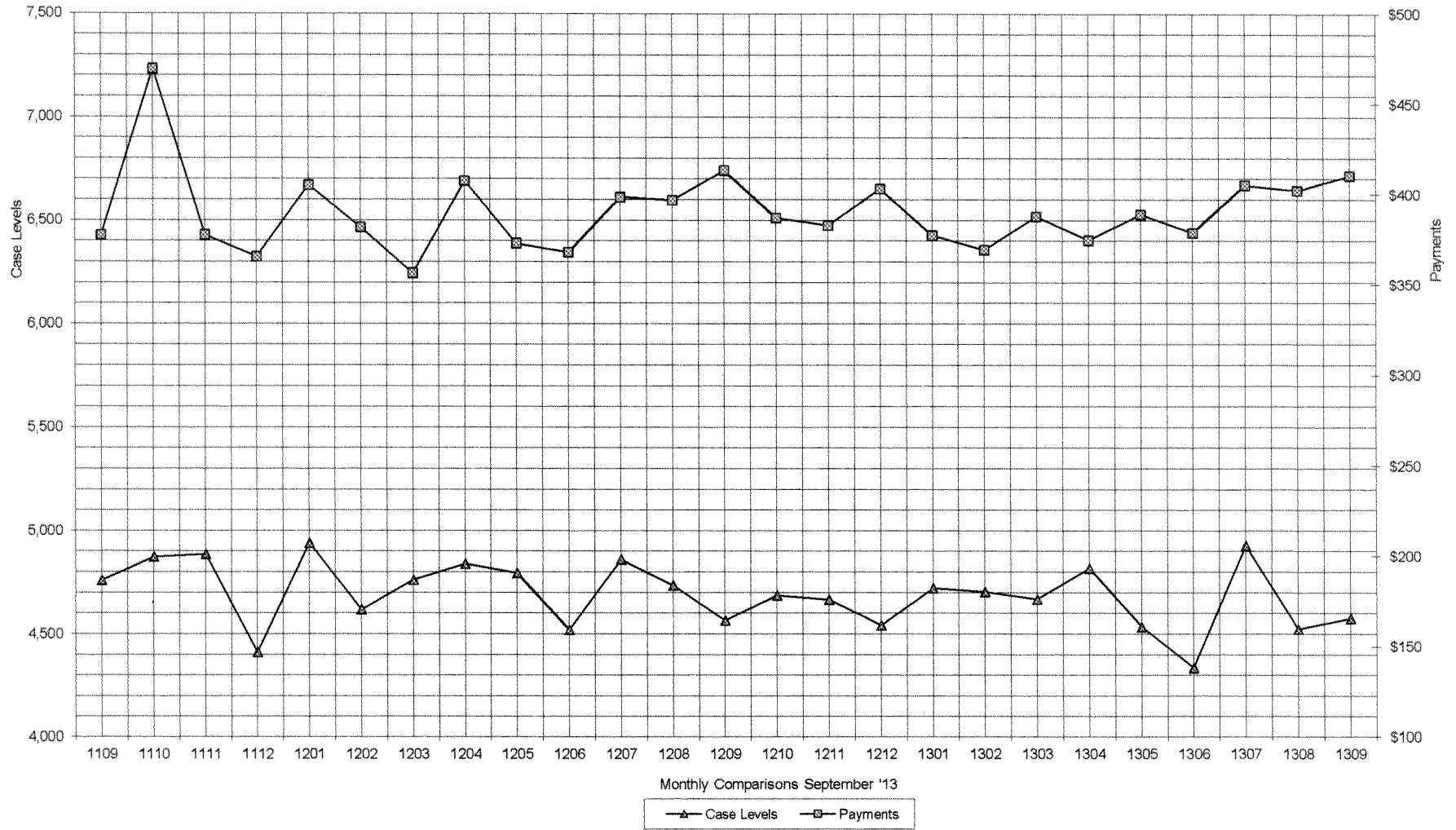
\*\* YEAR TO DATE TOTAL: THE RECIPIENT FIGURES DO NOT REPRESENT TRUE COUNTS AS THE RECIPIENTS ARE GENERALLY THE SAME EVERY MONTH. THE YEAR TO DATE DOLLAR FIGURES ARE ACCURATE.

ARRA amounts are included in the payment amounts

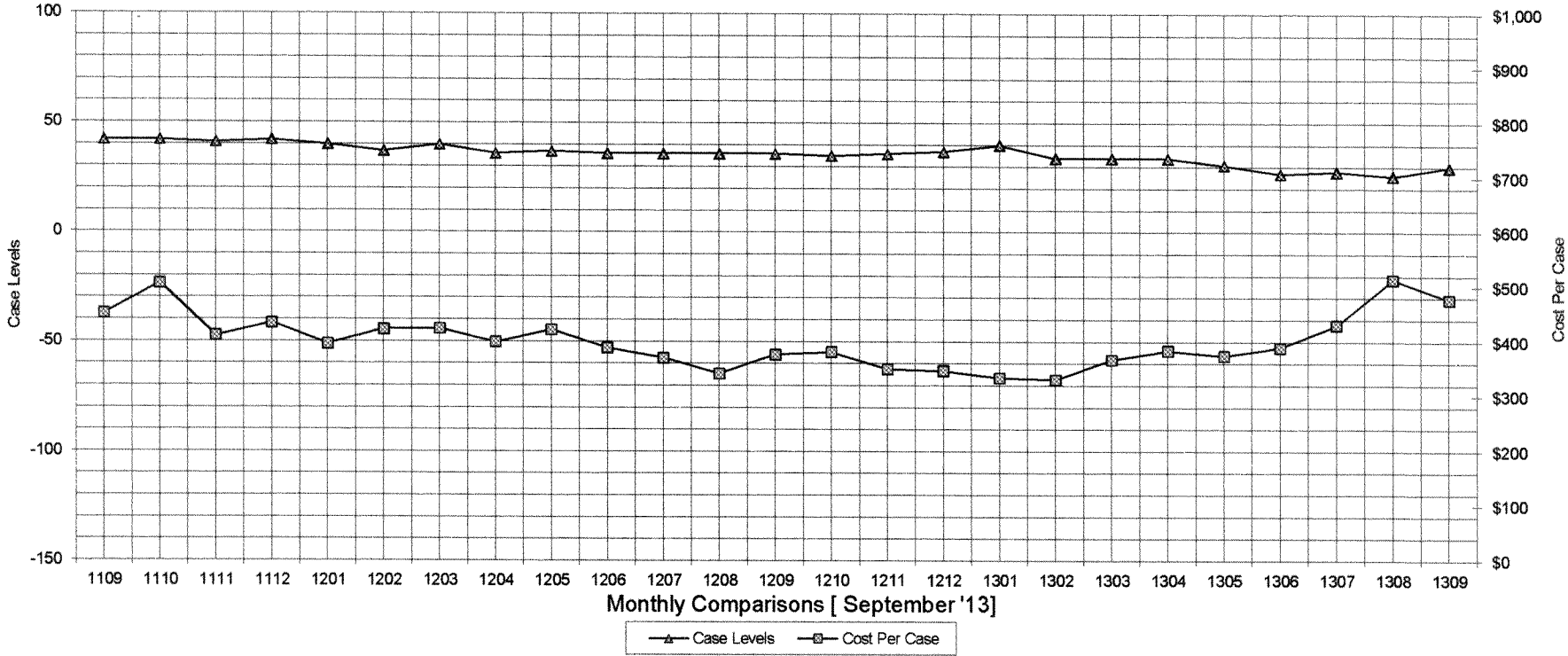
General Disclaimer: Unless specifically stated otherwise, case count numbers indicated in this report(s) stem from amounts entered by local personnel into applicable ADAPT and LASER systems; therefore, all reviewers/users of this report understand that the accuracy of such case count numbers is contingent on the respective numbers entered by local personnel. Any subsequent liabilities associated with incorrect amounts being entered into the noted systems rests solely with each locality.

Effective March 2008 a difference method of calculating TANF & TANF-UP information was established.

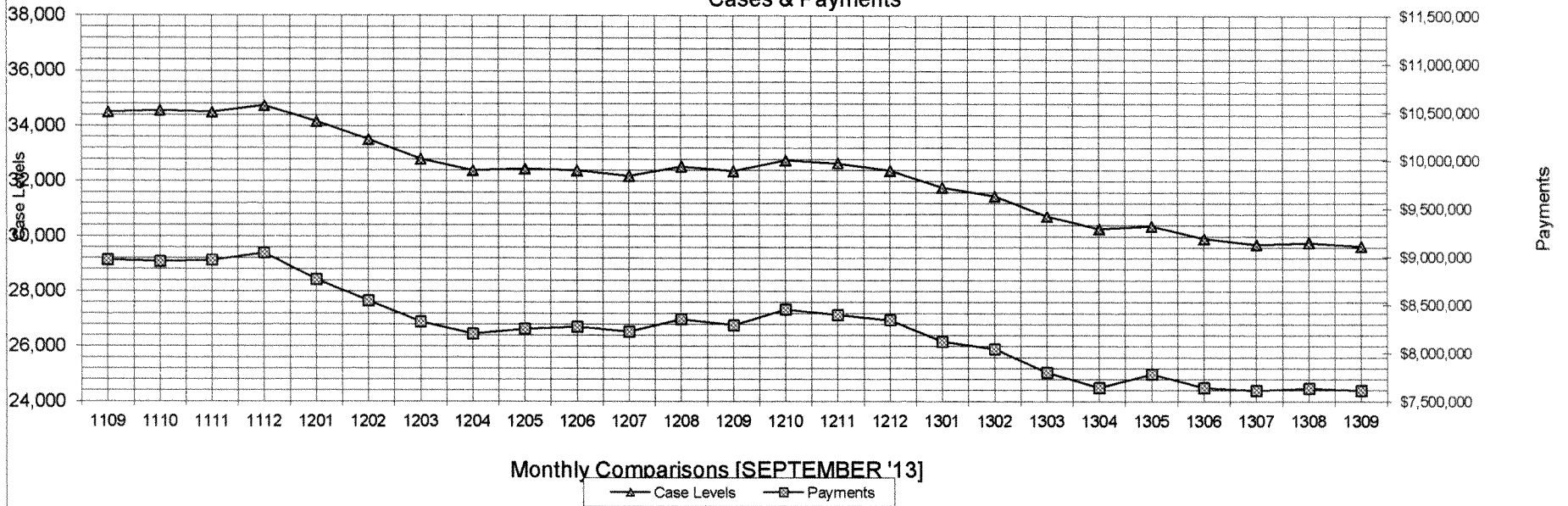
### Auxiliary Grants Programs Cases & Payments



Adult Family Care  
Cases vs Cost-Per-Case



### TANF Cases & Payments



Monthly Comparisons [SEPTEMBER '13]

Case Levels Payments

GENERAL RELIEF  
Payments

