

**DEPT. OF SOCIAL SERVICES-PAYMENTS AND AVERAGE GRANTS FOR WELFARE PROGRAMS**

	November '13	October '13	INC./DEC. PRI MON	% DIFF PRI MON	**YTD TOTAL	November '12	INC/DEC PRIOR YR.	% INC/DEC PRIOR YR.
<b>AUXILIARY GRANTS PROGRAMS</b>								
RECIPIENTS	4,885	4,826	59	1%	23,741	4,667	218	5%
PAYMENTS	\$1,802,464	\$1,944,750	(\$142,286)	-7%	\$9,444,031	\$1,787,213	\$15,251	1%
AVERAGE GRANT	\$369	\$403	(\$34)	-8%	\$398	\$383	(\$14)	-4%
<b>ADULT FAMILY CARE</b>								
RECIPIENTS	44	29	15	52%	157	36	8	22%
PAYMENTS	\$21,366	\$11,558	\$9,808	85%	\$72,690	\$12,610	\$8,755	69%
AVERAGE GRANT	\$486	\$399	\$87	22%	\$463	\$350	\$135	39%
<b>TEMPORARY ASSISTANCE FOR NEEDY FAMILIES</b>								
RECIPIENTS-TOTAL	66,113	67,502	(1,389)	-2%	336,350	74,660	(7,157)	-10%
TANF	60,250	61,561	(1,311)	-2%	306,788	67,925	(7,675)	-11%
TANF-UNEMPLOYED PARENTS	5,863	5,941	(78)	-1%	29,562	6,735	(872)	-13%
1/EMERGENCY ASSISTANCE	4	1	3	300%	24	1	3	300%
PAYMENTS-TOTAL	\$8,046,491	\$8,270,309	(\$223,819)	-3%	\$41,036,156	\$9,099,722	(\$1,053,231)	-12%
TANF	\$7,440,035	\$7,639,797	(\$199,761)	-3%	\$37,948,503	\$8,399,021	(\$958,985)	-11%
TANF-UNEMPLOYED PARENTS	\$605,961	\$630,046	(\$24,085)	-4%	\$3,084,983	\$700,571	(\$94,611)	-14%
EMERGENCY ASSISTANCE	\$495	\$467	\$28	6%	\$2,670	\$130	\$365	281%
AVERAGE GRANT-TOTAL	\$122	\$123	(\$1)	-1%	\$122	\$122	(\$0)	0%
AVERAGE MONEY PAYMENTS	\$123	\$124	(\$1)	0%	\$124	\$124	(\$0)	0%
AVERAGE TANF-UNEMPLOYED PARENTS	\$103	\$106	(\$3)	-3%	\$104	\$104	(\$1)	-1%
AVERAGE EMERGENCY ASSISTANCE	\$124	\$467	(\$343)	-73%	\$111	\$130	(\$6)	-5%
<b>TITLE IV-E</b>								
ADOPTION SUBSIDY- RECIPIENTS	8,835	8,325	510	6%	40,852	6,829	2,006	29%
ADOPTION SUBSIDY - PAYMENTS	\$6,075,810	\$6,245,693	(\$169,883)	-3%	\$30,317,511	\$5,491,592	\$584,219	11%
AVERAGE ADOPTION SUBSIDY	\$688	\$750	(\$63)	-8%	\$742	\$804	(\$116)	-14%
<b>SPECIAL NEEDS ADOPTION</b>								
SPECIAL NEEDS ADOPTION - RECIPIENTS	4,558	4,235	323	8%	21,203	4,023	535	13%
SPECIAL NEEDS ADOPTION - PAYMENTS	\$3,003,896	\$3,201,766	(\$197,870)	-6%	\$15,910,971	\$3,311,439	(\$307,543)	-9%
AVERAGE SPECIAL NEEDS ADOPTION	\$659	\$756	(\$97)	-13%	\$750	\$823	(\$164)	-20%
<b>GENERAL RELIEF</b>								
PAYMENTS-TOTAL	\$173,901	\$185,146	(\$11,245)	-6%	\$875,894	\$256,644	(\$82,742)	-32%

1/ INCLUDES 4 RECIPIENTS IN NOVEMBER AND 1 IN OCTOBER WHO ALSO REC'D MONEY PAYMENTS

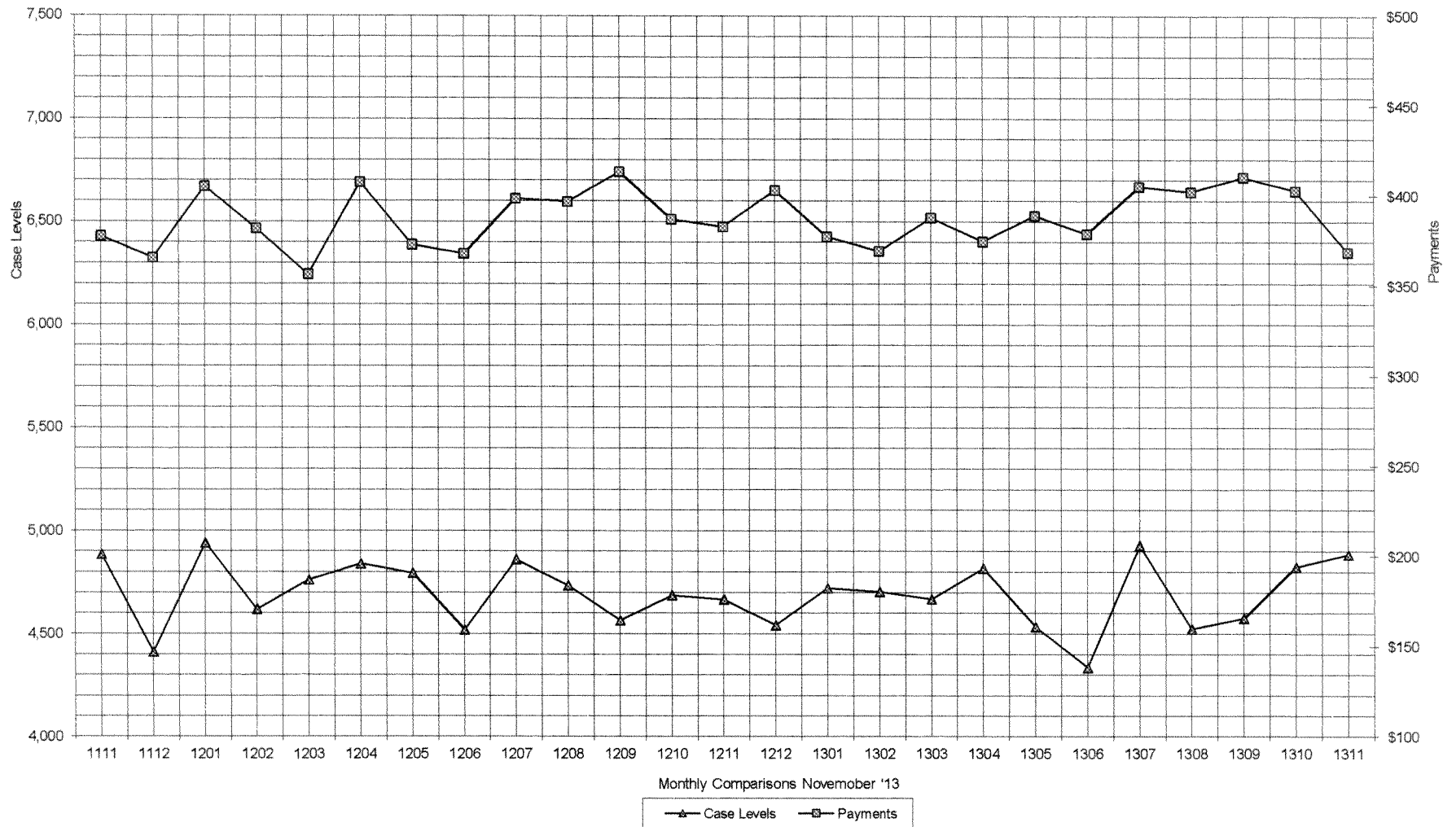
\*\* YEAR TO DATE TOTAL: THE RECIPIENT FIGURES DO NOT REPRESENT TRUE COUNTS AS THE RECIPIENTS ARE GENERALLY THE SAME EVERY MONTH. THE YEAR TO DATE DOLLAR FIGURES ARE ACCURATE.

ARRA amounts are included in the payment amounts

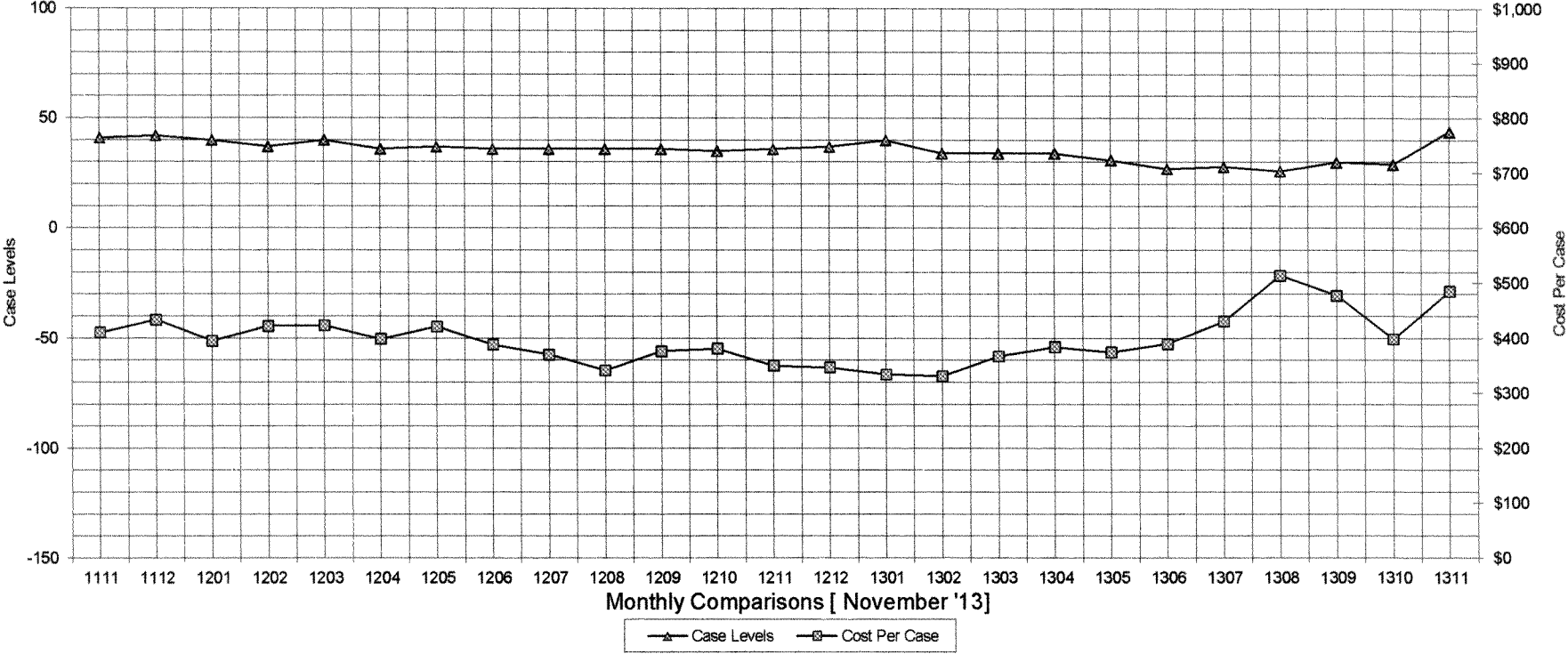
General Disclaimer: Unless specifically stated otherwise, case count numbers indicated in this report(s) stem from amounts entered by local personnel into applicable ADAPT and LASER systems; therefore, all reviewers/users of this report understand that the accuracy of such case count numbers is contingent on the respective numbers entered by local personnel. Any subsequent liabilities associated with incorrect amounts being entered into the noted systems rests solely with each locality.

Effective March 2008 a difference method of calculating TANF & TANF-UP information was established.

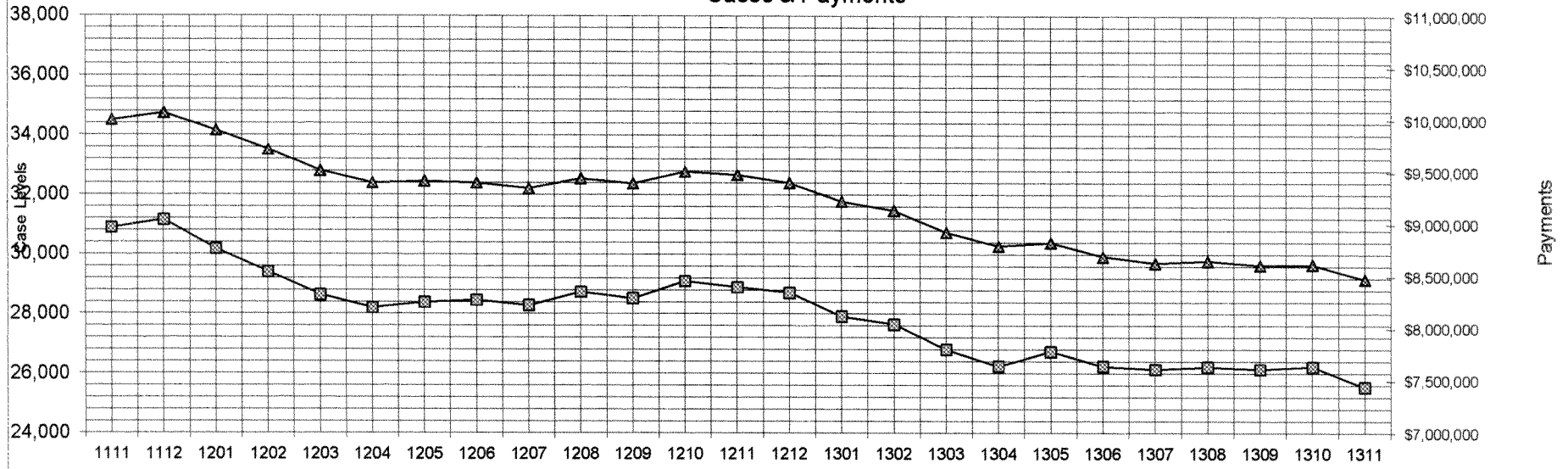
### Auxiliary Grants Programs Cases & Payments



Adult Family Care  
Cases vs Cost-Per-Case



### TANF Cases & Payments



Monthly Comparisons [ NOVEMBER '13]

▲ Case Levels    □ Payments

### GENERAL RELIEF Payments

