

**DEPT. OF SOCIAL SERVICES-PAYMENTS AND AVERAGE GRANTS FOR WELFARE PROGRAMS**

	Nov '14	Oct '14	INC./DEC. PRI MON	% DIFF PRI MON	YTD TOTAL	Nov '13	INC/DEC PRIOR YR.	% INC/DEC PRIOR YR.
<b>AUXILIARY GRANTS PROGRAMS</b>								
RECIPIENTS	4,296	4,348	(52)	-1%	-	4,885	(589)	-12%
PAYMENTS**	\$1,778,843	\$1,761,757	\$17,086	1%	\$8,832,782	\$1,802,464	(\$23,621)	-1%
AVERAGE GRANT	\$414	\$405	\$9	2%	-	\$369	\$45	12%
<b>ADULT FOSTER CARE</b>								
RECIPIENTS	41	38	3	8%	-	44	(3)	-7%
PAYMENTS	\$16,660	\$16,129	\$532	3%	\$71,965	\$21,366	(\$4,705)	-22%
AVERAGE GRANT	\$406	\$424	(\$18)	-4%	-	\$486	(\$79)	-16%
<b>TEMPORARY ASSISTANCE FOR NEEDY FAMILIES</b>								
RECIPIENTS-TOTAL	59,733	60,673	(940)	-2%	-	66,113	(5,439)	-8%
TANF	54,241	55,058	(817)	-1%	272,392	60,250	(6,009)	-10%
TANF-UNEMPLOYED PARENTS	5,492	5,615	(123)	-2%	27,686	5,863	(371)	-6%
1/EMERGENCY ASSISTANCE	2	1	1	100%	7	4	(2)	-50%
PAYMENTS-TOTAL	\$7,456,140	\$7,574,042	(\$117,902)	-2%	\$37,024,994	\$8,046,491	(\$590,351)	-7%
TANF	\$6,873,283	\$6,978,071	(\$104,788)	-2%	\$34,102,489	\$7,440,035	(\$566,752)	-8%
TANF-UNEMPLOYED PARENTS	\$582,708	\$595,946	(\$13,238)	-2%	\$2,921,220	\$605,961	(\$23,253)	-4%
EMERGENCY ASSISTANCE	\$149	\$25	\$124	497%	\$1,284	\$495	(\$346)	-70%
AVERAGE GRANT-TOTAL	\$125	\$125	(\$0)	0%	-	\$122	\$3	3%
AVERAGE MONEY PAYMENTS	\$127	\$127	(\$0)	0%	\$125	\$123	\$3	3%
AVERAGE TANF-UNEMPLOYED PARENTS	\$106	\$106	(\$0)	0%	\$106	\$103	\$3	3%
AVERAGE EMERGENCY ASSISTANCE	\$75	\$25	\$50	199%	\$183	\$124	(\$49)	-40%
<b>TITLE IV-E</b>								
ADOPTION SUBSIDY- RECIPIENTS	8,517	8,488	29	0%	-	8,835	(318)	-4%
ADOPTION SUBSIDY - PAYMENTS	\$6,794,830	\$6,690,639	\$104,191	2%	\$33,116,389	\$6,075,810	\$719,020	12%
AVERAGE ADOPTION SUBSIDY	\$798	\$788	\$10	1%	-	\$688	\$110	16%
<b>SPECIAL NEEDS ADOPTION</b>								
SPECIAL NEEDS ADOPTION - RECIPIENTS	3,673	3,874	(201)	-5%	-	4,558	(885)	-19%
SPECIAL NEEDS ADOPTION - PAYMENTS	\$2,717,966	\$2,898,211	(\$180,245)	-6%	\$14,478,872	\$3,003,896	(\$285,930)	-10%
AVERAGE SPECIAL NEEDS ADOPTION	\$740	\$748	(\$8)	-1%	-	\$659	\$81	12%
<b>GENERAL RELIEF</b>								
PAYMENTS-TOTAL	\$141,566	\$130,881	\$10,685	8%	\$793,289	\$173,901	(\$32,335)	-19%

1/ INCLUDES 2 RECIPIENTS IN NOVEMBER AND 1 IN OCTOBER WHO ALSO REC'D MONEY PAYMENTS

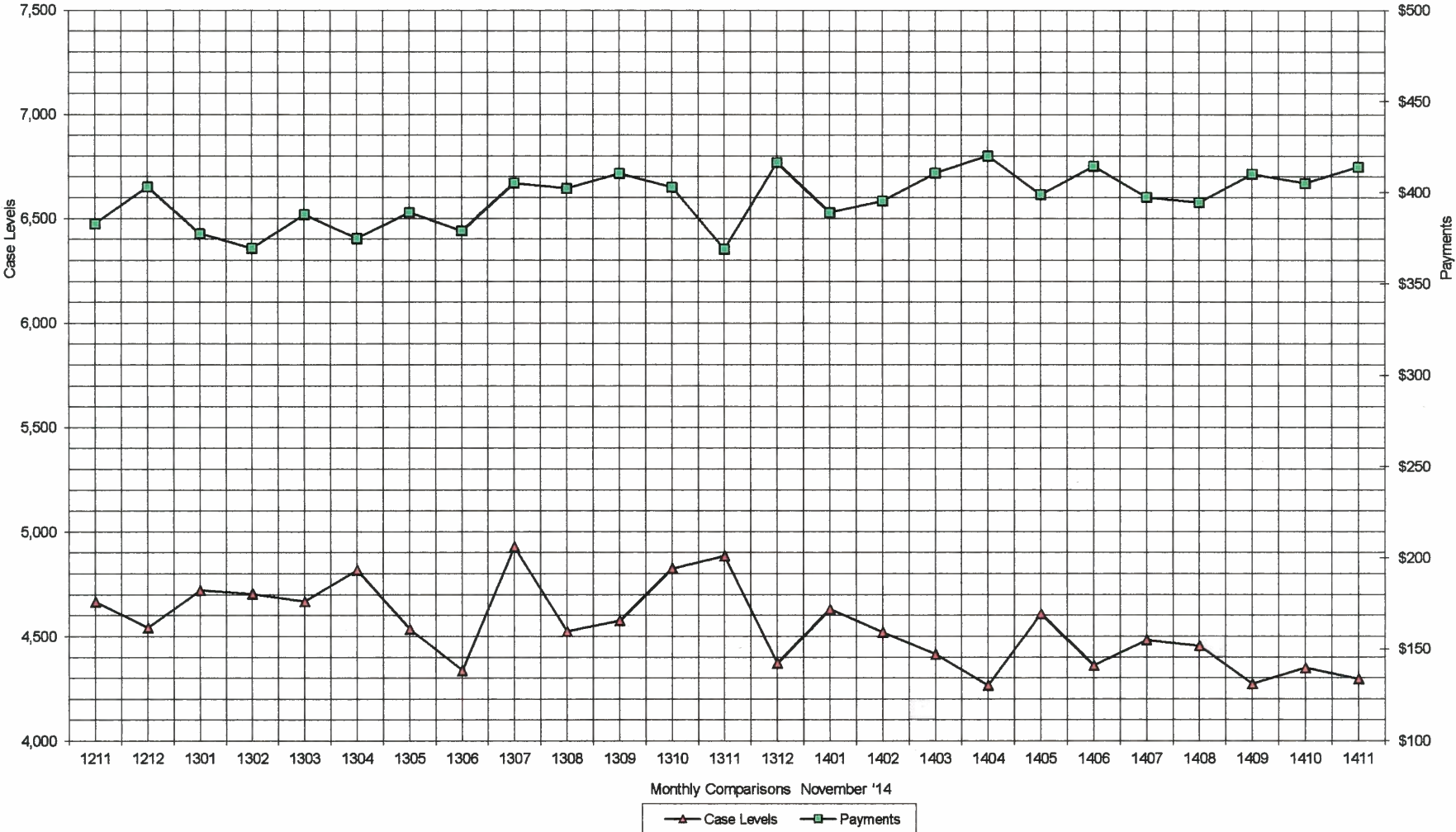
\*\* AUXILIARY GRANT EXPENDITURES DO NOT INCLUDE THE LOCAL SHARE OF 20%

ARRA amounts are included in the payment amounts

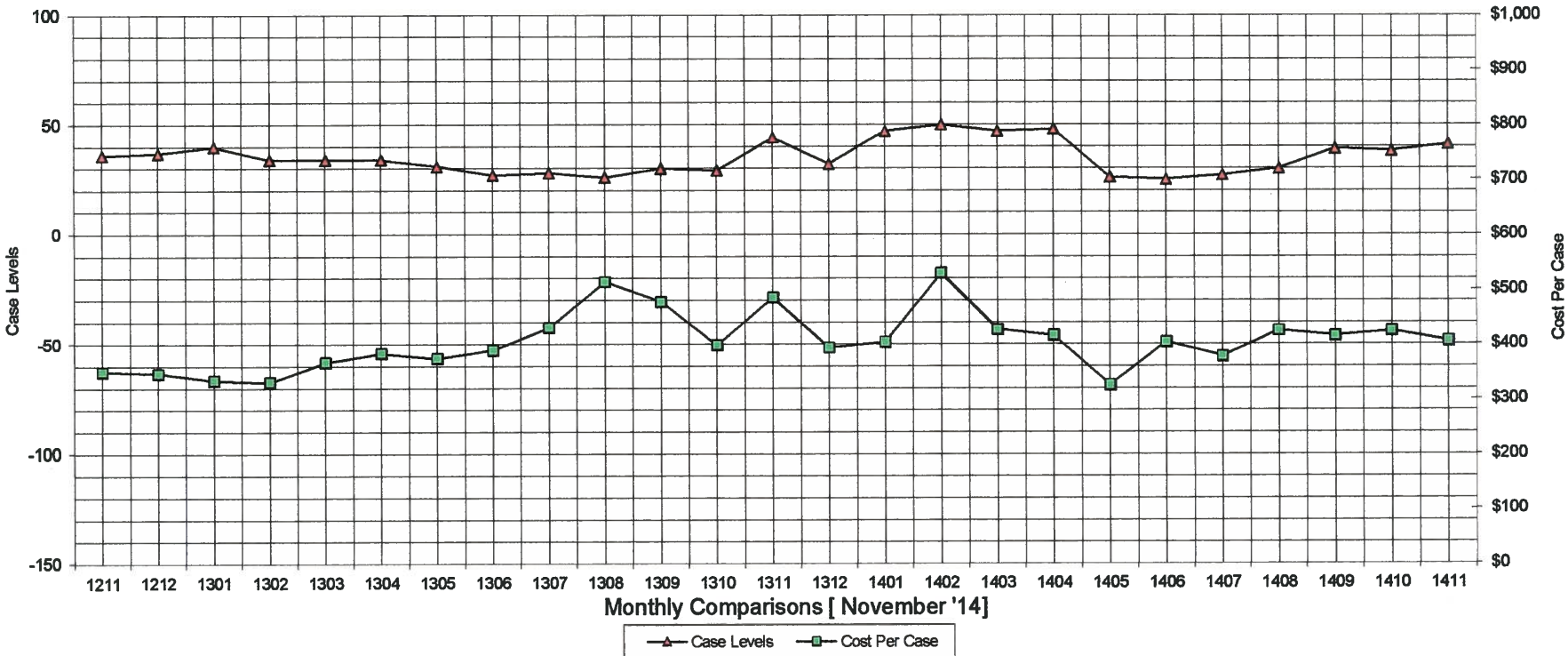
General Disclaimer: Unless specifically stated otherwise, case count numbers indicated in this report(s) stem from amounts entered by local personnel into applicable ADAPT and LASER systems; therefore, all reviewers/users of this report understand that the accuracy of such case count numbers is contingent on the respective numbers entered by local personnel. Any subsequent liabilities associated with incorrect amounts being entered into the noted systems rests solely with each locality.

Effective March 2008 a difference method of calculating TANF & TANF-UP information was established.

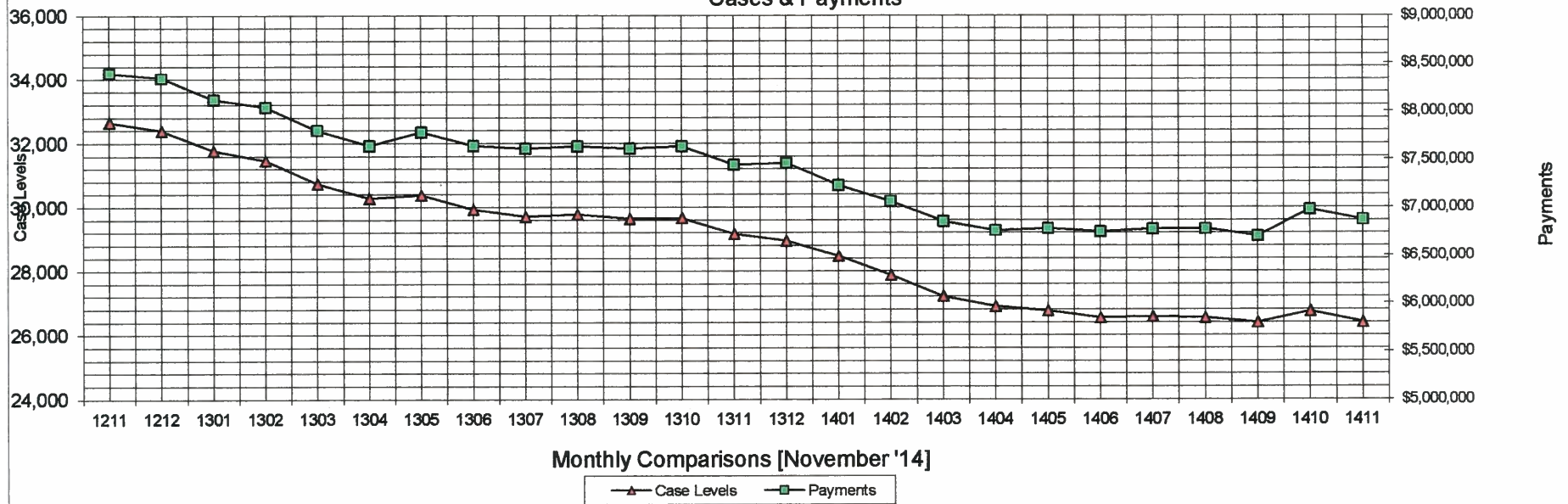
### Auxiliary Grants Programs Cases & Payments



### Adult Family Care Cases vs Cost-Per-Case



### TANF Cases & Payments



GENERAL RELIEF  
Payments

