

DEPT. OF SOCIAL SERVICES-PAYMENTS AND AVERAGE GRANTS FOR WELFARE PROGRAMS

	Apr '15	Mar '15	INC./DEC. PRI MON	% DIFF PRI MON	YTD TOTAL	Apr '14	INC/DEC PRIOR YR.	% INC/DEC PRIOR YR.
AUXILIARY GRANTS PROGRAMS								
RECIPIENTS	4,102	4,238	(136)	-3%	-	4,266	(164)	-4%
PAYMENTS**	\$1,691,120	\$1,743,232	(\$52,112)	-3%	\$17,528,732	\$1,792,149	(\$101,028)	-6%
AVERAGE GRANT	\$412	\$411	\$1	0%	-	\$420	(\$8)	-2%
ADULT FOSTER CARE								
RECIPIENTS	44	45	(1)	-2%	-	48	(4)	-8%
PAYMENTS	\$18,465	\$19,062	(\$597)	-3%	\$166,056	\$19,982	(\$1,517)	-8%
AVERAGE GRANT	\$420	\$424	(\$4)	-1%	-	\$416	\$3	1%
TEMPORARY ASSISTANCE FOR NEEDY FAMILIES								
RECIPIENTS-TOTAL	55,005	55,629	(624)	-1%	-	60,671	(5,042)	-8%
TANF	49,759	50,338	(579)	-1%	531,517	54,934	(5,175)	-9%
TANF-UNEMPLOYED PARENTS	5,246	5,291	(45)	-1%	54,779	5,737	(491)	-9%
1/EMERGENCY ASSISTANCE	0	0	0	0%	16	2	(2)	-100%
PAYMENTS-TOTAL	\$6,818,770	\$6,915,214	(\$96,444)	-1%	\$72,707,529	\$7,347,862	(\$529,092)	-7%
TANF	\$6,259,678	\$6,359,794	(\$100,116)	-2%	\$66,899,623	\$6,780,328	(\$500,650)	-7%
TANF-UNEMPLOYED PARENTS	\$559,092	\$555,420	\$3,672	1%	\$5,803,704	\$587,034	(\$27,941)	-5%
EMERGENCY ASSISTANCE	\$0	\$0	\$0	0%	\$4,202	\$500	(\$500)	-100%
AVERAGE GRANT-TOTAL	\$124	\$124	(\$0)	0%	-	\$121	\$3	2%
AVERAGE MONEY PAYMENTS	\$126	\$126	(\$1)	0%	\$126	\$123	\$3	2%
AVERAGE TANF-UNEMPLOYED PARENTS	\$107	\$105	\$2	2%	\$106	\$102	\$4	4%
AVERAGE EMERGENCY ASSISTANCE	\$0	\$0	\$0	0%	\$263	\$250	(\$250)	-100%
TITLE IV-E								
ADOPTION SUBSIDY- RECIPIENTS	7,567	8,794	(1,227)	-14%	-	8,117	(550)	-7%
ADOPTION SUBSIDY - PAYMENTS	\$6,817,433	\$6,901,309	(\$83,875)	-1%	\$67,015,549	\$6,276,396	\$541,038	9%
AVERAGE ADOPTION SUBSIDY	\$901	\$785	\$116	15%	-	\$773	\$128	17%
SPECIAL NEEDS ADOPTION								
SPECIAL NEEDS ADOPTION - RECIPIENTS	3,694	3,938	(244)	-6%	-	4,064	(370)	-9%
SPECIAL NEEDS ADOPTION - PAYMENTS	\$2,833,555	\$2,929,044	(\$95,489)	-3%	\$28,932,534	\$3,093,196	(\$259,641)	-8%
AVERAGE SPECIAL NEEDS ADOPTION	\$767	\$744	\$23	3%	-	\$761	\$6	1%
GENERAL RELIEF								
PAYMENTS-TOTAL	\$161,377	\$155,564	\$5,812	4%	\$1,604,862	\$97,091	\$64,286	66%

1/ INCLUDES 0 RECIPIENTS IN APRIL AND 0 IN MARCH WHO ALSO REC'D MONEY PAYMENTS

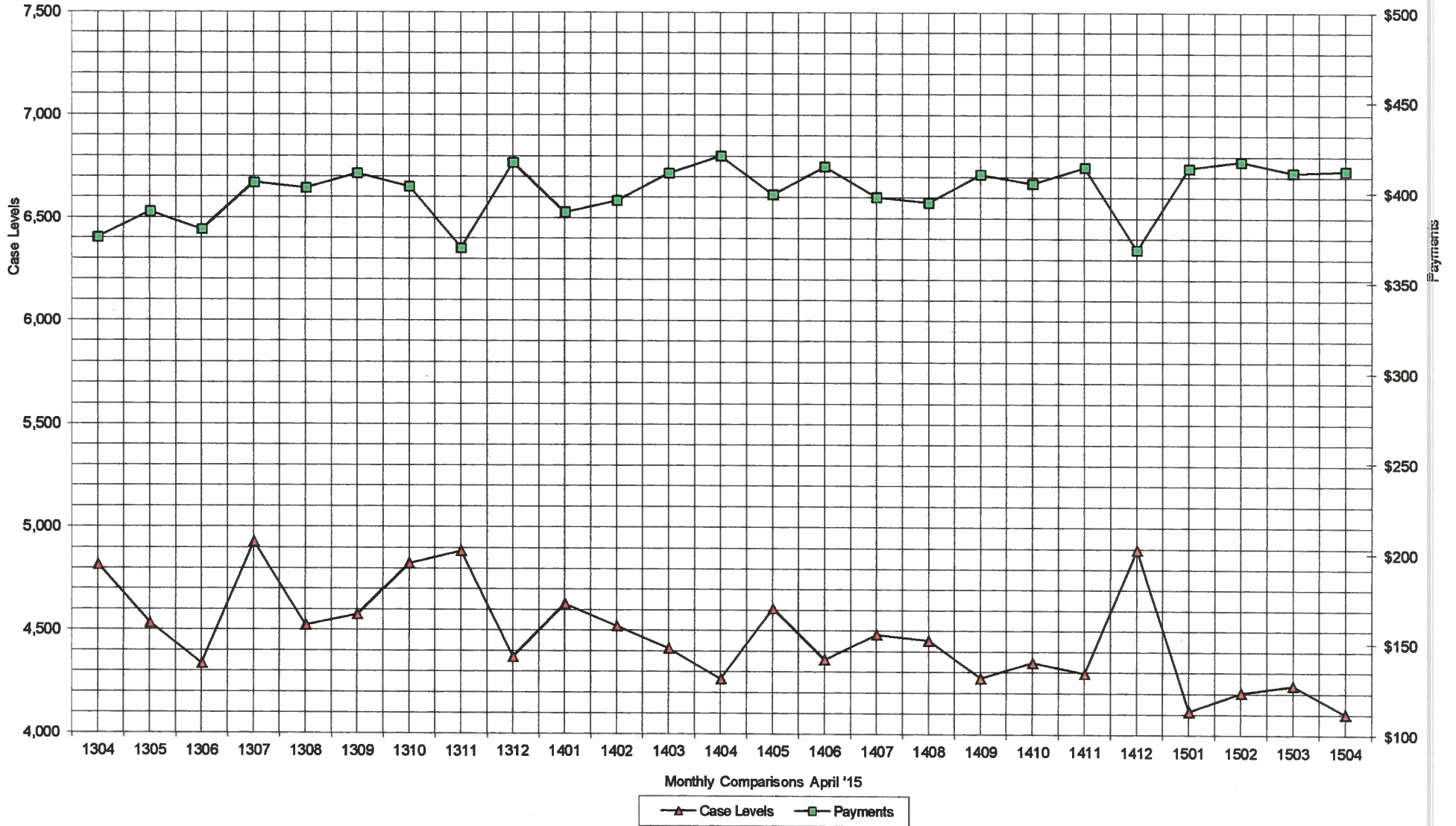
** AUXILIARY GRANT EXPENDITURES DO NOT INCLUDE THE LOCAL SHARE OF 20%

ARRA amounts are included in the payment amounts

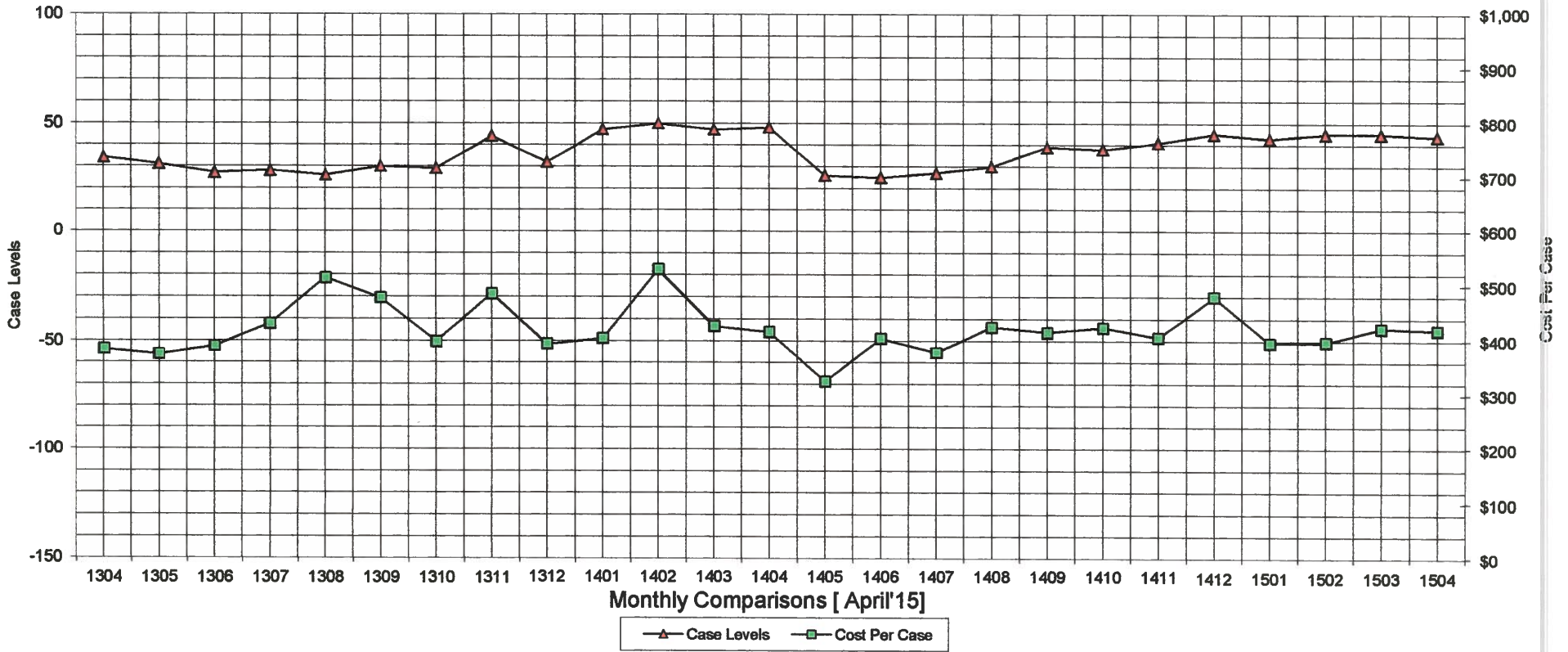
General Disclaimer: Unless specifically stated otherwise, case count numbers indicated in this report(s) stem from amounts entered by local personnel into applicable ADAPT and LASER systems; therefore, all reviewers/users of this report understand that the accuracy of such case count numbers is contingent on the respective numbers entered by local personnel. Any subsequent liabilities associated with incorrect amounts being entered into the noted systems rests solely with each locality.

Effective March 2008 a difference method of calculating TANF & TANF-UP information was established.

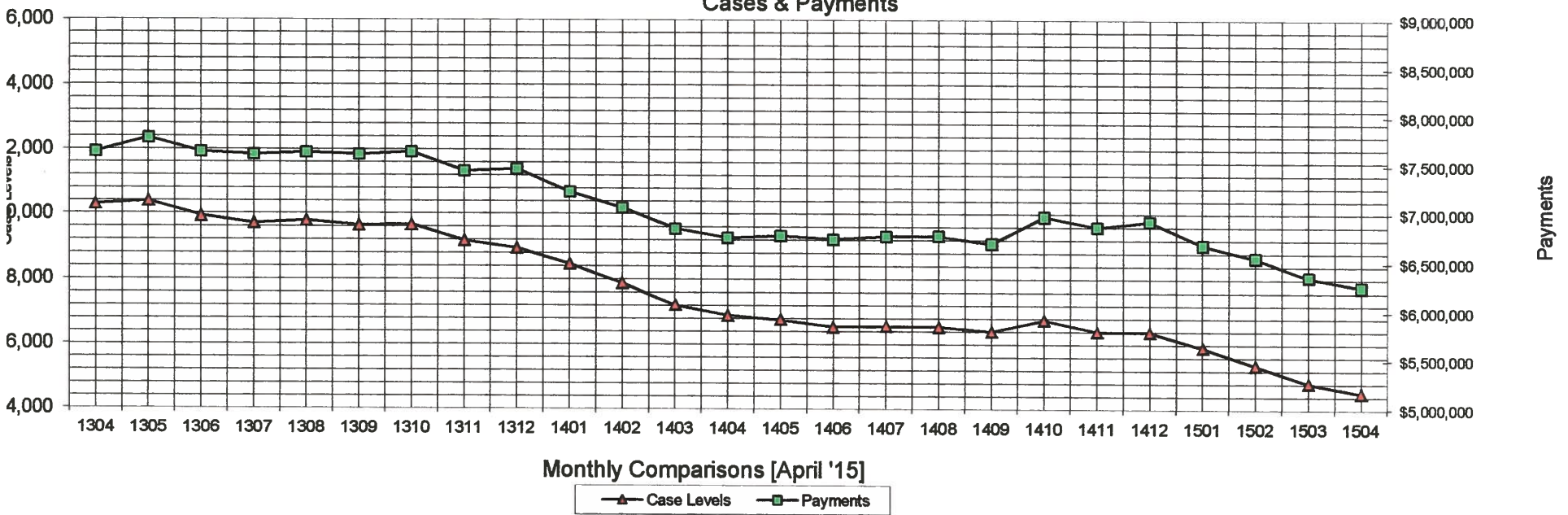
Auxiliary Grants Programs Cases & Payments



Adult Family Care Cases vs Cost-Per-Case



TANF Cases & Payments



Monthly Comparisons [April '15]



GENERAL RELIEF Payments

